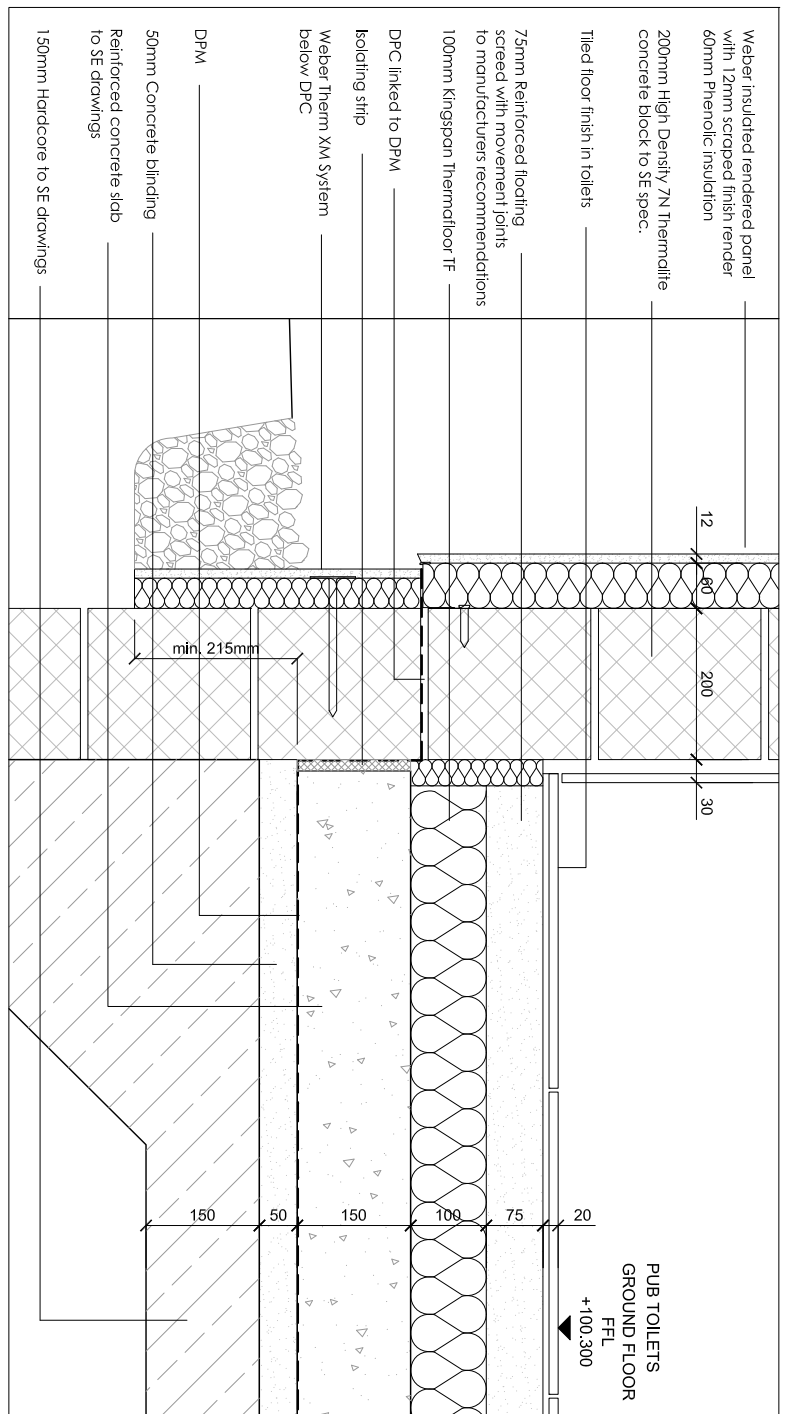
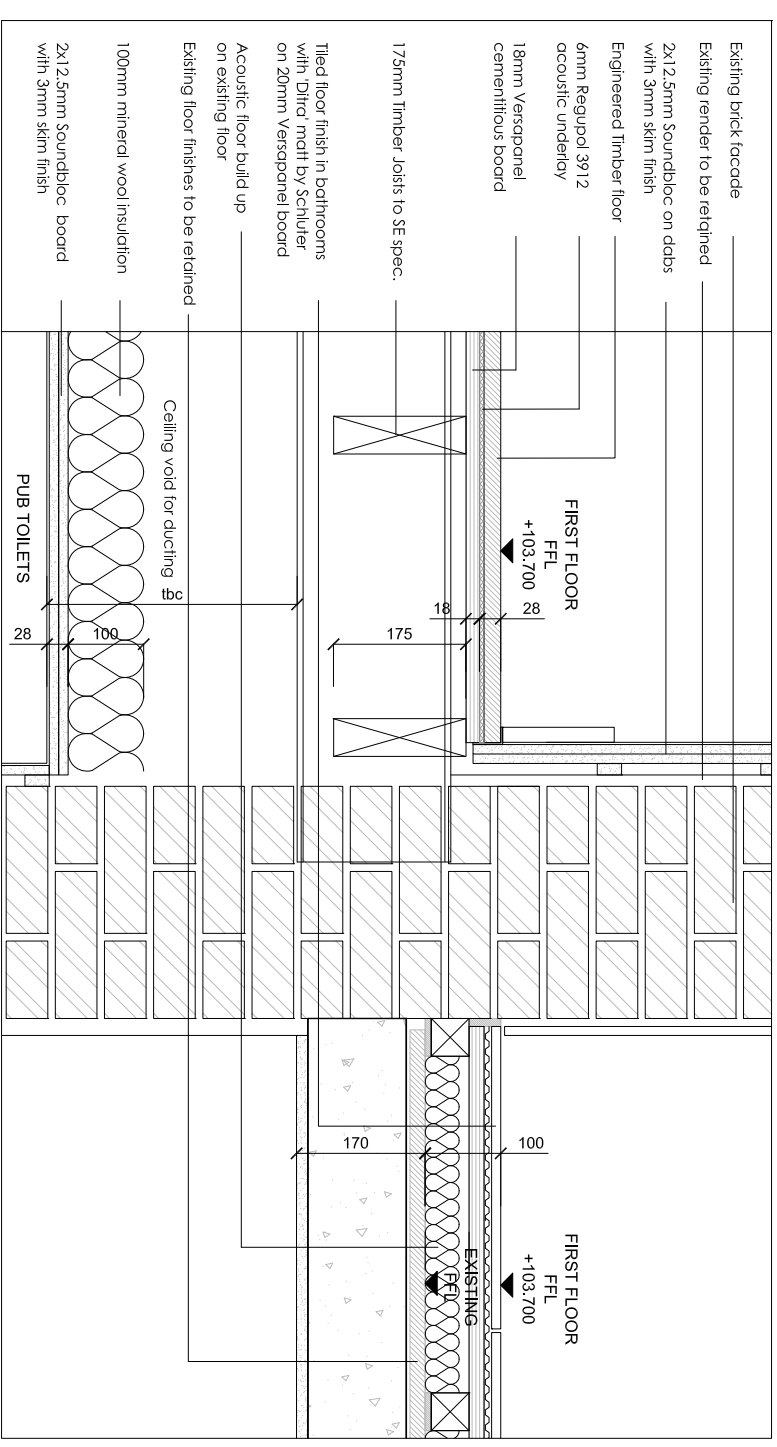


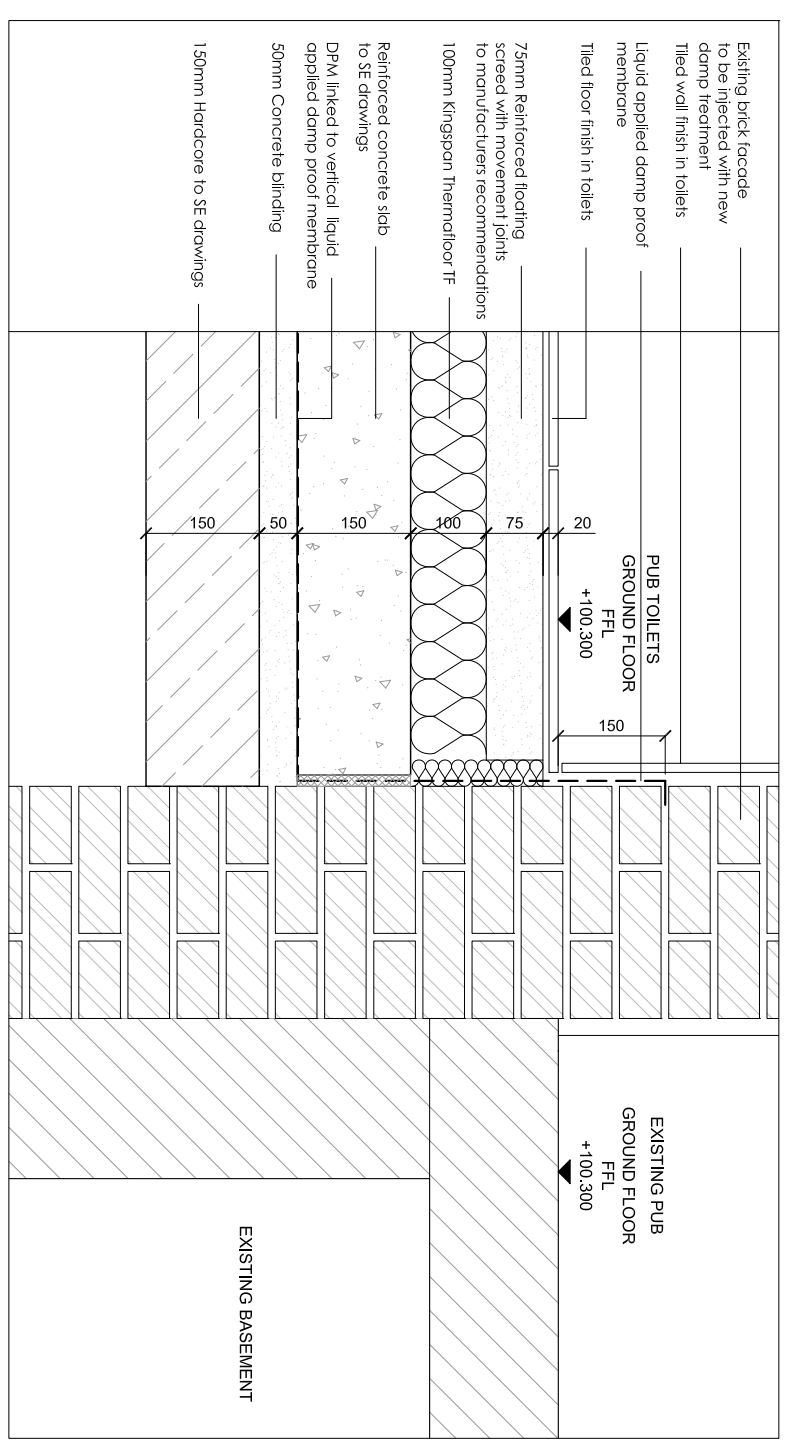
1 FIRST FLOOR AND FACADE DETAIL
WD203 SCALE 1: 5@A1



2 GROUND FLOOR SLAB AND FACADE DETAIL
WD203 SCALE 1: 5@A1



3 FIRST FLOOR AND EXISTING REAR WALL DETAIL
WD203 SCALE 1: 5@A1



4 GROUND FLOOR SLAB AND EXISTING REAR WALL DETAIL
WD203 SCALE 1: 5@A1

Revision	Date	Reason	Initial	Notes
/	19.05.16	DETAIL DESIGN	GM	
A	07.06.16	DETAIL DESIGN	GM	
B	14.06.16	DETAIL DESIGN	GM	

- FOLLOW MANUFACTURERS INSTRUCTIONS/RECOMMENDATIONS FOR ALL INSTALLATIONS
- REFER TO RELATIVE CONSULTANT'S REPORTS FOR FURTHER DETAILS WHEN APPLICABLE
- TO BE READ IN CONJUNCTION WITH STRUCTURAL ENGINEER DRAWINGS
- TO BE READ IN CONJUNCTION WITH MECHANICAL ENGINEER DRAWINGS
- 1 HOUR FIRE RATING TO ALL STRUCTURAL ELEMENTS.
- 1 HOUR FIRE RATING TO ALL INTERNAL PARTITIONS BETWEEN UNITS
- 30 MIN. FIRE RATING TO ALL INTERNAL PARTITIONS AND FLOORS
- IF THE MATERIAL IS NOT PRESCRIBED, CONTRACTOR TO PROVIDE PROPOSALS AND SAMPLES FOR APPROVAL PRIOR TO ORDER
- CONTRACTOR TO COMPLY WITH OR BUILDING CONTROL REQUIREMENTS

Dimensions based on topographical survey by EPC commercial surveys Ltd
All dimensions must be checked on site and not scaled from this drawing
© Mark Fairhurst Ltd.

mark fairhurst ARCHITECTS

48A, Union Street, London, SE1 1TD. T 020 7407 7070. E info@mark-fairhurst.co.uk
Project: Cock Tavern, 23 Phoenix Road, London NW1 1HB

Client: Flamesrike Ltd.

Drawing title: Extension Details 2

Scale: 1:10@A3, 1:5@A1 Date: 14.06.16 Drawn by: GM

Project number: 1250 Drawing number: WD203

Status: DETAIL DESIGN Revision: B