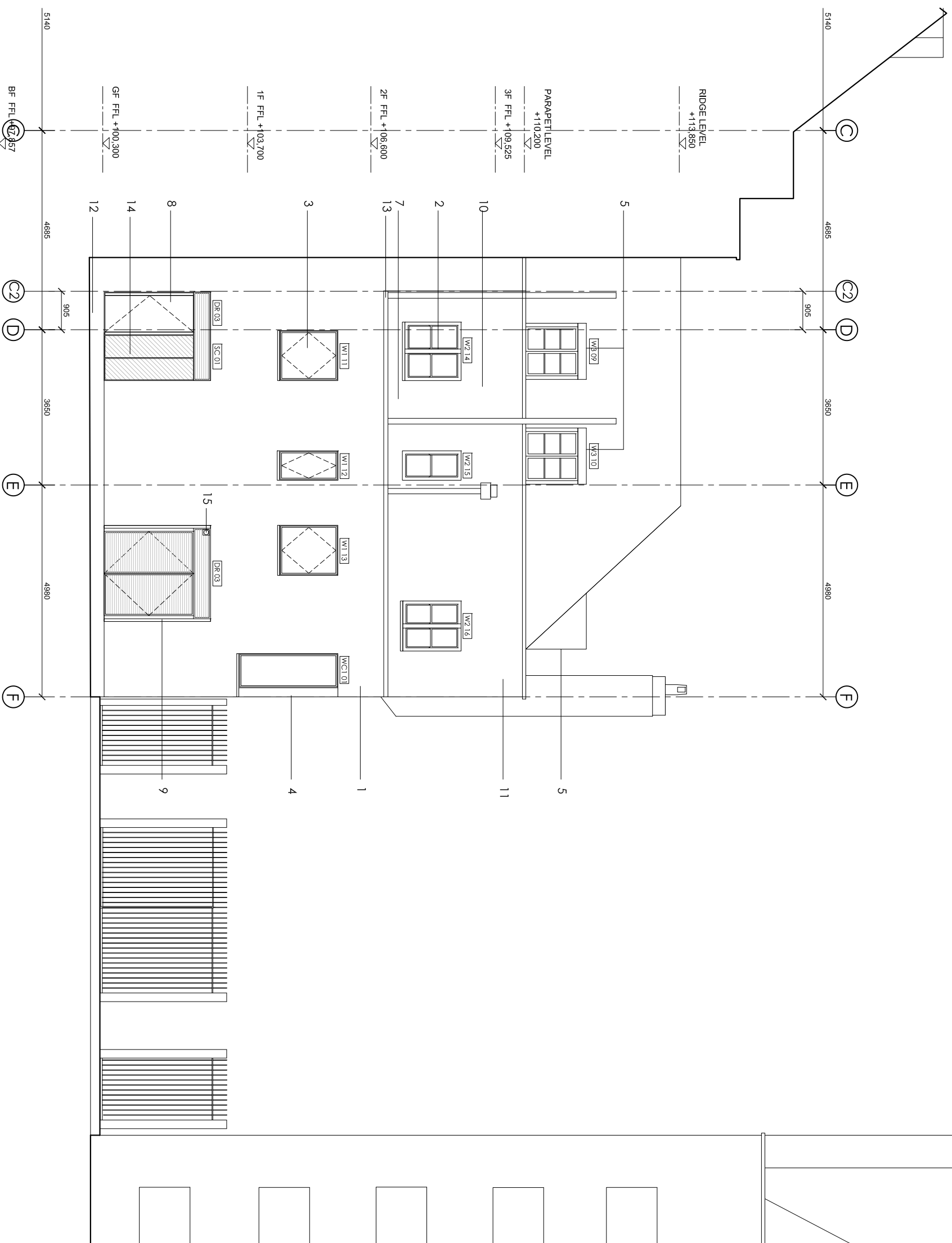


- Notes
- TO BE READ IN CONJUNCTION WITH STRUCTURAL ENGINEER DRAWINGS
 - TO BE READ IN CONJUNCTION WITH MECHANICAL ENGINEER DRAWINGS
 - 1 HOUR FIRE RATING TO ALL STRUCTURAL ELEMENTS.
 - 1 HOUR FIRE RATING TO ALL INTERNAL PARTITIONS BETWEEN DIFFERENT UNITS
 - 30 MIN. FIRE RATING TO ALL INTERNAL PARTITIONS AND FLOORS
 - ALL WORKS TO COMPLY WITH BUILDING REGULATIONS

LEGEND

1. SELF FINISH INSULATED RENDERED WALL
2. EXISTING SASH WINDOW IN ABERNACE
3. PFC ALUMINIUM TILT & TURN OPENABLE WINDOWS WITH STRUCTURAL GLAZED SASH
4. FRAMELESS FIXED GLAZED CORNER WINDOW
5. PAINTED ZINC CLAD DORMER
OUTLINE TO WALKER HOUSE
6. NEW SOIL VENT PIPE AND RAIN WATER PIPE WITH HOPPER LOCATION RETAINED
7. PFC ALUMINIUM GLAZED SCREEN WITH EXIT DOOR
8. FLUSH PFC STEEL OPENABLE LOUVERED SCREEN REF: LANG&FULTON DELTA WING 90
9. EXISTING SVP TO BE RETAINED
10. EXISTING RENDER MADE GOOD + REPAINTED
11. RECONSTITUTED STONE PLINTH
12. RECONSTITUTED STONE CORNING
13. BACK PAINTED GLASS FIXED PANEL. COLOUR TO MATCH RENDER
14. BOLTER FLUE
- 15.



Revision	Date	Reason	Initial
/	27.04.16	DETAIL DESIGN	GM
A	07.06.16	DETAIL DESIGN	GM
B	14.06.16	DETAIL DESIGN	GM

Dimensions based on topological survey by EPC commercial surveys Ltd
All dimensions must be checked on site and not scaled from this drawing
© Mark Fairhurst Ltd.

mark fairhurst ARCHITECTS

48A Union Street, London, SE1 1TD. T:020 7407 7070. E:info@mark-fairhurst.co.uk
Project: Cock Tavern, 23 Phoenix Road, London NW1 1HB
Client: Flamesstrike Ltd.

Drawing title: Proposed North East Elevation

Scale: 1:100@A3, 1:50@A1 Date: 14.06.16 Drawn by: GM

Project number: 1250 Drawing number: WD133

Status: DETAIL DESIGN Revision: B