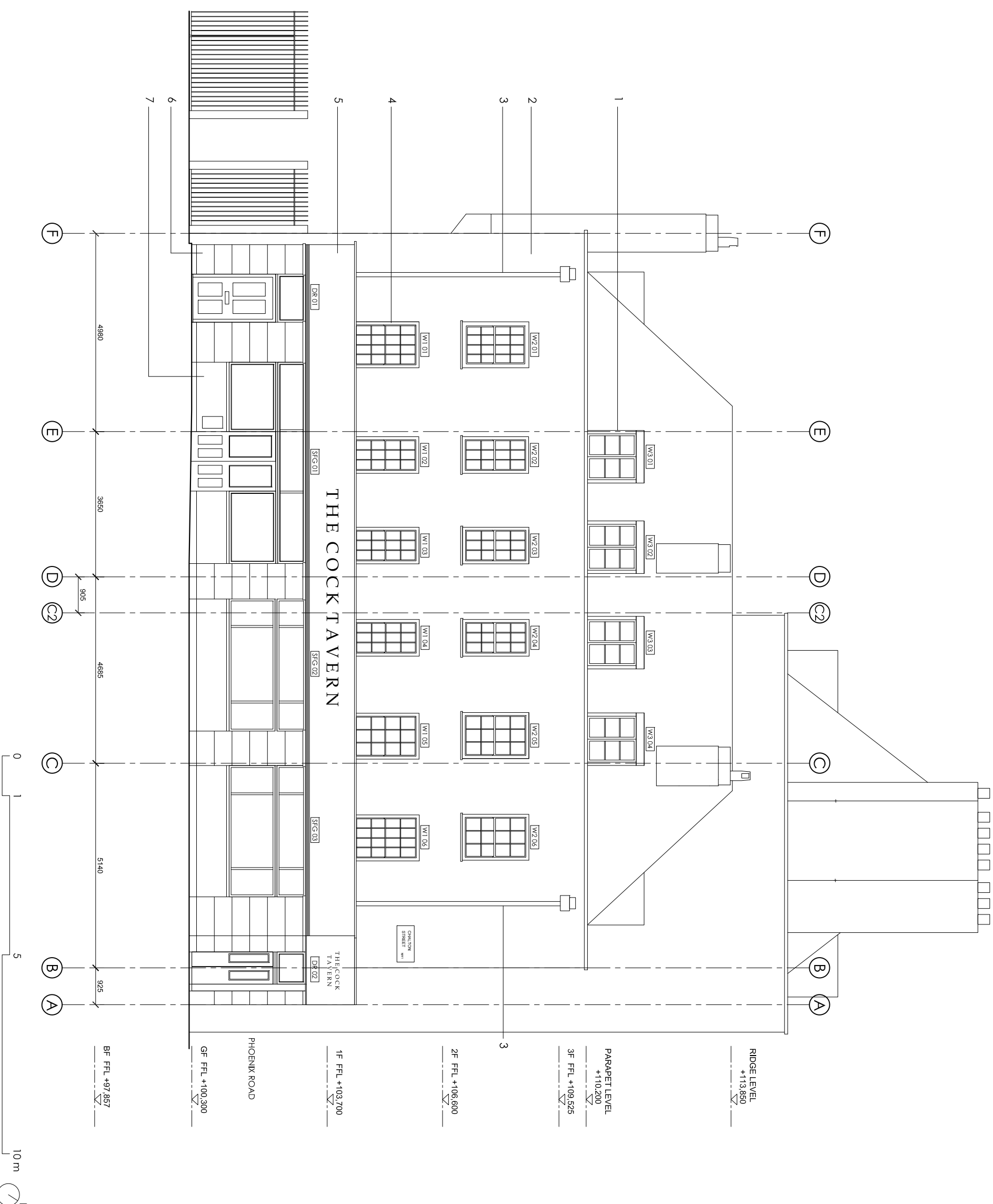


Notes

- TO BE READ IN CONJUNCTION WITH STRUCTURAL ENGINEER DRAWINGS
- TO BE READ IN CONJUNCTION WITH MECHANICAL ENGINEER DRAWINGS
- 1 HOUR FIRE RATING TO ALL STRUCTURAL ELEMENTS.
- 1 HOUR FIRE RATING TO ALL INTERNAL PARTITIONS BETWEEN DIFFERENT UNITS
- 30 MIN. FIRE RATING TO ALL INTERNAL PARTITIONS AND FLOORS
- ALL WORKS TO COMPLY WITH BUILDING REGULATIONS

LEGEND

1. ZINC CLAD DORMER WINDOW WITH PAINTED TIMBER CASEMENTS
2. EXISTING RENDER MADE GOOD + PAINTED
3. EXISTING RAINWATER PIPE MADE GOOD + PAINTED
4. EXISTING SASH WINDOWS IN ABEVANCE
5. FASCIA RESTORED AND REPAINTED/ SIGNAGE ADDED
6. RUSTICATION REINSTITATED + RENDERED AND PAINTED
7. ORIGINAL SHOPFRONT + WINDOWS AND DOORS RESTORED AND REPAINTED



Revision	Date	Reason	Initial
/	27.04.16	DETAIL DESIGN	GM
A	07.06.16	DETAIL DESIGN	GM

Dimensions based on topological survey by EPC commercial surveys Ltd  
 All dimensions must be checked on site and not scaled from this drawing  
 © Mark Fairhurst Ltd.

**mark fairhurst ARCHITECTS**

48A Union Street, London, SE1 1TD, T:020 7407 7070, E:info@mark-fairhurst.co.uk  
 Project: Cock Tavern, 23 Phoenix Road, London NW1 1HB  
 Client: Flamesrike Ltd.

Drawing title: Proposed South West Elevation  
 Scale: 1:100@A3, 1:50@A1 Date: 07.06.16 Drawn by: GM  
 Project number: 1250 Drawing number: WD130  
 Status: DETAIL DESIGN Revision: /