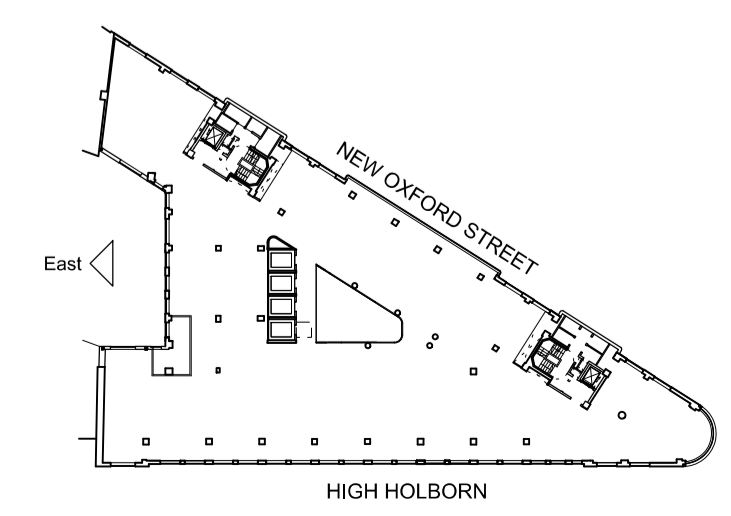
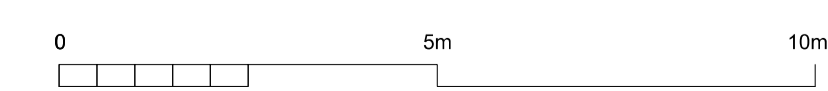


CDM:

Notes:



Revision history:

Project:	Commonwealth House
Drawing title:	Proposed Dunn's Passage East Elevation: Boundary Wall / Balustrade
1975 PL 91	Rev. -
Scale: 1:100@A1 / 1:200@A3	

Orms

1 Oliver's Yard
55-71 City Road
London EC1Y 1HQ

0207 833 8533
orms@orms.co.uk
orms.co.uk

Do not scale. All dimensions to be confirmed on site. Information contained in this drawing is the sole copyright of Orms designers + architects ltd and is not to be reproduced without permission.