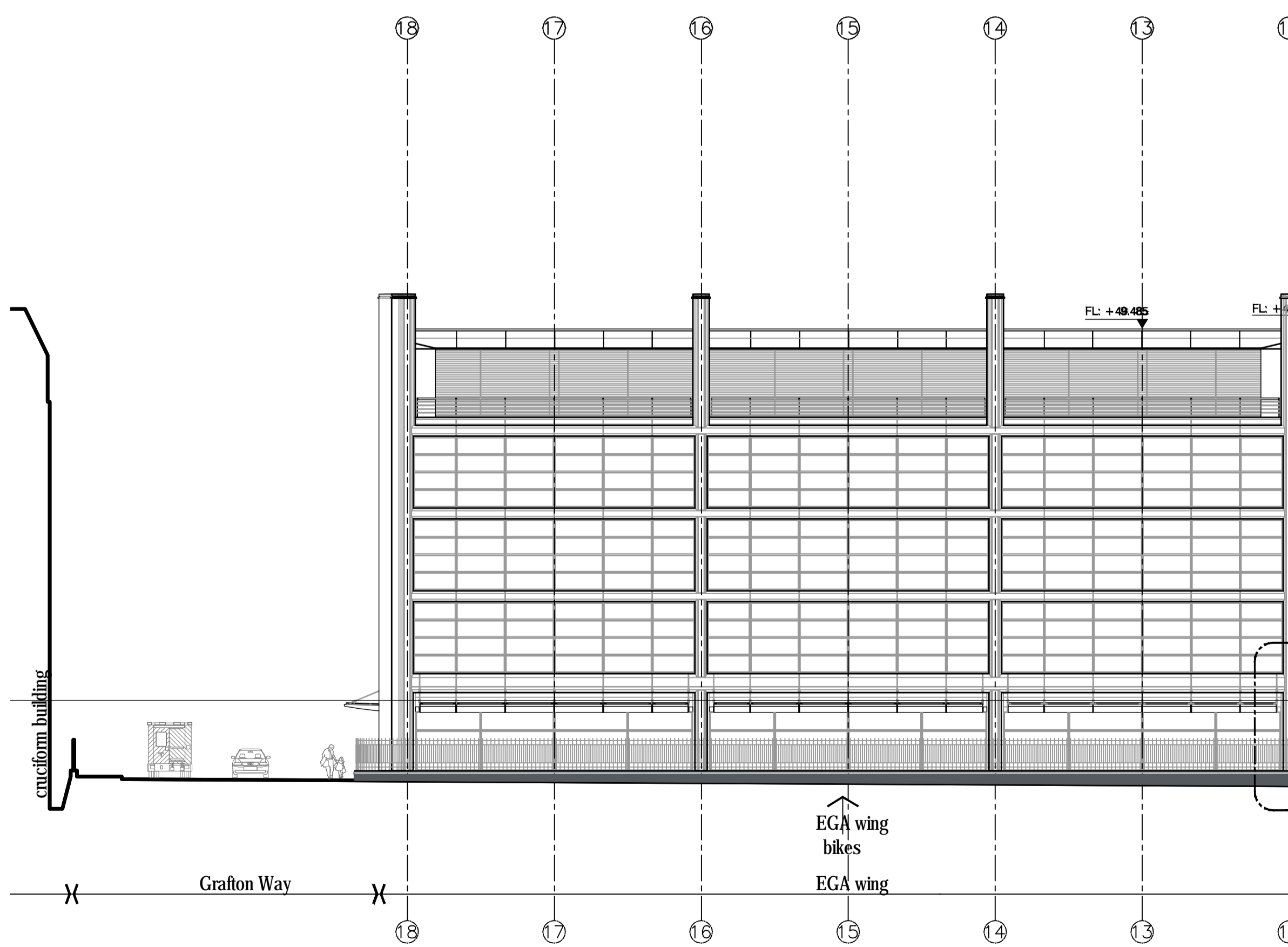
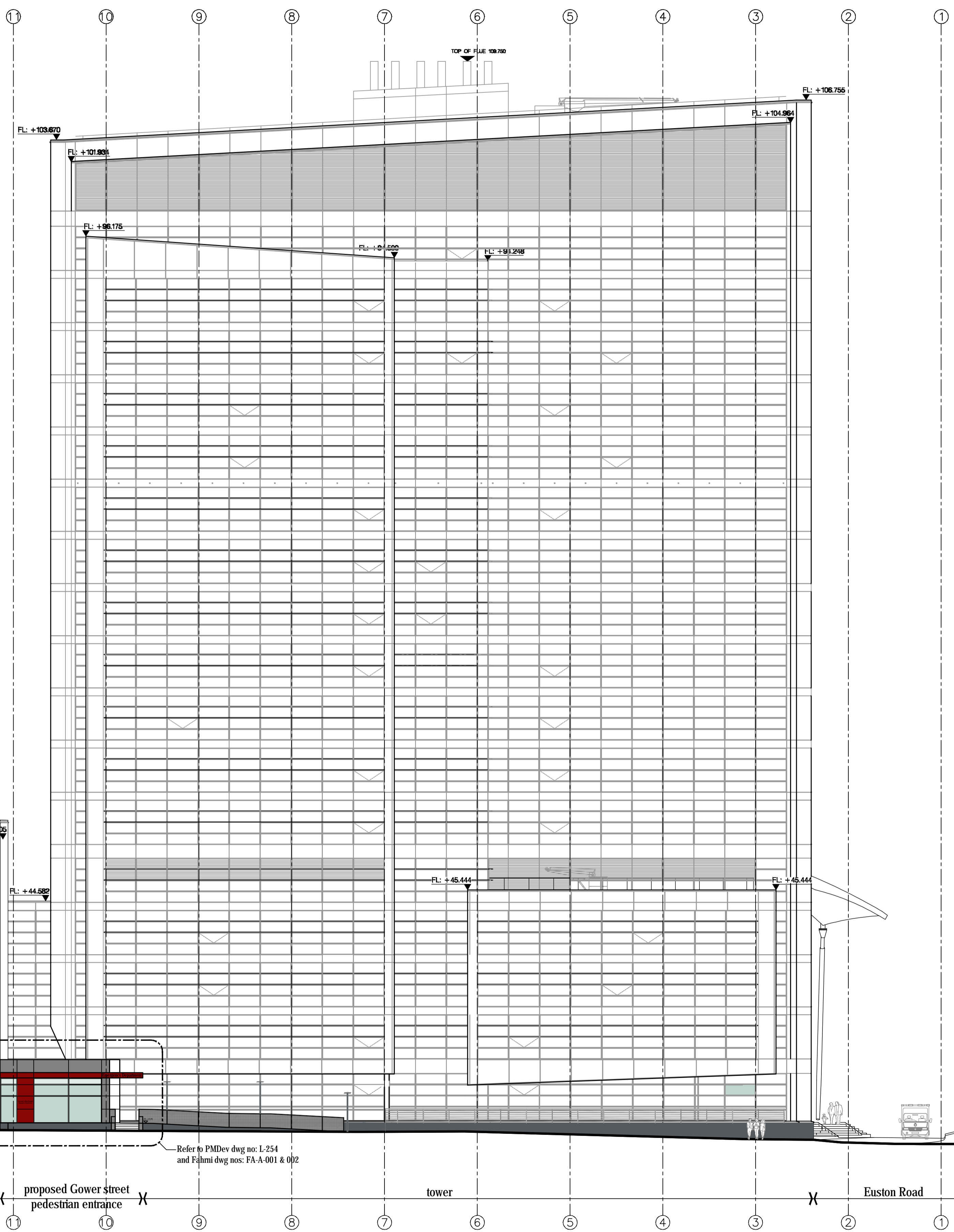
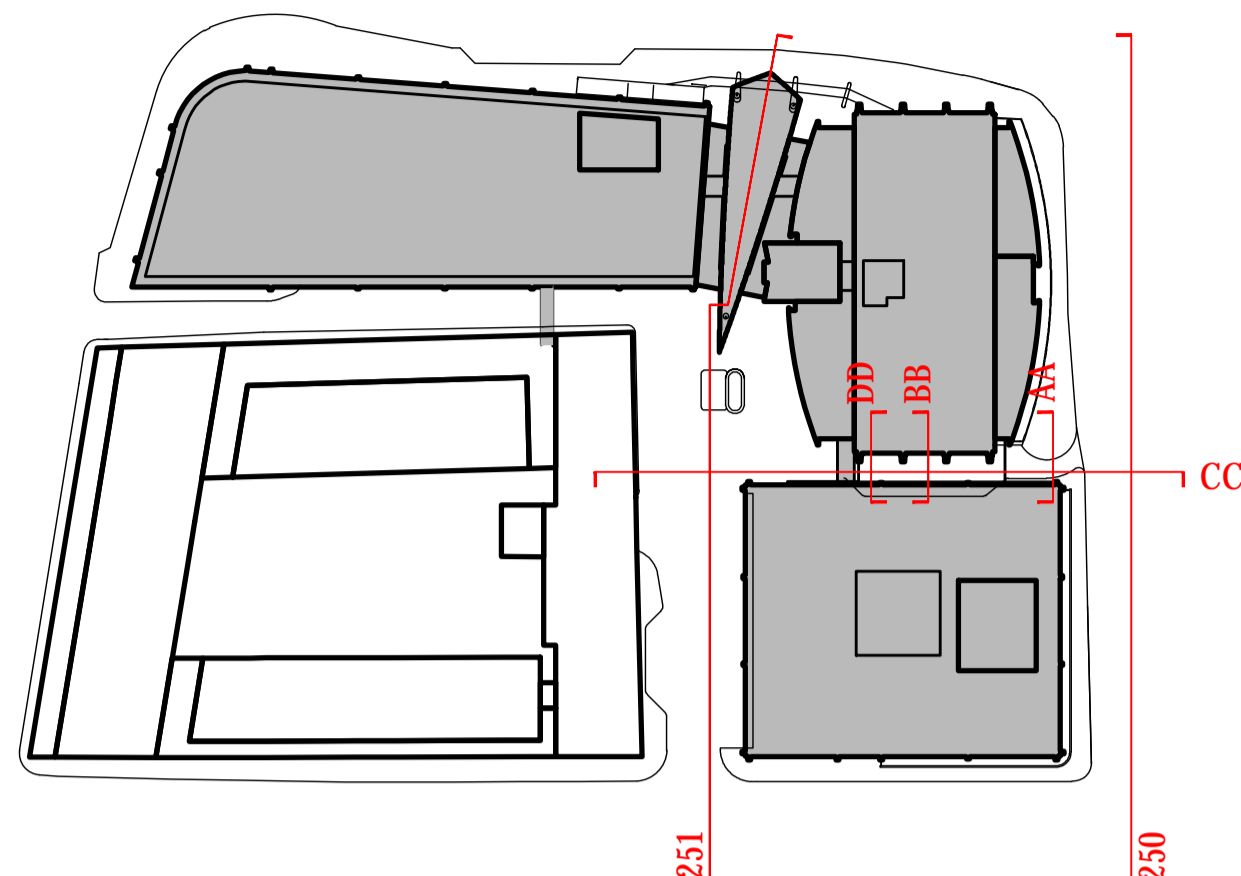


NOTES
 DO NOT SCALE THIS DRAWING
 THIS DRAWING IS COPYRIGHT PM DEVEREUX
 ALL DIMENSIONS TO BE CONFIRMED ON SITE
 ANY INCONSISTENCIES TO BE REPORTED TO ARCHITECT IMMEDIATELY



Rev	Date	Comment	L1	L2
C	24.06.2016	Entrance updated to suit Fahmi design	RH	HJ
B	15.04.2016	Tender Issue	RH	HJ
A	15.01.2016	East elevation revised design	RH	RJ
*	21.10.2015	First Issue	ED	RH

Key - L1 = level 1 drawn L2 = level 2 checked



LONDON
 200 Upper Richmond Road
 London SW15 2SH
 T +44 (0)20 8780 1800
 E design@pmdevereux.com
 W www.pmdevereux.com

a PM Group company

CLIENT
 HMU

PROJECT
 A&E Redevelopment
 Phase 6

TITLE
 Proposed East Elevation

SCALE @ A1	STATUS
1:200	Tender
DRAWING NUMBER	REVISION
GB101011020	L-252 C