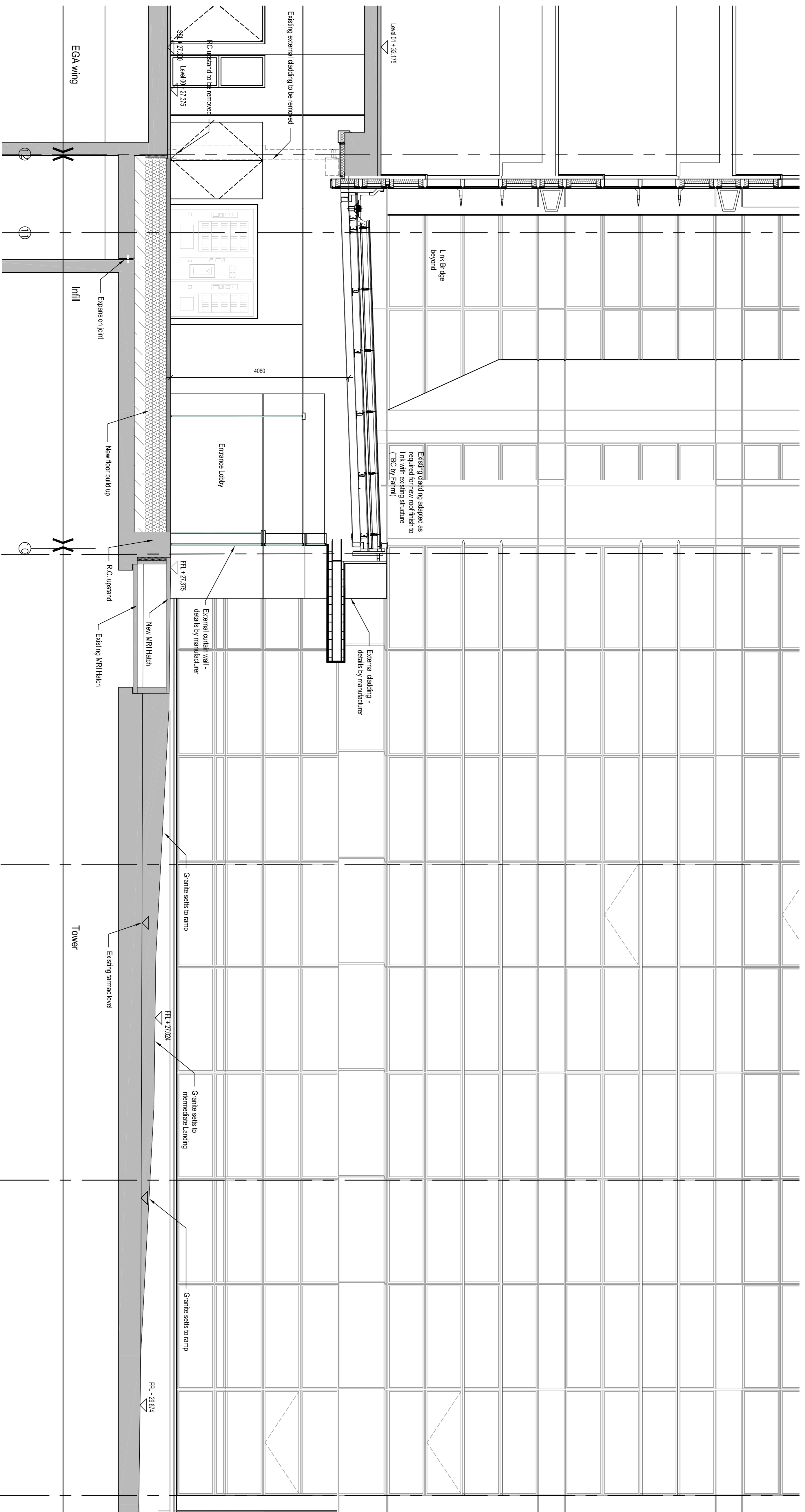
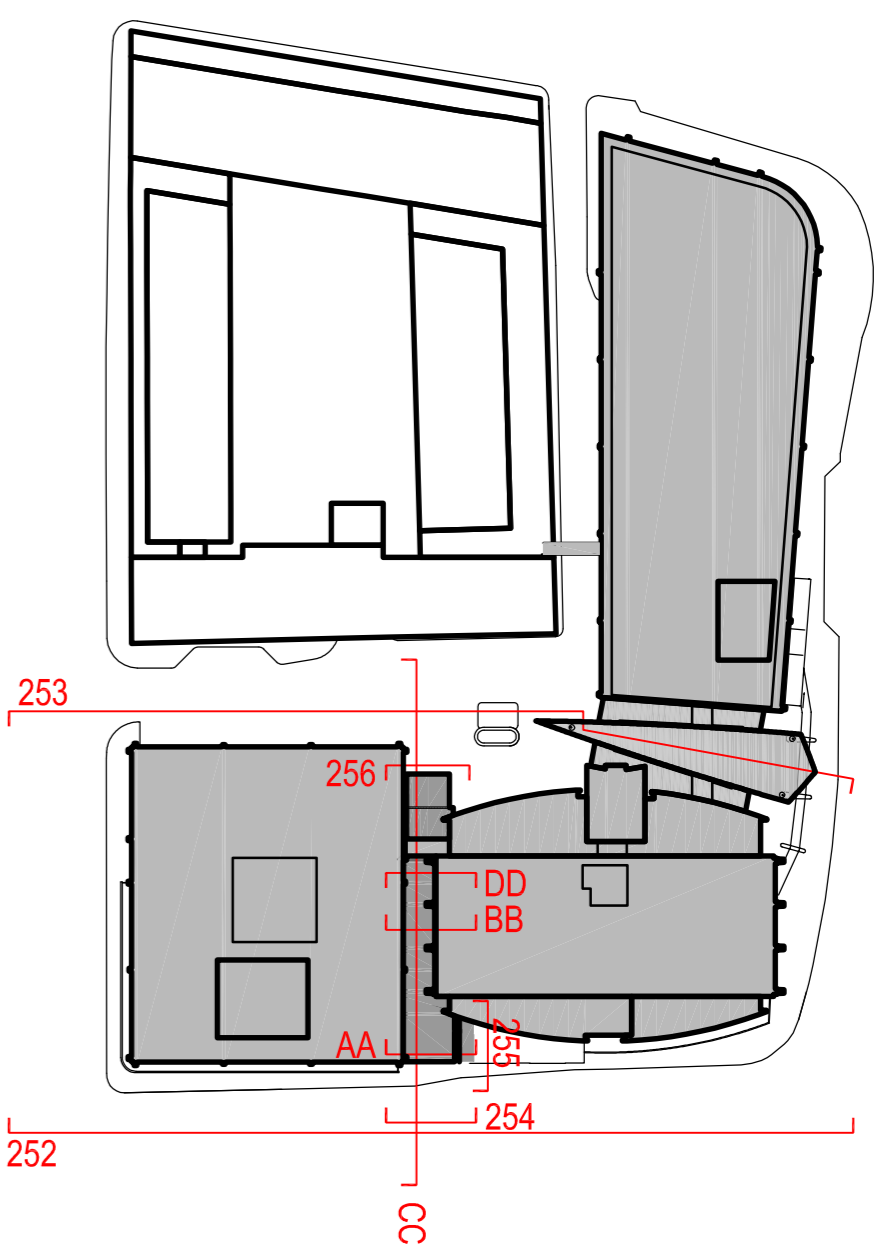


NOTES
 DO NOT SCALE THIS DRAWING
 THIS DRAWING IS COPYRIGHT PM DEVEREUX
 ALL DIMENSIONS TO BE CONFIRMED ON SITE
 ANY INCONSISTENCIES TO BE REPORTED TO ARCHITECT IMMEDIATELY



Rev	Date	Comment	L1 - L2
B	15.04.2018	Tender Issue	RH - HU
A	15.01.2018	East elevation revised design	RH - RU
•	21.10.2015	First Issue	ED - RU

Key - L1 = level 1 drawn L2 = level 2 shaded



LONDON
 200 Upper Richmond Road
 London SW15 2SA
 T +44 (0)20 8876 9000
 E design@pndevereux.com
 W www.pndevereux.com
 a PM Group company

CLIENT
HMU

PROJECT
**A&E Redevelopment
 Phase 6**
 TITLE
Proposed Section AA

SCALE @ A1 STATUS
 1:50 Tender
 DRAWING NUMBER REVISION
 GB101011020 L-205 B