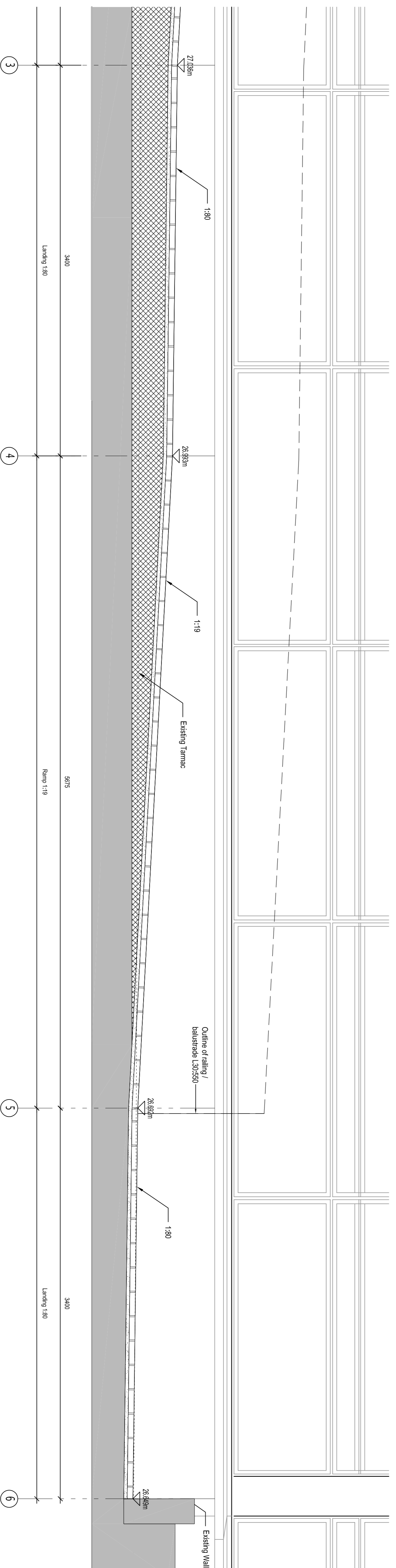
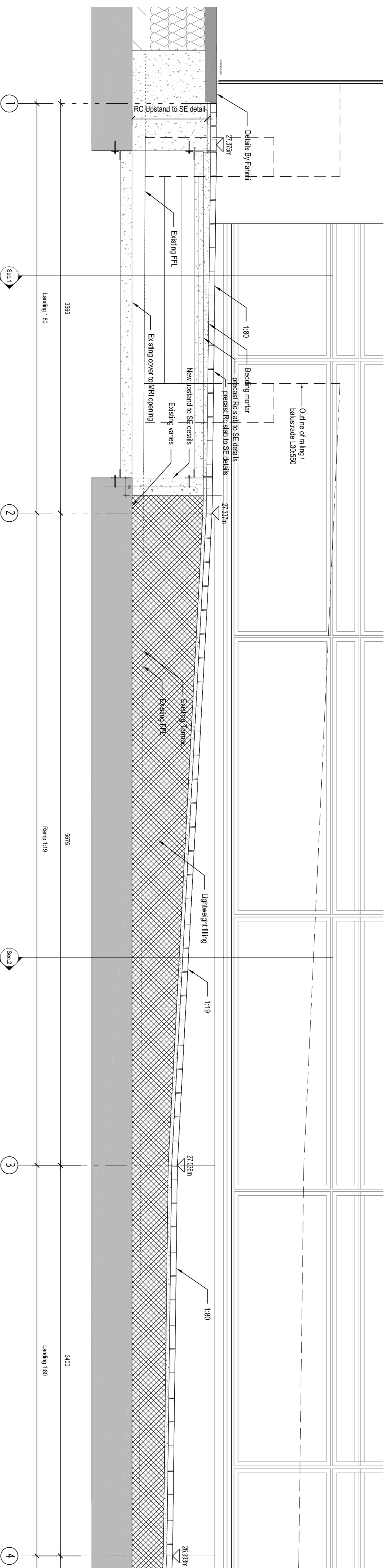
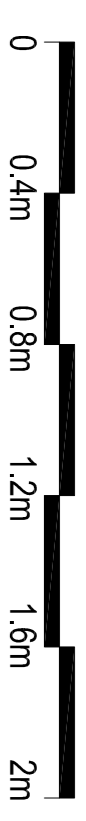


NOTES  
DO NOT SCALE THIS DRAWING  
THIS DRAWING IS COPYRIGHT PM DEVEREUX  
ALL DIMENSIONS TO BE CONFIRMED ON SITE  
ANY INCONSISTENCIES TO BE REPORTED TO ARCHITECT IMMEDIATELY



Rev	Date	Comment	Rev	By
A	15.04.2016	Tender Issue	RM-HU	
•	09.02.2016	First Issue	ED-RH	

Key - L1 = level 1 drawn L2 = level 2 shaded



LONDON  
200 Upper Richmond Road  
London SW7 7ZS  
T +44 (0)20 8749 4000  
E [desk@pndevereux.com](mailto:desk@pndevereux.com)  
W [www.pndevereux.com](http://www.pndevereux.com)  
a PM Group company

CLIENT  
**HMIU**

PROJECT  
**A&E Redevelopment  
Phase 6**

TITLE  
**Ramp Long Section**

SCALE @ A1	STATUS	REVISION
1:20	Tender	
DRAWING NUMBER		
GB101011020	A-902	A