

Emergency Department Entrance – Infill (Phase 6)

Gower Street and Beaumont Street Entrances

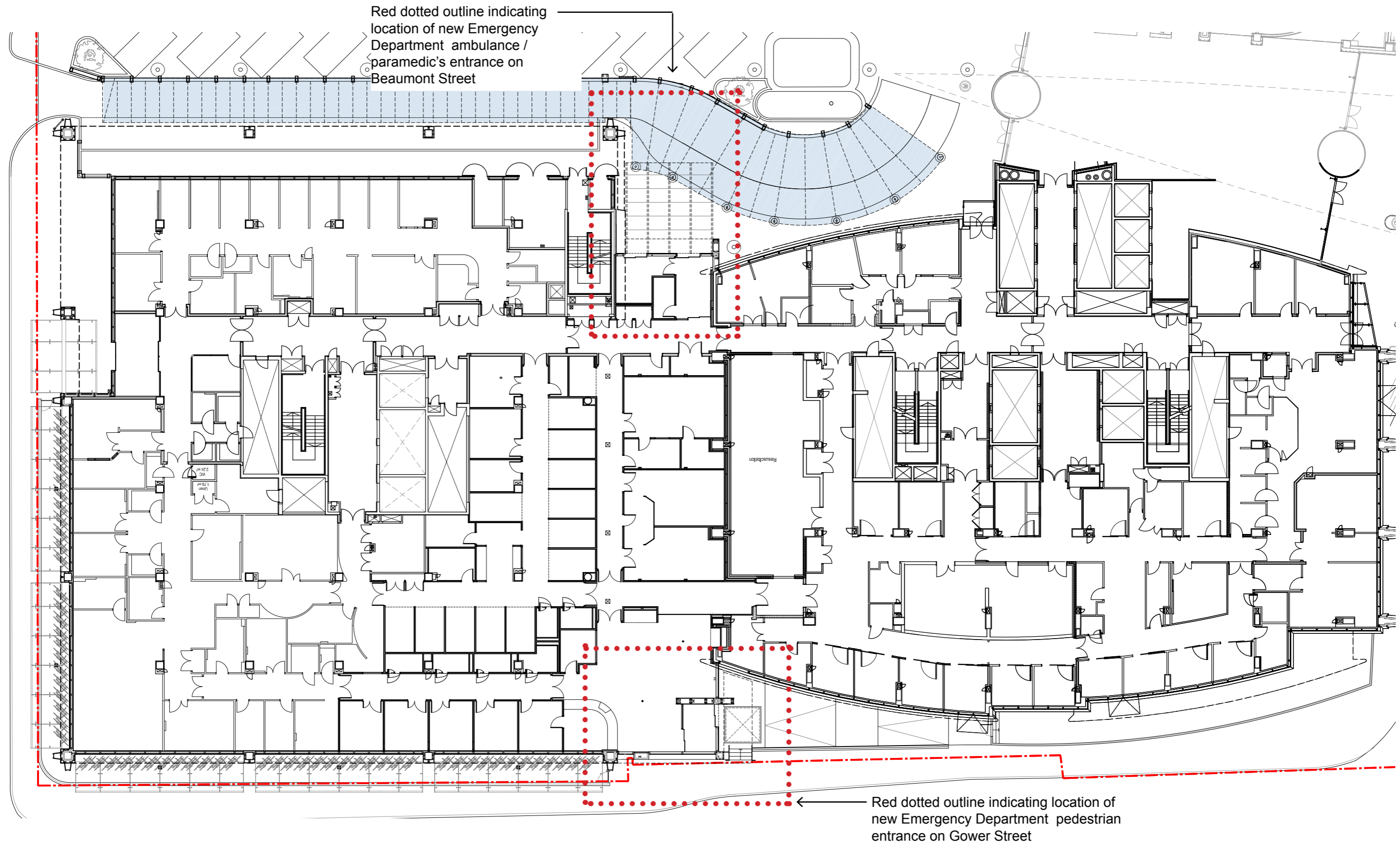
15/06/2016



Design.

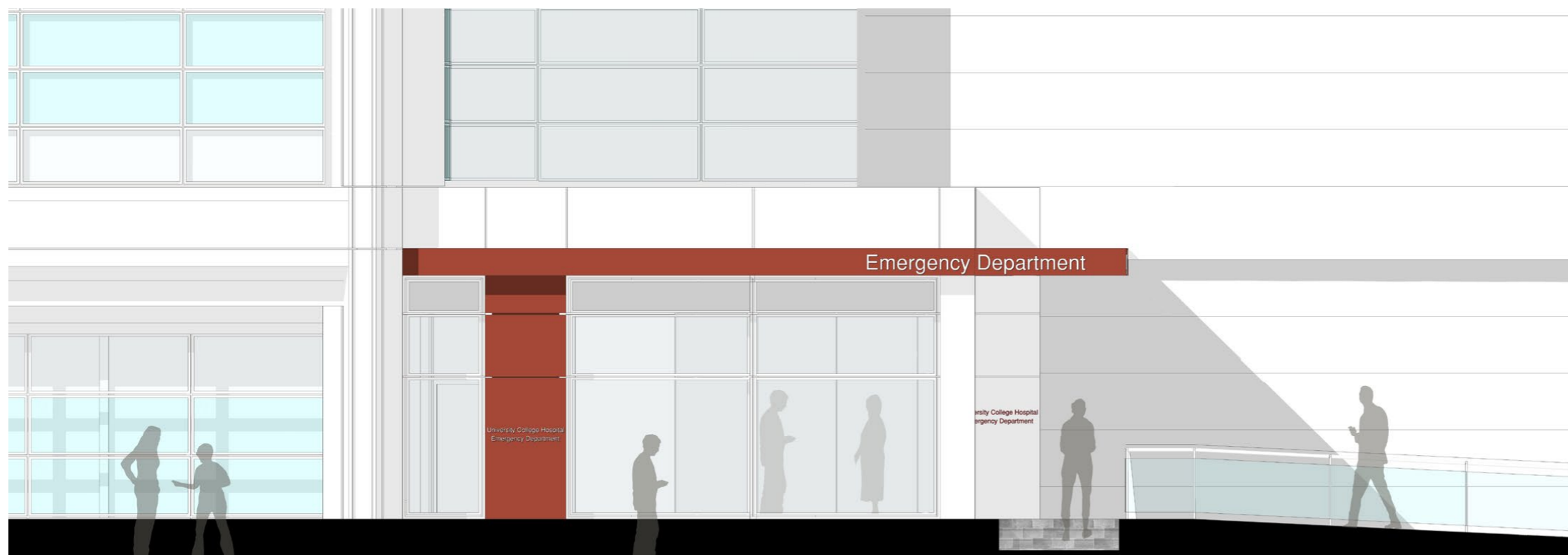
Emergency Department Redevelopment – Infill (Phase 6)

Current approved planning - Emergency Department Pedestrian Entrance - Gower Street

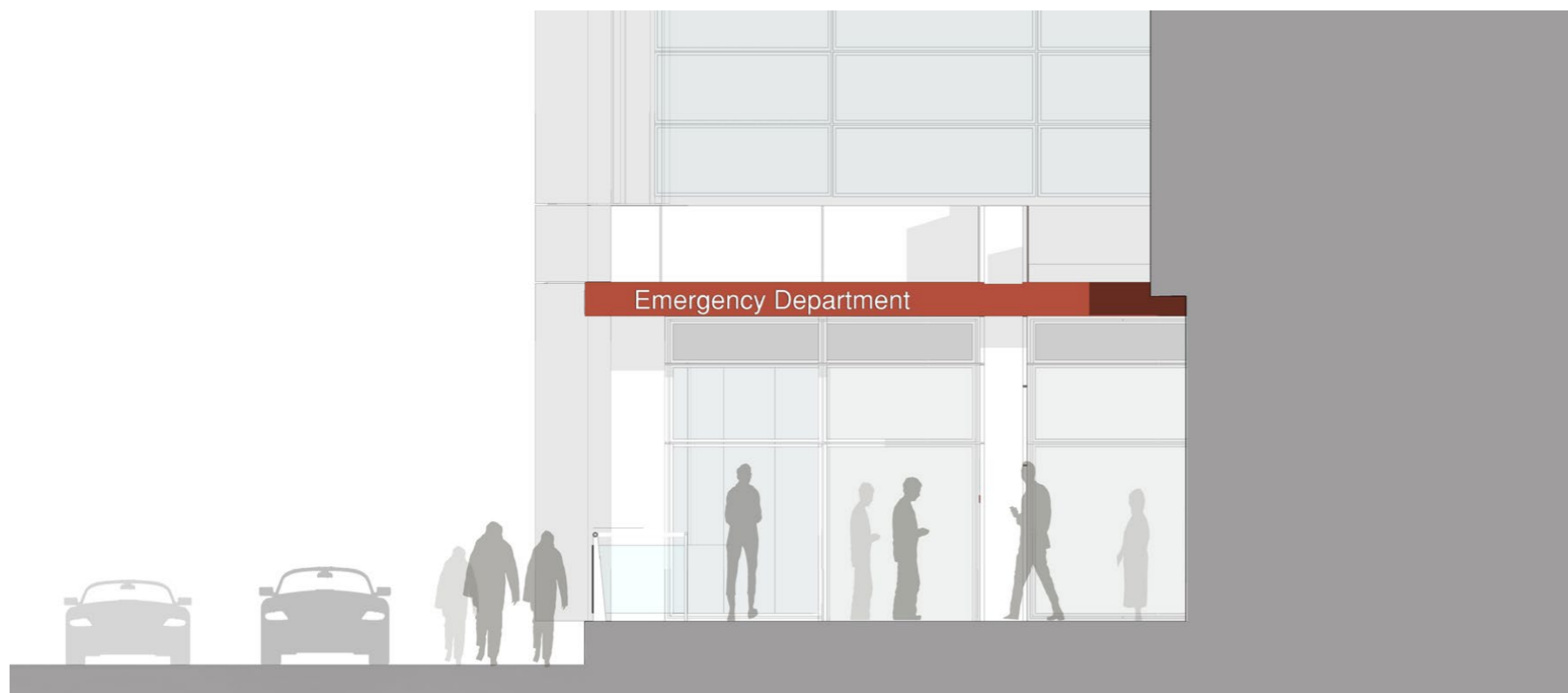


Emergency Department Redevelopment – Infill (Phase 6)

Proposed – Gower Street – East & North Elevations



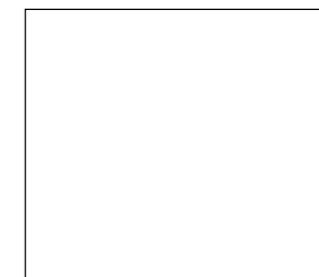
East elevation indicating text signage



North elevation indicating text signage



RAL 2002



PPC White Colour 29/90153
- cladding, windows and doors to be the same white colour reference as existing

Proposed colour palette for cladding and windows/doors

Emergency Department Redevelopment – Infill (Phase 6)

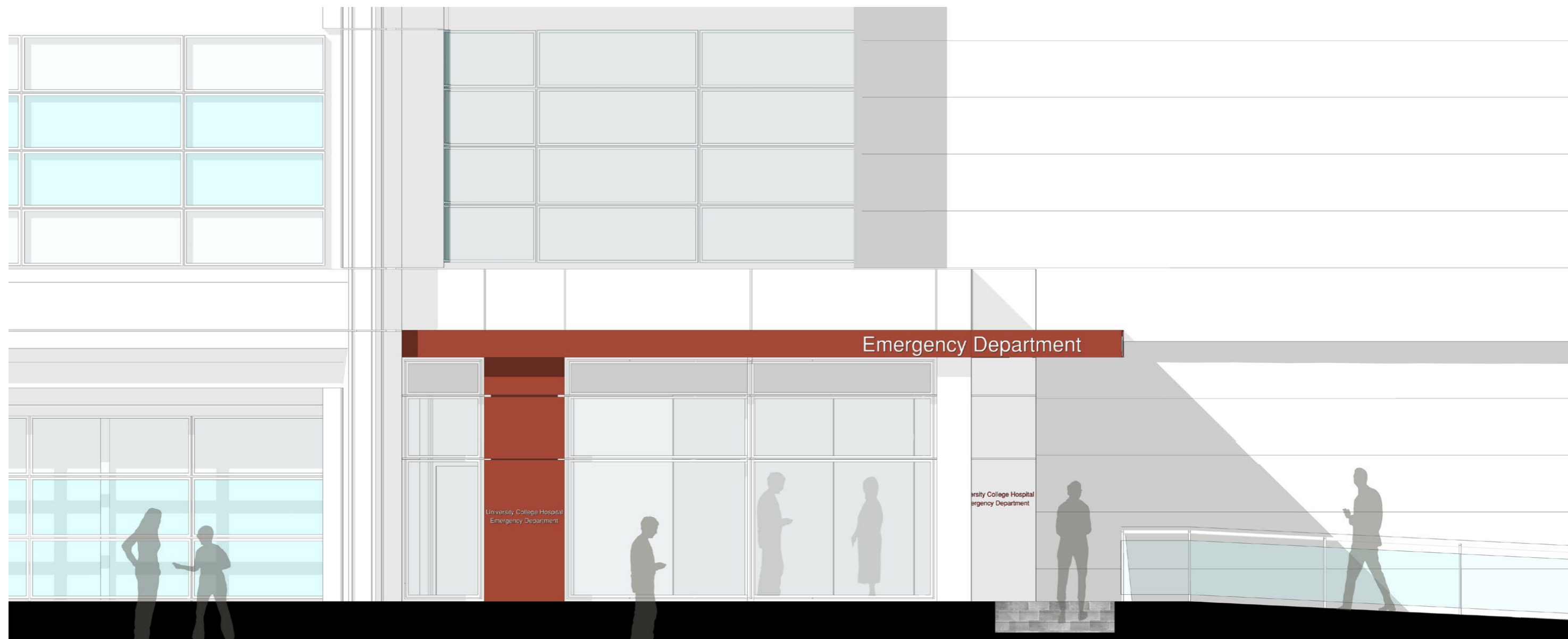
Proposed – Gower Street – 3D Visual



North East perspective view

Emergency Department Redevelopment – Infill (Phase 6)

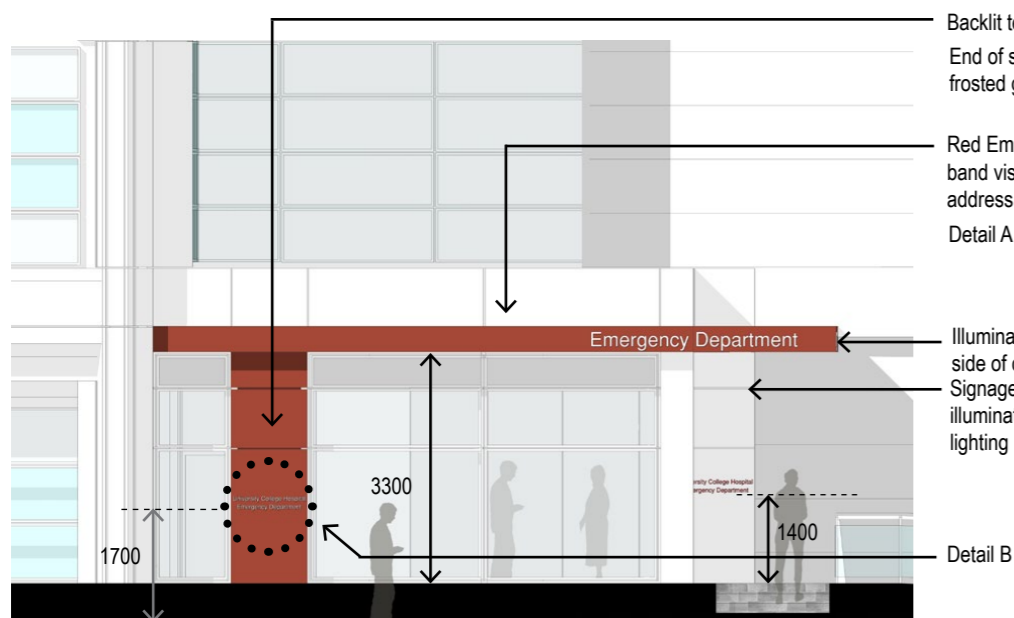
Proposed – Gower Street – East and North Elevations - Signage



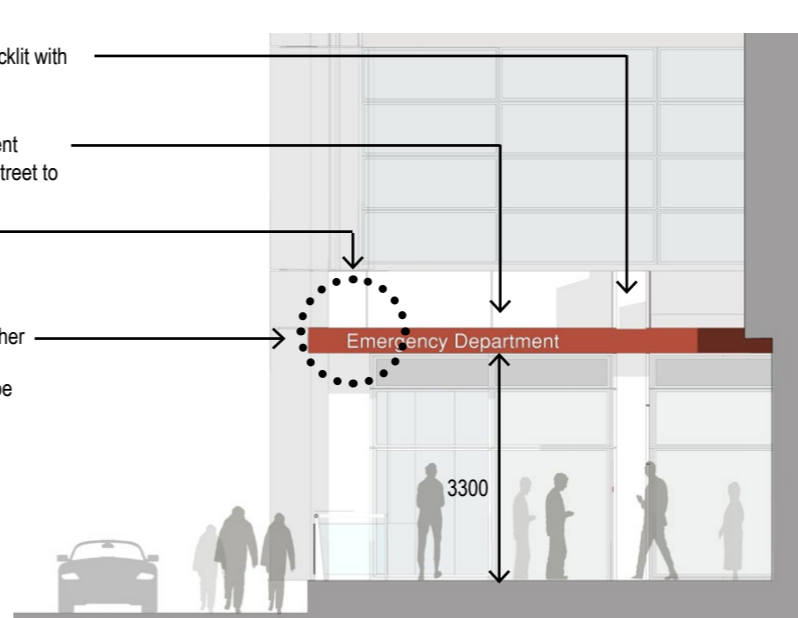
East elevation indicating **University College Hospital** signage

Emergency Department Redevelopment – Infill (Phase 6)

Proposed – Gower Street – Lighting & Signage Proposal



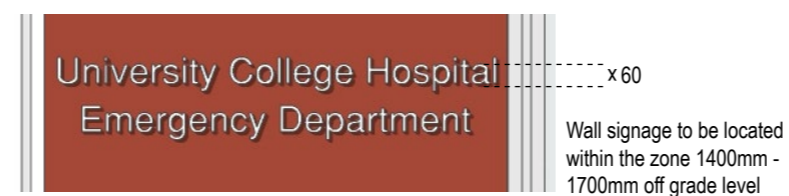
East elevation indicating signage location and dimensions



North elevation indicating signage location and dimensions

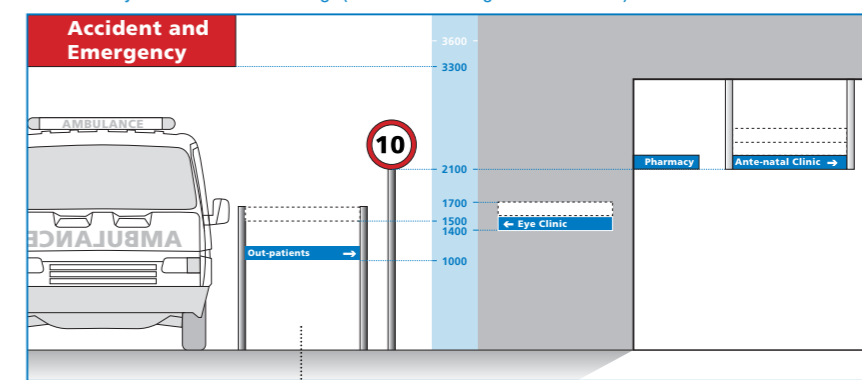


Detail A - Canopy Signage



Detail B - Wall Signage

This diagram gives general guidance on the suggested height for positioning different types of sign, determined by the intended use of the sign (all dimensions are given in millimetres)



NOTE: Position external signs that are likely to be obscured by passing or parked vehicles at least 1500 mm from the ground. Signs that are located away from possible obstructions can be positioned lower.

NHS Wayfinding Guidance Section 3.9 - Positioning of signs diagram

The viewing distances for the typeface "Health Alphabet", specified in HTM 65 (1984)

X-height	Viewing distance with normal vision (6/9 acuity)	Viewing distance registered partially sighted (6/60 acuity) ¹	Suggested sign type
15 mm	up to 7.5 m	no more than 0.5 m	directories
30 mm	up to 15 m	no more than 1 m	door identity signs
40 mm	up to 20 m	no more than 1.5 m	internal location & direction signs
60 mm	up to 30 m	no more than 2 m	internal and external signs
90 mm	up to 45 m	no more than 3 m	external location & direction signs
120 mm	up to 60 m	no more than 4 m	location signs
200 mm	up to 100 m	no more than 7 m	fascia signs

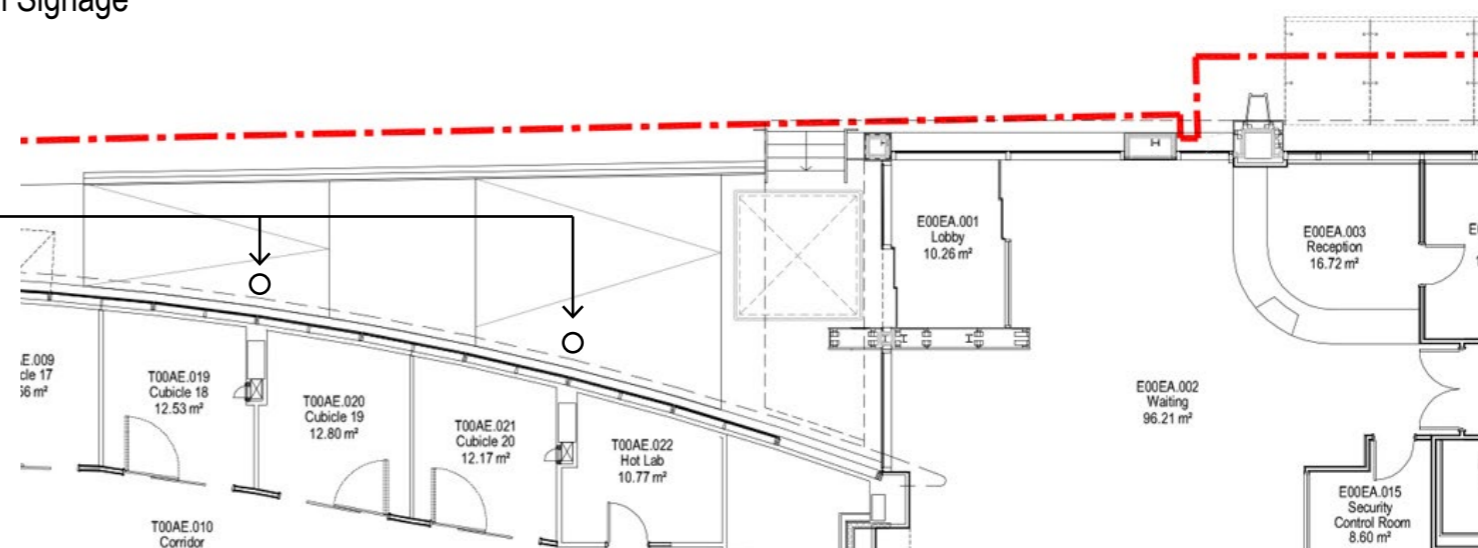
- These figures should only be used as a rough guide to the viewing distances for these type sizes
- Many factors affect the type size required (see opposite)
- The figures for people with visual impairments suggest that increasing the type size on signs is often not an appropriate way of producing suitable wayfinding aids for people with visual impairments.

NHS Wayfinding Guidance Section 3.2 - Type size



3D visual indicating lighting and signage

2 number additional street lighting posts



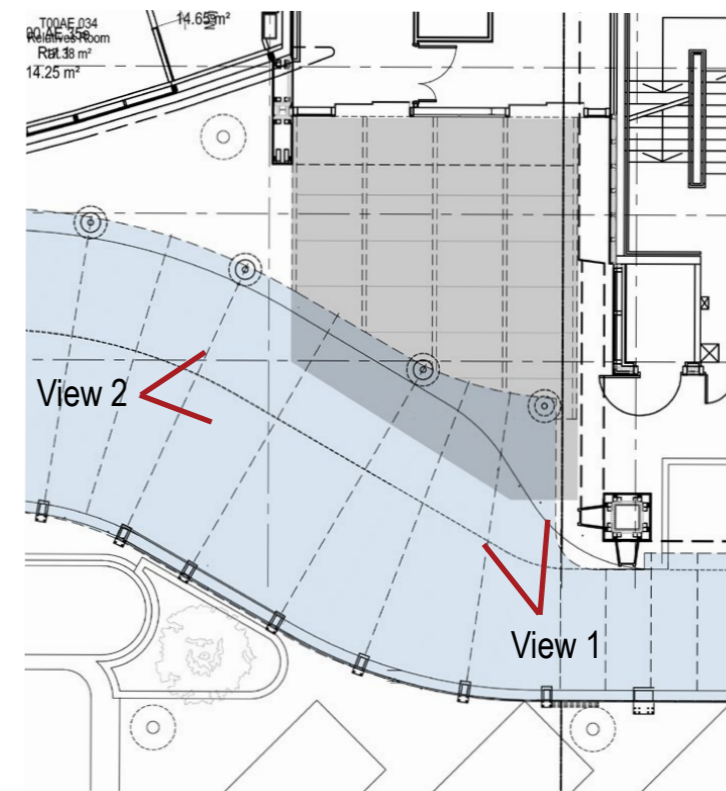
Plan indicating street lighting location

Emergency Department Redevelopment – Infill (Phase 6)

Proposed – Beaumont Place Elevations



View 1 towards ambulance / paramedic's entrance



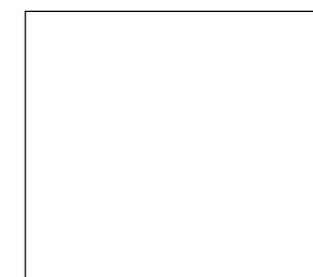
Key plan indicating views



View 2 towards side spine wall



RAL 2002

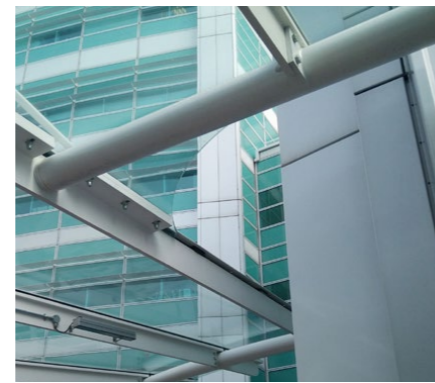
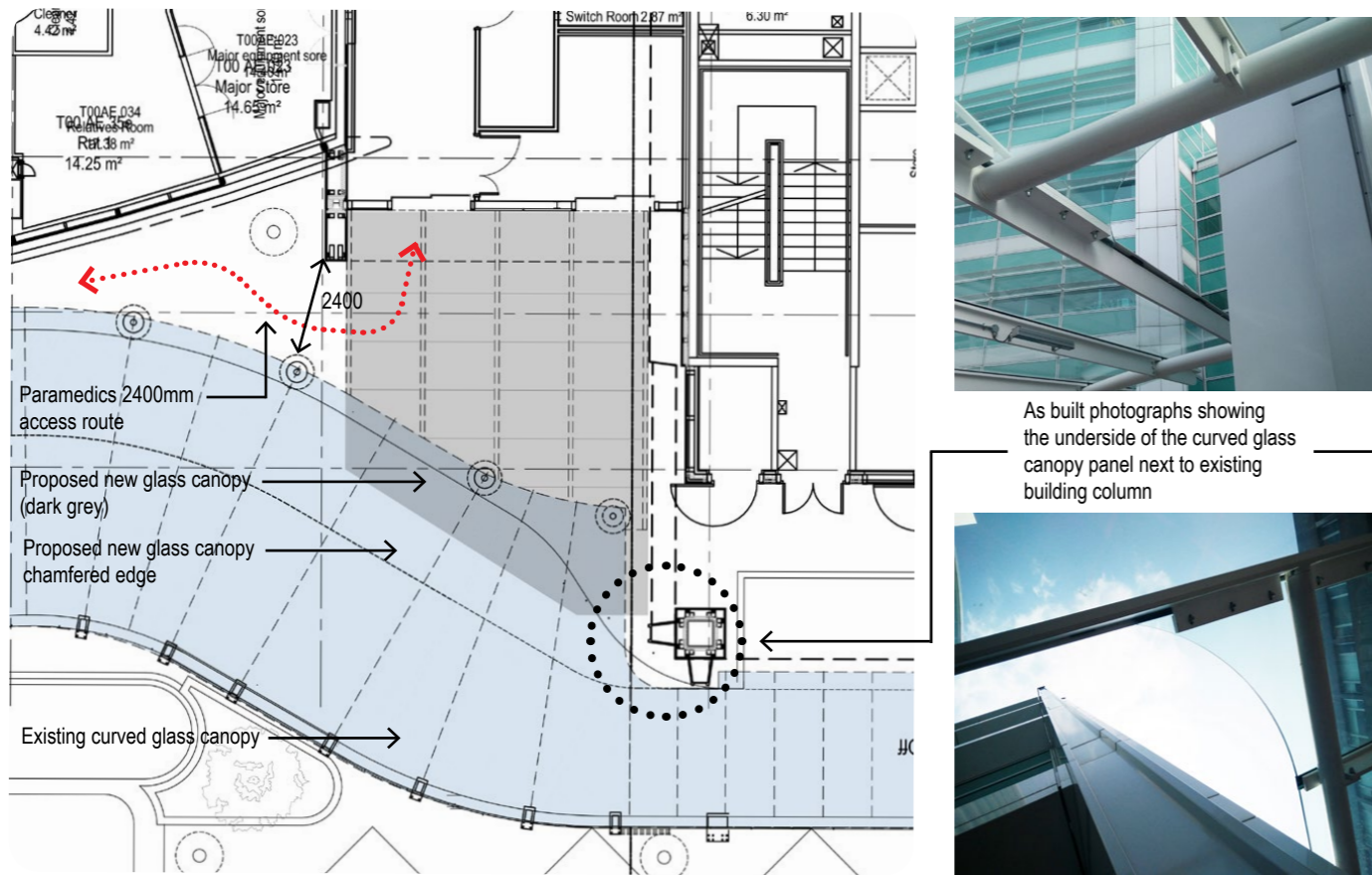


PPC White Colour 29/90153
- cladding, windows and doors to be the same white colour reference as existing

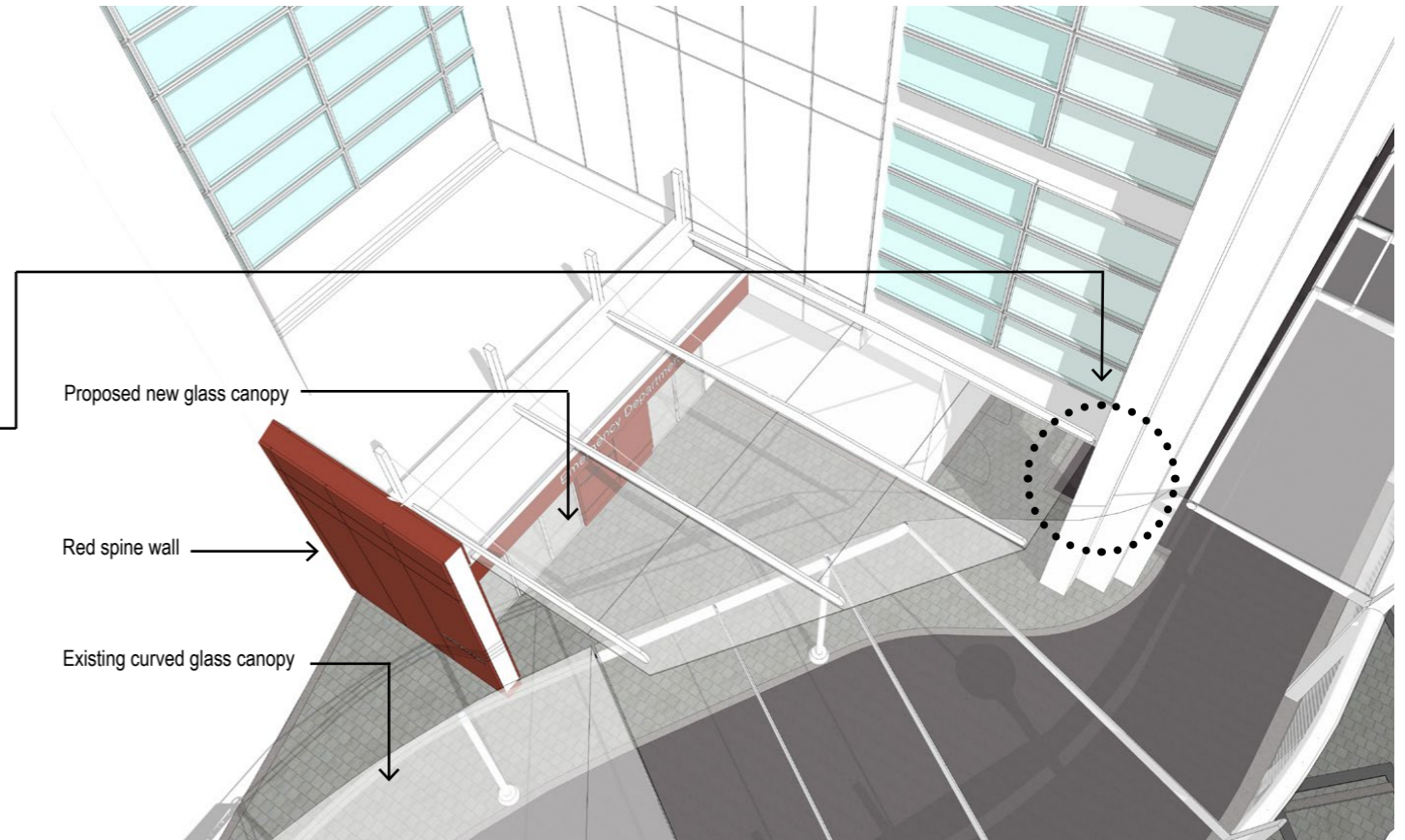
Proposed colour palette for cladding and windows/doors

Emergency Department Redevelopment – Infill (Phase 6)

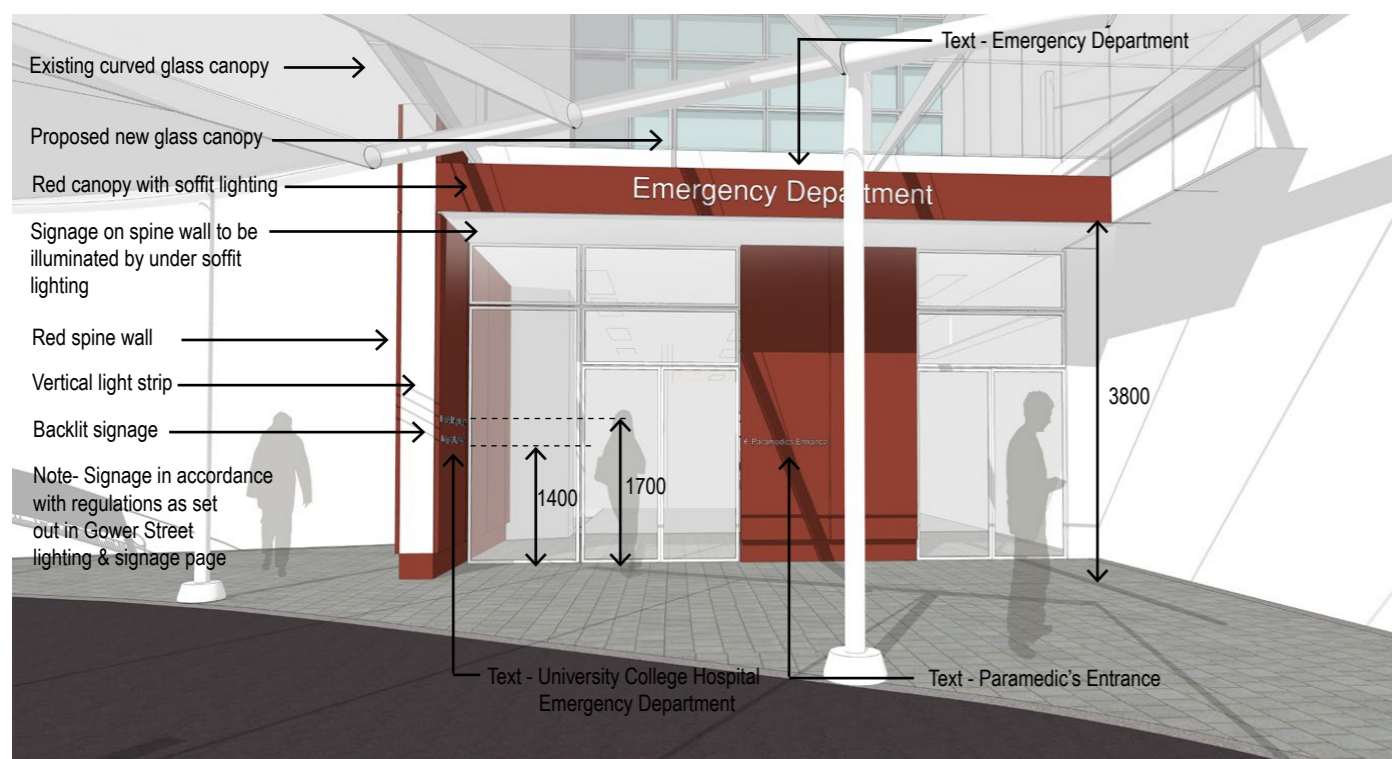
Proposed – Beaumont Place – Lighting, Signage and Canopy



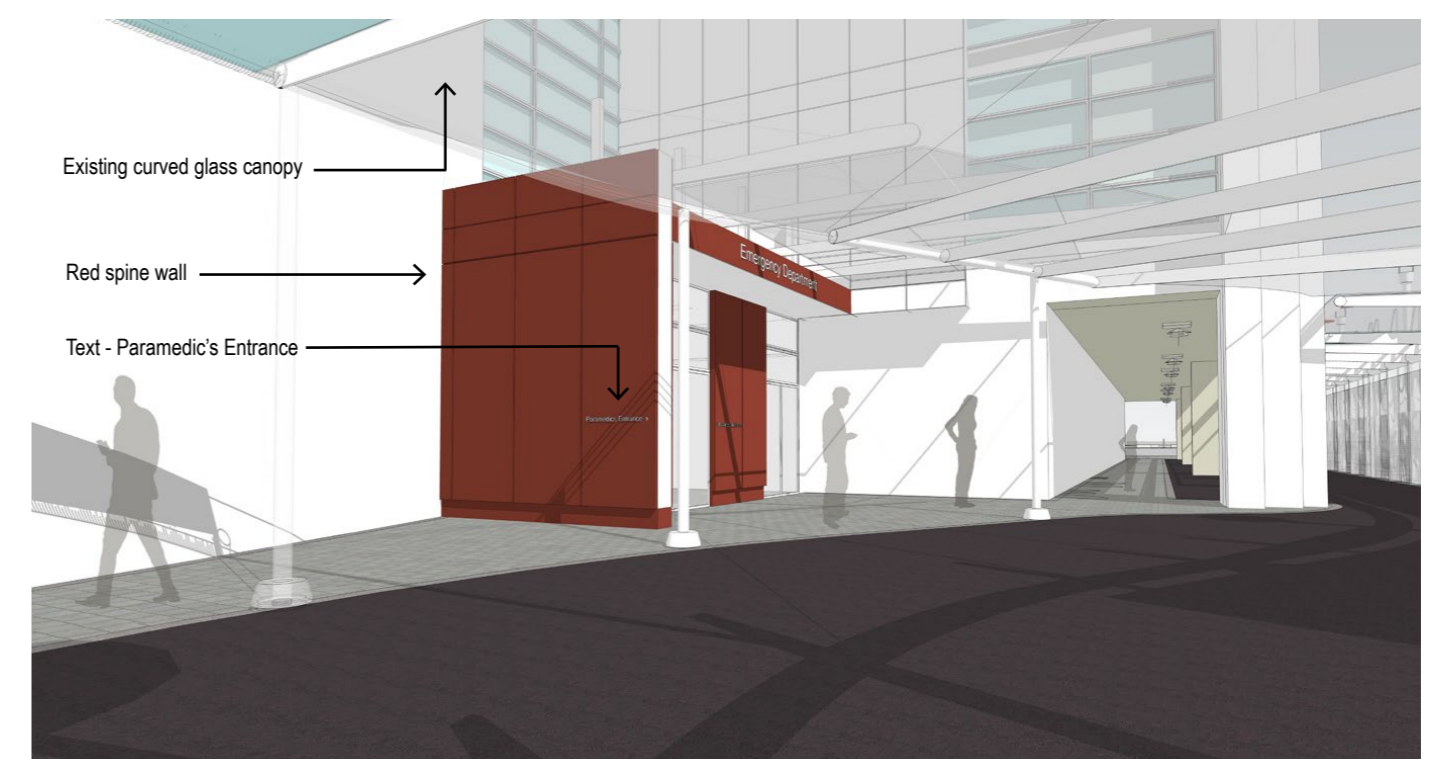
As built photographs showing the underside of the curved glass canopy panel next to existing building column



Aerial view indicating the overlapping between existing and proposed canopies



View 1 indicating red spine wall, glazed canopy and signage



View 2 indicating spine wall, proposed and existing glazed canopies

Architects
Engineers
Masterplanners
Project Managers

International Office Network

Belgium	Saudi Arabia
China	Singapore
Czech Republic	Slovakia
India	Turkey
Ireland	UK
Poland	USA
Russia	

200 Upper Richmond Road
London SW15 2SH
T +44 20 8780 1800
F +44 20 8780 2646
E info@pmdevereux.com
W www.pmdevereux.com