

All dimensions shown are in millimetres unless stated otherwise. DO NOT SCALE FROM THIS DRAWING

CIVIL / STRUCTURAL DESIGN RISK MANAGEMENT
 Abnormal or unusual residual risks associated with the design outcomes shown on this drawing are:-
 RSK LDE LTD has followed its Design Risk Management process for Hazard Elimination and Risk reduction in developing the designs shown on this drawing.
 Abnormal or unusual residual risks may be shown above where it is considered that such risk may not normally be expected by competent persons engaged on work of this nature or type.

PRELIM CONDOC

This drawing and any related notes are protected by copyright. To the extent that this is a design document it is, in addition, protected by design right. All rights in them are reserved. They are provided for your information only. No part of them or any design to which they relate may be reproduced in any form or by any means without the prior written permission of Fairview New Homes Limited, except as expressly permitted by law. The doing of any unauthorized act in relation to them may result in both a civil claim and criminal prosecution.

- NOTES:
- This drawing is to be read in conjunction with all relevant Architect, Landscape and Engineering drawings.
 - All levels quoted are in metres A.O.D.
 - This drawing to be read in conjunction with FNH413/28.2 external construction details.
 - For full details regarding railings and wall features see drawings FNH413/35-800 and FNH413/35-801 (latest rev)

Surface Finishes Legend:

- New Private Footpath Construction (Tegular paving with p.c.c. edgings)
- Private Paving Construction (Terraces, etc.)
- New parking bay construction (Full depth specification)
- New tarmac footpath construction (Full depth spec)
- New parking bay construction tie-in to existing tarmac construction
- Existing tarmac to be planed off and/or regulated as necessary using material in accordance with SWH Clause 907. New 30mm AC10 close surfaced material 100/150 to be laid to BS EN 1308-1 throughout. Where ever possible final levels are to match existing levels and to suit existing drainage outfalls.
- Soft Landscaping (see landscape drawing for details)
- HB2 Kerb (125mm upstand)
- BN Kerb (25mm upstand)
- Edging Kerb (Flush)
- DK PC Transition (Dropped) Kerb
- Low level brick wall (0.45m) with 0.65m high railings on top
- Low level brick wall (0.45m) with 1.35m railings on top
- Low level brick wall (0.45m) with boundary hedge behind and metal gates to entrances
- 1.8m high railings
- 1.8m high railings to replace existing where not present

5	Landscape plan attached	PJW	21.07.15
4	To suit comments received from FNH Ltd.	PJW	16.07.15
3	Red line boundary revised	PJW	26.06.15
2	Boundary treatments added and Tegula paving to communal paths. Released for Prelim Condoc.	PJW	18.06.15
1	RELEASED FOR QA ISSUE	PJW	03.06.15
P1	Garrett House works added	PJW	27.05.15
REV	AMENDMENTS	BY	DATE



18 Frogmore Road
 Hemel Hempstead
 Hertfordshire
 HP3 9RT
 United Kingdom

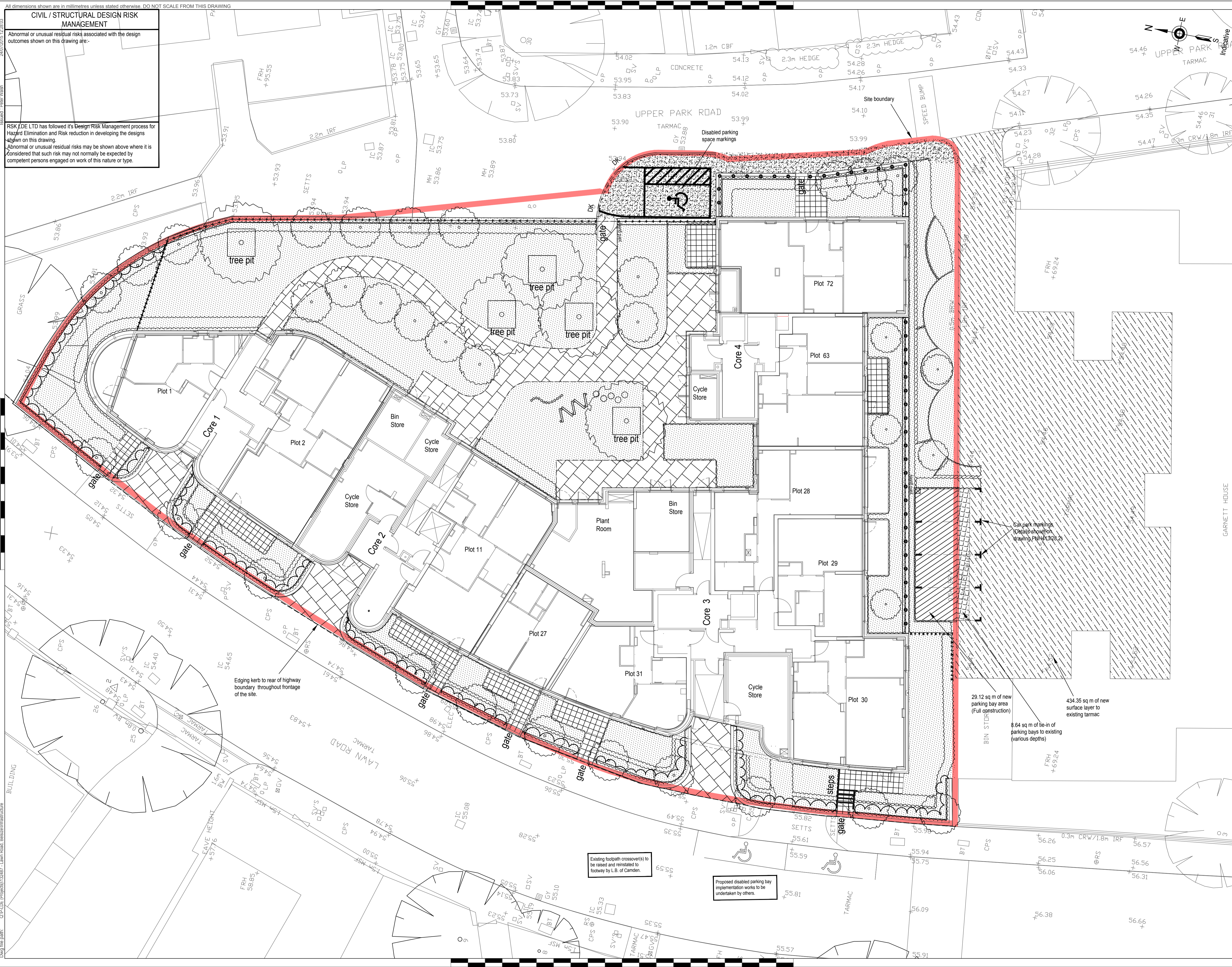
Tel: +44 (0) 1442 437500
 Fax: +44 (0) 1442 437550
 Email: info@rsk.co.uk
 Web: www.rsk.co.uk

For and on behalf of:
Fairview NEW HOMES Ltd.
 Technical Department,
 50 Lancaster Road, Enfield,
 Middlesex EN2 0BY
 Tel: 020-8366-1271
 Fax: 020-8342-3881
 E-mail: technical@fnhhd.co.uk

Drawn:	PJW	Date:	28.04.15	Scale:	1:125
Checked:	TH	Approved:	AT	Infrastructure	

EXTERNAL FINISHES LAYOUT

Project:	LAWN ROAD, BELSIZE PARK
Drawing Number:	FNH413/28.1
Rev:	5
Dwg:	FNH 413-28.1 External Finishes Layout.dwg
	A1



Dwg file path: C:\P\DE (Project)\132487 - Lawn Road, Belsize\Infrastructure

Issued: Peter Walsh

RSK LDE LTD has followed its Design Risk Management process for Hazard Elimination and Risk reduction in developing the designs shown on this drawing.
 Abnormal or unusual residual risks may be shown above where it is considered that such risk may not normally be expected by competent persons engaged on work of this nature or type.