

NEW FLOOR STRUCTURE
 FORMED OF STEEL
 BEAMS AND TIMBER
 JOISTS. 300mm STRUCTURAL
 DEPTH

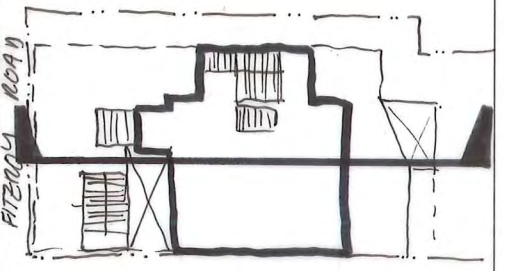
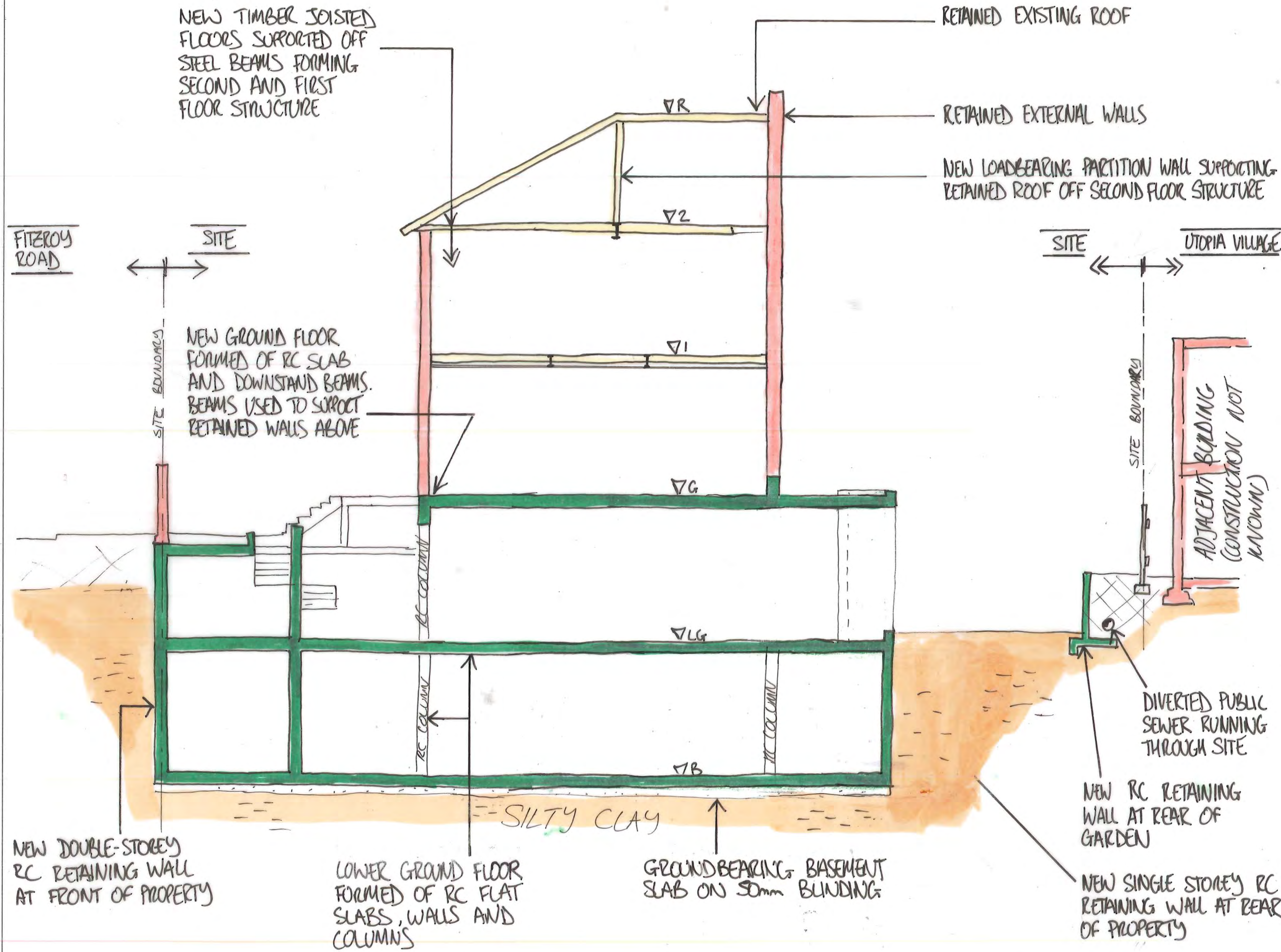
LOADBEARING TIMBER STUD
 WALL TO SUPPORT RETAINED
 ROOF STRUCTURE ABOVE

EW MARKUP 10.06.2016

2150568 WGr

SECOND FLOOR PLAN 1:100 @ A3

This drawing is to be read in conjunction with all relevant architects, engineers and specialists drawings and specifications.
Do not scale from this drawing.



KEY PLAN

rev	date	by	chk	description
P2	26.6.16	WGr	MB	PRELIMINARY-IG COLMAN, REAR BREAST
P1	26.6.16	WGr	MB	PRELIMINARY

elliottwood

Elliott Wood Partnership LLP, 46-48 Foley Street, London W1W 7TY
Consulting Structural and Civil Engineers. www.elliottwood.co.uk
tel: (020) 7499 5888 fax: (020) 7499 5444 info@elliottwood.co.uk

job title
1 FITZROY ROAD

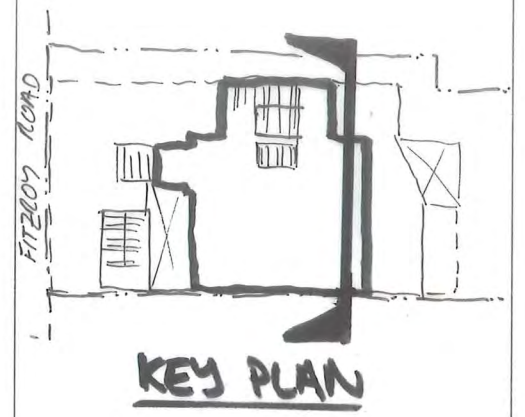
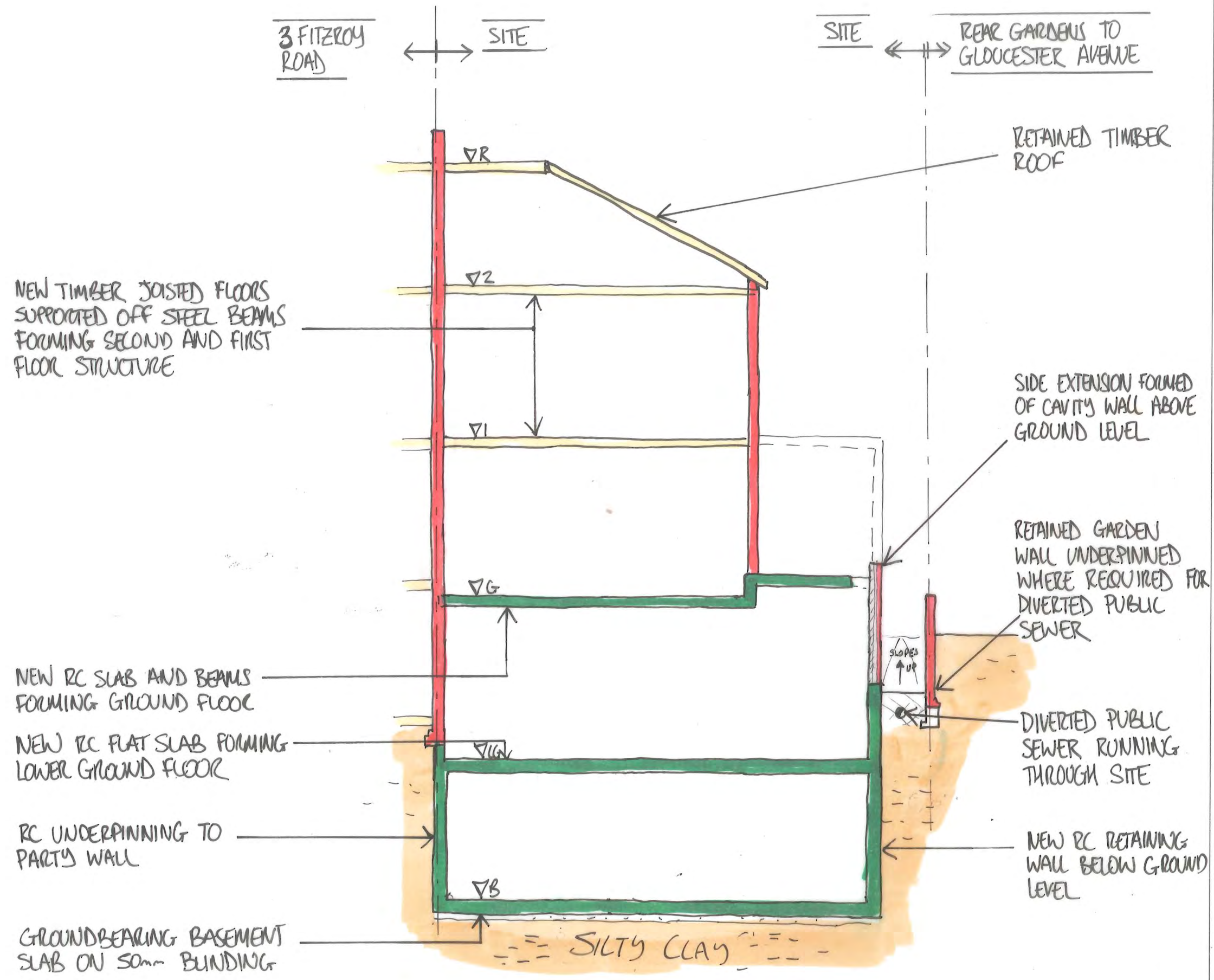
drawing title
SECTION A-A

scale(s) 1:100 date APR'16 drawn WGr

drawing status
PRELIMINARY

job no	drawing no	revision
2150568	S.08	P1

This drawing is to be read in conjunction with all relevant architects, engineers and specialists drawings and specifications.
Do not scale from this drawing.



PI	28.4.16	WGR	MB	PRELIMINARY
rev	date	by	chk	description

elliottwood

Elliott Wood Partnership LLP, 46-48 Foley Street, London W1W 7TY
Consulting Structural and Civil Engineers. www.elliottwood.co.uk
tel: (020) 7499 5888 fax: (020) 7499 5444 info@elliottwood.co.uk

job title
1 FITZROY ROAD

drawing title
SECTION B-B

scale(s) date drawn
1:100 APR '16 WGR

drawing status
PRELIMINARY

job no	drawing no	revision
2150568	S.09	PI

Appendix 3 - Drainage strategy drawings

This drawing is to be read in conjunction with all relevant architects, engineers and specialists drawings and specifications.

Do not scale from this drawing.

LEGEND

- EXISTING/PROPOSED COMBINED MANHOLE
- EXISTING COMBINED WATER SEWER/RAIN
- PROPOSED COMBINED WATER SEWER/RAIN
- - - - - COMBINED WATER SEWER/RAIN TO BE REMOVED/CAPPED
- - - - - SITE BOUNDARY
- - - - - EXTENT OF BASEMENT
- CORRIDOR FOR DIVERSION

DRAINAGE NOTES

1. THE LOCATION AND LEVEL OF EXISTING DRAINAGE CONNECTIONS AND EXISTING SERVICES IS TO BE CHECKED PRIOR TO COMMENCEMENT OF DRAINAGE WORKS. ANY VARIANCE TO THE DETAILS ON THIS DRAWING AND THE SCHEDULE IS TO BE BROUGHT TO THE ATTENTION OF THE ENGINEER.
2. THE DESIGN IS BASED ON THE INFORMATION AVAILABLE ON THE DATE OF ISSUE FROM OTHER PARTIES (EG. ARCHITECT AND M & E ENGINEER). IT IS SUBJECT TO CHANGE RESULTING FROM UPDATES TO THE AVAILABLE INFORMATION FROM OTHERS.
3. THE DRAWINGS ARE TO BE READ IN CONJUNCTION WITH THE NBS SPECIFICATIONS, ASSOCIATED MANHOLE SCHEDULE AND STANDARD DRAINAGE DETAIL DRAWINGS WHERE APPLICABLE.
4. THE POSITIONS OF FOUL AND SURFACE WATER DRAINAGE POINTS ARE INDICATIVE ONLY. REFER TO THE ARCHITECTS DRAWINGS FOR SETTING OUT DETAILS.
5. PRIVATE FOUL AND SURFACE WATER DRAINAGE IS TO BE CONSTRUCTED IN ACCORDANCE WITH BUILDING REGULATIONS PART H, BS EN752 AND BS EN12056.
6. ALL SOIL CONNECTIONS UNDER BUILDINGS TO BE 100mm DIA LAID AT A MINIMUM GRADIENT OF 1:40 UNLESS NOTED OTHERWISE.
7. ALL SURFACE WATER CONNECTIONS TO BE 150mm DIAMETER AND TO BE LAID AT A MINIMUM GRADIENT OF 1:80 UNLESS NOTED OTHERWISE.
8. ALL SOIL CONNECTIONS AND RAINWATER PIPES SHOULD BE RODDABLE FROM GROUND LEVEL.
9. RAINWATER DOWN PIPES ARE TO CONNECT TO A DRAIN VIA A REST BEND. WHERE DRAINAGE IS COMBINED A 'P' TRAP MUST ALSO BE PROVIDED.
10. IN CASES OF IN SITU CONCRETE FLOOR SLABS, DRAINS ARE TO BE CAST INTEGRAL WITH THE SLAB WHERE PIPE COVER TO THE CROWN IS LESS THAN 300mm. - NOTE SPECIAL PROVISIONS APPLY TO BASEMENT FLOOR SLABS - SEE DETAILED DRAINAGE AND STRUCTURAL DRAWINGS. CONCRETE ENCASMENT TO BE REINFORCED AS PER DRAINAGE DETAIL.
11. IN CASES OF SUSPENDED FLOORS WHERE A VOID OF 300mm OR MORE EXISTS BELOW FLOOR DRAINS ARE TO BE SUSPENDED USING A PROPRIETARY HANGER SYSTEM OR CAST INTEGRAL WITH THE FLOOR.
12. WHERE DRAINS PASS THROUGH FOUNDATIONS OR OTHER RIGID STRUCTURES A LINTEL OR SLEEVE IS TO BE USED AND PROVISION FOR FLEXIBILITY IS TO BE MADE USING ROCKER PIPES.
13. BACKFILLING OF DRAIN TRENCHES ADJACENT TO BUILDING OR OTHER STRUCTURES IS TO BE IN ACCORDANCE WITH DIAGRAM 8 OF THE BUILDING REGULATIONS.
14. ANY PIPE OR GULLY OR OTHER FITTING OR DUCT PENETRATING THE BASEMENT SLAB OR WALL IS TO BE WATERPROOFED USING HYDROPHILIC STRIPS OR PUDDLE FLANGES TO ENSURE A WATER TIGHT JOINT. CONCRETE SURROUND TO DRAINAGE PIPES AND FITTINGS MAY BE REQUIRED IN CERTAIN CASES - REFER TO DETAILED DRAINAGE DRAWINGS AND RELEVANT STRUCTURAL DETAILS.
15. EXISTING FOUNDATIONS AND RETAINING WALLS MUST NOT BE UNDERMINED BY NEW DRAINAGE RUNS UNLESS AGREED IN WRITING WITH THE STRUCTURAL ENGINEER. CONTRACTOR TO SUBMIT METHOD STATEMENTS AND TEMPORARY WORKS PROPOSALS TO THE STRUCTURAL ENGINEER FOR COMMENT PRIOR TO COMMENCEMENT OF WORKS.
16. MANHOLES DRAWN TAKING INTO ACCOUNT CONCRETE SURROUND.
17. ALL MANHOLES IN ACCORDANCE WITH SEWERS FOR ADOPTION 7TH EDITION.
18. ALL SEWERS CONSTRUCTED OF VITRIFIED CLAY TO BS EN 295-1.
19. WIDTH OF SPACE BETWEEN EDGE OF BASEMENT AND BOUNDARY WALL 1m MINIMUM TO ACCOMMODATE MANHOLES AND SURROUND.
20. SEE DRAWINGS S06 AND S07 FOR SECTIONS A TO D



NOT FOR CONSTRUCTION

rev	date	by	chk	description
P6	10.06.16	CSc	PCh	Design to SFA7
P5	11.05.16	CSc	PCh	CAD issue
P4	05.05.16	CSc	PCh	Brick chambers for diversion
P3	18.04.16	CSc	PCh	Updated ILS and gradients
P2	23.03.16	CSc	PCh	New architect layout
P1	15.02.16	CSc	PCh	Preliminary issue

elliottwood

Elliott Wood Partnership LLP, 241 The Broadway, London SW19 1SD
 Consulting Structural and Civil Engineers. www.elliottwood.co.uk
 tel: 020 8544 0033. fax: 020 8544 0066. info@elliottwood.co.uk

project
 1 Fitzroy Road
 London, NW1 8TU

drawing title
 Proposed Below-Ground
 Drainage Strategy
 General Arrangement

scale (s)	date	drawn
1:50@A1, 1:100@A3	February 2016	CSc

project no.	drawing status.				
2150568	Preliminary				
originator.	zone.	level.	role.	dtg no.	revision
EW	00	L00	D	5000	P6

This drawing is to be read in conjunction with all relevant architects, engineers and specialists drawings and specifications.

Do not scale from this drawing.

MANHOLE & PIPELINE SCHEDULE																	
U/S Manhole	MH Details	Depth	MH Size	Type	Eastings	Northings	Pipe Out Ref.	Pipe Out IL	Pipe Out Dia.	Pipe Out Slope	D/S Manhole	Pipes In Ref.	Pipes In IL	Pipes In Dia.	Clear Opening	Cover Grade	Comments
CW MH-01	CL = 30.650 IL = 30.050	0.600	450Ø	PPIC	528167.100	184045.507	1.001	30.050	150mm	1:45	CW MH-02	TW 1.000	30.050	100mm	450x450	B125	Designed in accordance with Sewers for Adoption 7th Edition
CW MH-02	CL = 30.615 IL = 29.880	0.735	450Ø	PPIC	528171.296	184051.879	1.002	29.880	150mm	1:35	CW MH-03	1.001 TW 2.000	29.880 29.880	150mm 150mm	450x450	B125	Designed in accordance with Sewers for Adoption 7th Edition
CW MH-03	CL = 30.650 IL = 29.740	0.910	450Ø	PPIC	528166.710	184055.074	1.003	29.730	150mm	1:40	CW MH-04	1.002	29.730	150mm	450x450	B125	Designed in accordance with Sewers for Adoption 7th Edition
CW MH-04	CL = 30.900 IL = 29.660	1.240	450Ø	PPIC	528166.138	184057.809	1.004	29.660	150mm	1:45	CW MH-05	1.003	29.660	150mm	450x450	B125	Designed in accordance with Sewers for Adoption 7th Edition.
CW MH-05	CL = 32.340 IL = 29.355	2.985	450Ø	PPIC	528154.744	184065.205	1.005	29.360	150mm	1:42		1.004	29.360	150mm	300x300	D400	Demarcation chamber. Reduced access telescopic PPIC. Designed in accordance with Sewers for Adoption 7th Edition.

NOT FOR CONSTRUCTION

P3	10.06.16	CSc	PCh	CAD issue
P2	05.05.16	CSc	CDa	Change of chamber construction
P1	19.04.16	CSc	CDa	Preliminary issue
rev	date	by	chk	description

elliottwood

Elliott Wood Partnership LLP, 241 The Broadway, London SW19 1SD
Consulting Structural and Civil Engineers. www.elliottwood.co.uk
tel: 020 8544 0033. fax: 020 8544 0066. info@elliottwood.co.uk

project

1 Fitzroy Road
London, NW1 8TU

drawing title

Drainage Diversion
Proposed Manhole Schedule

scale (s)	date	drawn
N/A	April 2016	CSc

project no.				drawing status.			
2150568				Preliminary			
originator.	zone.	level.	role.	drg no.	revision		
EW	00	L00	D	5100	P3		

Wimbledon

241 The Broadway
London
SW19 1SD

tel. (020) 8544 0033
fax. (020) 8544 0066

Central London

46-48 Foley Street
London
W1W 7TY

tel. (020) 7499 5888
fax. (020) 7499 5444

Nottingham

1 Sampson's Yard
Halifax Place
Nottingham
NG1 1QN

tel. 0870 460 0061
fax. 0870 460 0062

email: info@elliottwood.co.uk
www.elliottwood.co.uk

elliott wood partnership ltd
structural and civil engineers



INVESTOR IN PEOPLE