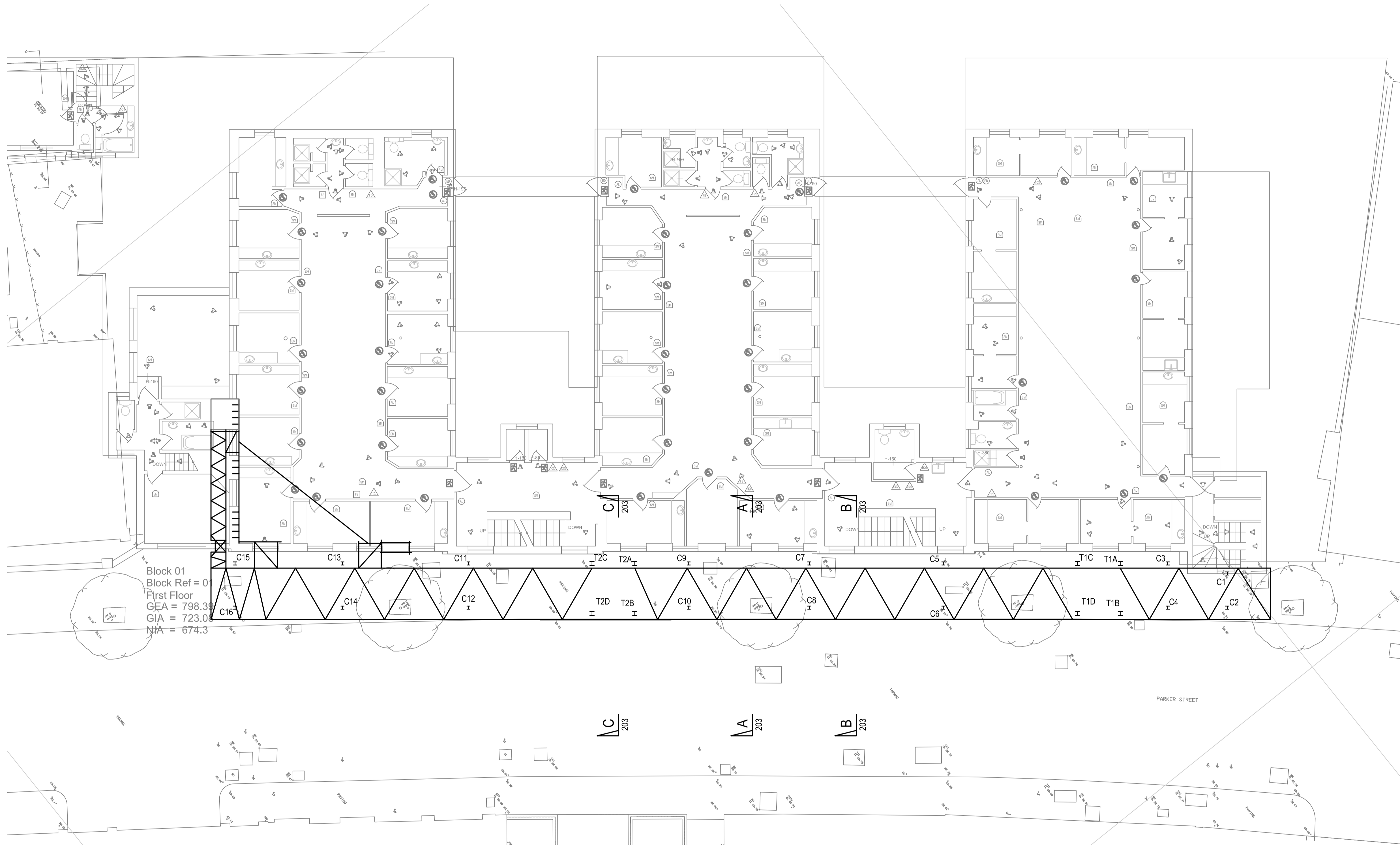


NOTES

- 1) RISK ASSESSMENT
 - a) It is assumed that these works are to be carried out by a competent contractor
- 2) For general notes see drawing 100
- 3) This drawing is based upon the Engineers/Survey/Architects drawing reference.....Rev.....dated.....



Block 01
 Block Ref = 01
 First Floor
 GEA = 798.35
 GIA = 723.00
 N/A = 674.3

Rev	Date	Description	By	Check	App
-	13/05/16	First Issue	KX	KX	SM



Consulting Engineers
 St. Andrew's House, Esher, Surrey, KT10 9TA
 Telephone 020 7643 1050 Web: www.wentworth-house.co.uk
 Email director@wentworth-house.co.uk

Job Title
Parker Street

Client
Keltbray

Contractor
Keltbray

Drawing Title
**Facade Retention System
 Typical Truss Level Layout**

Drawing Status		PRELIMINARY	
Job No.	Scale at A1	Date	
2110	1:100@A1	May.2016	
Web.no.	Drg.no.	Rev.	
	202	-	