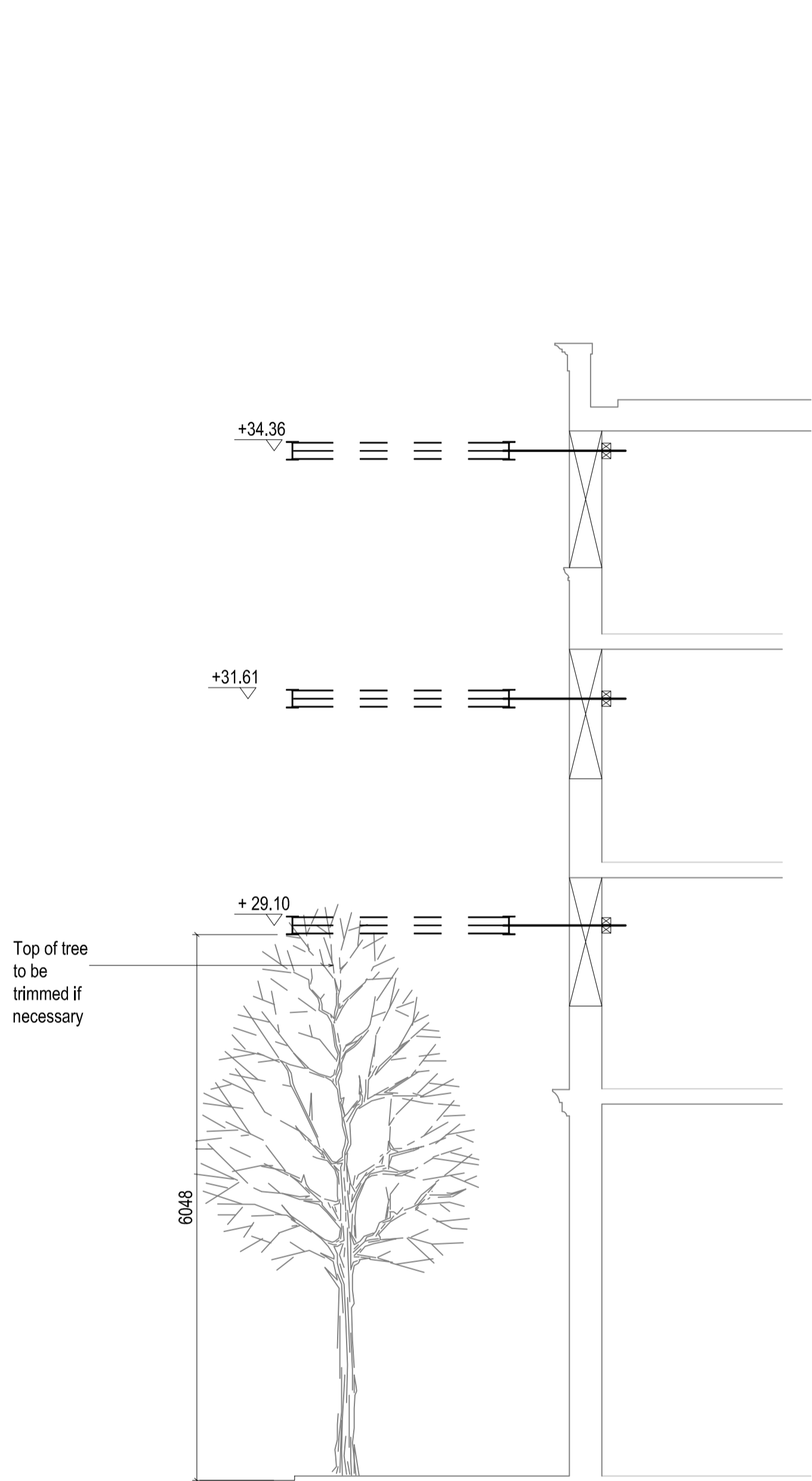
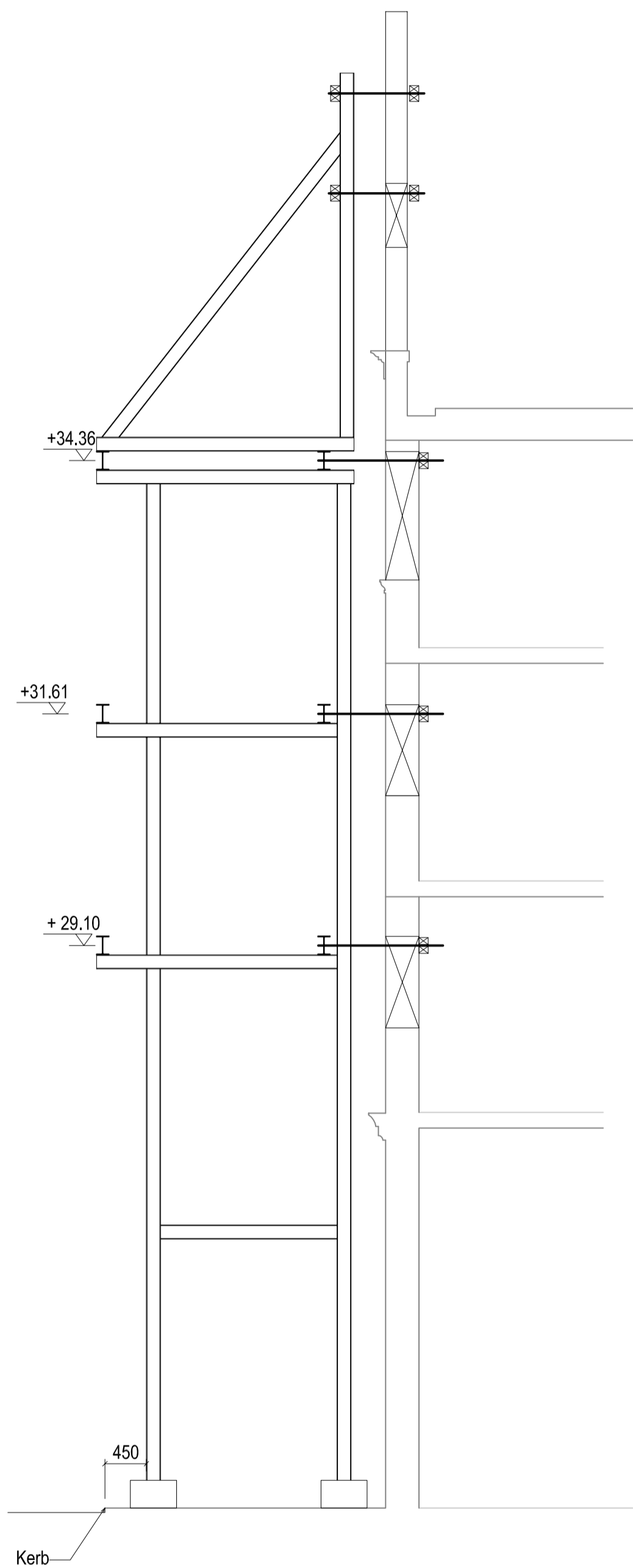


NOTES

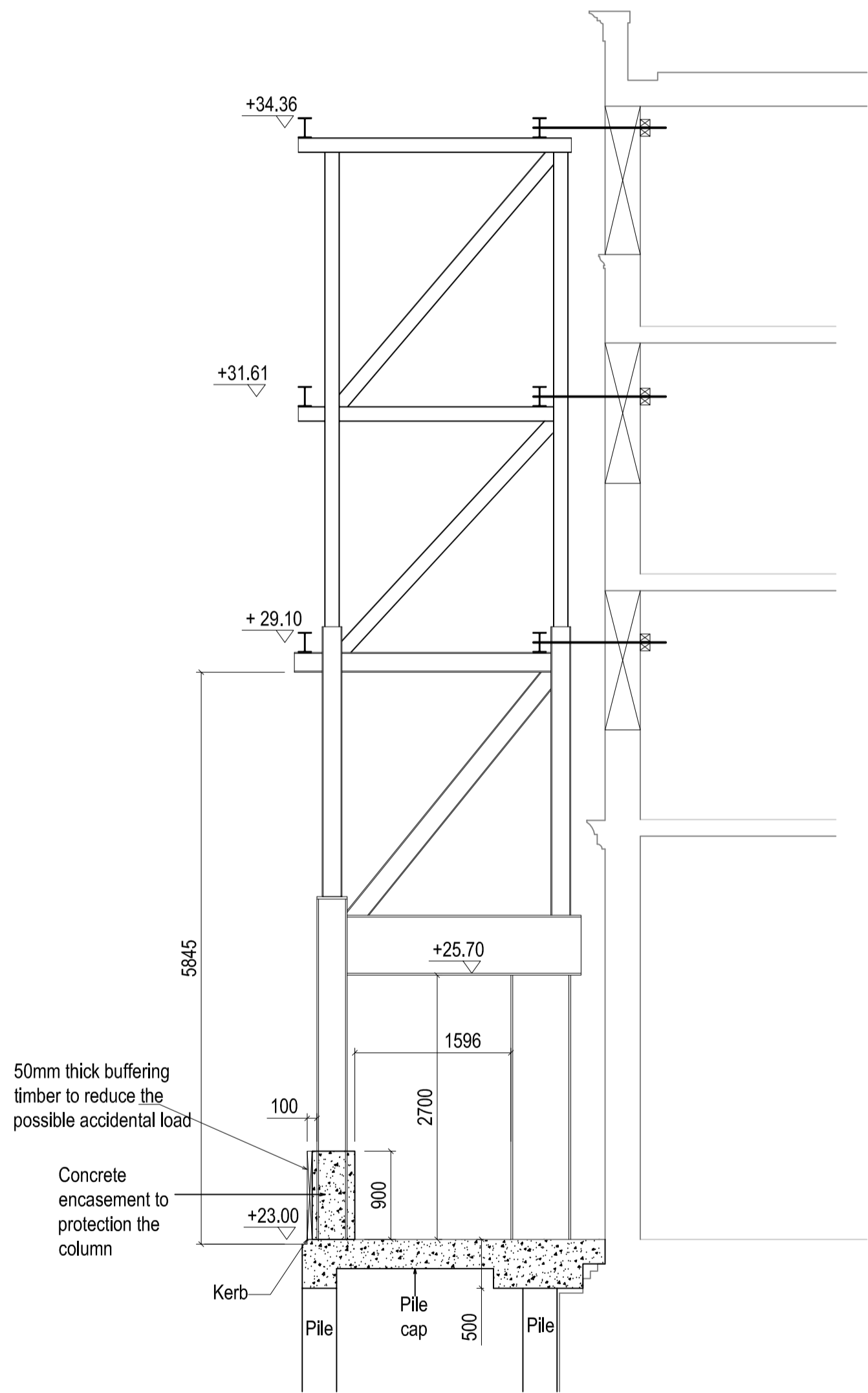
- 1) RISK ASSESSMENT
a) It is assumed that these works are to be carried out by a competent contractor
- 2) For general notes see drawing 100
- 3) This drawing is based upon the Engineers/Survey/Architects drawing reference.....Rev.....dated.....



SECTION A-A



SECTION B-B



SECTION C-C

-	13/05/16	First Issue	KX	KX	SM
Rev	Date		Dm	Dsn	App

Wentworth House
Partnership
Consulting Engineers
St. Andrew's House, Esher, Surrey, KT10 9TA
Telephone 020 7643 1050 Web: www.wentworth-house.co.uk
Email director@wentworth-house.co.uk

Job Title
Parker Street

Client
Keltbray

Contractor
Keltbray

Drawing Title
Facade Retention System
Street level Layout

Drawing Status	PRELIMINARY	
Job No.	Scale at A1	Date
2110	1:50@A1	May.2016
Web.no.	Drg.no.	Rev.
	203	-