

NOTES

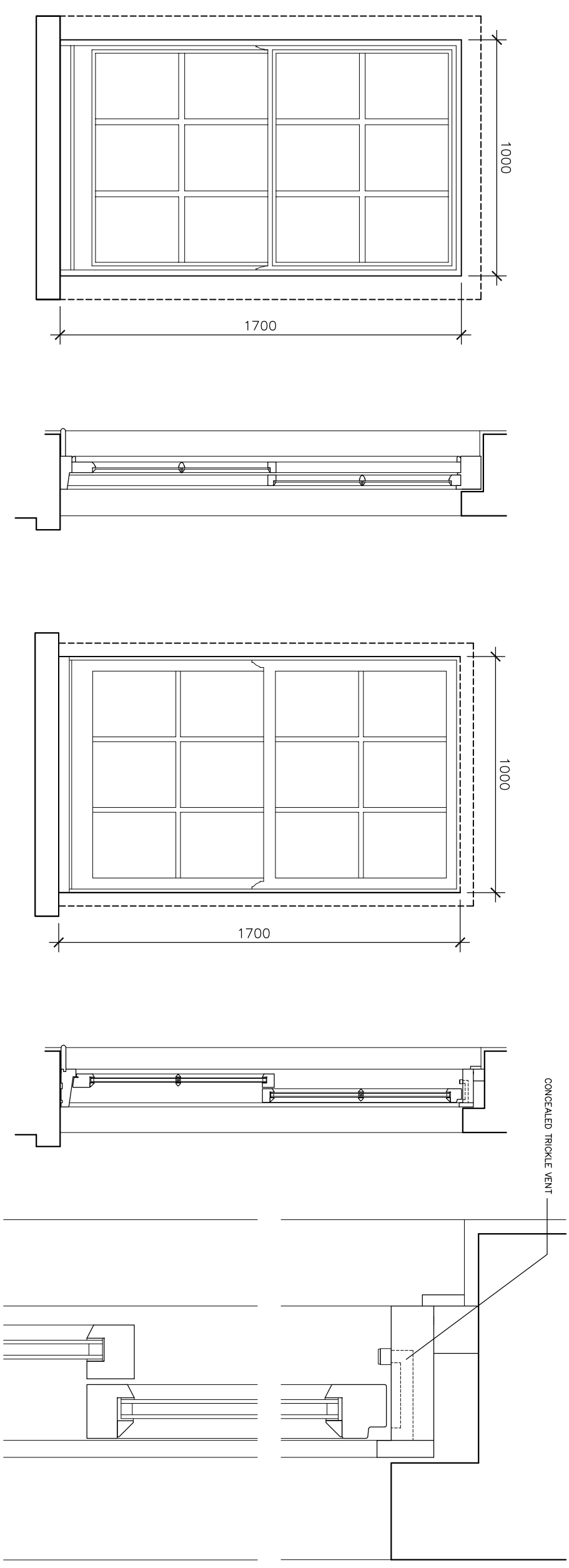
Proposed replacement windows: double-glazed timber windows with vertical sliding sashes, painted, colour: White.

Windows to have inward tilt facility for cleaning; concealed trickle vents + putty style glazing beads.

All windows manufactured to suit existing opening sizes. Section sizes to replicate existing where practically possible, with bonded glazing bars applied to match existing glazing bar locations.

Elevations from outside.

Dimensions are brick opening sizes, measured externally. No access to upper floor windows - sizes estimated - accurate to + or - 50mm. Dimensions to be taken on site before pricing + construction.



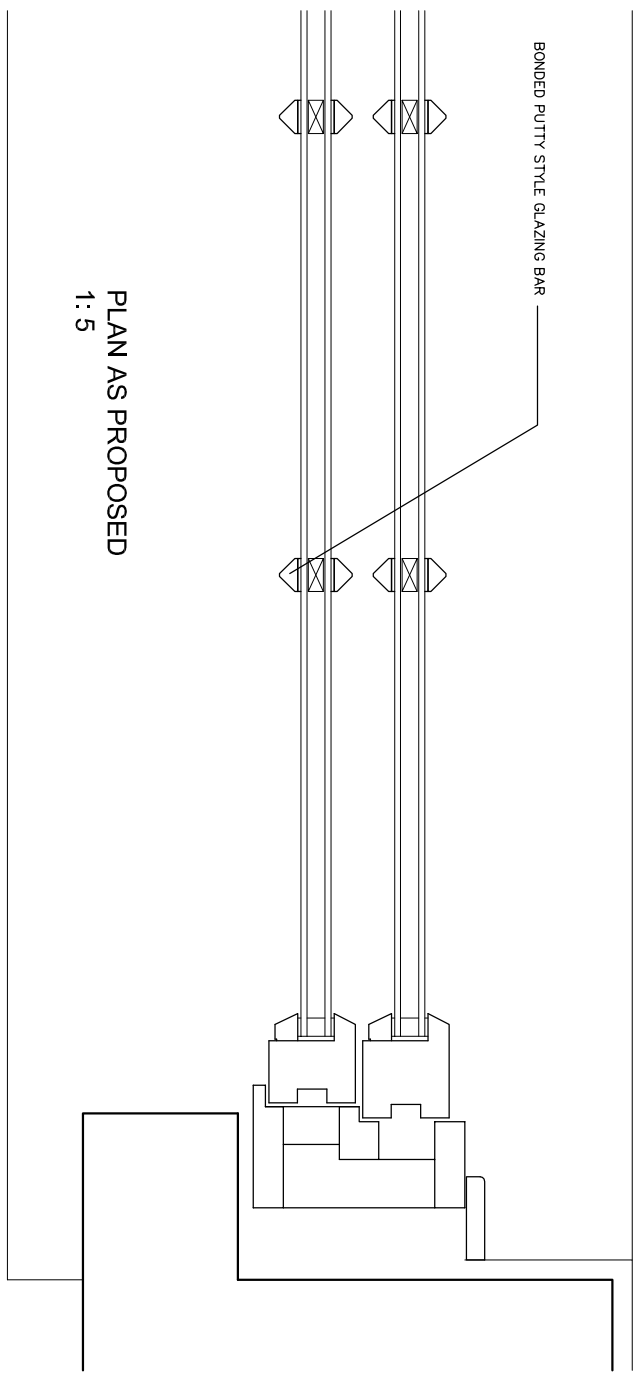
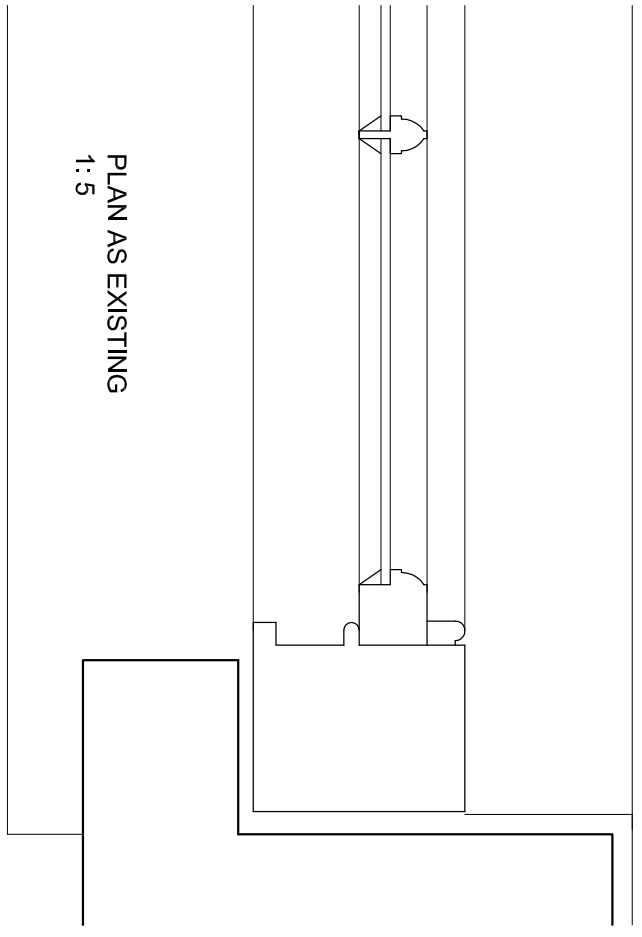
CONCEALED TRICKLE VENT

SASH WINDOW AS EXISTING

SASH WINDOW AS PROPOSED

SECTION AS PROPOSED 1:5

A



Do not scale this drawing. All dimensions to be checked by the Contractor before construction proceeds. © Randall Shaw Billingham

RANDALL SHAW BILLINGHAM
Architects Energy Consultants Planners
54 Harcombe Road London N16 0SA
e-mail: rsh@randallshaw.co.uk
tel: 020 7254 7472

JOB TITLE
LONDON BOROUGH OF CAMDEN
PLANNED MAINTENANCE
84 GLOUCESTER AVENUE

DWG TITLE
TYPICAL TIMBER VERTICAL
SLIDING SASH WINDOW
DETAILS

SCALE 1:5, 20 @ A3 DWG bs
DATE 6/16 **CHK** kr
DWG NO. 254/11 **REV.**