

Project Design and Calculation Results

The results have been calculated using following Standard and coefficient results from wind tunnel testing:

Date of Calculation: 20.06.2016

Name of Project: SUNFIX - 4192 - ns - Acland Burkley School

Revision: 1

Project Location: 93 Burghley Road, London NW5 1UJ

Roof Height: 9,00 m

Basic Wind Speed: 21,5 m/s

Peak Velocity Pressure: 0,57 kN/m² = 30 m/s = 109 km/h

Weight of Mounting System: 1237 kg

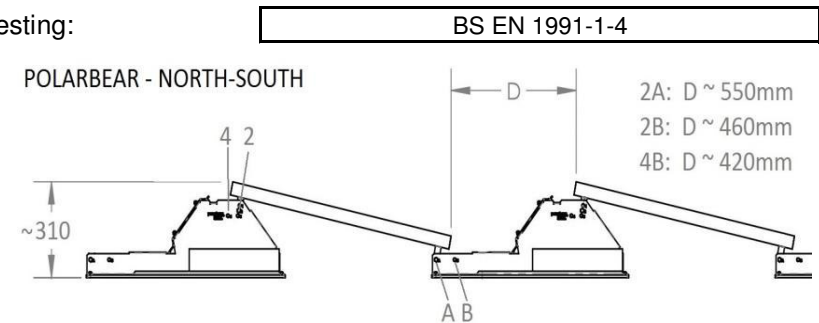
Weight of Modules: 1887 kg

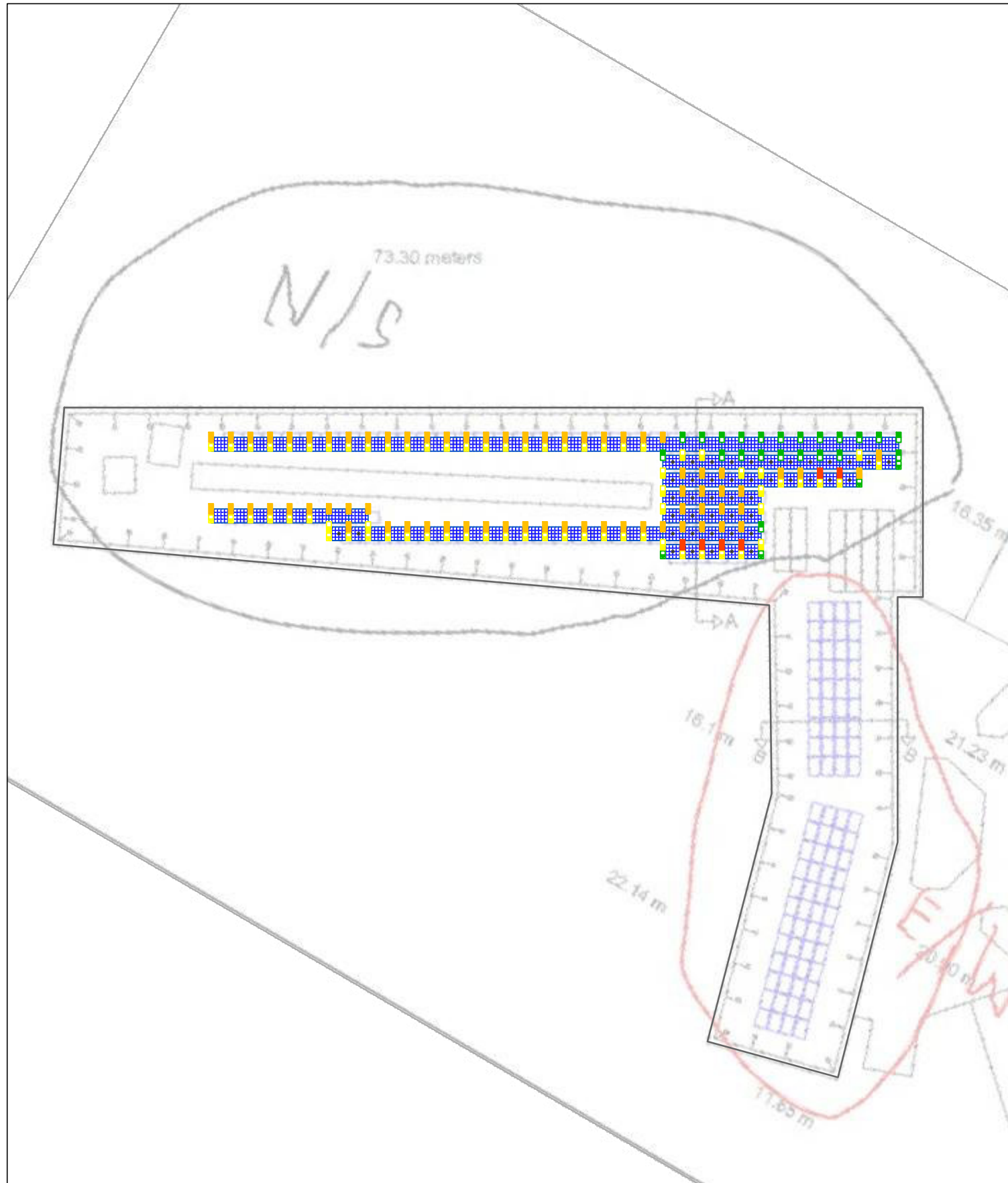
Weight of Ballast: 4704 kg

Total Weight: 7828 kg

Total Weight over the area of modules: 28 kg/m²

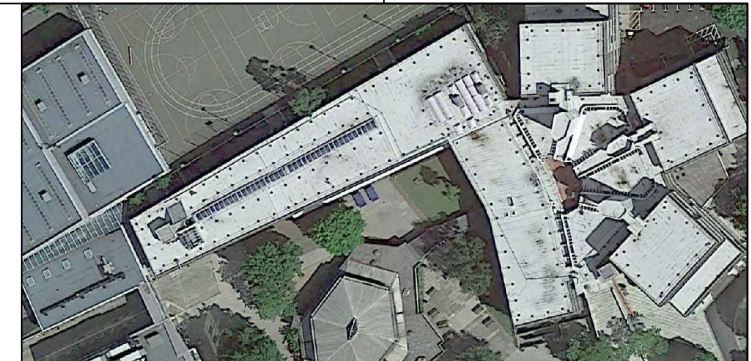
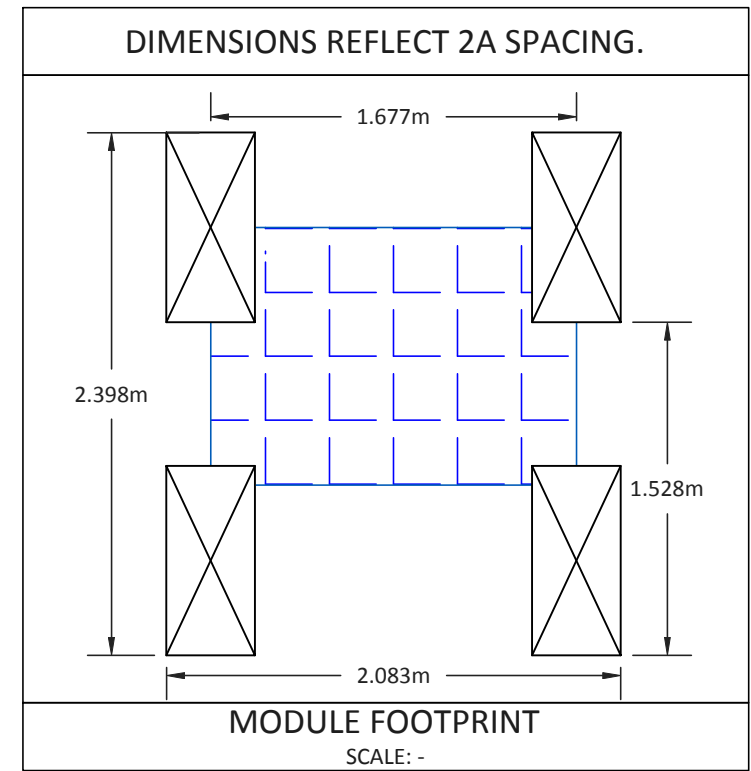
Systemload over complete roofsurface: 5,1 kg/m²





ARRAY SITE MAP
SCALE: -

- GENERAL NOTES:
1. ALL SITE, PROJECT, AND BUILDING DETAILS ARE PROVIDED BY CUSTOMER OR GENERATED VIA SATELLITE IMAGERY FROM INFORMATION PROVIDED BY CUSTOMER. PANELCLAW IS NOT RESPONSIBLE FOR SITE INACCURACIES THAT COULD LEAD TO CHANGES TO THESE DRAWING DETAILS AND ARRAY LAYOUT CONFIGURATIONS. ALL INFORMATION CONTAINED WITHIN THESE DOCUMENTS ARE TO BE FIELD VERIFIED BY CUSTOMER AND INSTALLER. ANY CHANGES OR MODIFICATIONS TO THESE DOCUMENTS, CONTAINED INFORMATION, OR FINAL ARRAY AND MOUNTING SYSTEM INSTALLATIONS MUST BE SUBMITTED TO PANELCLAW AND OTHER PROJECT AUTHORITIES FOR APPROVAL.
 2. REFER TO AND FOLLOW THE APPROPRIATE PANELCLAW INSTALLATION MANUALS AND PROCEDURES DURING THE INSTALLATION PROCESS. NOT FOLLOWING SUCH PROCEDURES AND METHODS COULD RESULT IN DAMAGE TO THE COMPONENTS OR MAY VOID THE PRODUCT WARRANTY.
 3. REFER TO THE SPECIFIC ARRAY BALLAST SHEETS FOR BALLASTING REQUIREMENTS BASED ON THE PROVIDED SITE INFORMATION.
 4. THE MODULE FOOTPRINT DETAIL INCLUDES THE ASSEMBLY OF (1) MODULE MOUNTED TO (4) SUPPORTS AND (1) DEFLECTOR. DIMENSIONS REFLECT THE CRITICAL MEASUREMENTS OF A MODULE-MOUNTING SYSTEM ASSEMBLY. DIMENSIONS DO NOT REFLECT DIRECT MODULE LENGTH AND WIDTH.
 5. COEFFICIENT OF FRICTION ASSUMED TO BE 0,5 VERIFY ON ROOF
 6. NOT FOR CONSTRUCTION. FOR PLANNING PURPOSES ONLY. ALL DIMENSIONS HAS TO BE PROOVED BY CUSTOMER/ INSTALLER ON THE ROOF.



AERIAL PHOTO / SITE DIAGRAM

POLAR BEAR FR GEN II 10°

PROJECT DETAIL

WIND ZONE	21,5m/s
TERRAIN CATEGORY	III
SEISMIC ZONE	N/A
MODULE TYPE	Amerisolar AS-6P 30
MODULE DIMENSIONS (mm x mm)	992 x 1640
NUMBER OF MODULES	102
MODULE WATTAGE (W STC)	260
SYSTEM SIZE (KW STC)	26,52
SYSTEM WEIGHT (KG)	7828,26
SYSTEM AREA (SQ M.)	279,96
NUMBER OF ARRAYS	1
ARRAY TILT (DEG)	11,7
N-S SPACER STICK DIM. (mm)	897
E-W SPACER STICK DIM. (mm)	1677

PROJECT PART QUANTITIES

ITEM	PART NUMBER	QTY
CLAW	5010005	408
ASSY, CLAW-STANDARD, ALUMINUM		
POLAR BEAR SUPPORT	5010062	110
ASSY, SUPPORT, G90 ST, 304SS, POLAR BEAR GEN II 10 DEG-PAD		
SOUTH SUPPORT	5010136	59
ASSEMBLY, SUPPORT, LOW, G90ST, POLAR/GRIZZLY, PAD		
DEFLECTOR	201010804	58
DEFLECTOR, G90 ST, 1753MM, POLAR/GRIZZLY BEAR GEN II 10 DEG		
DEFLECTOR END PLATE	2000140	3
END PLATE, G90 STEEL, POLAR BEAR / GRIZZLY BEAR GEN II 10 DEG		
MECH. ATTACHMENT	N/A	0
N/A		
TOTAL STONES	3 kg	1568

150°

panelclaw

ESSENTIALS GMBH & CO KG
GRAFENBERGER ALLEE 190
D-40237 DÜSSELDORF
TEL: +49 211 930 70 400
FAX: +49 211 930 70 402
www.panelclaw.de

PROJECT: SUNFIX - 4192 - ns - Acland Burkley School
LOCATION: 93 Burghley Road, London NW5 1UJ

SCALE: - REV 1 SIZE A4 SHEET 1 OF 2

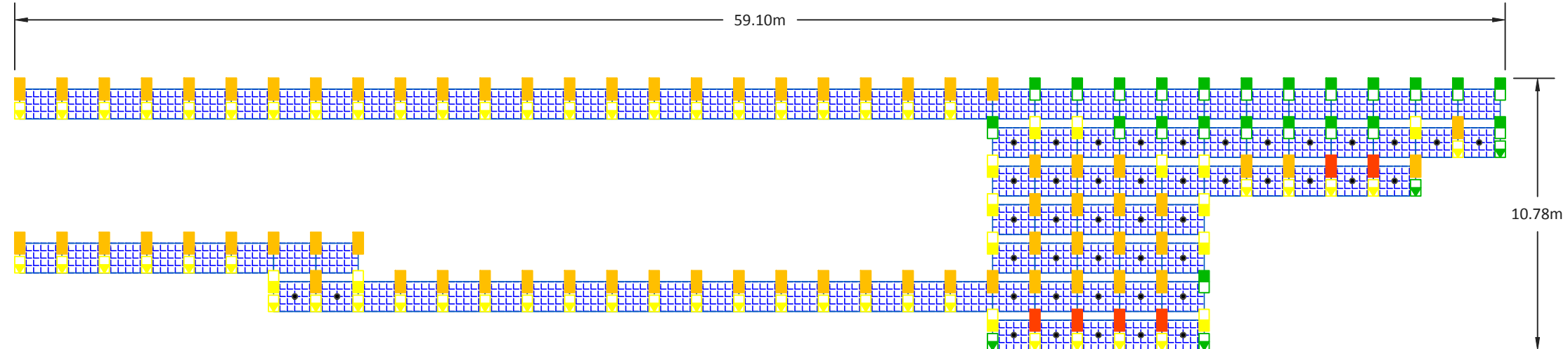
8 7 6 5 4 3 2 1

D

C

B

A



ARRAY 1	
ROOF INFORMATION	
WIND ZONE	21,5m/s
TERRAIN CATEGORY	III
ROOF HEIGHT (M)	9
ROOF TYPE	PVC
SEISMIC ZONE	N/A
ARRAY SPECIFICATIONS	
NUMBER OF MODULES	102
MODULE POWER (W)	260
ARRAY OUTPUT (Kw)	26,5
ARRAY PART QUANTITIES	
ITEM	QTY
CLAWS	408
DEFLECTORS	58
DEFLECTOR END PLATES	3
POLAR BEAR SUPPORTS	110
SOUTH SUPPORTS	59
MECH ATTACHMENTS	0
STONES	1568
ARRAY LOADING DETAILS	
SINGLE MODULE WT (KG)	18,5
SINGLE STONE WT (KG)	3
TOTAL ARRAY WT (KG)	7828,3
ARRAY AREA (SQ. M)	280,0
ARRAY LOAD (KG/SQ. M)	28,0

MODULE LEGEND	
MODULE WITH DEFLECTOR	MODULE WITHOUT DEFLECTOR

SUPPORT LEGEND					
0-STONE	4-STONE	8-STONE	12-STONE	16-STONE	M.A. WITH 4-STONE

SOUTH SUPPORTS				GRIZZLY	
0-STONE	4-STONE	8-STONE	M.A. WITH 4-STONE	GRIZZLY	M.A.

REV	DESCRIPTION	PREP	CHECK	DATE
1	BALLASTED LAYOUT	GB	GB	20.06.2016

150°

ESSENTIALS GMBH & CO KG
GRAFENBERGER ALLEE 190
D-40237 DÜSSELDORF
TEL: +49 211 930 70 400
FAX: +49 211 930 70 402
www.panelclaw.de

PROJECT: SUNFIX - 4192 - ns - Acland Burkley School
LOCATION: 93 Burghley Road, London NW5 1UJ

BALLAST LAYOUT - ARRAY 1

8 7 6 5 4 3 2 1

D

C

B

A