

General notes:  
This drawing is copyright of KSR architects. This drawing must be read in conjunction with the Designer's Risk Assessment, specification and all other relevant documentation and drawings. KSR architects accept no liability for any expense, loss or damage of whatsoever nature and however arising from any variation made to this drawing or in the execution of the work to which it relates which has not been referred to them and their approval obtained.  
Do not scale from this drawing or the digital data, only figured dimensions are to be used. For Planning refer to linear scale. Check all dimensions on site prior to carrying out any works - advise any discrepancy

Notes/Legends

Rev	Description	Date	Chd
0	KSR architects		
Stamp			

PLANNING

Key Plan



**KSRARCHITECTS**  
KSR Architects LLP  
14 Greenland Street  
London N16 5SD  
T: +44 (0)20 7692 5000  
www.ksrarchitects.com

Project:  
**GOLDHURST TERRACE**

Title:  
**Basement Floor GA Plan**

Date: 10/05/2016	Drawn By: DC	Checked: RS
Scale: 1:50 @ A1 / 1:100 @ A3	Status: Planning	Revision:
Project Ref: 15033	Drawing No: 15033-P090	





General notes:  
This drawing is copyright of KSR architects. This drawing must be read in conjunction with the Designer's Risk Assessment, specification and all other relevant documentation and drawings. KSR architects accept no liability for any expense, loss or damage of whatsoever nature and however arising from any variation made to this drawing or in the execution of the work to which it relates which has not been referred to them and their approval obtained.  
Do not scale from this drawing or the digital data, only figured dimensions are to be used. For Planning refer to linear scale. Check all dimensions on site prior to carrying out any works - advice any discrepancy

Notes/Legends

Rev	Description	Date	Chd
01	© KSR architects		
Stamp			

PLANNING

Key Plan



**KSRARCHITECTS**  
KSR Architects LLP  
14 Greenland Street  
London N16 9DQ  
T: +44 (0)20 7692 5000  
www.ksararchitects.com

Project:  
**GOLDHURST TERRACE**

Title:  
**Ground Floor GA Plan**

Date: 10/06/2016	Drawn By: DC	Checked: RS
Scale: 1/50 @ A1 / 1/100 @ A3	Status: Planning	
Project Ref: 15033	Drawing No: 15033-P100	Revision:





General notes:  
This drawing is copyright of KSR architects. This drawing must be read in conjunction with the Designer's Risk Assessment, specification and all other relevant documentation and drawings. KSR architects accept no liability for any expense, loss or damage of whatsoever nature and however arising from any variation made to this drawing or in the execution of the work to which it relates which has not been referred to them and their approval obtained.  
Do not scale from this drawing or the digital data, only figured dimensions are to be used. For Planning refer to linear scale. Check all dimensions on site prior to carrying out any works - advise any discrepancy.

Notes/Legends

Rev Description Date Drawn

© KSR architects

Project

PLANNING

Key Plan

N

**KSRARCHITECTS**

KSR Architects LLP  
14 Greenland Street  
London W1M 5ND

Project:

GOLDHURST TERRACE

Title:

First Floor GA Plan

Date: 12/05/2018

Drawn By: DC

Checked: RC

Scale: 1:100 (B4) / 1:150 (B4.5)

Status: Planning

Project Ref: 15033

Drawing No: 15033-P110

Revised:





General notes:  
This drawing is copyright of KSR architects. This drawing must be read in conjunction with the Designer's Risk Assessment, specification and all other relevant documentation and drawings. KSR architects accept no liability for any expense, loss or damage of whatsoever nature and however arising from any variation made to this drawing or in the execution of the work to which it relates which has not been referred to them and their approval obtained.  
Do not scale from this drawing or the digital data, only figured dimensions are to be used. For Planning refer to linear scale. Check all dimensions on site prior to carrying out any works - advise any discrepancy.

Notes/Legends

Rev	Description	Date	Drawn
01	© KSR architects		

PLANNING



**KSRARCHITECTS**  
KSR Architects LLP  
14 Gower Street  
London WC1E 6BT  
Email: info@ksrarchitects.com  
Tel: +44 (0)20 7692 5000  
Website: www.ksrarchitects.com

Project:  
**GOLDHURST TERRACE**

Title:  
**Second Floor GA Plan**

Date:	12/06/2018	Drawn By:	DC	Checked:	WS
Scale:	1:200 @ 1/100 @ A3	Status:	Planning	Revision:	
Project Ref:	15033	Drawing No:	15033-P120		





General notes:  
This drawing is copyright of KSR architects. This drawing must be read in conjunction with the Designer's Risk Assessment, specification and all other relevant documentation and drawings. KSR architects accept no liability for any expense, loss or damage of whatsoever nature and however arising from any variation made to this drawing or in the execution of the work to which it relates which has not been referred to them and their approval obtained.  
Do not scale from this drawing or the digital data, only figured dimensions are to be used. For planning refer to linear scale. Check all dimensions on site prior to carrying out any works - advise any discrepancy.

Notes/Comments

Rev	Description	Date	Drawn
01	Issue for planning		

Planning

Key Plan



**KSRARCHITECTS**  
KSR Architects LLP  
14 Gower Street  
London WC1E 6BT  
T: +44 (0)20 7692 5000  
www.ksararchitects.com

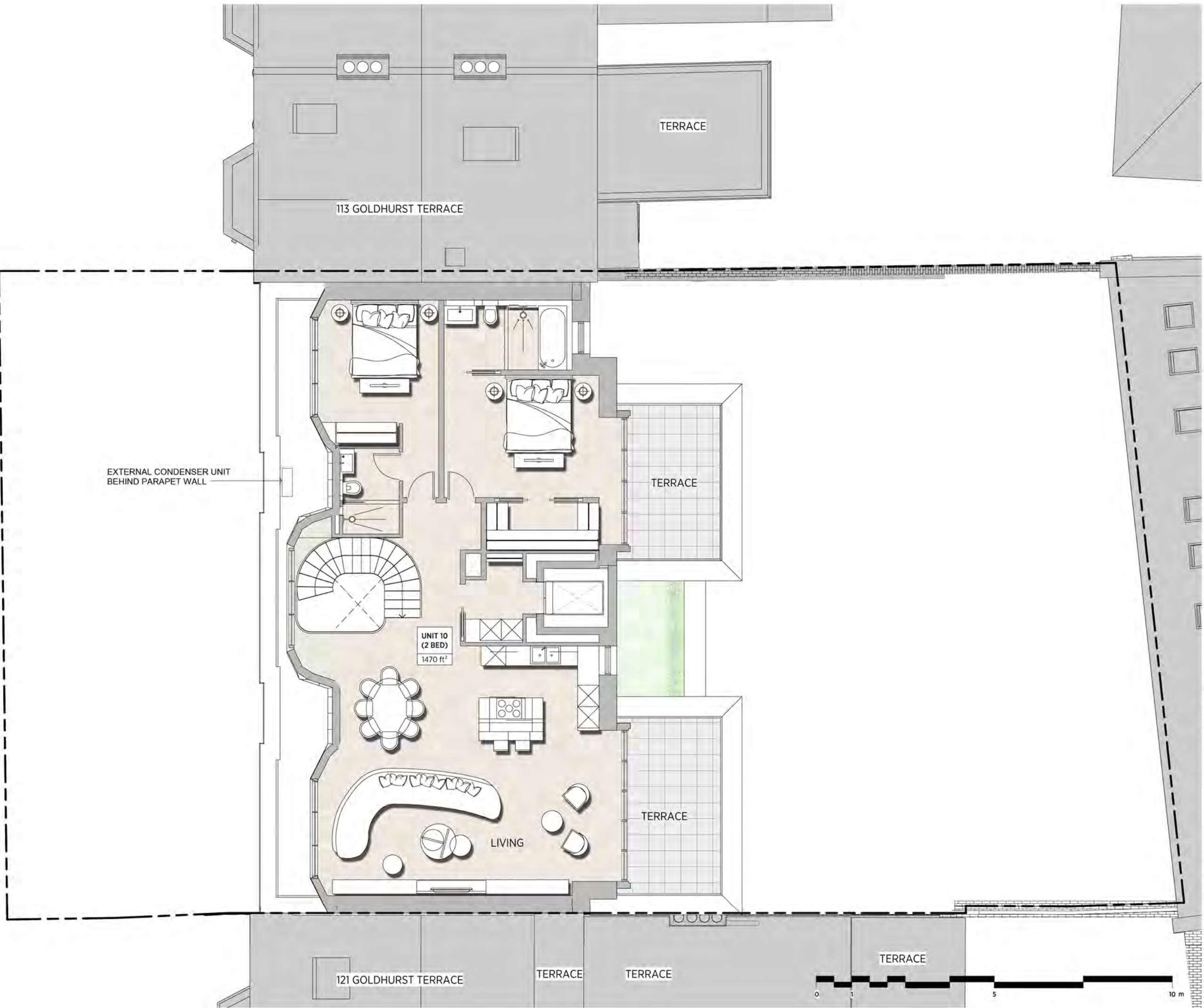
Project:  
**GOLDHURST TERRACE**

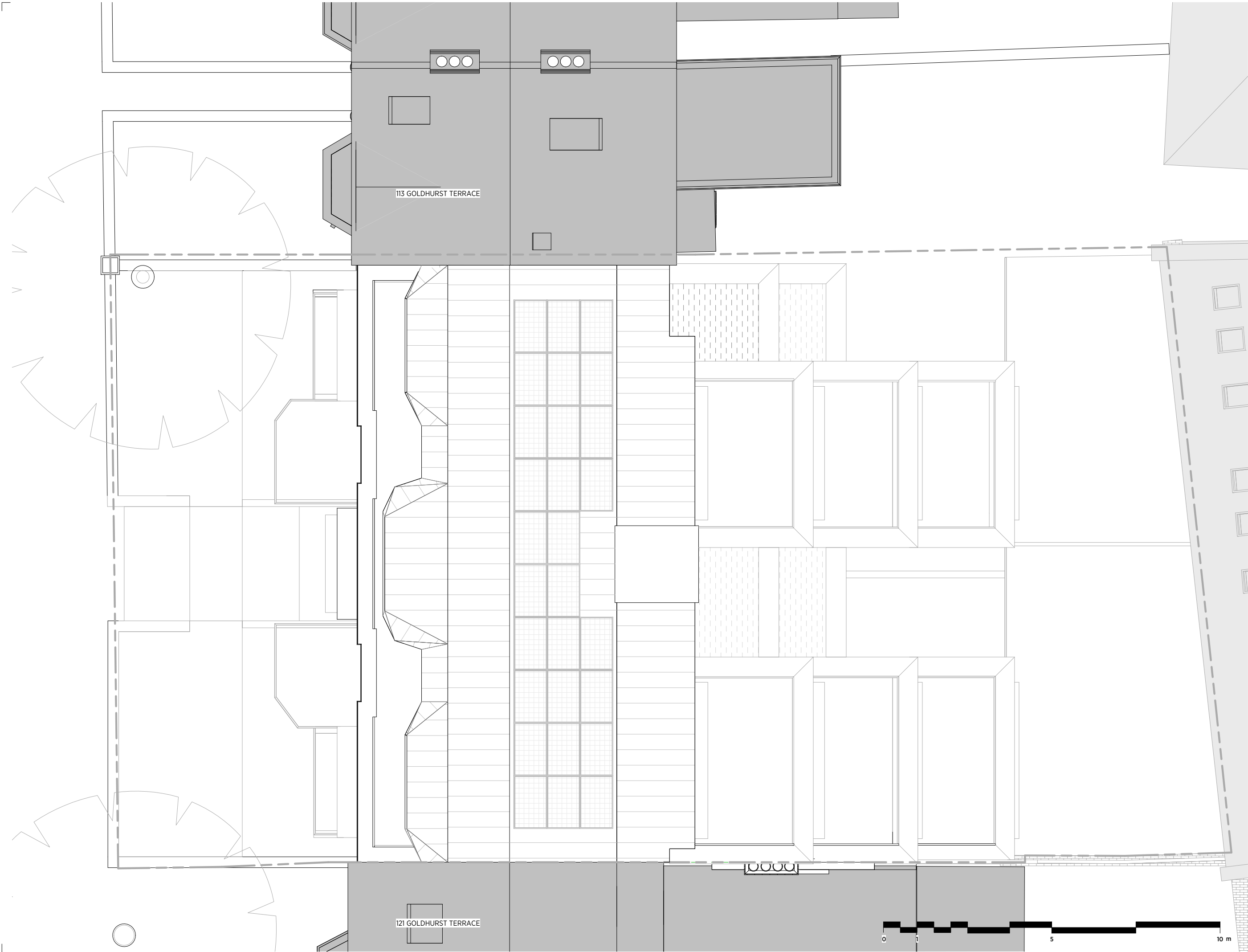
Title:  
**Third Floor GA Plan**

Date	Drawn By	Checked By
10/06/2018	DC	MS

Scale	Project Ref	Drawing No	Revision
1:100 (A3)	15033	15033-P130	

15033 15033-P130



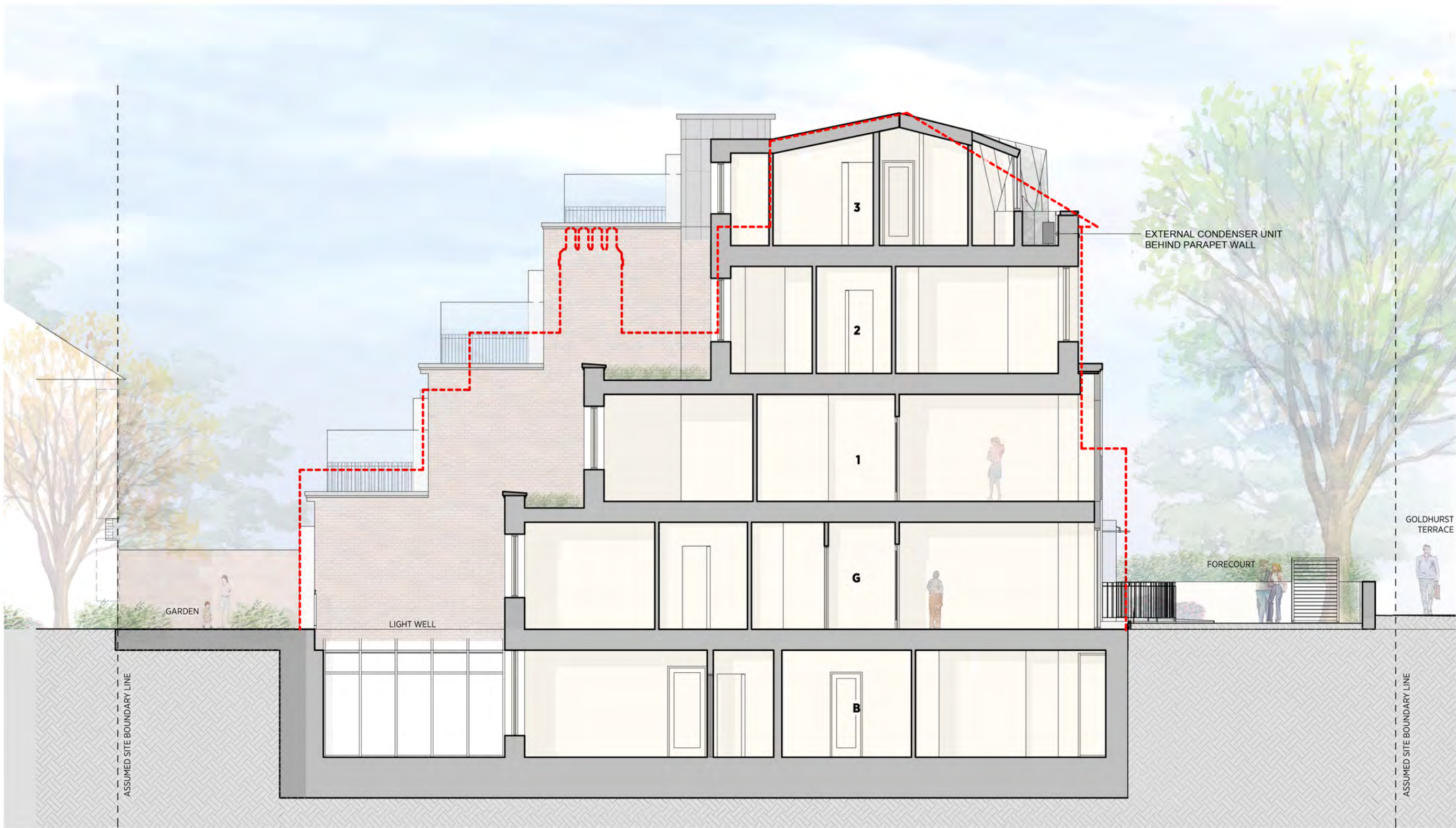


General notes:  
This drawing is copyright of KSR architects. This drawing must be read in conjunction with the Designer's Risk Assessment, specification and all other relevant documentation and drawings. KSR architects accept no liability for any expense, loss or damage of whatsoever nature and however arising from any variation made to this drawing or in the execution of the work to which it relates which has not been referred to them and their approval obtained.  
Do not scale from this drawing or the digital data, only figured dimensions are to be used. For Planning refer to linear scale. Check all dimensions on site prior to carrying out any works - advise any discrepancy

Notes/Legends

Rev	Description	Date	Chd
© KSR architects			
Stamp			
PLANNING			
Key Plan			
KSRARCHITECTS			
KSR Architects LLP 14 Grosvenor Street London W1W 0HD Email: info@ksrarchitects.com Tel: +44 (0)20 7882 5000 www.ksrarchitects.com			
Project: GOLDHURST TERRACE			
Title: Roof GA Plan			
Date: 10/06/2016		Drawn By: DC	Checked: RS
Scale: 1:50 @ A1 / 1:100 @ A3		Status: Planning	
Project Ref: 15033	Drawing No: 15033-P140	Revision:	





General notes:  
This drawing is copyright of KSR architects. This drawing must be read in conjunction with the Designer's Risk Assessment, specification and all other relevant documentation and drawings. KSR architects accept no liability for any expense, loss or damage of whatsoever nature and however arising from any variation made to this drawing or in the execution of the work to which it relates which has not been referred to them and their approval obtained.  
Do not scale from this drawing or the digital data, only figured dimensions are to be used. For Planning refer to linear scale. Check all dimensions on site prior to carrying out any works - advise any discrepancy

Notes/Legends

--- OUTLINE OF EXISTING BUILDING

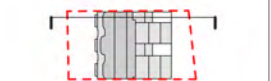
Rev Description Date Chd

© KSR architects

Stamp

PLANNING

Key Plan



**KSRARCHITECTS**  
KSR Architects LLP  
14 Greenland Street  
London W1M 0ND  
t: +44 (0)20 7882 5000  
e: info@ksrarchitects.com  
www.ksrarchitects.com

Project:  
**GOLDHURST TERRACE**

Title:  
**Section A-A**

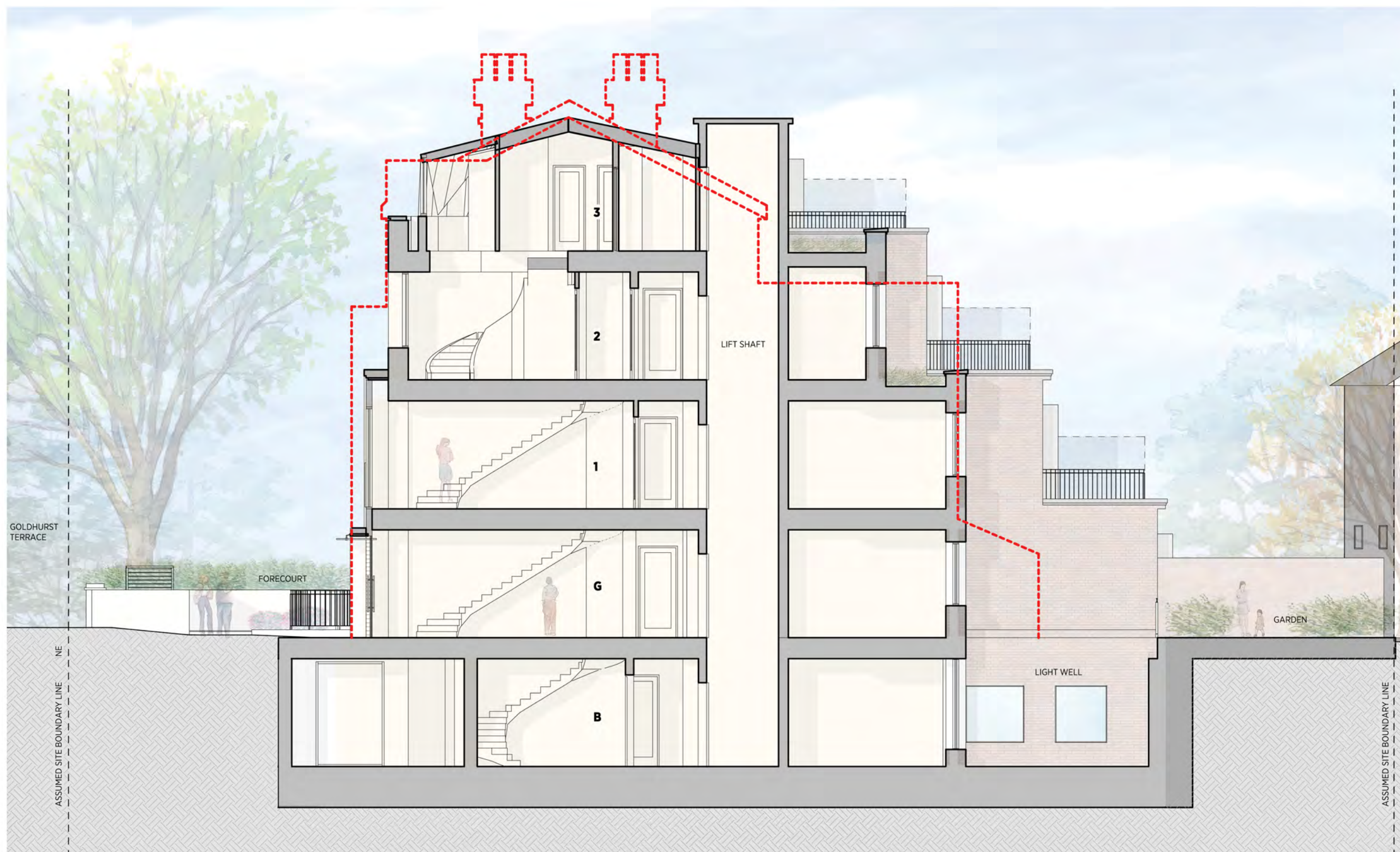
Date: 10/06/2016 Drawn By: DC Checked: RS

Scale: 150 @ A1 / 1500 @ A3 Status: Planning

Project Ref: 15033 Drawing No: 15033-P210 Revision:







General notes:  
This drawing is copyright of KSR architects. This drawing must be read in conjunction with the Designer's Risk Assessment, specification and all other relevant documentation and drawings. KSR architects accept no liability for any expense, loss or damage of whatsoever nature and however arising from any variation made to this drawing or in the execution of the work to which it relates which has not been referred to them and their approval obtained.  
Do not scale from this drawing or the digital data, only figured dimensions are to be used. For planning refer to linear scale. Check all dimensions on site prior to carrying out any works - advice any discrepancy

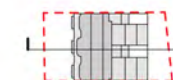
Notes/Legends

--- OUTLINE OF EXISTING BUILDING

Rev	Description	Date	Chd
1	© KSR architects		
2	Stamp		

PLANNING

Key Plan



**KSRARCHITECTS**  
KSR Architects LLP  
14 Gowerland Street  
London W1T 5GD  
Email: info@ksrarchitects.com  
Tel: +44 (0)20 7682 5000  
www.ksrarchitects.com

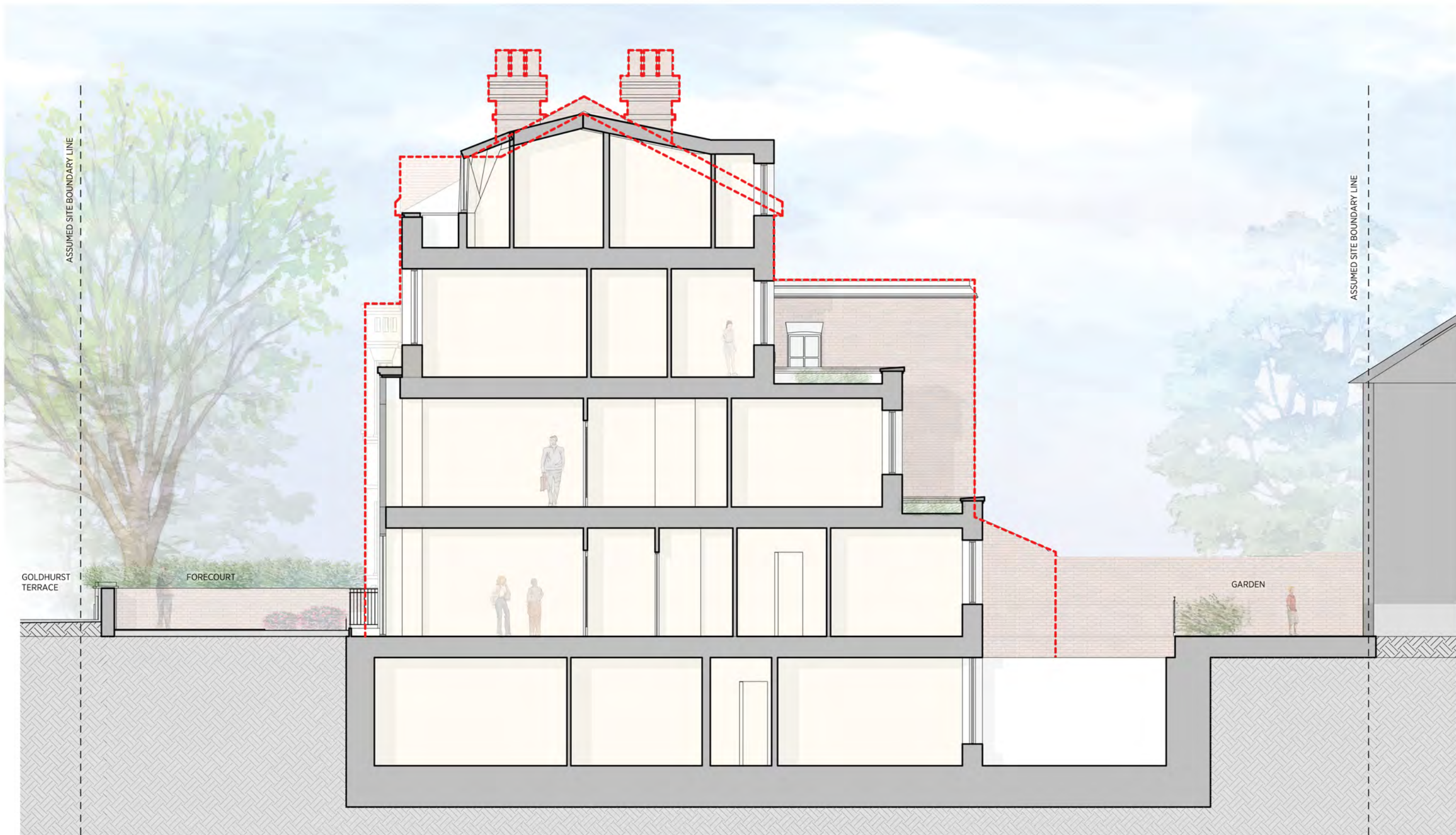
Project:  
**GOLDHURST TERRACE**

Title:  
**Section B-B**

Date: 10/06/2016	Drawn By: DC	Checked: RS
Scale: 1/50 @ A1 / 1/100 @ A3	Status: Planning	Revision:
Project Ref: 15033	Drawing No: 15033-P211	







General notes:  
This drawing is copyright of KSR architects. This drawing must be read in conjunction with the Designer's Risk Assessment, specification and all other relevant documentation and drawings. KSR architects accept no liability for any expense, loss or damage of whatsoever nature and however arising from any variation made to this drawing or in the execution of the work to which it relates which has not been referred to them and their approval obtained.  
Do not scale from this drawing or the digital data, only figured dimensions are to be used. For Planning refer to linear scale. Check all dimensions on site prior to carrying out any works - advice any discrepancy

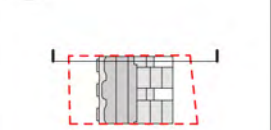
Notes/Legends  
--- OUTLINE OF EXISTING BUILDING

Rev	Description	Date	Chd
01	© KSR architects		

Stamp

PLANNING

Key Plan



**KSRARCHITECTS**  
KSR Architects LLP  
14 Gowerland Street  
London W1T 5GD  
Email: info@ksrarchitects.com  
Tel: +44 (0)20 7682 5000  
www.ksrarchitects.com

Project:  
**GOLDHURST TERRACE**

Title:  
**Section C-C**

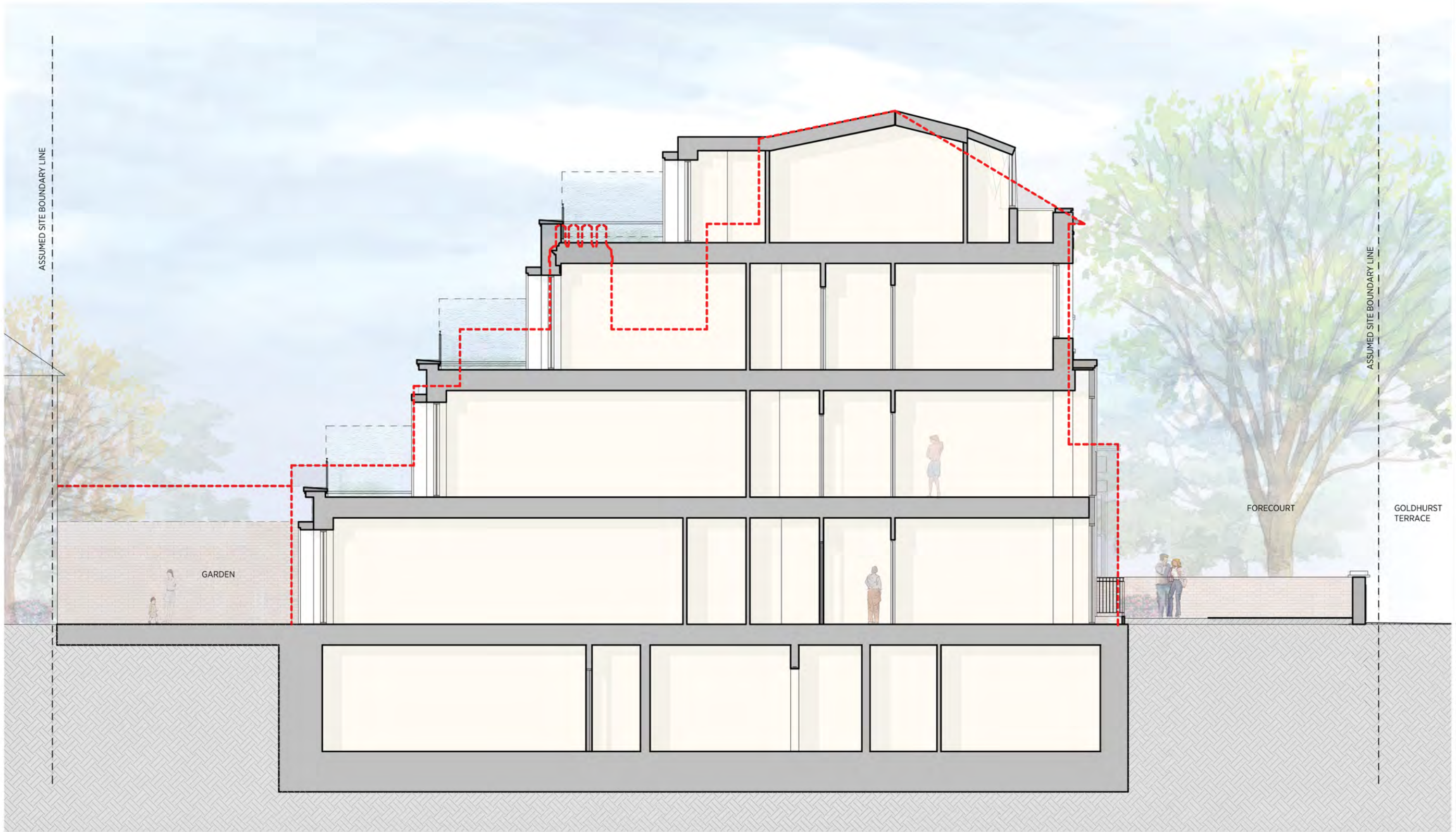
Date: 10/06/2018 Drawn By: DC Checked: RS

Scale: 1/50 @ A1 / 1/100 @ A3 Status: Planning

Project Ref: 15033 Drawing No: 15033-P212 Revision:







General notes:  
This drawing is copyright of KSR architects. This drawing must be read in conjunction with the Designer's Risk Assessment, specification and all other relevant documentation and drawings. KSR architects accept no liability for any expense, loss or damage of whatsoever nature and however arising from any variation made to this drawing or in the execution of the work to which it relates which has not been referred to them and their approval obtained.  
Do not scale from this drawing or the digital data, only figured dimensions are to be used. For Planning refer to linear scale. Check all dimensions on site prior to carrying out any works - advise any discrepancy.

Notes/Legends

--- OUTLINE OF EXISTING BUILDING

Rev Description Date Chd

© KSR architects

Stamp

PLANNING

Key Plan



**KSRARCHITECTS**  
KSR Architects LLP  
14 Gower Street London WC1E 6BP  
t: +44 (0)20 7682 5000  
e: info@ksrarchitects.com  
www.ksrarchitects.com

Project:  
**GOLDHURST TERRACE**

Title:  
**Section D-D**

Date: 10/06/2016 Drawn By: DC Checked: RS

Scale: 1:50 @ A1 / 1:100 @ A3 Status: Planning

Project Ref: 15033 Drawing No: 15033-P213 Revision:



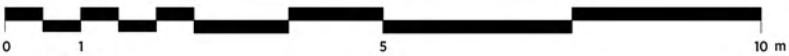




General notes:  
This drawing is copyright of KSR architects. This drawing must be read in conjunction with the Designer's Risk Assessment, specification and all other relevant documentation and drawings. KSR architects accept no liability for any expense, loss or damage of whatsoever nature and however arising from any variation made to this drawing or in the execution of the work to which it relates which has not been referred to them and their approval obtained.  
Do not scale from this drawing or the digital data, only figured dimensions are to be used. For Planning refer to linear scale. Check all dimensions on site prior to carrying out any works - advice any discrepancy

Notes/Legends

1 Front View (West)  
1:50



Rev	Description	Date	Chd
1	© KSR architects		
Stamp			
PLANNING			
Key Plan			
KSRARCHITECTS			
KSR Architects LLP 14 Grosvenor Street London W1T 3DG Email: info@ksrarchitects.com Tel: +44 (0)20 7612 5000 www.ksrarchitects.com			
Project: GOLDHURST TERRACE			
Title: Front (West) Elevation			
Date:	12/06/2016	Drawn By:	DC
Scale:	1:50 @ A1 / 1:100 @ A3	Status:	Planning
Project Ref:	15033	Drawing No:	15033-P310
		Checked:	RS
		Revision:	





1 Back View (East)  
1:50



General notes:  
This drawing is copyright of KSR architects. This drawing must be read in conjunction with the Designer's Risk Assessment, specification and all other relevant documentation and drawings. KSR architects accept no liability for any expense, loss or damage of whatsoever nature and however arising from any variation made to this drawing or in the execution of the work to which it relates which has not been referred to them and their approval obtained.  
Do not scale from this drawing or the digital data, only figured dimensions are to be used. For Planning refer to linear scale. Check all dimensions on site prior to carrying out any works - advice any discrepancy

Notes/Legends

Rev	Description	Date	Check
© KSR architects			
Stamp			
PLANNING			
Key Plan			
KSRARCHITECTS			
KSR Architects LLP 14 Gowerhead Street London W1W 0ND			
Email: info@ksrarchitects.com Tel: +44 (0)20 7632 5000 www.ksrarchitects.com			
Project:			
GOLDHURST TERRACE			
Title:			
Rear (East) Elevation			
Date: 10/06/2016		Drawn By: DC	Checked: RS
Scale: 150 @ A1 / 100 @ A3		Status: Planning	
Project Ref:	Drawing No:	Revisions:	
15033	15033-P311		