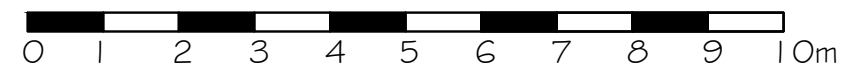
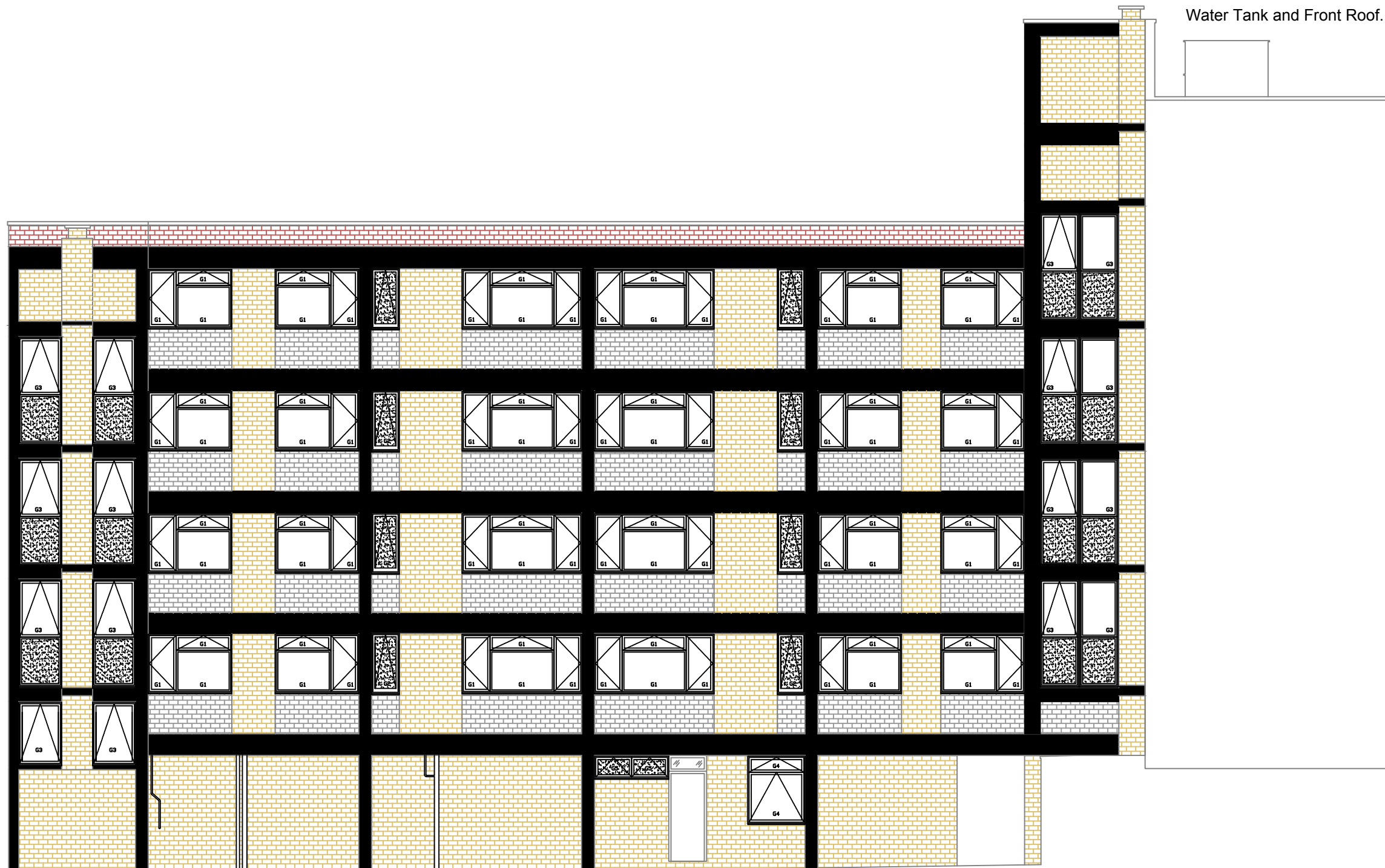


No dimensions are to be scaled from this drawing. All dimensions are to be checked on site, where discrepancy occurs between specification and drawings the supervising officer must be notified.

Notes:

Glazing:	
External:	Internal:
G1 4mm clear	4mm clear
G2 4mm obscure	4mm clear
G3 4mm toughened clear	4mm toughened clear
G4 6.44mm laminated clear	4mm clear
G5 6.44mm laminated clear	4mm obscure
G6 6.44mm laminated clear	6mm toughened clear
G7 6.44mm toughened obscure	6mm toughened clear
P1 Insulated aluminium panel faced both sides with PPC aluminium sheet together with insulated plywood core	



NORTH ELEVATION

Amendments:

Drawing type:

Planning

Client: The Governing Body of Rugby School
c/o Farebrother

Project:
Rokeby House - Externals

Title:
Proposed North Elevation

Scale: 1:100 @A3 Date: May 2016

Drawn: DS Checked: CPS

Drg.no: 124003.07

Rev:

Watts.

Watts Group Limited
1 Great Tower Street
London EC3R 5AA
T: 020 7280 8000
watts.co.uk

