

No dimensions are to be scaled from this drawing. All dimensions are to be checked on site, where discrepancy occurs between specification and drawings the supervising officer must be notified.

Notes:

Glazing:
External:
 G1 4mm clear
 G2 4mm obscure
 G3 4mm toughened clear
 G4 6.44mm laminated clear
 G5 6.44mm laminated clear
 G6 6.44mm laminated clear
 G7 6.44mm toughened obscure
Internal:
 4mm clear
 4mm clear
 4mm toughened clear
 4mm clear
 4mm obscure
 6mm toughened clear
 6mm toughened clear
 P1 Insulated aluminium panel faced both sides with PPC aluminium sheet together with insulated plywood core

Balcony doors to open in

Amendments:

Drawing type:

Planning

Client: The Governing Body of Rugby School
 c/o Farebrother

Project:
 Rokeby House - Externals

Title:
 Proposed West Elevation

Scale: 1:100 @A3 Date: May 2016

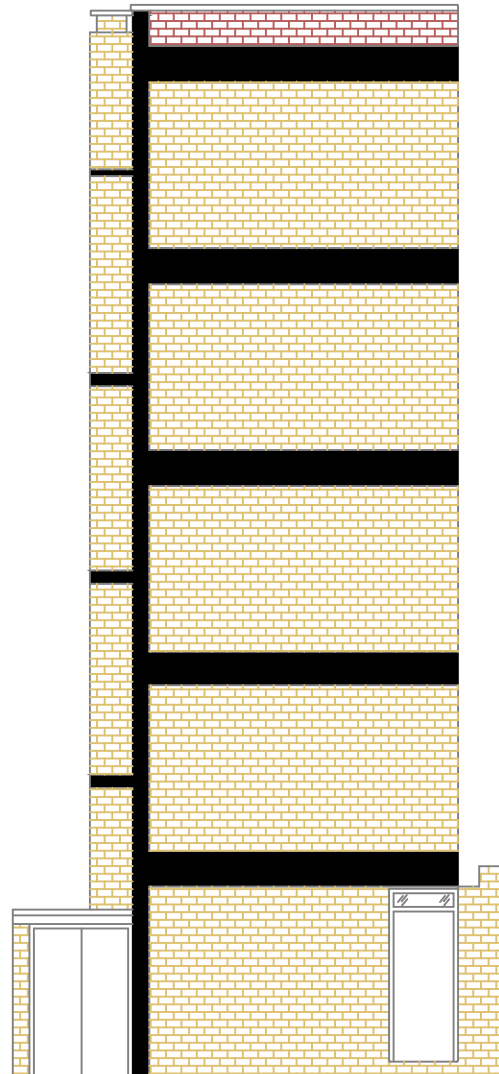
Drawn: DS Checked: CPS

Drg.no: 124003.05

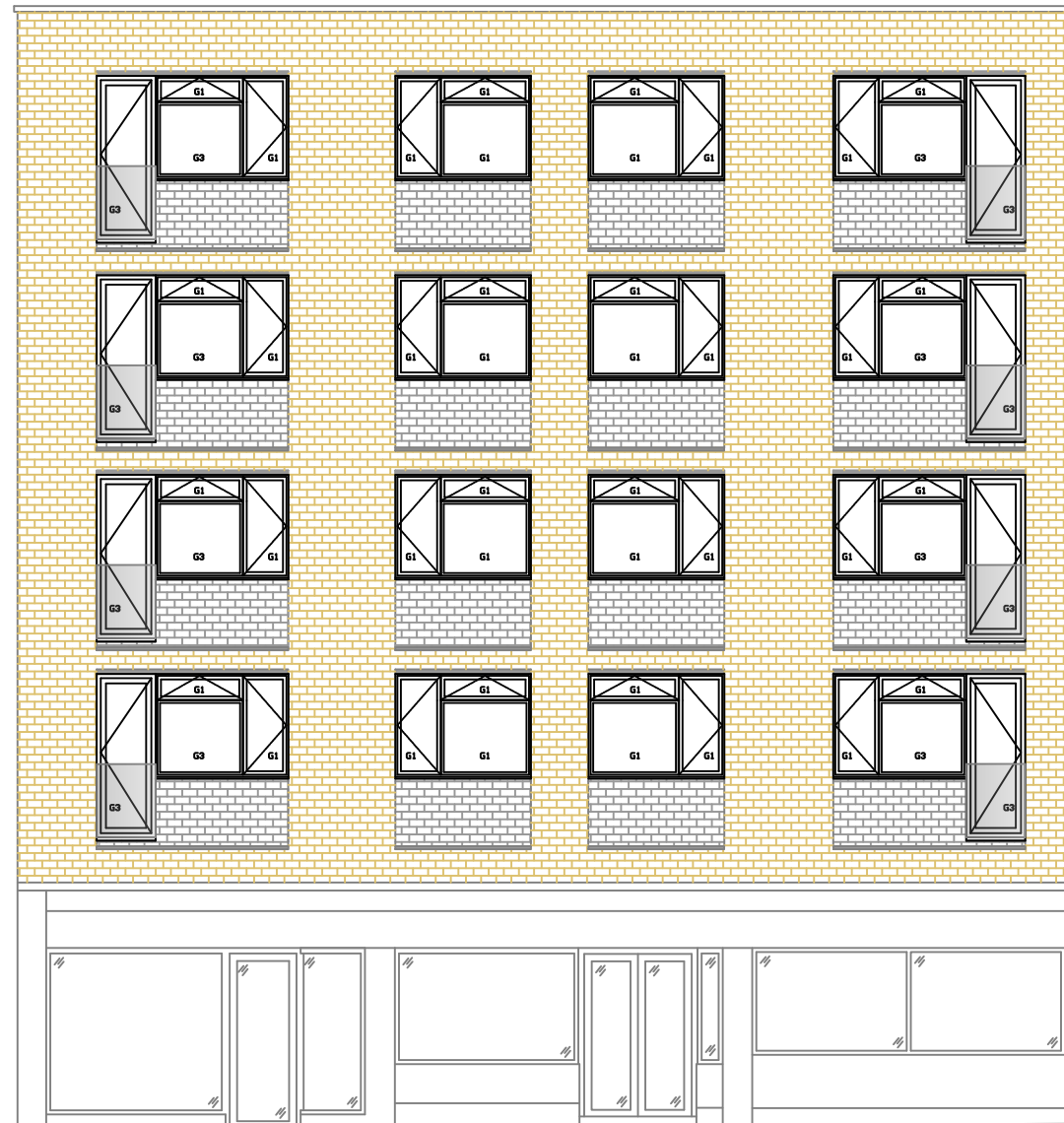
Rev:

Watts.

Watts Group Limited
 1 Great Tower Street
 London EC3R 5AA
 T: 020 7280 8000
watts.co.uk



WEST ELEVATION - REAR



WEST ELEVATION - FRONT

