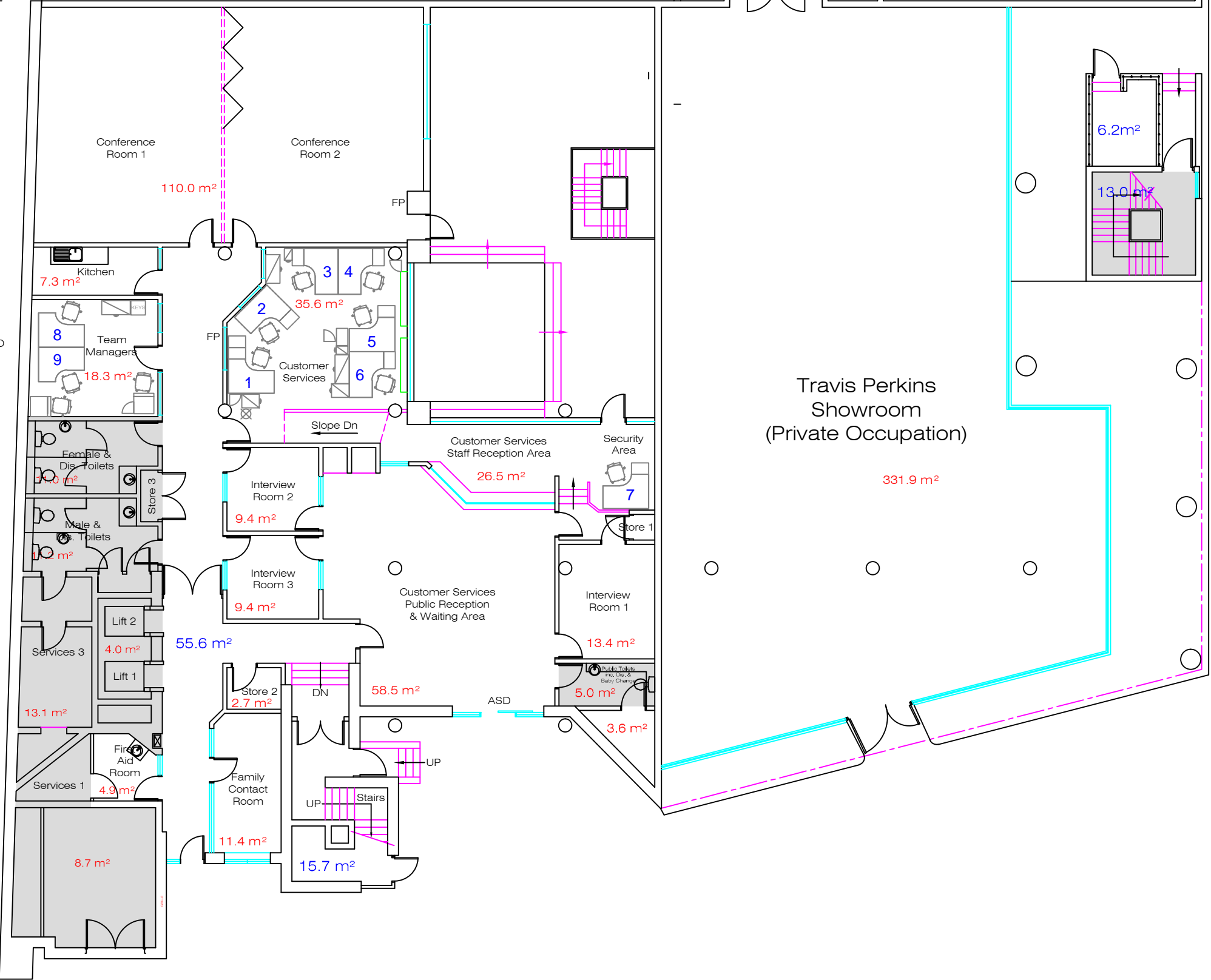


GIA = 609 m sq
NET INTERNAL AREA = 388 m²
Housing Management = 80.5 m²
First Aid = 4.9 m²
Public Reception = 56.5 m²
Interview Rooms = 43.6 m²
Store Rooms = 2.7 m²
Meeting Rooms = 110 m²
Kitchens = 7.3 m²

Housing
Management
Hamstead DHO
Customer
Services



Rev	Amendment Details	Date	By
-----	-------------------	------	----



Camden
FINANCE DIRECTORATE

Project and Consultancy Services
Strategy and Projects Team
302 Town Hall Extension
Argyle Street
London WC1H 8NG
CAD Manager: C O'Neill
E: christina.oneill@camden.gov.uk
T: 020 7974 1870



INVESTOR IN PEOPLE

Property: Hampstead
District Housing Office (DHO)
156 West End Lane
London NW6 2SD

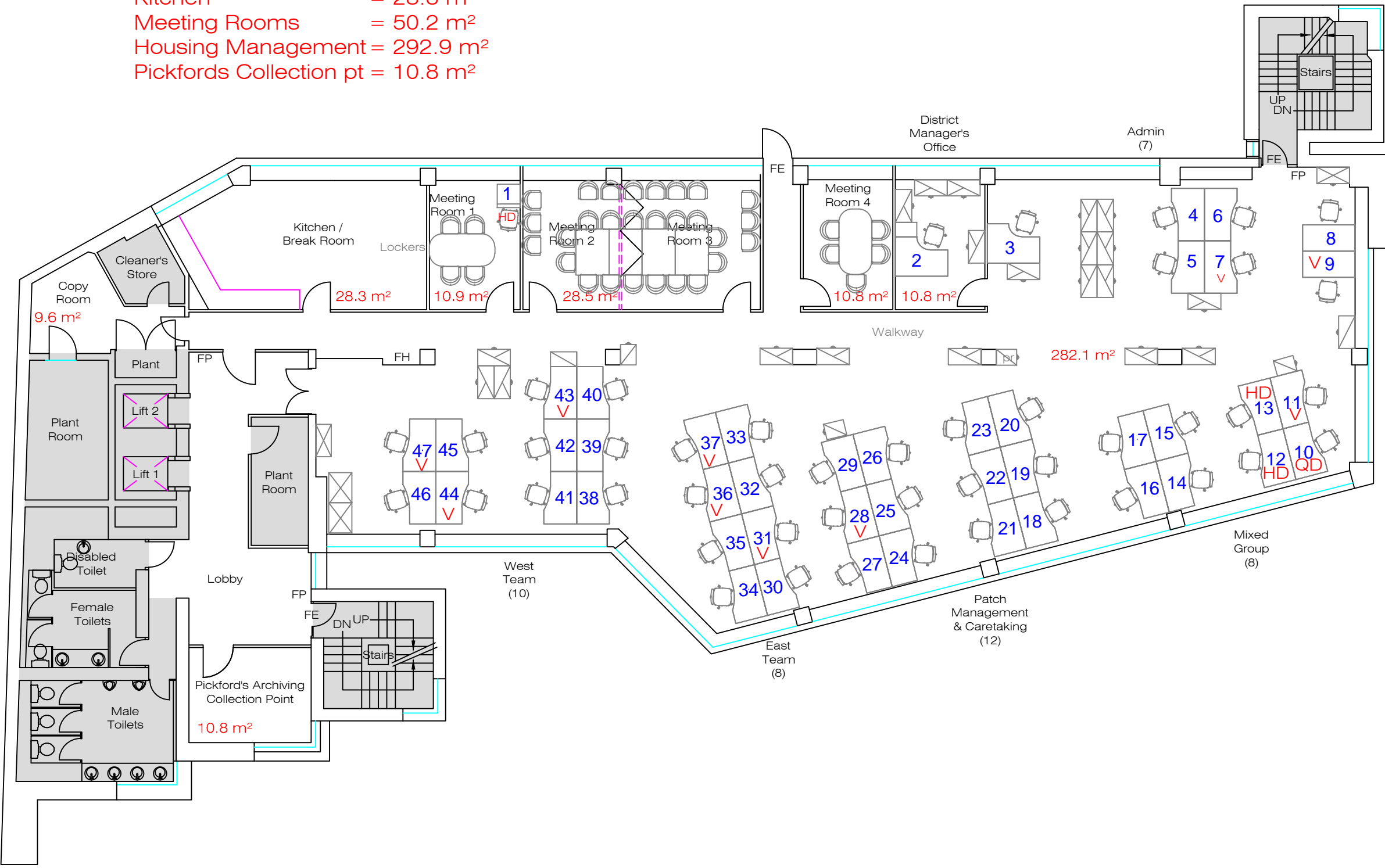
Floor: Ground Floor

Drawing Title:
Desk Use Layout

Drawn by:	Checked by:	Date:	Paper Size:	Scale:
CON		15/01/09	A3	NTSS

Drawing No:	Rev:
09-01-21-WEL-G-E	

GIA=534 m sq
NET INTERNAL AREA =403 m²
Kitchen = 28.3 m²
Meeting Rooms = 50.2 m²
Housing Management = 292.9 m²
Pickfords Collection pt = 10.8 m²



Rev	Amendment Details	Date	By
-----	-------------------	------	----

Camden
FINANCE DIRECTORATE

Project and Consultancy Services
Strategy and Projects Team
302 Town Hall Extension
Argyle Street
London WC1H 8NG
CAD Manager: C O'Neill
E: christina.oneill@camden.gov.uk
T: 020 7974 1870

INVESTOR IN PEOPLE

Property: Hampstead
District Housing Office (DHO)
156 West End Lane
London NW6 2SD

Floor: First Floor

Drawing Title:
Desk Use Layout

Drawn by: CON	Checked by:	Date: 15/01/09	Paper Size: A3	Scale: NTSS
Drawing No: 09-01-15-WEL-G-FP1				Rev: 1

GIA = 534 m sq
NET INTERNAL AREA = 401 m²
Kitchen = 6.39 m²
Savaguarding & Social Care = 302.41m²
Meeting Rooms = 67.43 m²
Kitchen = 6.39 m²
Store = 20 m²
Comms Room = 11.63 m²



1	General Update	18/8/06	MDS
Rev	Amendment Details	Date	By

Camden
FINANCE DIRECTORATE

Project and Consultancy Services
Strategy and Projects Team
302 Town Hall Extension
Argyle Street
London WC1H 8NG
CAD Manager: C O'Neill
E: christina.oneill@camden.gov.uk
T: 020 7974 1870

INVESTOR IN PEOPLE

Property: Hampstead
District Housing Office (DHO)
156 West End Lane
London NW6 2SD

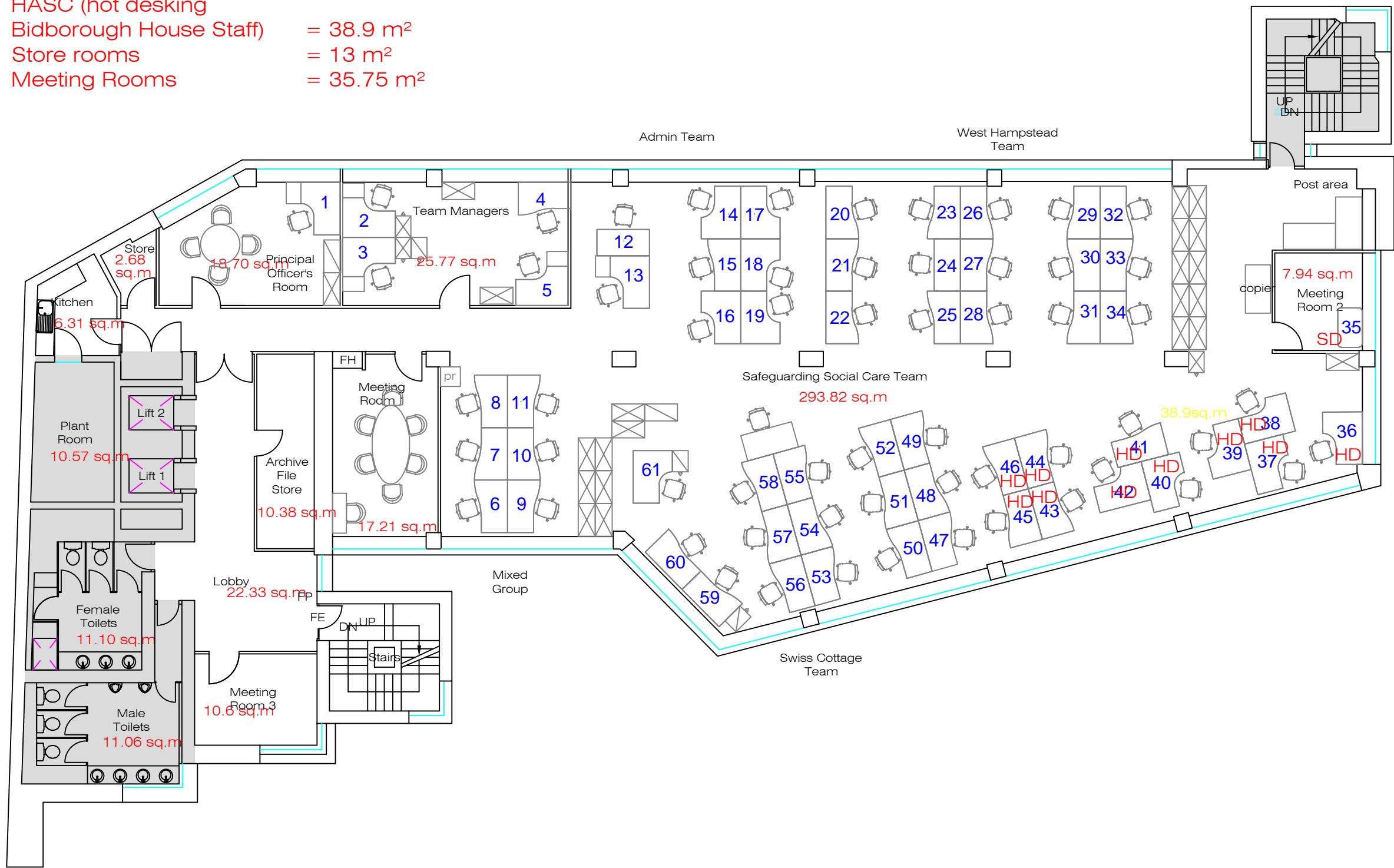
Floor: Second Floor

Drawing Title: Desk Use Layout

Drawn by:	Checked by:	Date:	Paper Size:	Scale:
CON		15/01/09	A3	NTSS

Drawing No:	Rev:
09-01-15-WEL-G-FP2	1

GIA = 534 m sq
NET INTERNAL AREA = 412 m²
Kitchen = 6.31 m²
Safeguarding & Social Care = 299.39m²
HASC (hot desking
Bidborough House Staff) = 38.9 m²
Store rooms = 13 m²
Meeting Rooms = 35.75 m²



1	General Update	18/8/06	MDS
Rev	Amendment Details	Date	By



Project and Consultancy Services
Strategy and Projects Team
302 Town Hall Extension
Argyle Street
London WC1H 8NG
CAD Manager: C O'Neill
E: christina.oneill@camden.gov.uk
T: 020 7974 1870



INVESTOR IN PEOPLE

Property: Hampstead
District Housing Office (DHO)
156 West End Lane
London NW6 2SD

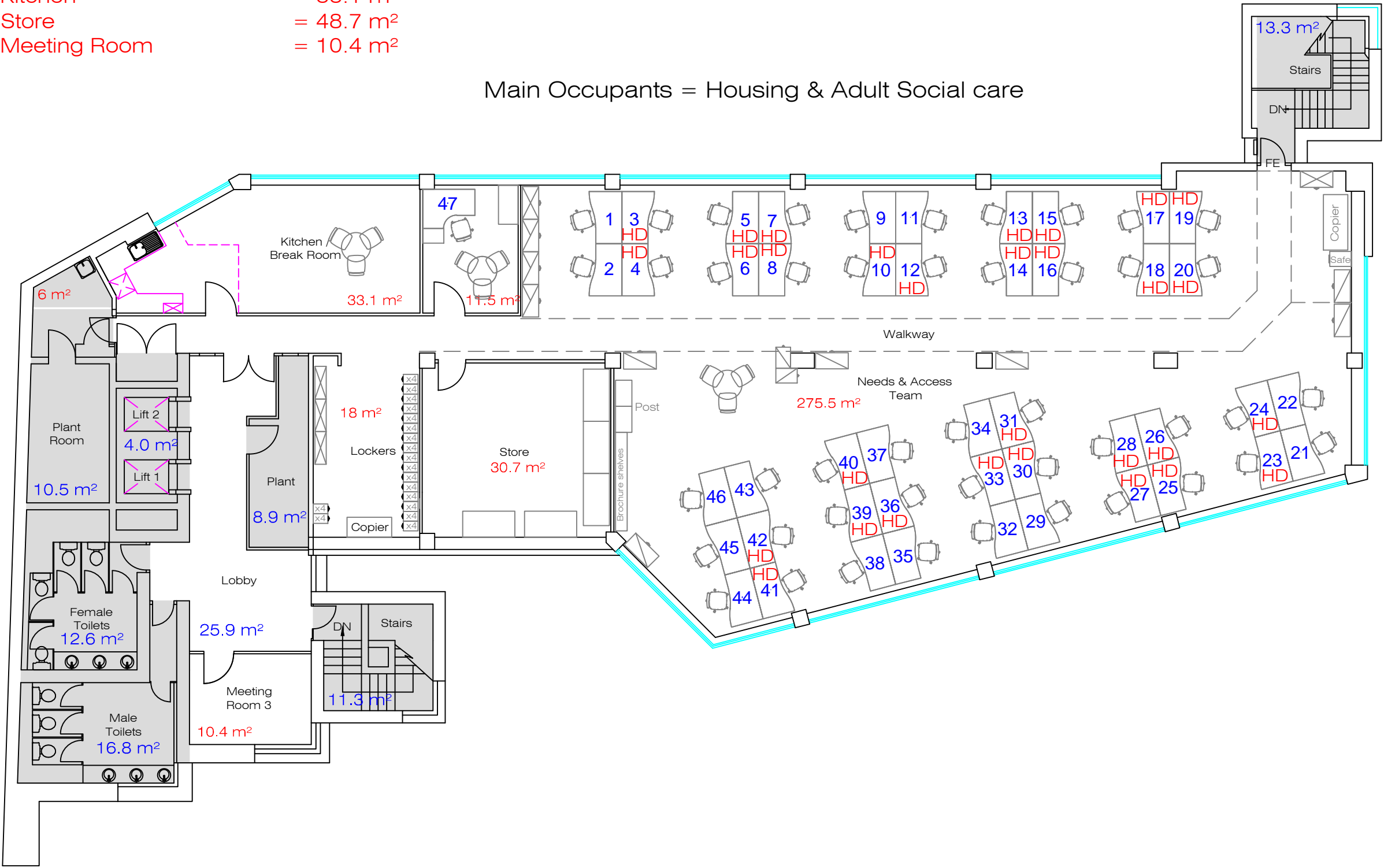
Floor: Third Floor

Drawing Title:
Desk Use Layout

Drawn by:	Checked by:	Date:	Paper Size:	Scale:
CON		15/01/09	A3	NTSS
Drawing No:	09-01-15-WEL-G-FP3			Rev:
				1

GIA = 534 m sq
NET INTERNAL AREA = 388 m²
Needs & Access = 275.3 m²
Kitchen = 33.1 m²
Store = 48.7 m²
Meeting Room = 10.4 m²

Main Occupants = Housing & Adult Social care



1	General Update	18/8/06	MDS
Rev	Amendment Details	Date	By



Project and Consultancy Services
Strategy and Projects Team
302 Town Hall Extension
Argyle Street
London WC1H 8NG
CAD Manager: C O'Neill
E: christina.oneill@camden.gov.uk
T: 020 7974 1870



INVESTOR IN PEOPLE

Property: Hampstead
District Housing Office (DHO)
156 West End Lane
London NW6 2SD

Floor: Fourth Floor

Drawing Title:
Desk Use Layout

Drawn by:	Checked by:	Date:	Paper Size:	Scale:
CON		15/01/09	A3	NTSS

Drawing No:	Rev:
09-01-15-WEL-G-FP4	1