

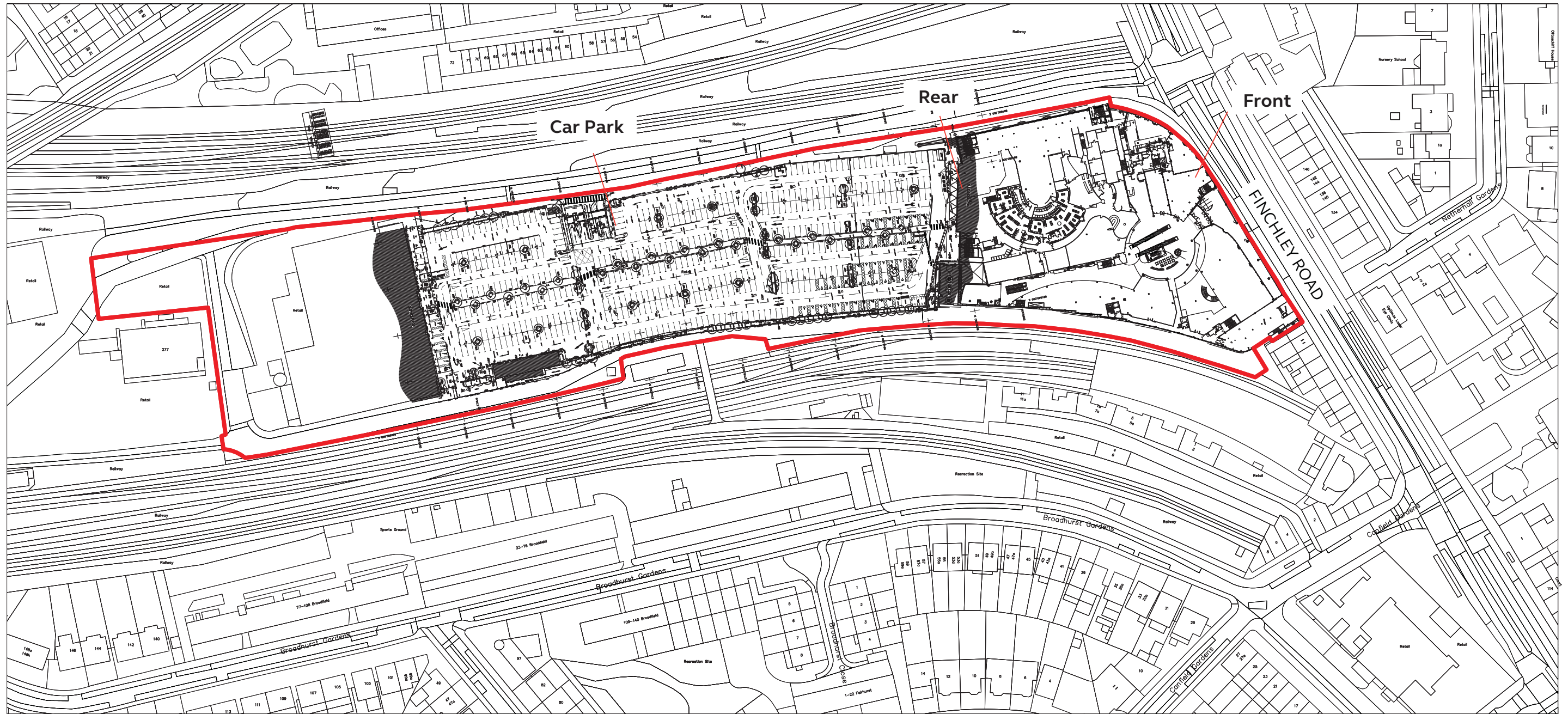
LAND SECURITIES

O2 Shopping Centre, London NW3

External Banners and Entrance Signs

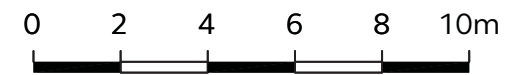
O2 Shopping Centre, London NW3

Site plan



SCALE 1:2500

SITE BOUNDARY LINE

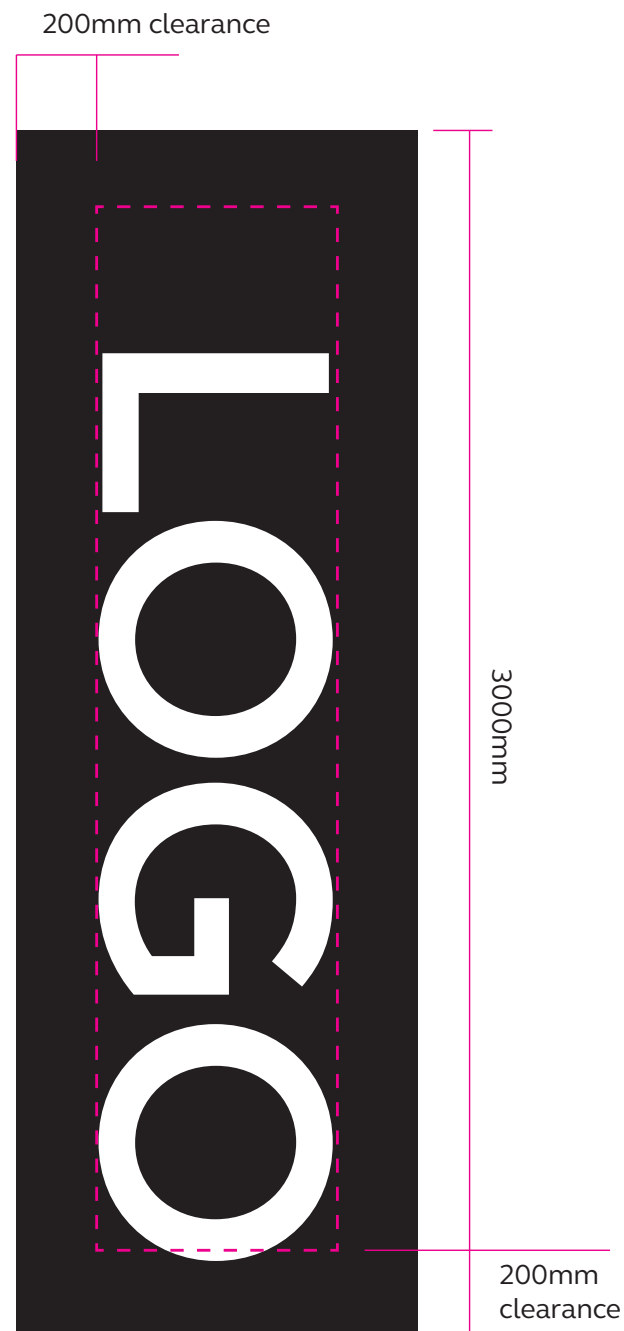


External banners

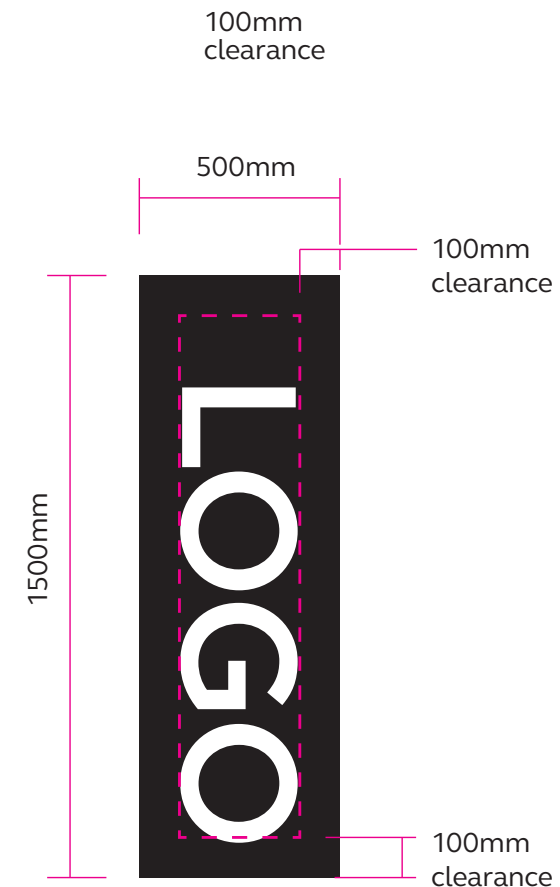
Overview



**Banner Sign – Finchley Road
Banner type 1**
Car park directional
Refs: BN_01



**Banner Sign – Finchley Road and Rear
Banner type 1**
Tenant logo to fit within guidelines
Refs: BN_02 - BN_09



**Car Park Banner sign
Banner type 2**
Lamp posts
Refs: CPB_01 - CPB_42

Banner sign content

Banner signs are double sided and each side will display varied content.

Tenant logo proportions will be controlled with guidelines as shown.

CONTENT TO BE CONFIRMED.

Artwork for banners to be supplied.

GENERAL NOTES

All dimensions given are for estimating purpose only. Contractor to take exact survey dimensions prior to commencement of work.

The sign manufacturer must produce manufacturing drawings and schedules to be submitted to Air Design for content approval prior to manufacture.

Contractor to advise on best installation methods and foundations.

PLANNING

Project: O2 Finchley Road
Client: Land Securities
Drawing No: N/A
Drawing Title: Banner Types
Scale: N/A
Date: 20/04/2016

Typeface

Gotham

AIR

Gotham Light

ABCDEFGHIJKLMNOPQRSTUVWXYZ
abcdefghijklmnopqrstuvwxyz
1234567890

Gotham Regular

ABCDEFGHIJKLMNOPQRSTUVWXYZ
abcdefghijklmnopqrstuvwxyz
1234567890

Gotham Medium

ABCDEFGHIJKLMNOPQRSTUVWXYZ
abcdefghijklmnopqrstuvwxyz
1234567890

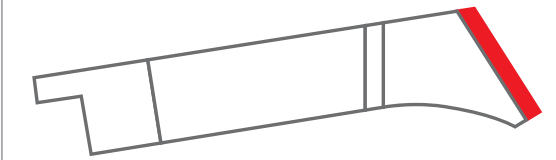


Finchley Road

A very legible typeface with open counters and character shapes that are obvious and easy to recognise.

It is available for download at:
<http://www.typography.com/fonts/gotham/styles>

Front (Finchley Road) Location visual



BN_01-BN_05. Banner signs

1000 x 3000mm approx.
Quantity: x5 off

Double sided banner signs from external grade high-quality banner PVC. Banners secured to existing columns with appropriate fixings to satisfy wind-loading requirements.

Banner signs to be illuminated via white LED lights mounted on banner holding structure. Illumination to wash three perimeters of each banners.

LED Illumination. 240 V 13amp power required at location.

All illumination will be static and no more than 540 candelas per square metre.

Contractor to advise on best lighting specification and technique.

Please note logos shown are for illustration purposes only. Graphic content of banners will vary.

GENERAL NOTES

All dimensions given are for estimating purpose only. Contractor to take exact survey dimensions prior to commencement of work.

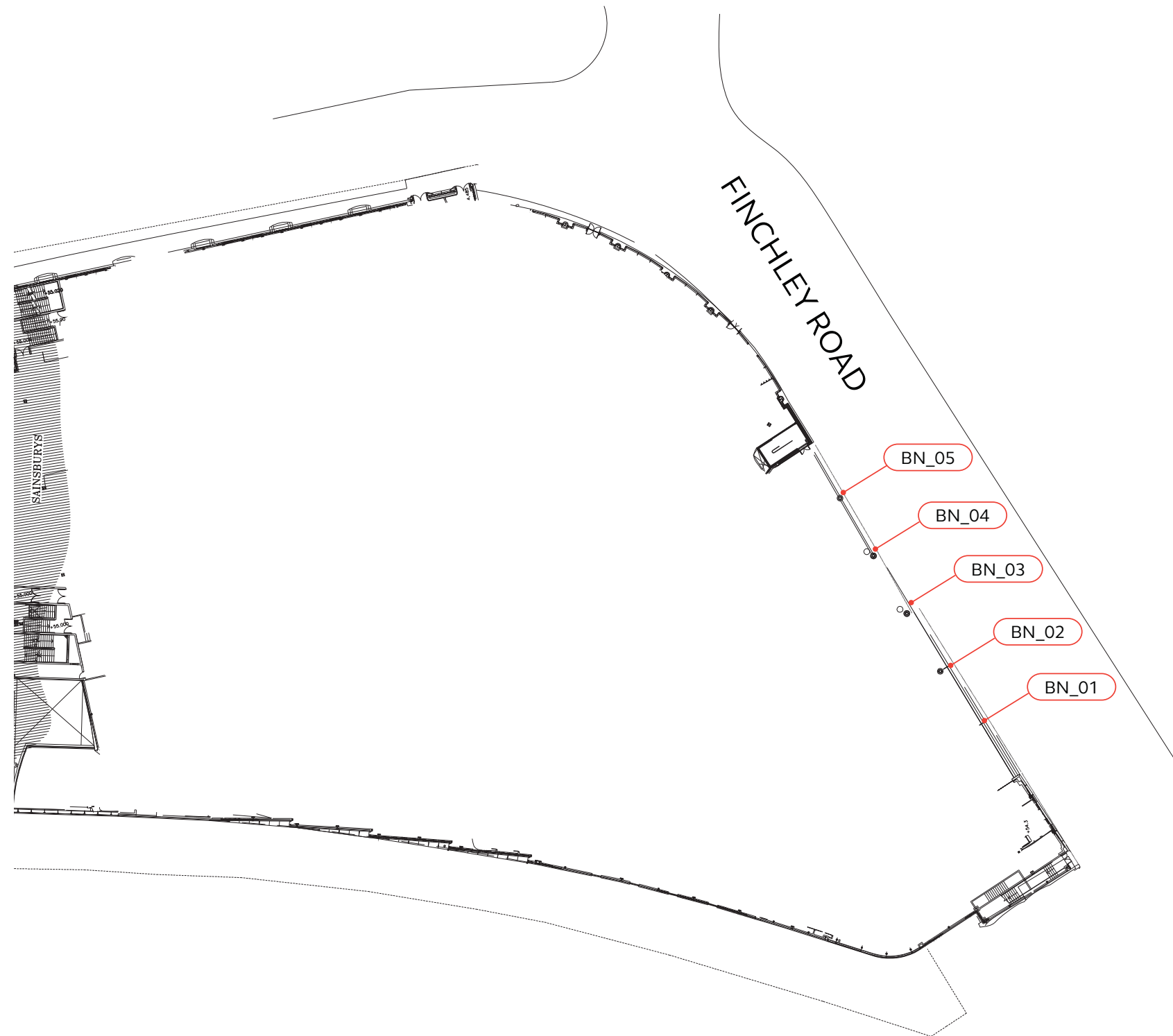
The sign manufacturer must produce manufacturing drawings and schedules to be submitted to Air Design for content approval prior to manufacture.

Contractor to advise on best installation methods and foundations.

PLANNING

Project: O2 Finchley Road
Client: Land Securities
Drawing No: N/A
Drawing Title: Finchley Road - facade
Scale: N/A
Date: 20/04/2016

Front (Finchley Road) – plan Sign location



BN_01-BN_05. Banner signs

1000 x 3000mm approx.
Quantity: x5 off

Double sided banner signs from external grade high-quality banner PVC. Banners secured to existing columns with appropriate fixings to satisfy wind-loading requirements.

Banner signs to be illuminated via white LED lights mounted on banner holding structure. Illumination to wash three perimeters of each banners.

LED Illumination. 240 V 13amp power required at location.

All illumination will be static and no more than 540 candelas per square metre.

Contractor to advise on best lighting specification and technique.

Please note logos shown are for illustration purposes only. Graphic content of banners will vary.

GENERAL NOTES

All dimensions given are for estimating purpose only. Contractor to take exact survey dimensions prior to commencement of work.

The sign manufacturer must produce manufacturing drawings and schedules to be submitted to Air Design for content approval prior to manufacture.

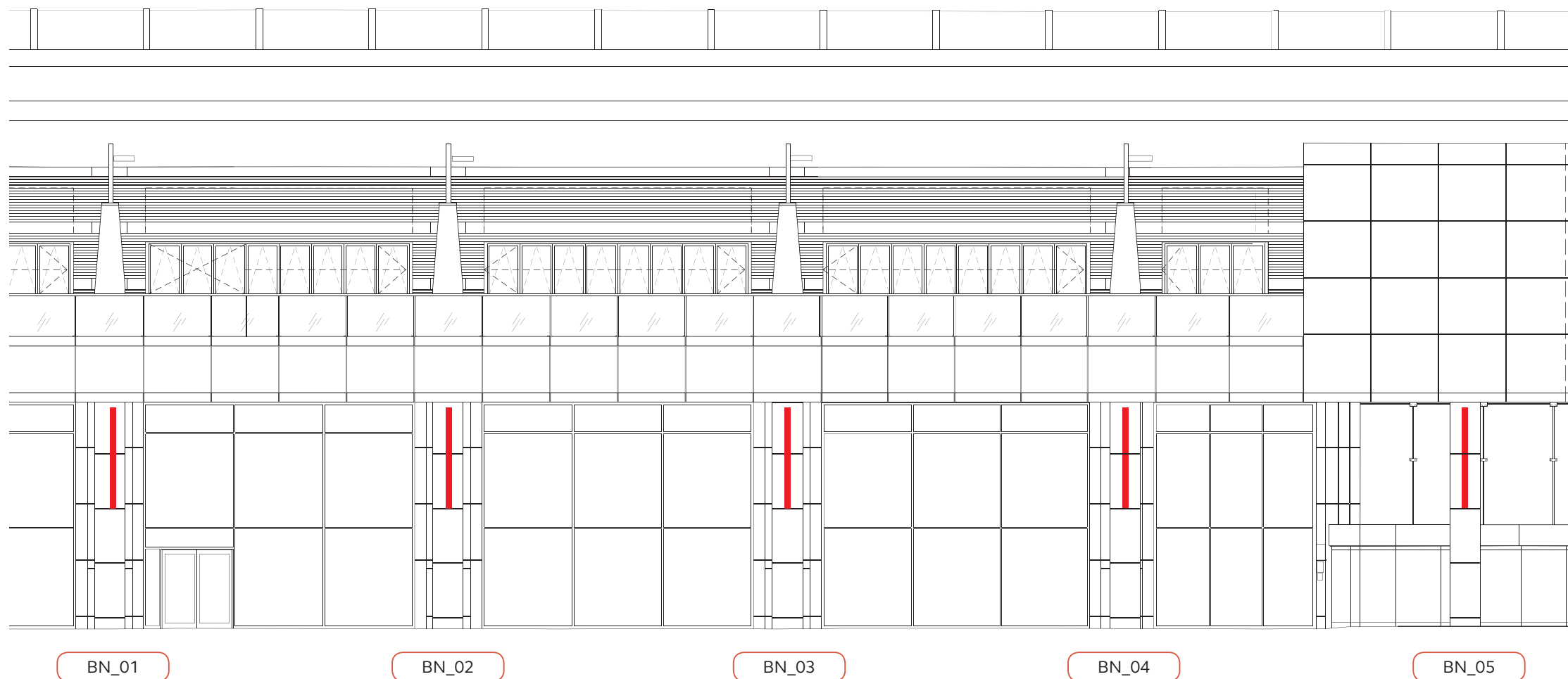
Contractor to advise on best installation methods and foundations.

PLANNING

Project: O2 Finchley Road
Client: Land Securities
Drawing No: N/A
Drawing Title: Finchley Road – plan
Scale: N/A
Date: 20/04/2016

Front (Finchley Road) – elevation

Sign location



BN_01-BN_05. Banner signs

1000 x 3000mm approx.
Quantity: x5 off

Double sided banner signs from external grade high-quality banner PVC. Banners secured to existing columns with appropriate fixings to satisfy wind-loading requirements.

Banner signs to be illuminated via white LED lights mounted on banner holding structure. Illumination to wash three perimeters of each banners.

LED Illumination. 240 V 13amp power required at location.

All illumination will be static and no more than 540 candelas per square metre.

Contractor to advise on best lighting specification and technique.

Please note logos shown are for illustration purposes only. Graphic content of banners will vary.

GENERAL NOTES

All dimensions given are for estimating purpose only. Contractor to take exact survey dimensions prior to commencement of work.

The sign manufacturer must produce manufacturing drawings and schedules to be submitted to Air Design for content approval prior to manufacture.

Contractor to advise on best installation methods and foundations.

PLANNING

Project: O2 Finchley Road
Client: Land Securities
Drawing No: N/A
Drawing Title: Finchley Road – elevation
Scale: 1:100
Date: 20/04/2016

Front (Finchley Road) – section

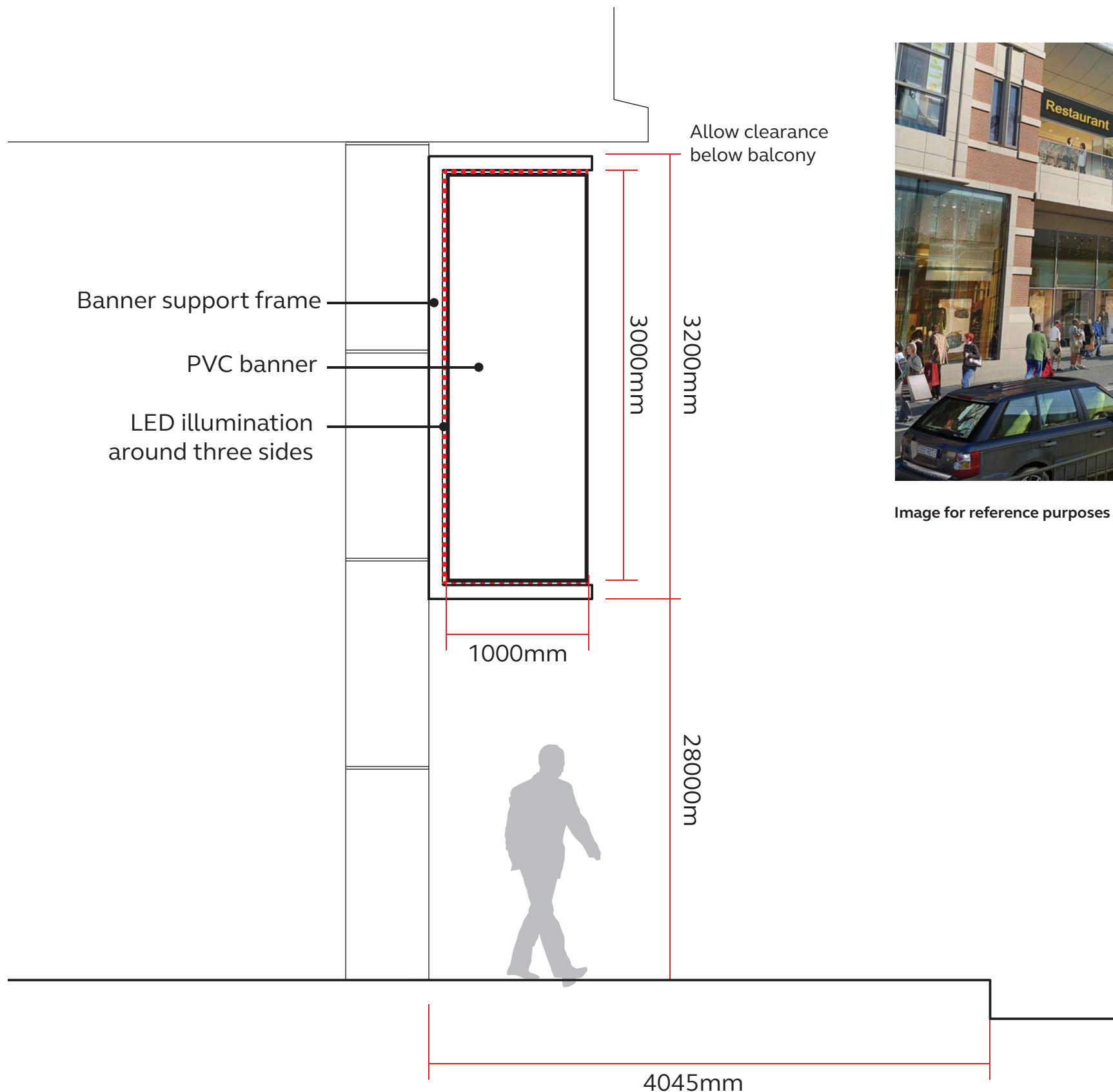


Image for reference purposes



BN_01-BN_05. Banner signs

1000 x 3000mm approx.
Quantity: x5 off

Double sided banner signs from external grade high-quality banner PVC. Banners secured to existing columns with appropriate fixings to satisfy wind-loading requirements.

Banner signs to be illuminated via white LED lights mounted on banner holding structure. Illumination to wash three perimeters of each banners.

LED Illumination. 240 V 13amp power required at location.

All illumination will be static and no more than 540 candelas per square metre.

Contractor to advise on best lighting specification and technique.

Please note logos shown are for illustration purposes only. Graphic content of banners will vary.

GENERAL NOTES

All dimensions given are for estimating purpose only. Contractor to take exact survey dimensions prior to commencement of work.

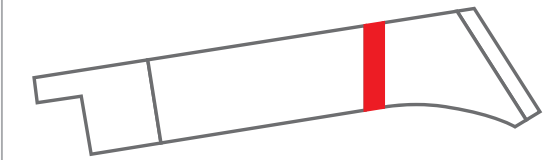
The sign manufacturer must produce manufacturing drawings and schedules to be submitted to Air Design for content approval prior to manufacture.

Contractor to advise on best installation methods and foundations.

PLANNING

Project: O2 Finchley Road
Client: Land Securities
Drawing No: N/A
Drawing Title: Finchley Road – section
Scale: N/A
Date: 20/04/2016

Rear (Car park) Location visual



BN_06-BN_09. Banner signs

1000 x 3000mm approx.
Quantity: x4 off

Double sided banner signs from external grade high-quality banner PVC. Banners secured to existing columns with appropriate fixings to satisfy wind-loading requirements.

Banner signs to be illuminated via external light units. Illumination to wash outer face of each banner sign.

LED Illumination. 240 V 13amp power required at location.

All illumination will be static and no more than 540 candelas per square metre.

Contractor to advise on best lighting specification and technique.

Please note logos shown are for illustration purposes only. Graphic content of banners will vary.

GENERAL NOTES

All dimensions given are for estimating purpose only. Contractor to take exact survey dimensions prior to commencement of work.

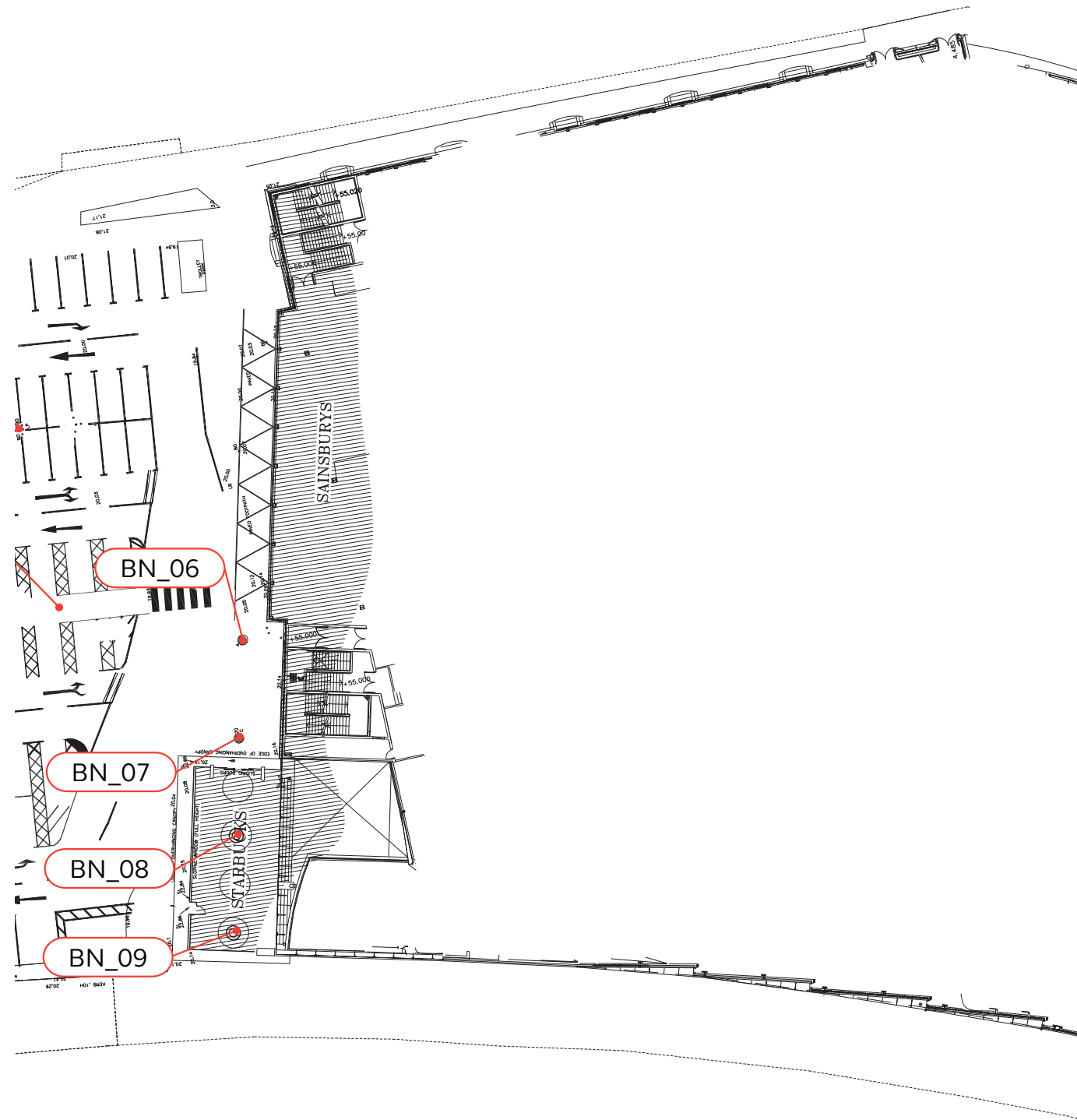
The sign manufacturer must produce manufacturing drawings and schedules to be submitted to Air Design for content approval prior to manufacture.

Contractor to advise on best installation methods and foundations.

PLANNING

Project: O2 Finchley Road
Client: Land Securities
Drawing No: N/A
Drawing Title: Car park - Before / proposed
Scale: N/A
Date: 20/04/2016

Rear (Car park) Sign location



BN_06-BN_09. Banner signs

1000 x 3000mm approx.
Quantity: x4 off

Double sided banner signs from external grade high-quality banner PVC. Banners secured to existing columns with appropriate fixings to satisfy wind-loading requirements.

Banner signs to be illuminated via external light units. Illumination to wash outer face of each banner sign.

LED Illumination. 240 V 13amp power required at location.

All illumination will be static and no more than 540 candelas per square metre.

Contractor to advise on best lighting specification and technique.

Please note logos shown are for illustration purposes only. Graphic content of banners will vary.

GENERAL NOTES

All dimensions given are for estimating purpose only. Contractor to take exact survey dimensions prior to commencement of work.

The sign manufacturer must produce manufacturing drawings and schedules to be submitted to Air Design for content approval prior to manufacture.

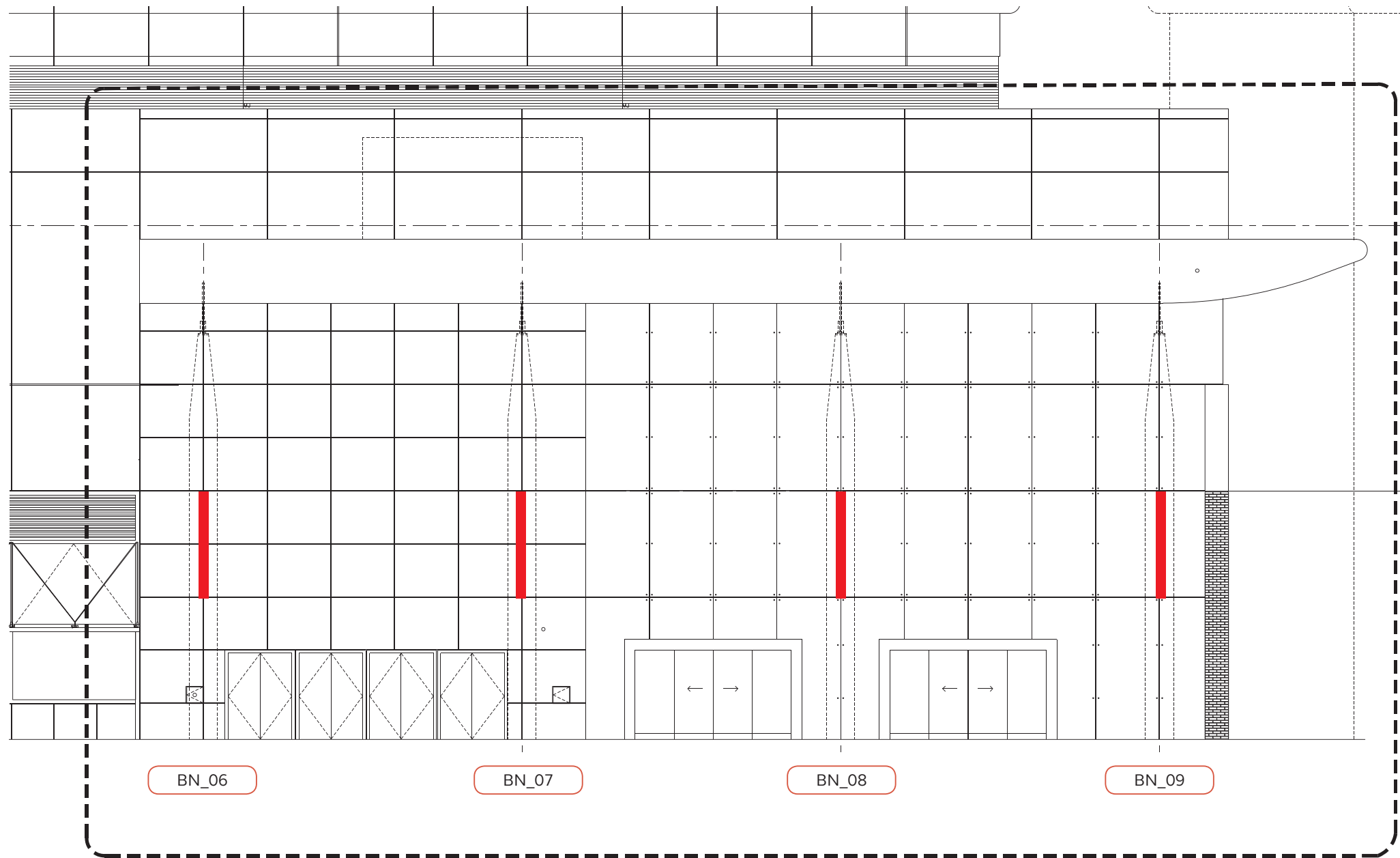
Contractor to advise on best installation methods and foundations.

PLANNING

Project: O2 Finchley Road
Client: Land Securities
Drawing No: N/A
Drawing Title: Car park - plan
Scale: N/A
Date: 20/04/2016

Rear (Car park) – elevation

Sign location



BN_06-BN_09. Banner signs

1000 x 3000mm approx.
Quantity: x4 off

Double sided banner signs from external grade high-quality banner PVC. Banners secured to existing columns with appropriate fixings to satisfy wind-loading requirements.

Banner signs to be illuminated via external light units. Illumination to wash outer face of each banner sign.

LED Illumination. 240 V 13amp power required at location.

All illumination will be static and no more than 540 candelas per square metre.

Contractor to advise on best lighting specification and technique.

Please note logos shown are for illustration purposes only. Graphic content of banners will vary.

GENERAL NOTES

All dimensions given are for estimating purpose only. Contractor to take exact survey dimensions prior to commencement of work.

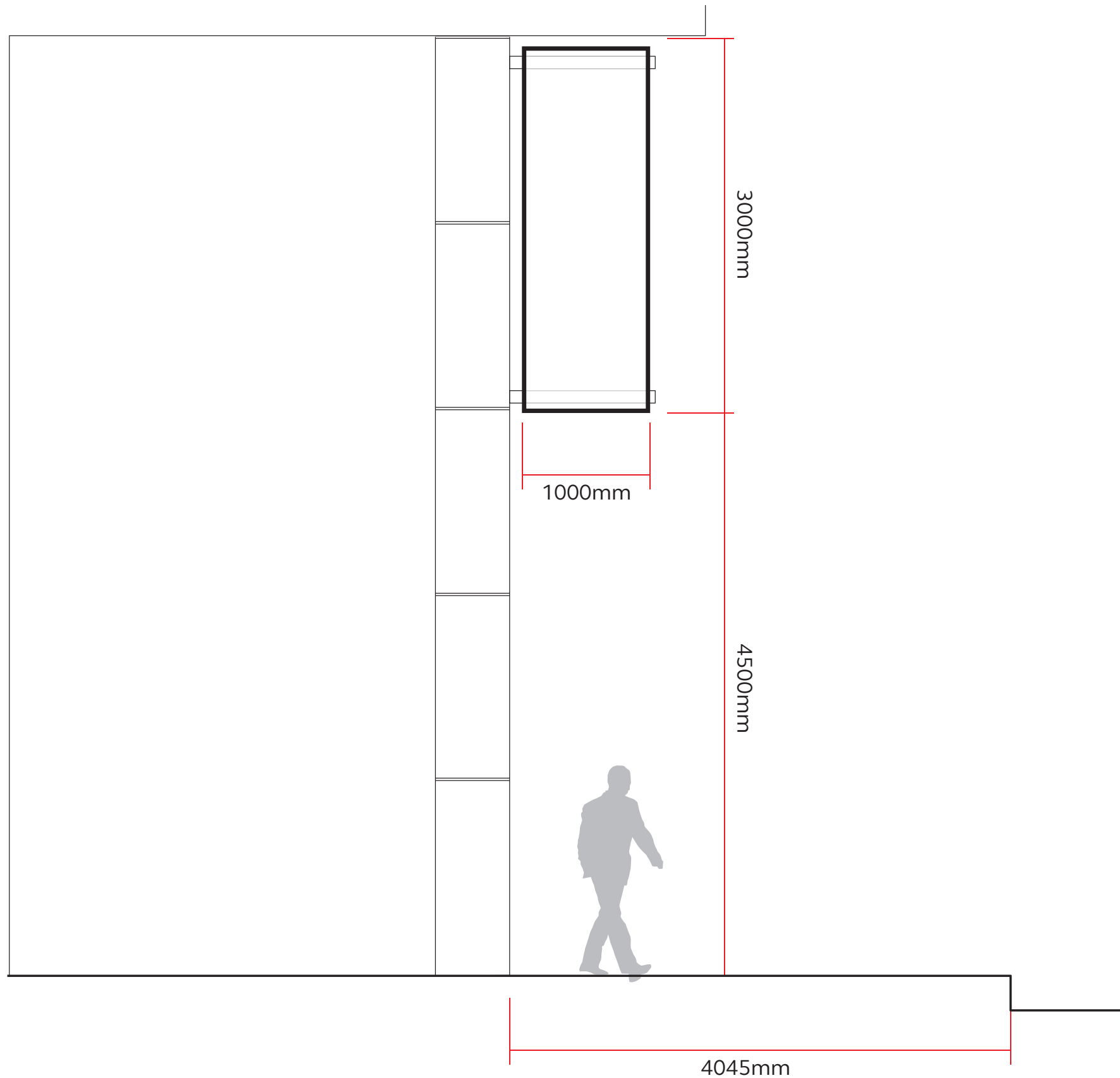
The sign manufacturer must produce manufacturing drawings and schedules to be submitted to Air Design for content approval prior to manufacture.

Contractor to advise on best installation methods and foundations.

PLANNING

Project: O2 Finchley Road
Client: Land Securities
Drawing No: N/A
Drawing Title: Car park – elevation
Scale: 1:100
Date: 20/04/2016

Rear (Car park) – section



BN_06-BN_09. Banner signs

1000 x 3000mm approx.
Quantity: x4 off

Double sided banner signs from external grade high-quality banner PVC. Banners secured to existing columns with appropriate fixings to satisfy wind-loading requirements.

Banner signs to be illuminated via external light units. Illumination to wash outer face of each banner sign.

LED Illumination. 240 V 13amp power required at location.

All illumination will be static and no more than 540 candelas per square metre.

Contractor to advise on best lighting specification and technique.

Please note logos shown are for illustration purposes only. Graphic content of banners will vary.

GENERAL NOTES

All dimensions given are for estimating purpose only. Contractor to take exact survey dimensions prior to commencement of work.

The sign manufacturer must produce manufacturing drawings and schedules to be submitted to Air Design for content approval prior to manufacture.

Contractor to advise on best installation methods and foundations.

PLANNING

Project: O2 Finchley Road
Client: Land Securities
Drawing No: N/A
Drawing Title: Car park – section
Scale: N/A
Date: 20/04/2016

Rear (Car park) Lamp post banners

Location visual



CPB_01-CPB_42. Car park banner signs
500 x 1500mm approx.
Quantity: x42 off

Double sided printed banners on external grade mesh/perforated banner material to ensure appropriate wind-loading. Banners securely fixed with appropriate fixings to existing lamp posts. Contractor/engineer to advise.

Banner content will vary.

Non-illuminated.

Please note logos shown are for illustration purposes only. Graphic content of banners will vary.

GENERAL NOTES

All dimensions given are for estimating purpose only. Contractor to take exact survey dimensions prior to commencement of work.

The sign manufacturer must produce manufacturing drawings and schedules to be submitted to Air Design for content approval prior to manufacture.

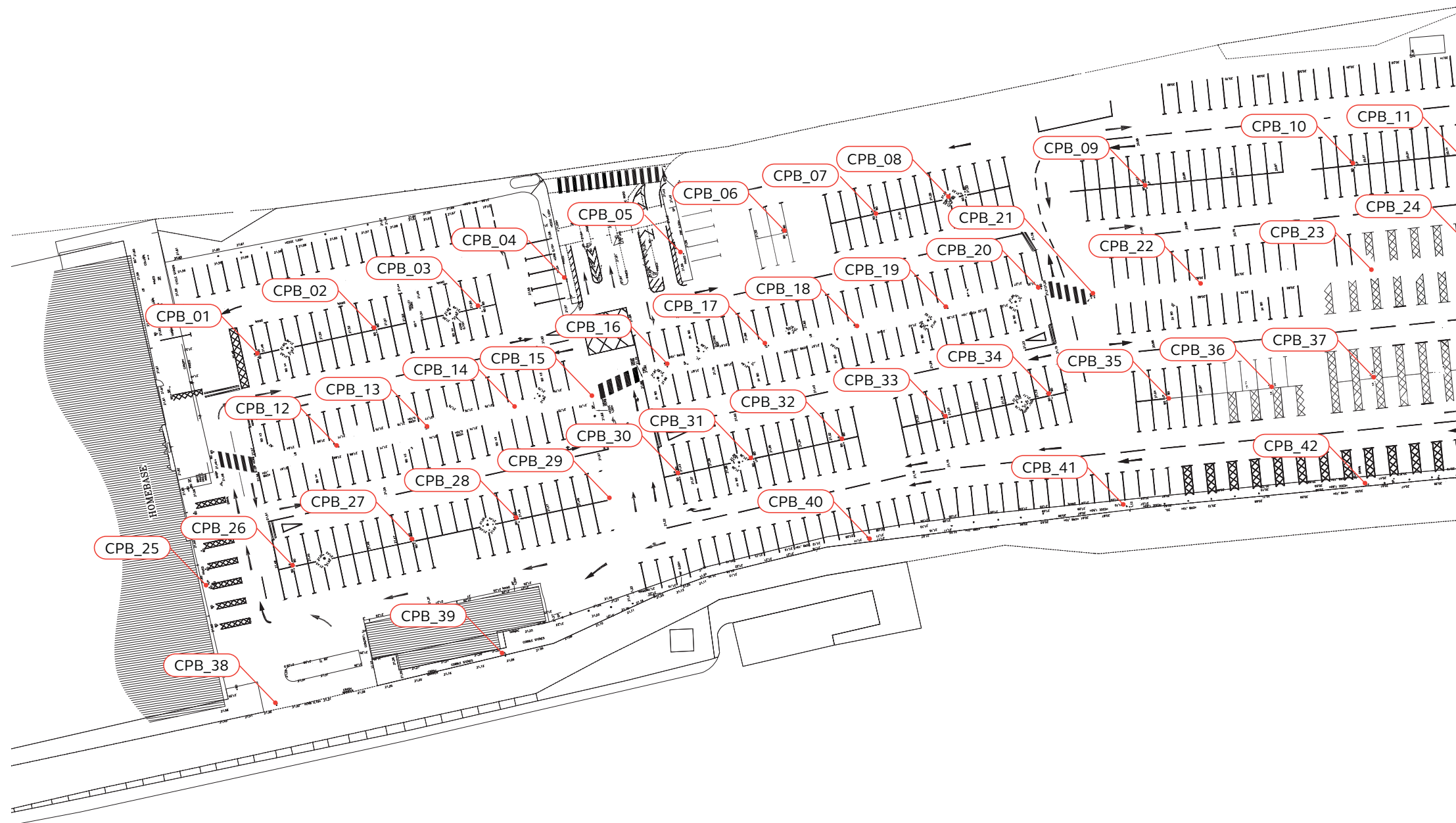
Contractor to advise on best installation methods and foundations.

PLANNING

Project: O2 Finchley Road
Client: Land Securities
Drawing No: N/A
Drawing Title: Lamp post banners – proposed
Scale: N/A
Date: 20/04/2016

Rear (Car park) Lamp post banners

Sign location



CPB_01-CPB_42. Car park banner signs
 500 x 1500mm approx.
 Quantity: x42 off

Double sided printed banners on external grade mesh/perforated banner material to ensure appropriate wind-loading. Banners securely fixed with appropriate fixings to existing lamp posts. Contractor/engineer to advise.

Banner content will vary.

Non-illuminated.

GENERAL NOTES

All dimensions given are for estimating purpose only. Contractor to take exact survey dimensions prior to commencement of work.

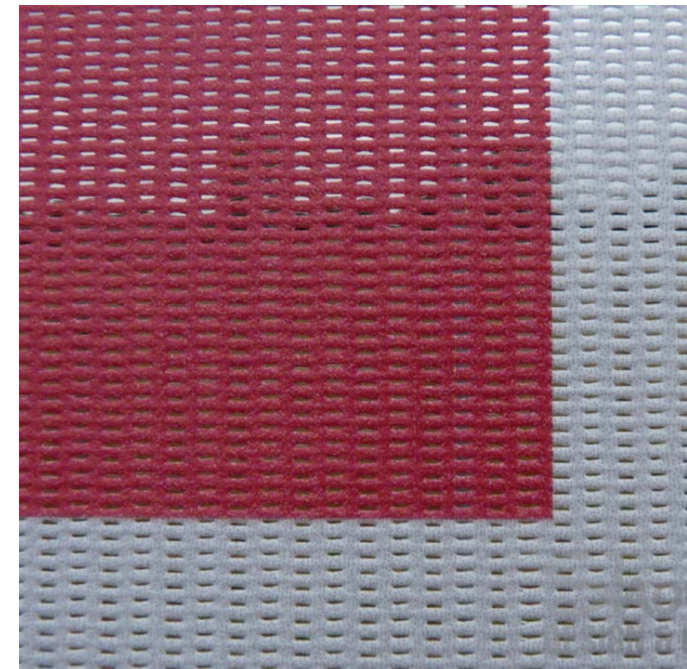
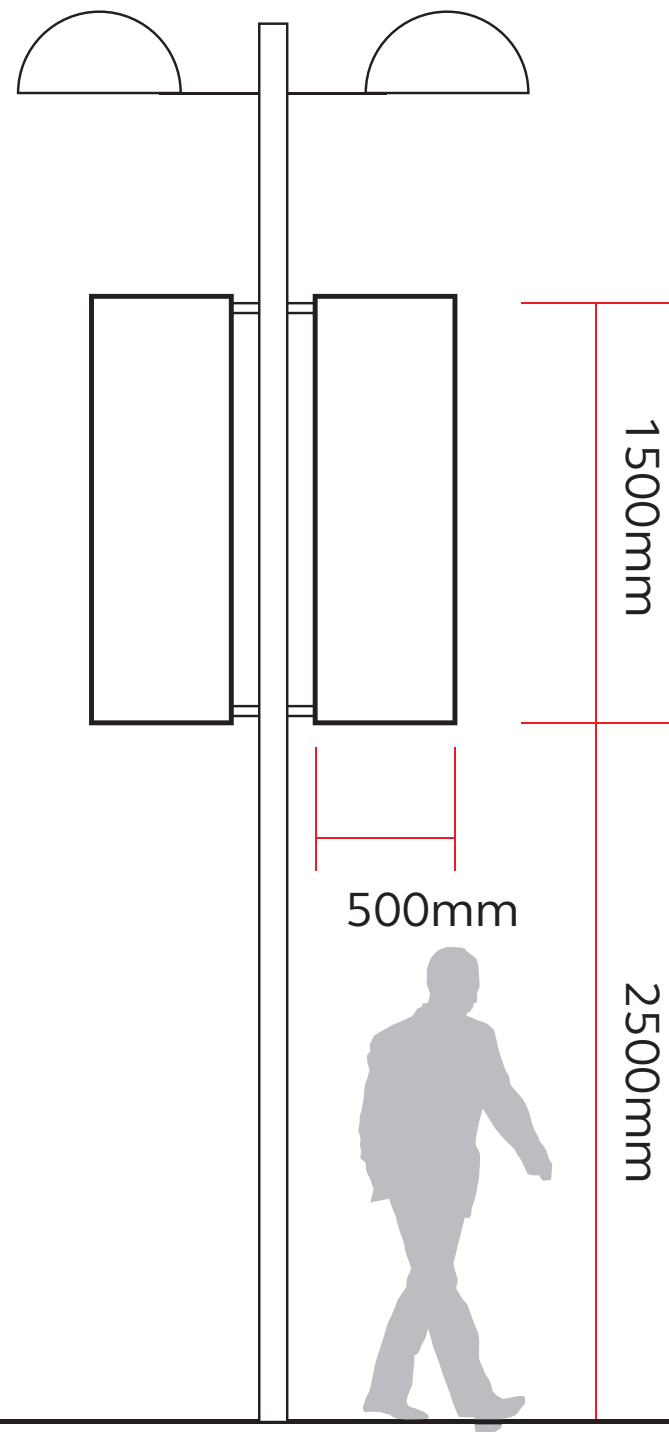
The sign manufacturer must produce manufacturing drawings and schedules to be submitted to Air Design for content approval prior to manufacture.

Contractor to advise on best installation methods and foundations.

PLANNING

Project: O2 Finchley Road
 Client: Land Securities
 Drawing No: N/A
 Drawing Title: Lamp post banners – plan
 Scale: N/A
 Date: 20/04/2016

Rear (Car park) Lamp post banners – section



Mesh banner material allows air to flow through, reducing wind load by up to 50%



CPB_01-CPB_42. Car park banner signs
500 x 1500mm approx.
Quantity: x42 off

Double sided printed banners on external grade mesh/perforated banner material to ensure appropriate wind-loading. Banners securely fixed with appropriate fixings to existing lamp posts. Contractor/engineer to advise.

Banner content will vary.

Non-illuminated.

GENERAL NOTES

All dimensions given are for estimating purpose only. Contractor to take exact survey dimensions prior to commencement of work.

The sign manufacturer must produce manufacturing drawings and schedules to be submitted to Air Design for content approval prior to manufacture.

Contractor to advise on best installation methods and foundations.

PLANNING

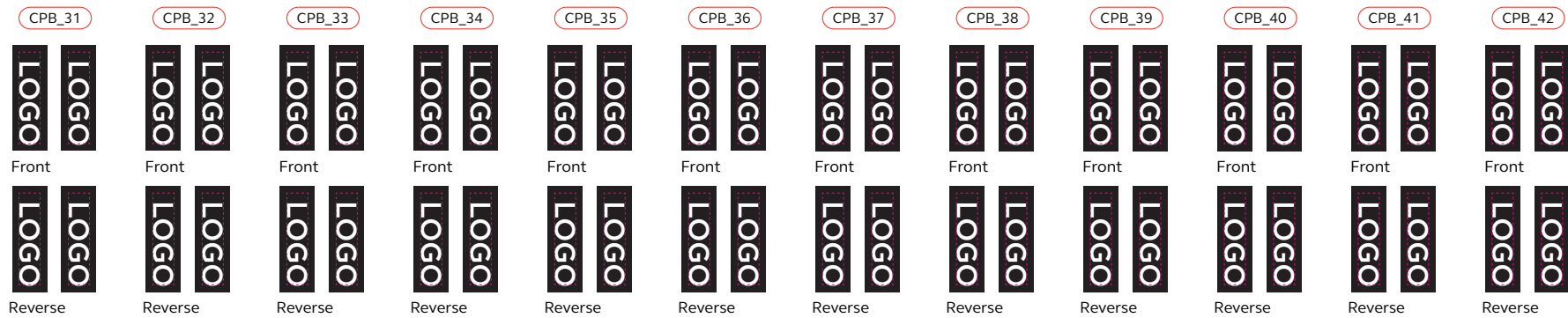
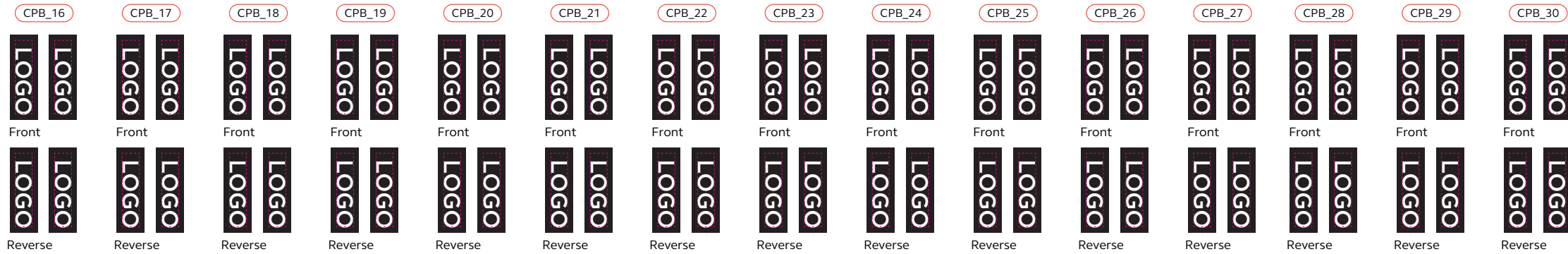
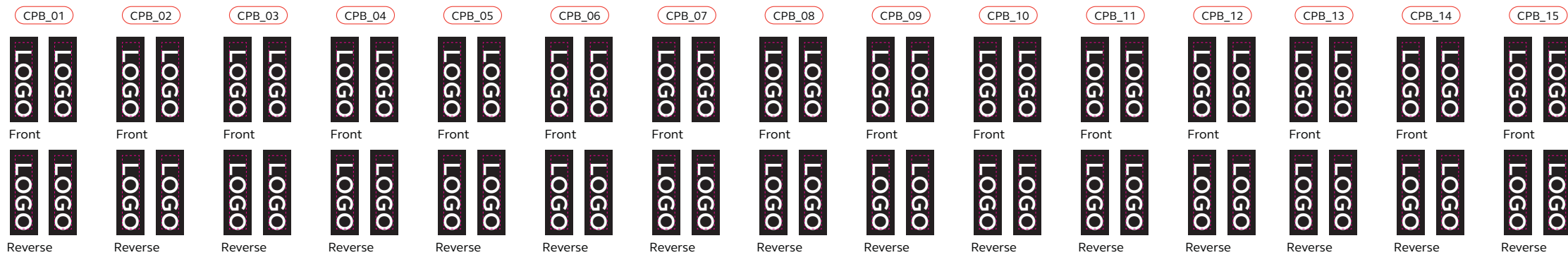
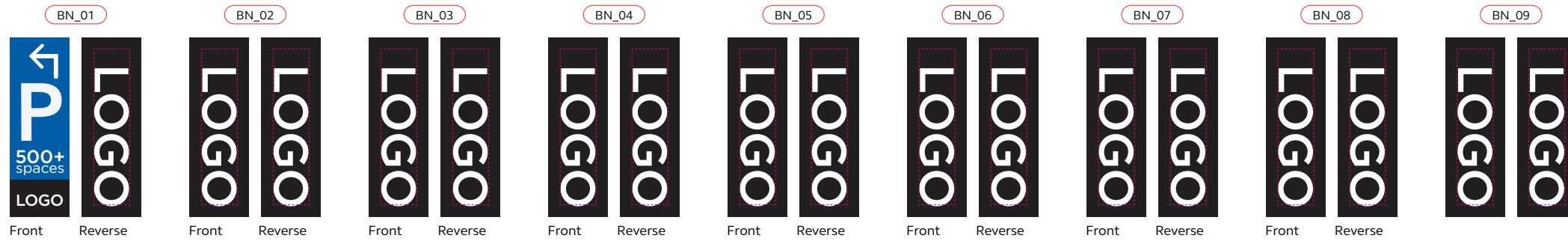
Project: O2 Finchley Road
Client: Land Securities
Drawing No: N/A
Drawing Title: Lamp post banners – section
Scale: 1:50
Date: 20/04/2016

External banners

Quantities

Sign Type	Dimensions	Sign Reference	Description	Quantity
Banner Sign – Finchley Road Banner type 1	1000mm x 3000mm	BN_01 – BN_05	<p>Double-sided banner signs from external grade high-quality banner PVC. Banners secured to existing columns with appropriate fixings to satisfy wind-loading requirements.</p> <p>Banner signs to be illuminated via white LED lights mounted on banner holding structure. Illumination to wash three perimeters of each banners.</p> <p>LED Illumination. 240 V 13amp power required at location.</p> <p>All illumination will be static and no more than 540 candelas per square metre.</p> <p>Banner content will vary.</p>	5
Banner Sign – Rear Banner type 1	1000mm x 3000mm	BN_06 - BN_09	<p>Double-sided banner signs from external grade high-quality banner PVC. Banners secured to existing columns with appropriate fixings to satisfy wind-loading requirements.</p> <p>Banner signs to be illuminated via external light units. Illumination to wash outer face of each banner sign.</p> <p>LED Illumination. 240 V 13amp power required at location.</p> <p>All illumination will be static and no more than 540 candelas per square metre.</p> <p>Banner content will vary.</p>	4
Car Park Banner sign Banner type 2	500mm x 1500mm	CPB_01 - CPB_42	<p>Double -sided printed banners on external grade mesh/perforated banner material to ensure appropriate wind-loading. Banners securely fixed with appropriate fixings to existing lamp posts. Contractor/engineer to advise.</p> <p>Banner content will vary.</p>	42

Banners Artwork (content to be confirmed)



Banner sign content

CONTENT TO BE CONFIRMED.

Artwork for banners to be supplied.

GENERAL NOTES

All dimensions given are for estimating purpose only. Contractor to take exact survey dimensions prior to commencement of work.

The sign manufacturer must produce manufacturing drawings and schedules to be submitted to Air Design for content approval prior to manufacture.

Contractor to advise on best installation methods and foundations.

PLANNING

Project: O2 Finchley Road
 Client: Land Securities
 Drawing No: N/A
 Drawing Title: Banners – artwork
 Scale: N/A
 Date: 20/04/2016

Front (Finchley Road) – Entrance Signs



FW_01. Front entrance wall

Max 2000 mm wide. Height determined by width of the logo.
Quantity: x6 off

Built up individual letters with internally illuminated opal acrylic faces. Vinyl applied to acrylic face to be coloured to match tenant branding.

LED Illumination. 240 V 13amp power required at location.

All illumination will be static and no more than 540 candelas per square metre.

Contractor to advise on best lighting specification and technique.

Please note logos shown are for illustration purposes only.

GENERAL NOTES

All dimensions given are for estimating purpose only. Contractor to take exact survey dimensions prior to commencement of work.

The sign manufacturer must produce manufacturing drawings and schedules to be submitted to Air Design for content approval prior to manufacture.

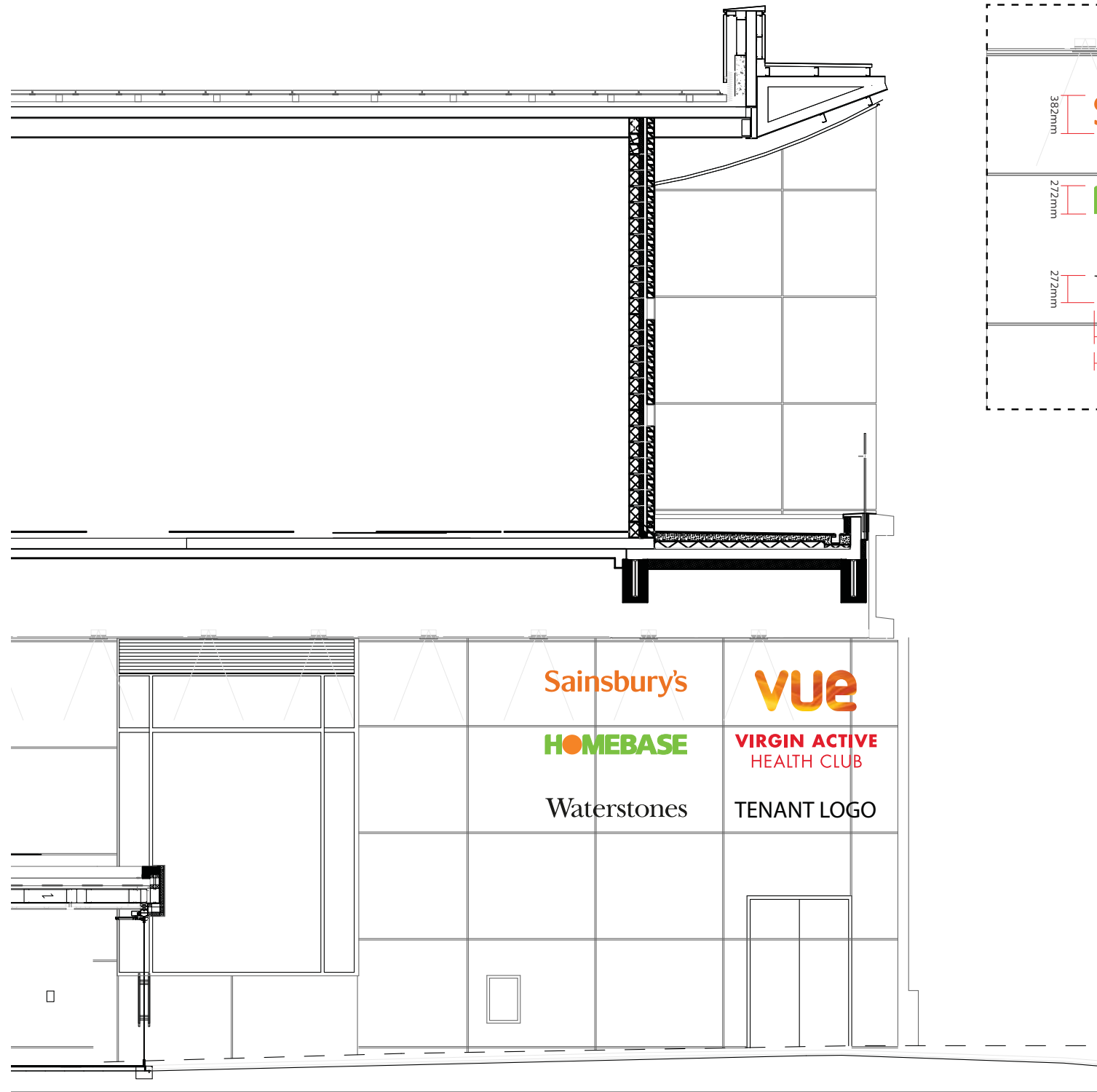
Contractor to advise on best installation methods and foundations.

PLANNING

Project: O2 Finchley Road
Client: Land Securities
Drawing No: N/A
Drawing Title:
Scale: N/A
Date: 20/04/2016

Front (Finchley Road) – Entrance Signs

Sign location and description



FW_01. Front entrance wall

Max 2000 mm wide. Height determined by width of the logo.
Quantity: x6 off

Built up individual letters with Internally illuminated opal acrylic faces. Vinyl applied to acrylic face to be coloured to match tenant branding.

LED Illumination. 240 V 13amp power required at location.

All illumination will be static and no more than 540 candelas per square metre.

Contractor to advise on best lighting specification and technique.

Please note logos shown are for illustration purposes only.

GENERAL NOTES

All dimensions given are for estimating purpose only. Contractor to take exact survey dimensions prior to commencement of work.

The sign manufacturer must produce manufacturing drawings and schedules to be submitted to Air Design for content approval prior to manufacture.

Contractor to advise on best installation methods and foundations.

PLANNING

Project: O2 Finchley Road
Client: Land Securities
Drawing No: N/A
Drawing Title:
Scale: N/A
Date: 20/04/2016