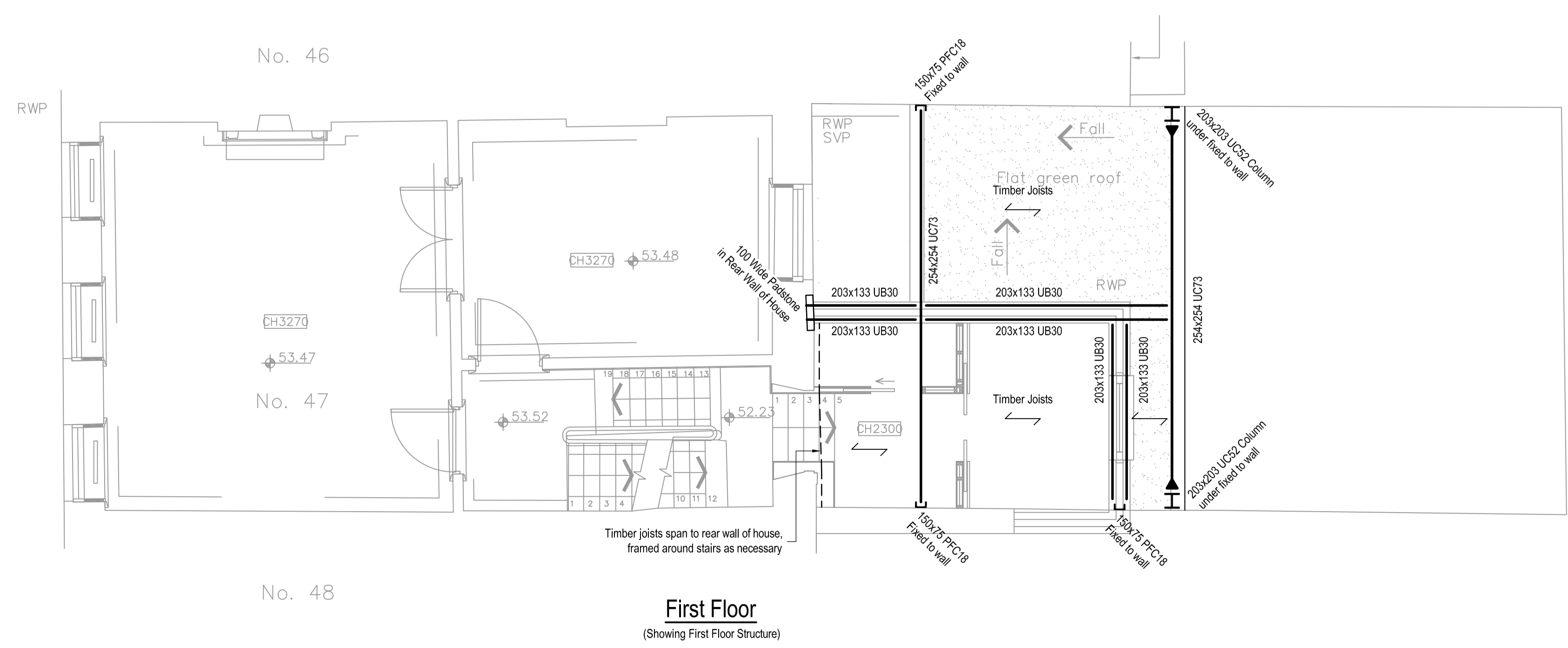
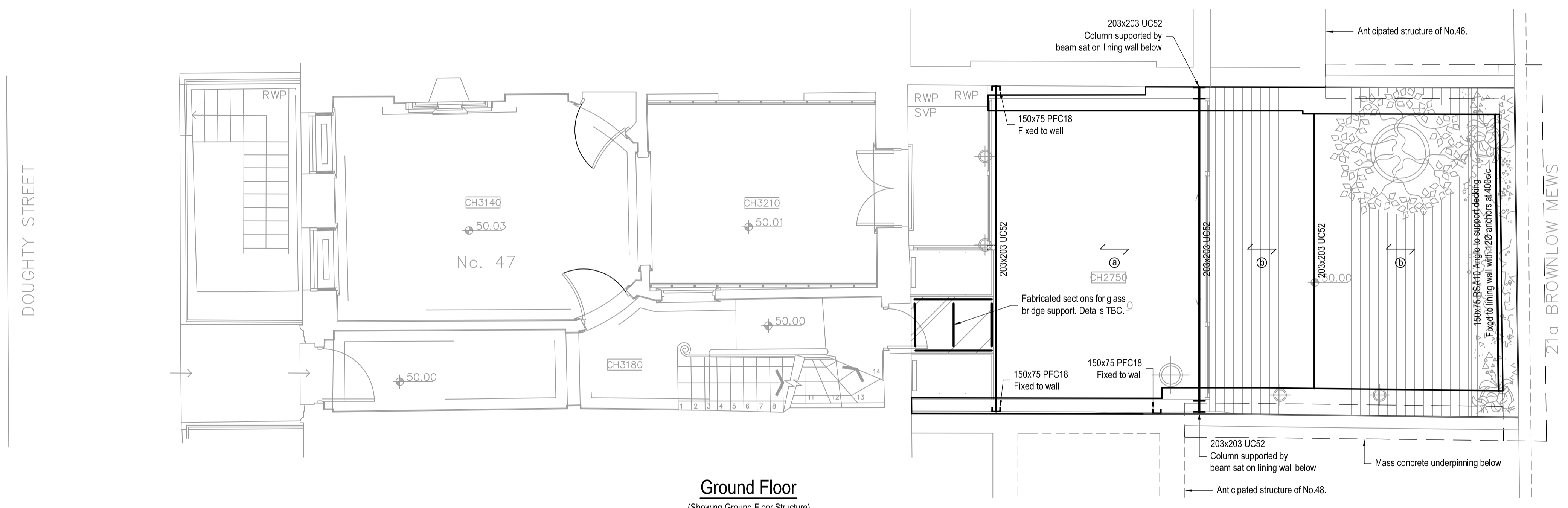
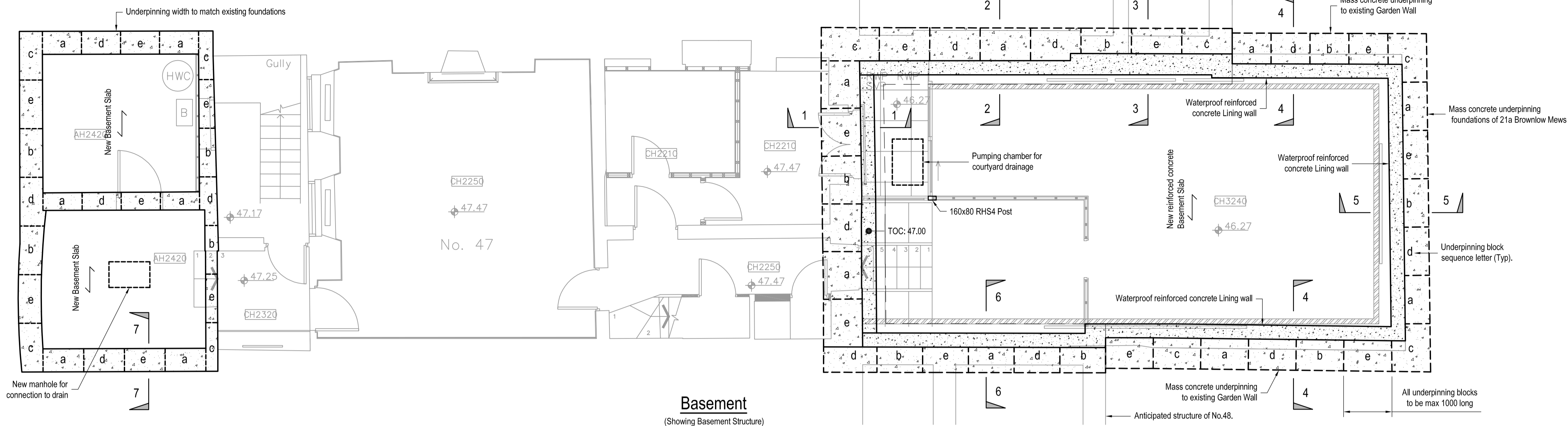


INFORMATION WITHIN THIS DRAWING IS NOT NECESSARILY PRODUCED TO SCALE. ALWAYS USE FIGURED DIMENSIONS AND CO-ORDINATES - IF IN DOUBT, ASK.

NOTES

- All dimensions in millimetres unless stated otherwise.
- All levels in metres above Ordnance Datum unless noted otherwise.
- See Drawing 39053/001 for Notes.
- Design is subject to approval by Historic England.
- For underpinning notes refer to drawing 39053/001.
- For proposed construction sequence for basement refer to drawing 001.



- Ⓐ Timber Joists: 200x50 Grade C16 @400c/c or similar approved
- Ⓑ Composite concrete slab between steel beams refer to details

Timber Joists: 200x50 Grade C16 at 400c/c or similar approved

D	Ground floor steel plan amended where shown	POH	NB	07.06.16
C	Ground floor steel plan amended where shown	POH	NB	27.05.16
B	Issued for planning	POH	NB	13.05.16
A	First Issue	POH	NB	04.05.16
REV	DESCRIPTION	SIG	CHK	DATE

TG STUDIO  
47 DOUGHTY STREET  
LONDON

BASEMENT, GROUND  
& FIRST FLOOR PLANS

**Eastwood & Partners**  
CONSULTING ENGINEERS

Principle House  
121-123 Fleet Road  
Fleet, Hampshire  
GU51 3PD  
Tel 01252 360 580  
Fax 01252 360 581

mail@eastwoodandpartners.com  
www.eastwoodandpartners.com

SCALE WHEN PLOTTED AT A1		DRAWING STATUS	
1:50		TENDER	
DRAWN	CHECKED	DATE	DRAWING NUMBER
POH	NB	04.05.2016	39053/005
REV			D