



THE CLOISTER

NEAL STREET, COVENT GARDEN

£30,000 p.a.



The Cloister

106 Great Portland Street, London, W1W 6PF
T. +44 (0)20 7436 6210 F. +44 (0)20 7436 7261
E. info@thecloister.co.uk W. www.thecloister.co.uk
Head Office, 64 Knightsbridge, London, SW1X 7JF



NEAL STREET, COVENT GARDEN

£30,000 p.a.

Amazing commercial property on the first floor of this well looked after building. The building has a lift and common parts are well maintained, the space is approx. 55 sqm with excellent views to the front on Neal Street and the rear.

Flexible lease terms are available subject to agreement and contract.

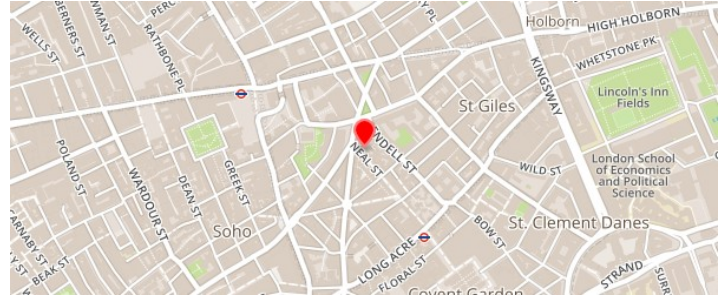
Viewing by the cloister.

LOCAL AMENITIES:

The property is located in Covent Garden which has fantastic amenities and good connections to all parts of London. This property is also close to the amenities of Leicester Square, Holborn and Strand; which has a good amount of shops, bars and restaurants.

LOCAL TRANSPORT LINKS:

This property is situated within walking distance to Tottenham Court Road Underground Station (Northern and Central lines) and Leicester Square Underground Station (Northern and Piccadilly lines)



The Cloister

106 Great Portland Street, London, W1W 6PF
T. +44 (0)20 7436 6210 F. +44 (0)20 7436 7261
E. info@thecloister.co.uk W. www.thecloister.co.uk
Head Office, 64 Knightsbridge, London, SW1X 7JF



NEAL STREET, COVENT GARDEN

£30,000 p.a.

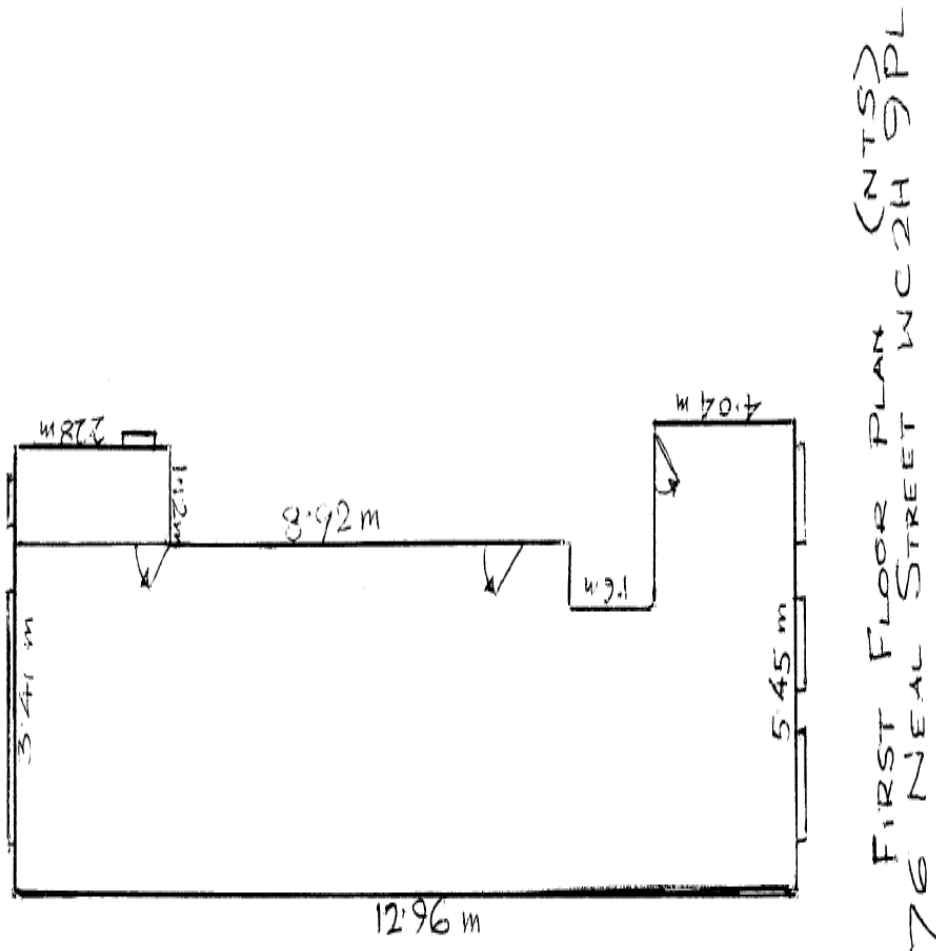
The Cloister

106 Great Portland Street, London, W1W 6PF
T. +44 (0)20 7436 6210 F. +44 (0)20 7436 7261
E. info@thecloister.co.uk W. www.thecloister.co.uk
Head Office, 64 Knightsbridge, London, SW1X 7JF



NEAL STREET, COVENT GARDEN

£30,000 p.a.



Important Notices:

Particulars: These particulars are not an offer or contract, nor part of one. You should not rely on statements by The Cloister in the particulars or by word of mouth or in writing ("information") as being factually accurate about the property, its condition or its value. Neither The Cloister nor any joint agent has any authority to make any representations about the property, and accordingly any information given is entirely without responsibility on the part of the agents, seller(s), lessor(s) or landlord(s). Any areas, measurements or distances are approximate. The text, photographs and plans are for guidance only and are not necessarily comprehensive. Regulations etc: Any reference to alterations to, or use of, any part of the property does not mean that any necessary planning, building regulations or other consent has been obtained. A buyer, lessee or tenant must find out by inspection or in other ways that these matters have been properly dealt with and that all information is correct. All items usually known as tenant's fixtures and fittings whether mentioned or not in these particulars are excluded from the sale or tenancy but certain items may be available by separate negotiation.

Copy Right: The copyright of all details, photographs and floorplans remain exclusive to The Cloister.

The Cloister

106 Great Portland Street, London, W1W 6PF
T. +44 (0)20 7436 6210 F. +44 (0)20 7436 7261
E. info@thecloister.co.uk W. www.thecloister.co.uk
Head Office, 64 Knightsbridge, London, SW1X 7JF

