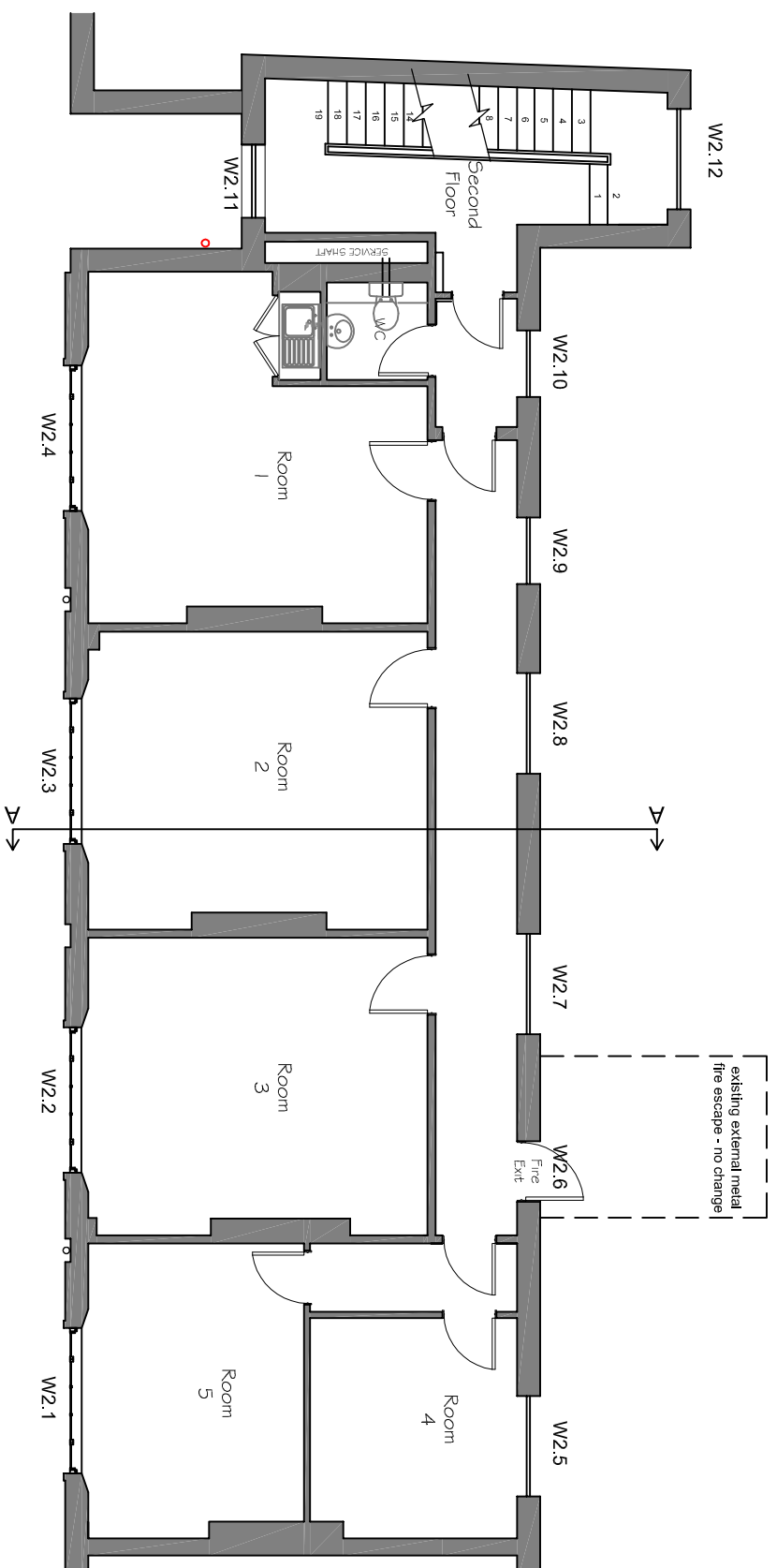


NOTES:

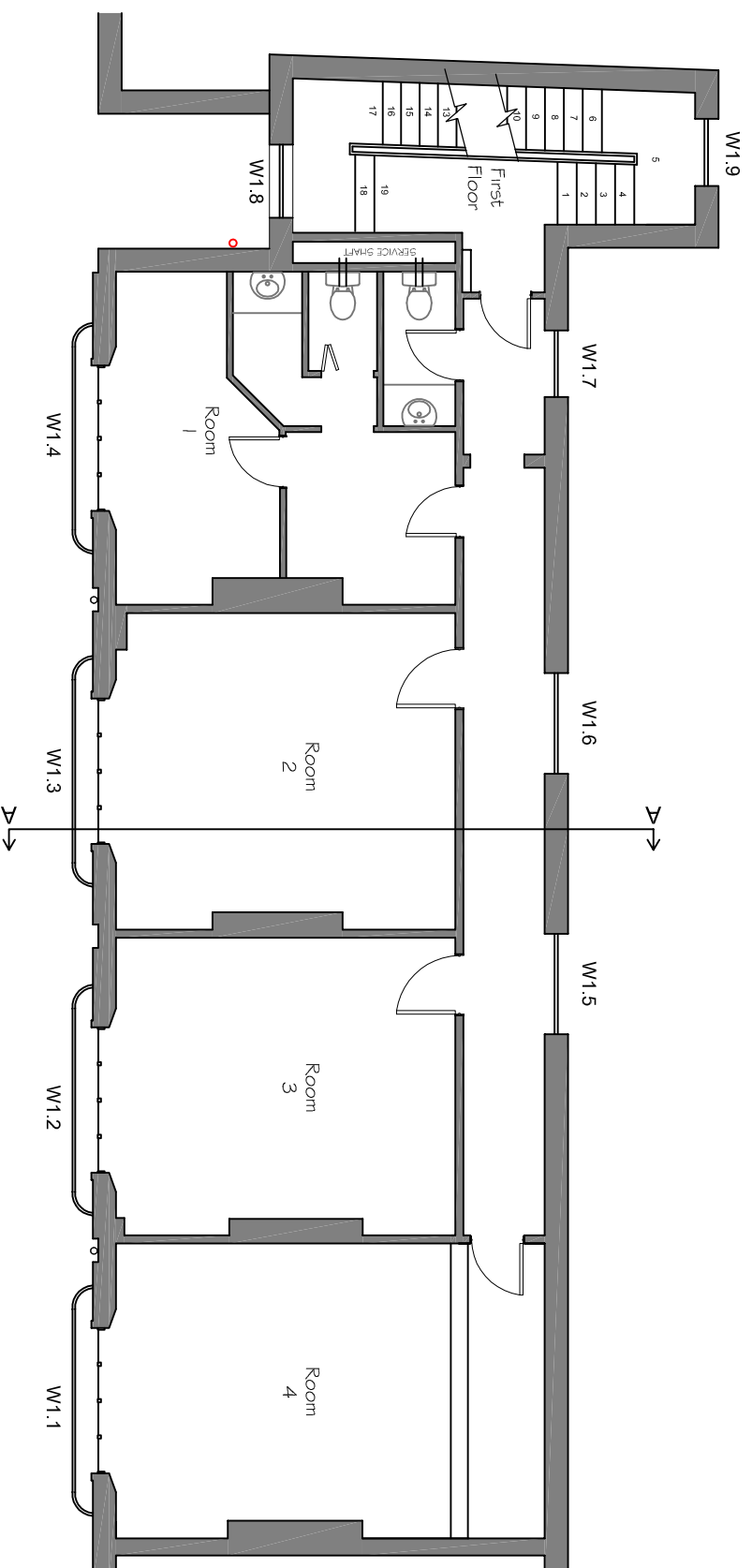
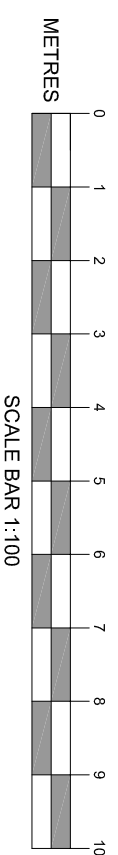
This drawing has been prepared for the purpose of Planning and/or Building Regulations approval only, and is not to be used for any other purpose. Drawing based on measured survey / OS Plan.

All dimensions to be checked on site and any discrepancy notified to The Martin Ralph Group. Written dimensions are to be used in preference to scaled dimensions.

This drawing is the property of The Martin Ralph Group and must not be reproduced, in part or whole, or deviated from, without their permission.



SECOND FLOOR (1:100)



FIRST FLOOR (1:100)

AMENDMENTS	DATE

CLIENT
ELLIOT LAMB
INSTRUMEL

PROJECT
CONVERSION TO FLATS
1-7 Woburn Walk
London, WC1H 0JJ

DRAWING TITLE
EXISTING FIRST & SECOND
FLOOR PLANS

DATE
02.05.2016

SCALE
1:100 @ A3

DRAWING No.
15/262/21

REVISION



CHARTERED SURVEYORS
ARCHITECTS & ENGINEERS

11 Dragon House
Hussar Court
Brambles Business Park
Farnborough
Hampshire
PO7 7SF

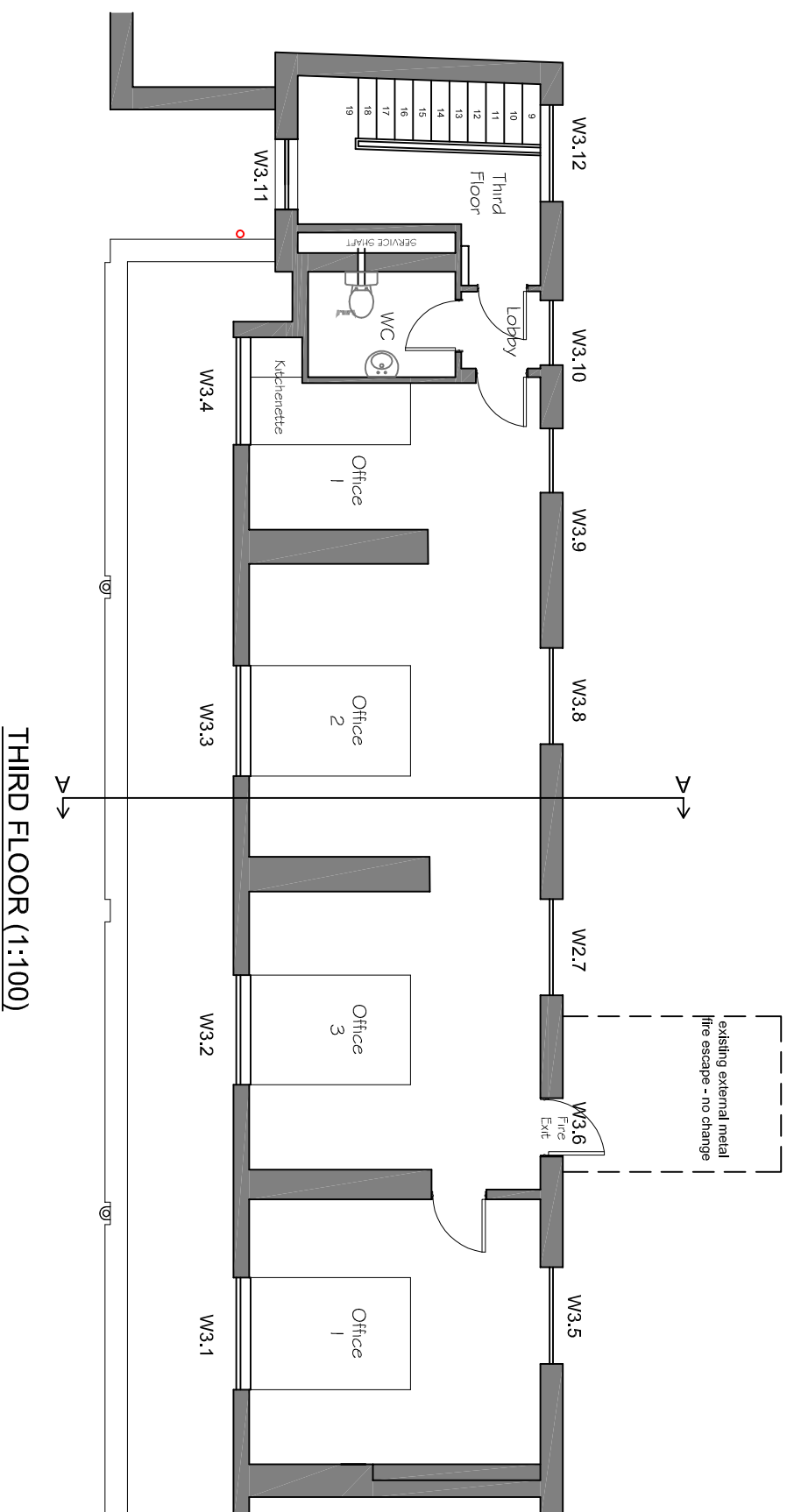
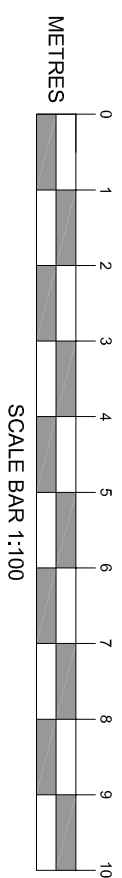
www.martinralph.co.uk
info@martinralph.co.uk
T. 023 9225 7711
F. 023 9225 7712

NOTES:

This drawing has been prepared for the purpose of Planning and/or Building Regulations approval only, and is not to be used for any other purpose. Drawing based on measured survey / OS Plan.

All dimensions to be checked on site and any discrepancy notified to The Martin Ralph Group. Written dimensions are to be used in preference to scaled dimensions.

This drawing is the property of The Martin Ralph Group and must not be reproduced, in part or whole, or deviated from, without their permission.



THIRD FLOOR (1:100)

AMENDMENTS	DATE

CLIENT
ELLIOT LAMB INSTRUMENTEL

PROJECT
CONVERSION TO FLATS
 1-7 Woburn Walk
 London, WC1H 0JJ

DRAWING TITLE
EXISTING THIRD FLOOR PLAN

DATE
 13.05.2016

SCALE
 1:100 @ A3

DRAWING No.
 15/262/22

REVISION

THE **MARTIN RALPH** GROUP
 CHARTERED SURVEYORS ARCHITECTS & ENGINEERS

11 Dragon House
 Hussar Court
 Brambles Business Park
 Portsmouth
 Hampshire
 PO7 7SF

www.martinralph.co.uk
info@martinralph.co.uk

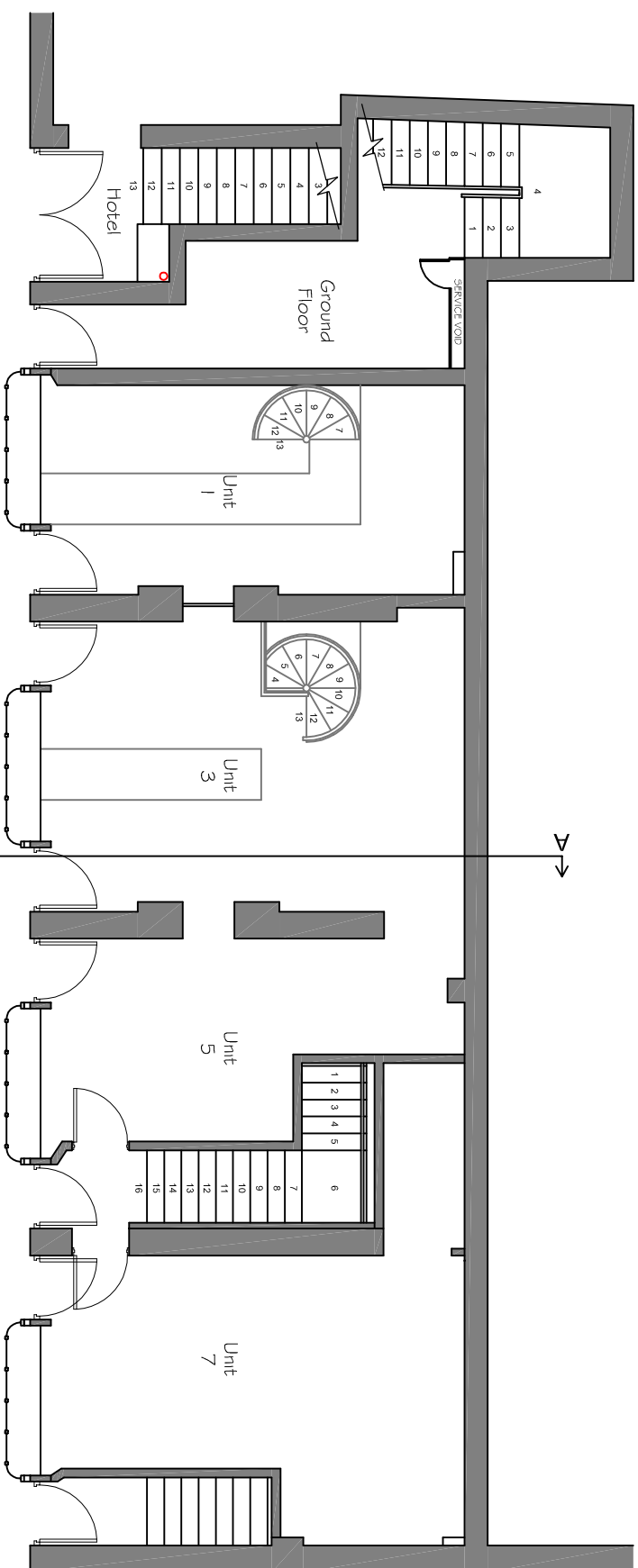
T. 023 9225 7711
F. 023 9225 7712

NOTES:

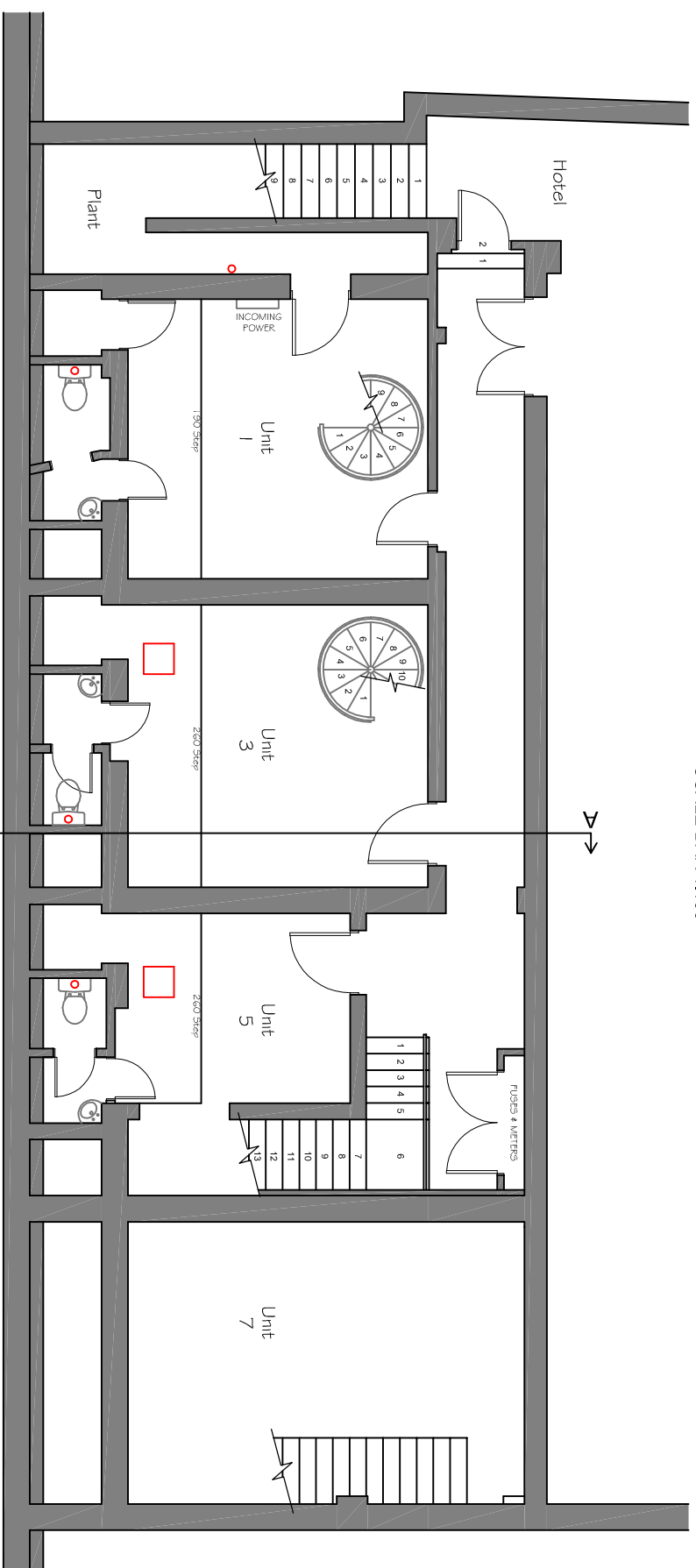
This drawing has been prepared for the purpose of Planning and/or Building Regulations approval only, and is not to be used for any other purpose. Drawing based on measured survey / OS Plan.

All dimensions to be checked on site and any discrepancy notified to The Martin Ralph Group. Written dimensions are to be used in preference to scaled dimensions.

This drawing is the property of The Martin Ralph Group and must not be reproduced, in part or whole, or deviated from, without their permission.



GROUND FLOOR (1:100)



BASEMENT (1:100)

AMENDMENTS	DATE

CLIENT
ELLIOT LAMB
INSTRUMEL

PROJECT
CONVERSION TO FLATS
1-7 Woburn Walk
London, WC1H 0JJ

DRAWING TITLE
**EXISTING BASEMENT
& GROUND FLOOR PLANS**

DATE
02.05.2016

SCALE
1:100 @ A3

DRAWING No.
15/262/20

REVISION



CHARTERED SURVEYORS
ARCHITECTS & ENGINEERS

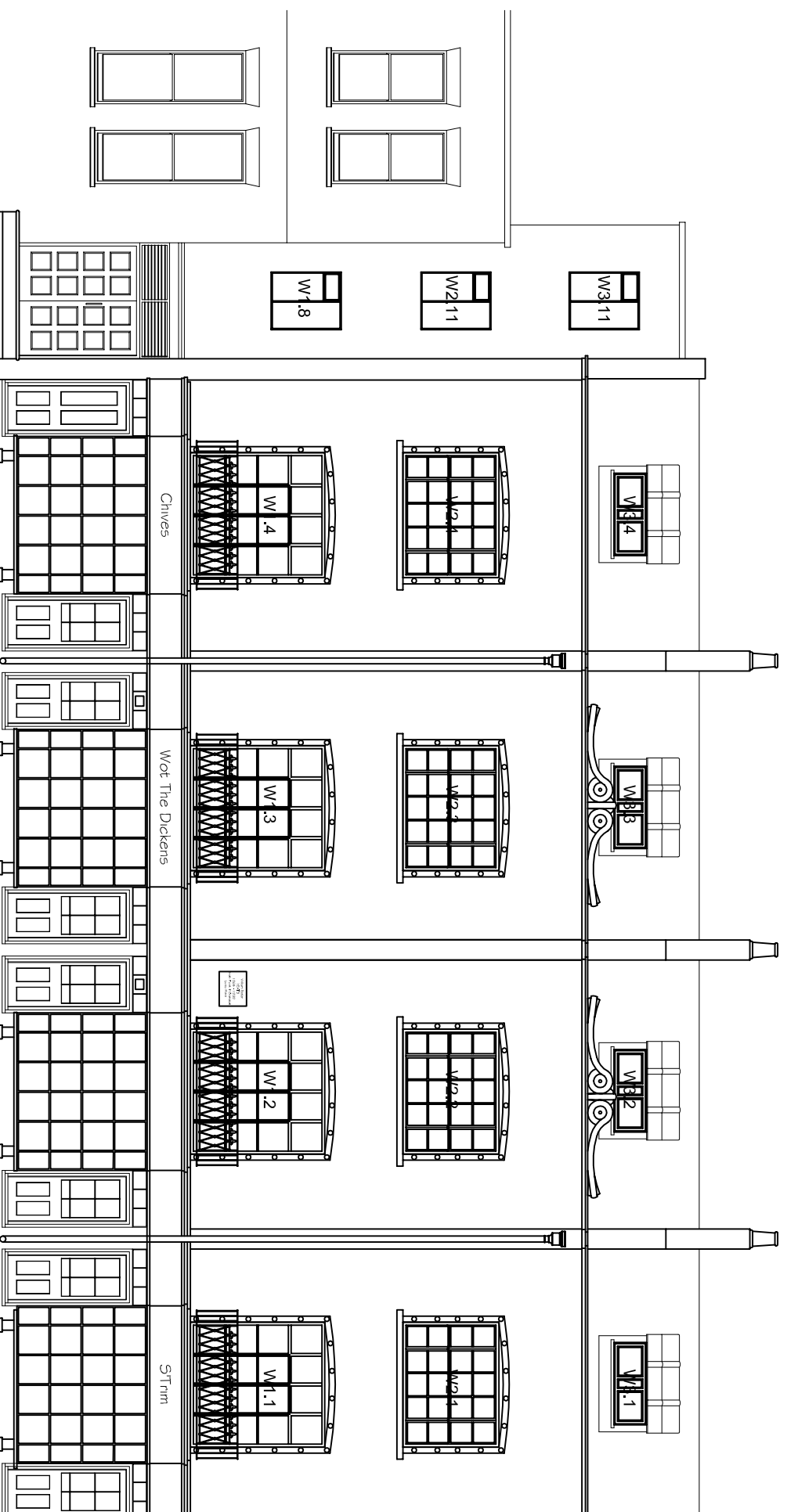


11 Dragon House
Hussar Court
Brambles Business Park
Fortsmead
Hampshire
PO7 7SF

www.martinralph.co.uk
info@martinralph.co.uk
T. 023 9225 7711
F. 023 9225 7712

EXISTING WINDOW SCHEDULE

W1.1	2050x2325mm single glazed timber double doors, sidelights with fanlights
W1.2	2050x2325mm single glazed timber double doors, sidelights with fanlights
W1.3	2050x2325mm single glazed timber double doors, sidelights with fanlights
W1.4	2050x2325mm single glazed timber double doors, sidelights with fanlights
W1.5	1450x260mm single glazed steel window; 2no. fixed lights; 1no. top hung opener
W1.6	1450x260mm single glazed steel window; 2no. fixed lights; 1no. top hung opener
W1.7	1000x260mm single glazed steel window; 1no. fixed light; 1no. top hung opener
W1.8	1000x1200mm single glazed steel window; 1no. fixed light; 1no. top hung opener; 1no. side hung casement
W1.9	1450x900mm single glazed steel window; 1no. fixed light; 1no. top hung opener; 2no. side hung casements
W2.1	1575x1975mm single glazed timber bay window; 3no. sliding sashes
W2.2	1575x1975mm single glazed timber bay window; 3no. sliding sashes
W2.3	1575x1975mm single glazed timber bay window; 3no. sliding sashes
W2.4	1575x1975mm single glazed timber bay window; 3no. sliding sashes
W2.5	1500x900mm single glazed steel window; 1no. fixed light; 1no. top hung opener; 2no. side hung casements
W2.6	900x2100 timber door and frame; 285x365mm vision panel
W2.7	1500x900mm single glazed steel window; 1no. fixed light; 1no. top hung opener; 2no. side hung casements
W2.8	1500x900mm single glazed steel window; 1no. fixed light; 1no. top hung opener; 2no. side hung casements
W2.9	1000x900mm single glazed steel window; 1no. fixed light; 1no. top hung opener; 1no. side hung casement
W2.10	1000x900mm single glazed steel window; 1no. fixed light; 1no. top hung opener; 1no. side hung casement
W2.11	1000x900mm single glazed steel window; 1no. fixed light; 1no. top hung opener; 1no. side hung casement
W2.12	1450x900mm single glazed steel window; 1no. fixed light; 1no. top hung opener; 2no. side hung casements (window concealed)
W3.1	1600x600mm PVCu double glazed window in softwood subframe; 2no. side hung casements
W3.2	1600x600mm PVCu double glazed window in softwood subframe; 2no. side hung casements
W3.3	1600x600mm PVCu double glazed window in softwood subframe; 2no. side hung casements
W3.4	1600x600mm PVCu double glazed window in softwood subframe; 2no. side hung casements
W3.5	1500x900mm single glazed steel window; 1no. fixed light; 1no. top hung opener; 2no. side hung casements
W3.6	900x2100 timber door and frame; 285x365mm vision panel
W3.7	1500x900mm single glazed steel window; 1no. fixed light; 1no. top hung opener; 2no. side hung casements
W3.8	1500x900mm single glazed steel window; 1no. fixed light; 1no. top hung opener; 2no. side hung casements
W3.9	1000x900mm single glazed steel window; 1no. fixed light; 1no. top hung opener; 1no. side hung casement
W3.10	1000x900mm single glazed steel window; 1no. fixed light; 1no. top hung opener; 1no. side hung casement
W3.11	1000x1200mm single glazed steel window; 1no. fixed light; 1no. top hung opener; 1no. side hung casement
W3.12	1450x600mm single glazed steel window with all fixed lights



FRONT ELEVATION (1:100)

NOTES:

This drawing has been prepared for the purpose of Planning and/or Building Regulations approval only, and is not to be used for any other purpose. Drawing based on measured survey / OS Plan.
 All dimensions to be checked on site and any discrepancy/ notified to The Martin Ralph Group. Written dimensions are to be used in preference to scaled dimensions.
 This drawing is the property of The Martin Ralph Group and must not be reproduced, in part or whole, or deviated from, without their permission.

AMENDMENTS	DATE

CLIENT
 ELLIOT LAMB
 INSTRUMEL

PROJECT
CONVERSION TO FLATS
 1-7 Woburn Walk
 London, WC1H 0JJ

DRAWING TITLE
EXISTING FRONT ELEVATION & WINDOW SCHEDULE

DATE
 13.05.2016

SCALE
 1:100 @ A3

DRAWING No.
 15/262/23

REVISION

+ 10725 - FCL

+ 8665 - FFL

+ 6175 - FFL

+ 3045 - FFL



RICS
 CHARTERED SURVEYORS
 ARCHITECTS & ENGINEERS

11 Dragon House
 Hussar Court
 Brambles Business Park
 Portsmouth
 Hampshire
 PO7 7SF
T. 023 9225 7711
F. 023 9225 7712
www.martinralph.co.uk
info@martinralph.co.uk