

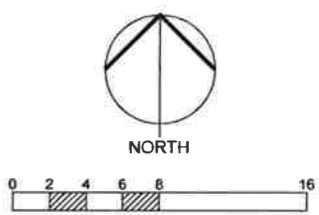
KEY

- Existing tree / hedge retained
- Extra Heavy Standard tree
- Native Hedge with temporary protective fencing
- Native Shrub Planting
- Ornamental shrubs
- Feature shrubs
- Climber
- Short cut grass
- Long grass with wildflower
- Resin Bound paving see Landscape Spec. Q22/177
- Aluminium Edge see Landscape Spec. Q10/160
- Red clay brick laid on edge. see Landscape Spec. Q10/130
- Red clay brick paving with brick on edge trim. see Landscape Spec. Q25/325A
- Marshalls Perfecta paving laid staggered bond with Tegula Sett edge see Landscape Spec. Q25/315A & Q10/150
- Marshalls Perfecta paving laid running bond with Tegula Sett edge see Landscape Spec. Q25/315A & Q10/150
- Marshalls Tegula Sett detail, laid running bond see Landscape Spec. Q25/335A
- Concrete flags to match existing
- Blimac paving to Engineers specification
- Corduroy hazard warning paving see Landscape Spec. Q25/320
- Rotary Dryer see Landscape Spec. Q50/330
- Recessed manhole cover to engineers details
- Door guard rail see Landscape Spec. Q41/112A
- Key clamp handrail see Landscape Spec. Q40/415A
- Illuminated bollard (IB) Wall light (WL) Lamp post (LP) to Lighting Engineers details
- Raised water feature. Refer to Hard Landscape Details and specialist drawings
- Location of sheet pile and facing brickwork to Engineers specification
- Steps surfaced with resin bonded gravel see Landscape Spec. Q22/179
- Handrails provided to both sides of stair flights. see Landscape Spec. Q41/240
- Gate pliers and gates. by Kier
- Traditional featherboard fencing and matching gate see Landscape Spec. Q40/240A & Q40/570
- 1200mm high Railings see Landscape Spec. Q40/345
- Galvanised Cycle Stands see Landscape Spec. Q50/210
- Cycle Shelter, Length: 5m Finish: Galvanized see Landscape Spec. Q50/211
- Summer house see Landscape Spec. Q50/229
- Timber Bench see Landscape Spec. Q50/220
- Timber square table with arm chairs see Landscape Spec. Q50/226 & Q50/230A
- Timber rectangular table 1500 x 900mm with armchairs see Landscape Spec. Q50/226 & Q40/235A
- Hardwood Tree Seat see Landscape Spec. Q50/222
- Gradient change
- Spot level and fall to Engineers Layout

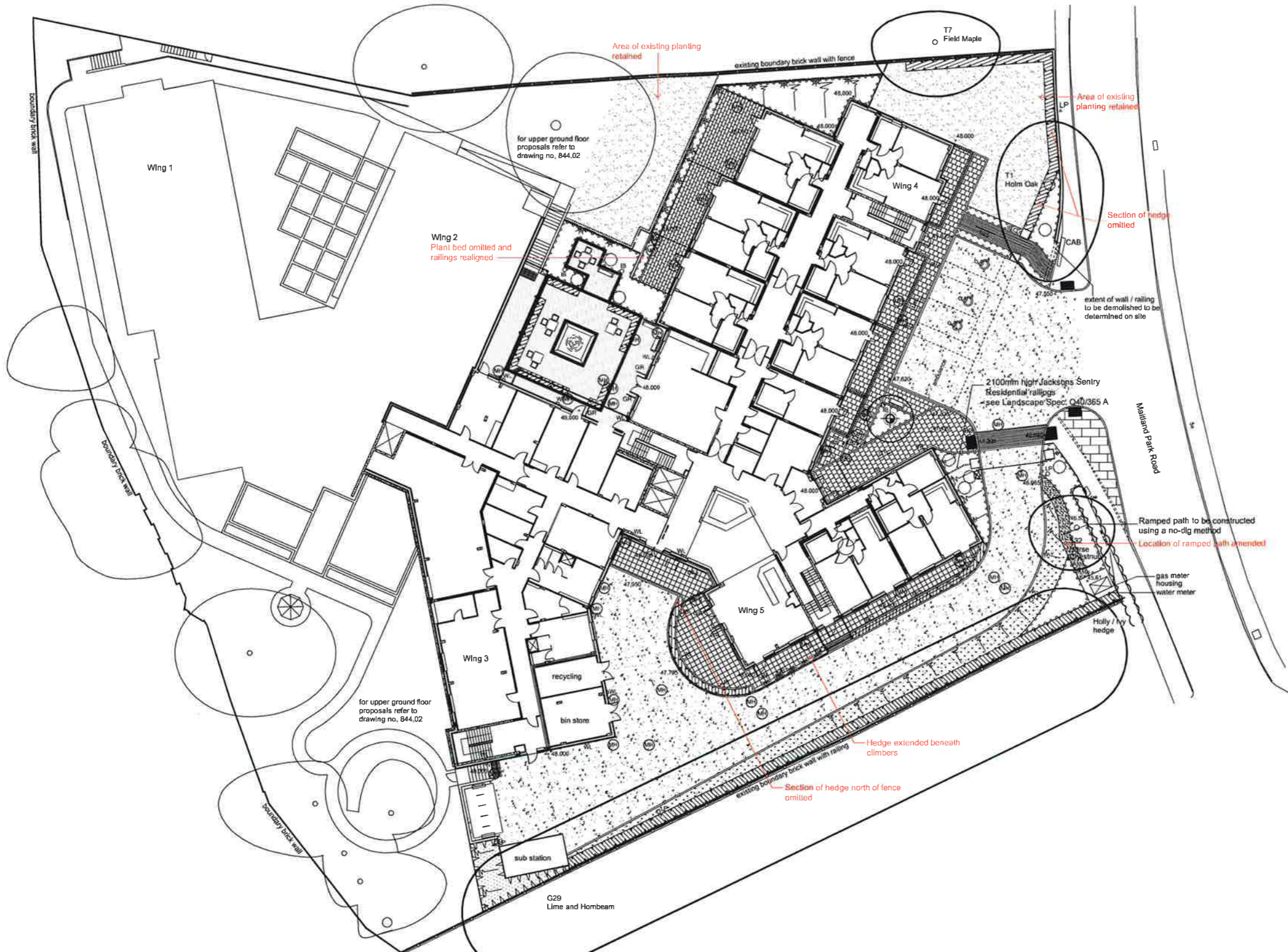
Bat and Bird Boxes
Provide 2 bat boxes and 4 bird boxes as indicated; detailed location to be approved by ecologist.
Bat Boxes manufactured by Schwegler, product ref: Woodcrete 1FF Bat Box. Bird Boxes manufactured by Jacobl Jayne & Co, product ref: Triple Sparrow House.

Notes
1) Drawing based on GMA's Upper Ground Floor Plan, drawing number M101 Rev A
2) Refer to Tully De'Ath Consultants Engineering Layout for full details of levels.
3) Refer to Avoca External Lighting drawing for full lighting details.

AS BUILT DRAWINGS 20/06/13



Camden HOP Maitland Park Road	
Upper Ground Floor Hard and Soft Landscape General Arrangement Sheet 2 of 2	
DRAWN KTD	DATE 04.10.11
CHECKED GB	SCALE 1:200 @ A1
PROJECT No. 844.02 N	
BELL FISCHER BFLA 160 Chiswell Drive, Surbiton Surrey KT5 8L5 020 8380 6477 020 8389 7903 landscapes@bellfisher.co.uk www.bellfisher.co.uk	
LANDSCAPE ARCHITECTS	



KEY

- Existing tree / hedge retained
- Extra Heavy Standard tree
- Native Hedge with temporary protective fencing
- Native Shrub Planting
- Ornamental shrubs
- Feature shrubs
- Climber
- Short cut grass
- Long grass with wildflower
- Resin Bound paving see Landscape Spec. Q22/177
- Aluminium Edge see Landscape Spec. Q10/160
- Red clay brick laid on edge. see Landscape Spec. Q10/130
- Red clay brick paving with brick on edge trim. see Landscape Spec. Q25/325A
- Marshalls Perfecta paving laid staggered bond with Tegula Sett edge see Landscape Spec. Q25/315A & Q10/150
- Marshalls Perfecta paving laid running bond with Tegula Sett edge see Landscape Spec. Q25/315A & Q10/150
- Marshalls Tegula Sett detail, laid running bond see Landscape Spec. Q25/335A
- Concrete flags to match existing
- Bitmac paving to Engineers specification
- Self binding footpath gravel 'Breedon' or equivalent see Landscape Spec. Q23/130
- Door guard rail see Landscape Spec. Q41/112A
- Recessed manhole covers to engineers details
- Road barrier see Landscape Spec. Q41/190
- Key clamp handrail see Landscape Spec. Q40/415A
- Blister tactile paving see Landscape Spec. Q25/320
- Corduroy hazard warning paving see Landscape Spec. Q25/320
- Raised water feature. Refer to Hard Landscape Details and specialist drawings
- Location of sheet pile and facing brickwork to Engineers specification
- Steps surfaced with resin bonded gravel see Landscape Spec. Q22/179
- Gate piers and gates by Kier
- Traditional featherboard fencing and matching gate see Landscape Spec. Q40/240A & Q40/570
- 1200mm high Rallings see Landscape Spec. Q40/345
- Galvanised Cycle Stands see Landscape Spec. Q50/210
- Cycle Shelter, Length: 5m Finish: Galvanized see Landscape Spec. Q50/211
- Summer house see Landscape Spec. Q50/229
- Timber Bench see Landscape Spec. Q50/220
- Timber square table with arm chairs see Landscape Spec. Q50/226 & Q50/230
- Hardwood Tree Seat see Landscape Spec. Q50/222
- Gradient change
- Spot level and fall to Engineers Layout
- Illuminated bollard (IB) Wall light (WL) Lamp post (LP) to Lighting Engineers details

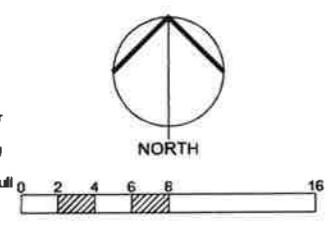
BREEAM Green Guide Ratings:

Paving Material	Element No.	Summary Rating	Total Area	Percentage	Boundary Protection	Summary Rating	Length	Percentage
Asphalt over prepared subbase (bitmac)	830120001	A	666m ²	39.29%	All site boundaries are existing.			
Clay pavers over prepared subbase (Red clay brick paving)	830120002	A	330m ²	19.47%	Conclusion: at least 80% of all external hard landscaping (by area) achieves an A or A+ Green Guide Rating			
Concrete block pavers over prepared subbase (Marshalls Tegula setts)	830120005	A	25m ²	1.47%				
Concrete paving flags over prepared subbase (Marshalls Perfecta slabs)	830120006	A	341m ²	20.12%				
Resin bound gravel (Addagrip Adasett)	-	-	333m ²	19.65%				
TOTAL PAVED AREA			1695m²	100%				

AS BUILT DRAWINGS 20/06/13

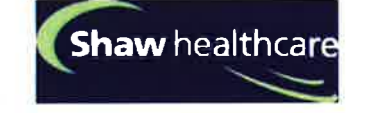
Notes

- 1) Drawing based on GMA's Upper Ground Floor Plan, drawing number M101 Rev A
- 2) Refer to Tully De'Ath Consultants Engineering Layout for full details of levels.
- 3) Refer to Avoca External Lighting drawing for full lighting details.



NO	DATE	BY	CHKD
M	20/06/13		

Scale: 1:200 @ A1



Camden HOP
Maitland Park Road

Ground Floor
Hard and Soft Landscape
General Arrangement
Sheet 1 of 2

DRAWN	DATE	DWG. NO.	REV
KTD	04.10.11		
CHECKED	SCALE	844.01 N	
GB	1:200 @ A1		

BELL FISCHER BFLA
160 Chiltern Drive, Sunningdale, Surrey KT5 8LS
020 8390 8477 020 8399 7903
landscape@bellfisher.co.uk
www.bellfisher.co.uk
LANDSCAPE ARCHITECTS