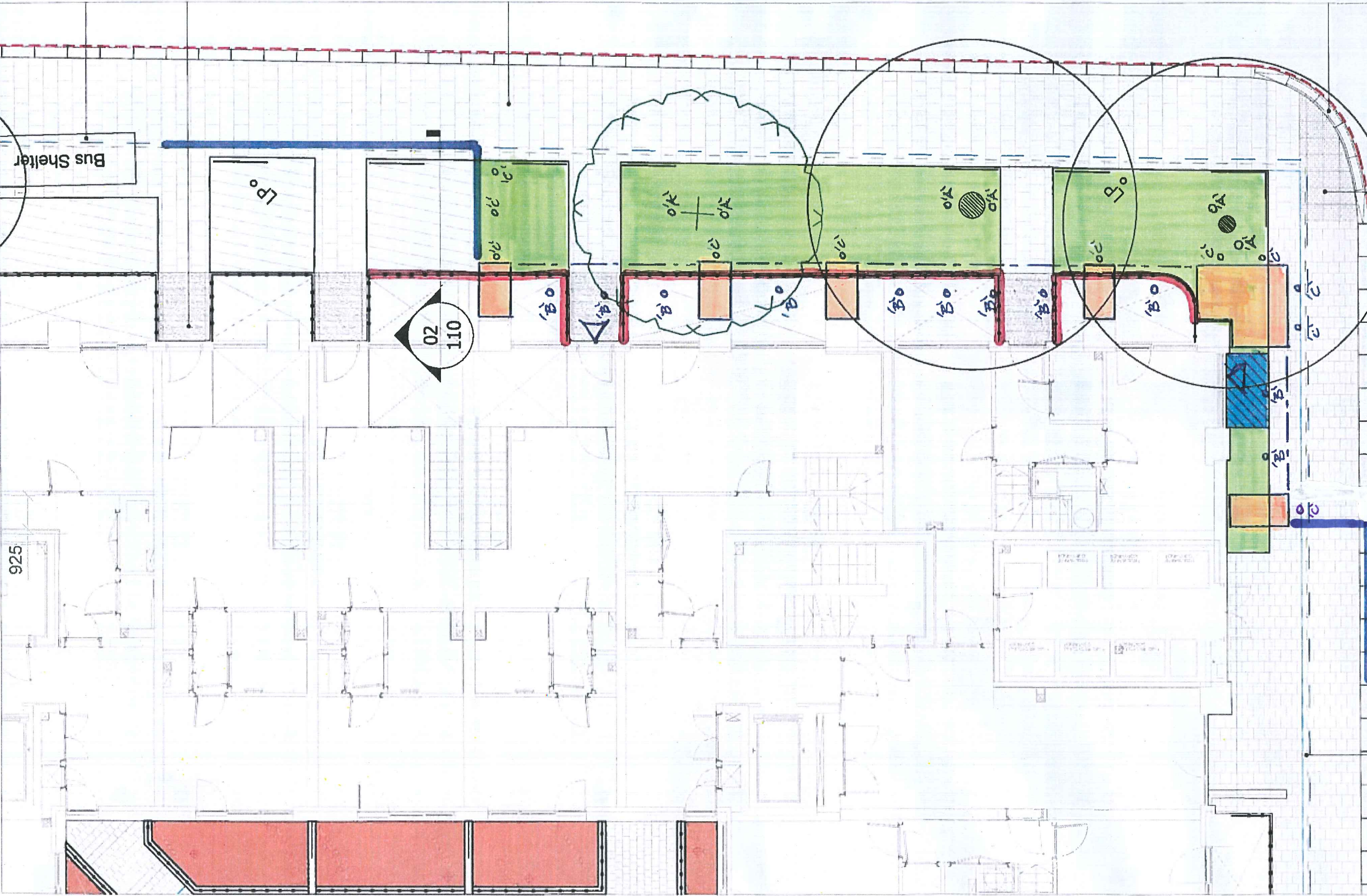


925



▬ = Extent of railings
▨ = Temp paving to access Marketing Suite - Type 02 rayburn B.

03

062
 - Soft landscaping. Enhanced by Sales.

▬ = Scaffold clad in ni-band.
▬ = Site hoarding

01

041

01

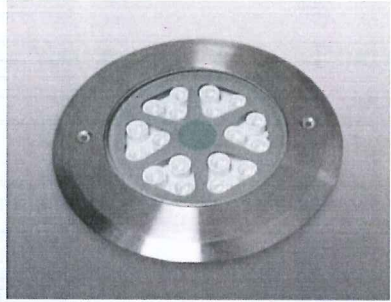
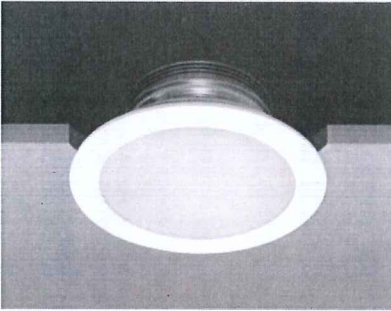

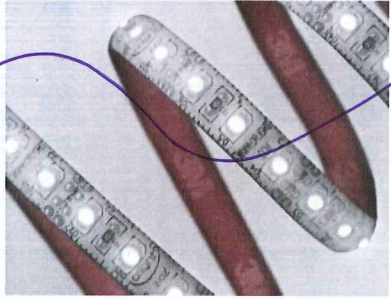
044

0'A = Ground recessed lights to illuminate tree canopy.
 0'B = Downlight to soft light of sales fascia.

0'C Around recessed spot light

Quotation

Project Ref:	79 Camden Road – Marketing Suite Externals	Date: 7 th June 2016
Notes:	Version 1 – Priced Per Line - Please confirm dimming protocols, colour temperature & quantities	

Product Code	Ref	Image	Description	Tech	Qty	Price (£)	Total (£)
ORLLM175CW	C A		High specification recessed inground fixture featuring integrated CREE LED chipset and marine grade 316 Stainless Steel construction to IP68. The fixture can accommodate up to a 2000Kg load. The ChipLife value of 50,000 rated hours ensures longevity. 40 Degree Optic – Remote Driver Required – 350mA – Series Wiring	18W ~5000K Switched	5 11	£145.00	£145.00
EZENTIAL181-4000	B		High Specification Solid State LED Fixture offering direct replacement for 2 x 18W CFL type fixtures. Featuring a CREE MX6 LED chipset the Ezential181 consumes 18W whilst producing up to 1520 lumens. With a Lumen per watt ratio of up to 84 this far exceeds low energy Part L standards. Colour Temperature of 4000K.	18W ~4000K Switched	2 11	£59.00	£59.00
ORLLM248CW	A B		High specification recessed inground fixture featuring integrated CREE LED chipset and marine grade 316 Stainless Steel construction to IP68. The fixture can accommodate up to a 2000Kg load. The ChipLife value of 50,000 rated hours ensures longevity.	24W ~5000K Switched	5 6	£315.00	£315.00
ORLTE6012EVO-3200	Strip Option 1		Warm White IP65 Rated LED Strip featuring Evolution LED SMD ChipSet & Cut points every 5CM. Stringent chip selection to maintain colour selection and consistency. 3M adhesive backing for ease of installation. Bespoke lengths as per request. Supplied with appropriate 12V constant voltage IP67 inline driver.	9.6W/M ~3200K Switched	1M	£29.90/M Incl. Drivers + Accessories	£29.90