

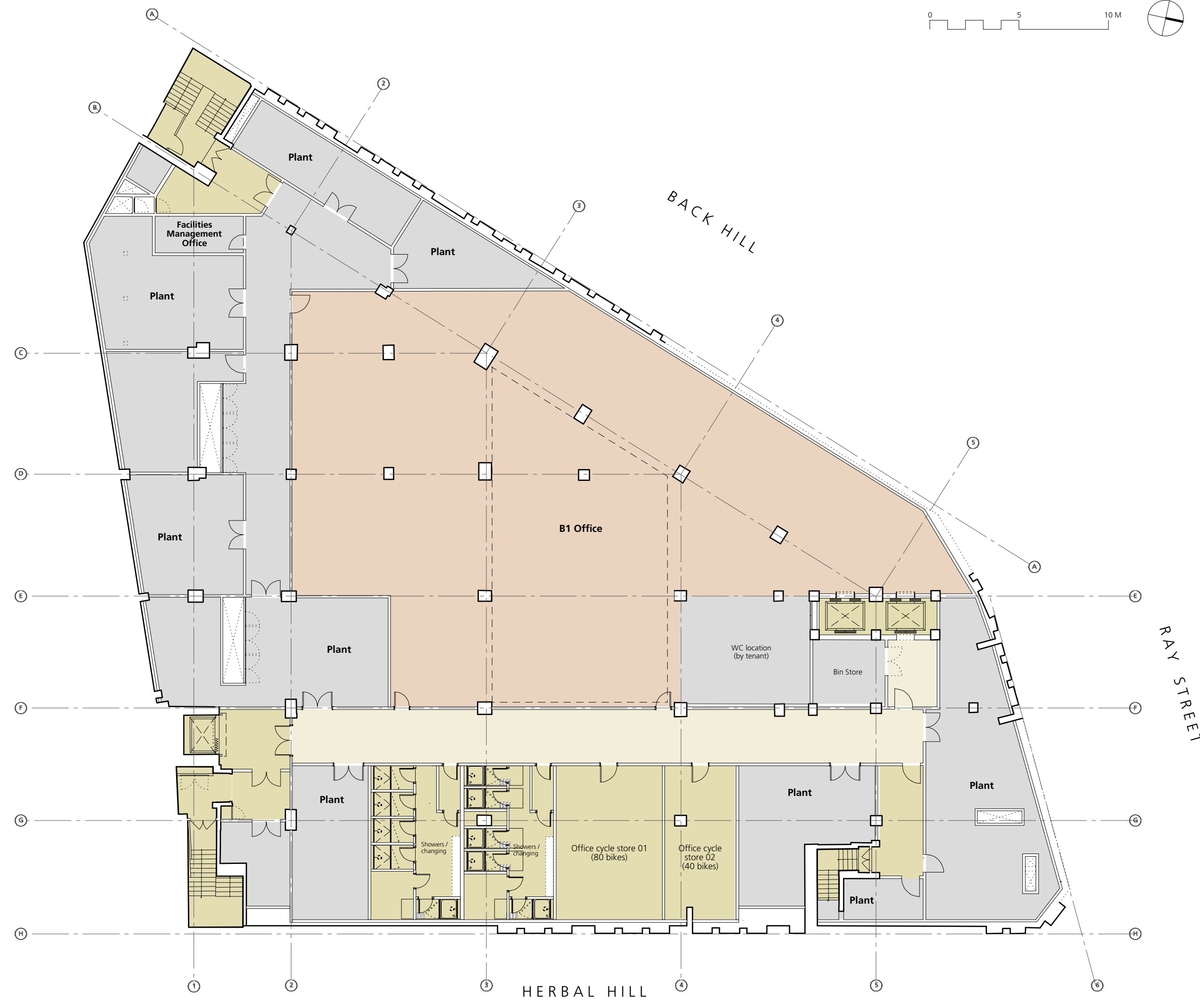
HERBAL HOUSE

Planning Amendments - Non Material Amendments Document

18th May 2016

SCHEDULE OF AMENDMENTS

		Original Scheme	Revised Scheme
DRAWINGS			
	<i>(863_PL_UG, 863_PL_05, 863_PL_06, 863_PL_RF, 863_GE_01, 863_GE_02)</i>		
Elevations			
<i>(863_PL_GE_01, GE_02)</i>	1.01	Continuous glazing to Ground floor reception along Back Hill	Reception entrance door within recessed bay pulled back from the street
	1.02	n/a	Internal arrangement of stair within reception amended
	1.03	Single leaf glazed reception entrance door	Double leaf glazed reception entrance door
	1.04	Back painted glazed curtain walling to solid elements of 5th and 6th floor extension	Brick slip cladding to insulated panels to solid elements of 5th and 6th floor extension
	1.05	Full height glazed curtain walling panels to 5th and 6th floor extension	Crittall style glazing to 5th and 6th floor extension
	1.06	Single doors out to residential terraces	Double doors out to residential terraces
	1.07	PV panels provided above office terrace only	Additional PV panels above residential, as requested by LBC sustainability officer
	1.08	New crittall style windows contain ventilation grill within selected crittall panes	Location of ventilation grilles within crittall panes amended
	1.09	Clear glazing to 4th floor mansard	Crittall style glazing to 4th floor mansard



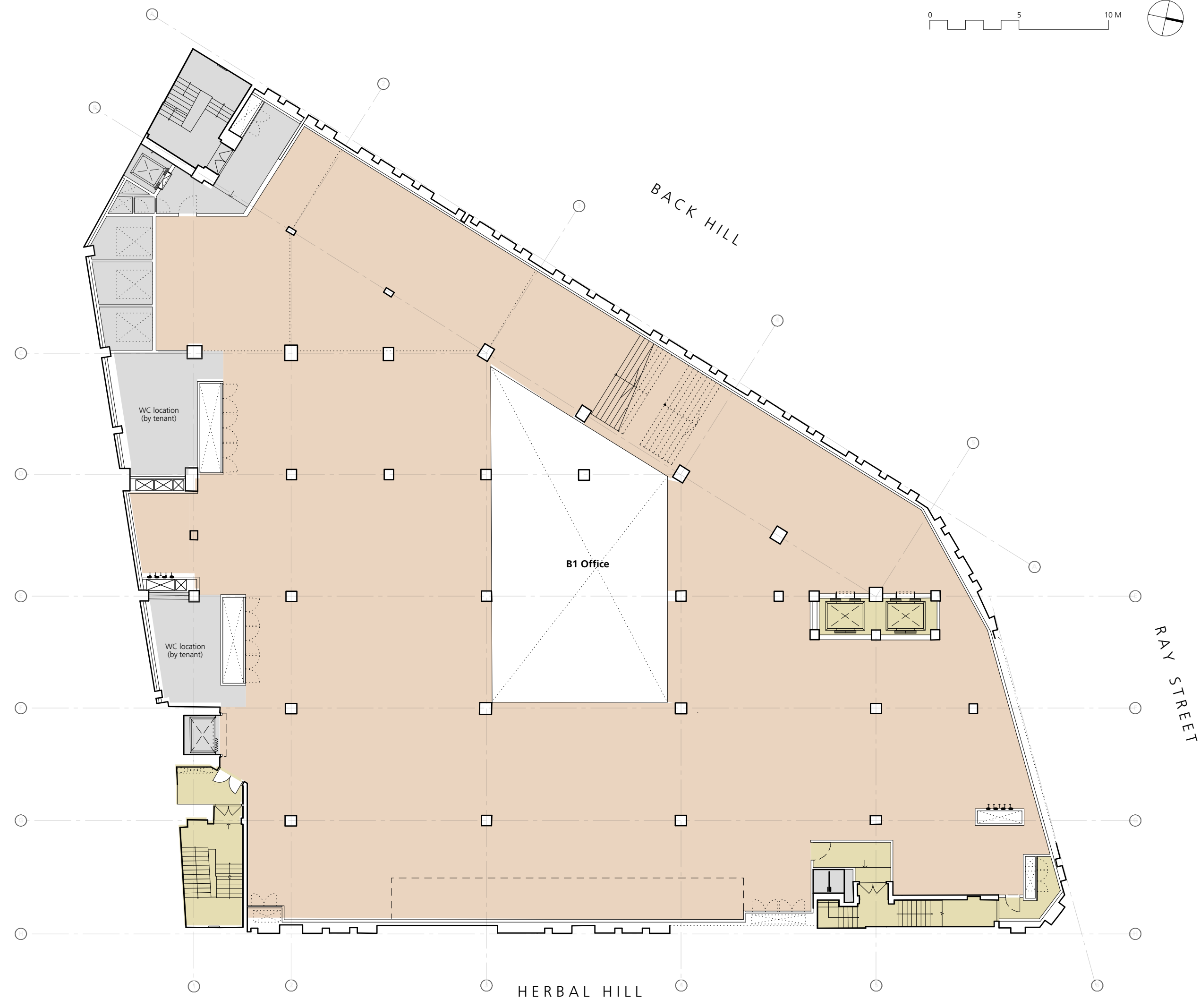
GENERAL NOTES:
 All dimensions to be checked on site prior to commencement of any works, and/or preparation of any shop drawings.
 Sizes of and dimensions to any structural elements are indicative only. See structural engineers drawings for actual sizes / dimensions.
 Sizes of and dimensions to any service elements are indicative only. See service engineers drawings for actual sizes and dimensions.
 This drawing to be read in conjunction with all other Architect's drawings, specifications and other Consultants' information.
 All proprietary systems shown on this drawing are to be installed strictly in accordance with the Manufacturers/Suppliers recommended details.
 Any discrepancies between information shown on this drawing and any other contract information or manufacturers/suppliers recommendations is to be brought to the attention of the Architect.
 DO NOT SCALE FROM THIS DRAWING.

NOTES:
**Approved Scheme,
 as Amended by
 2015/3337/P**

P2	Planning amendments	24.04.15
REVISION		DATE
Buckley Gray Yeoman Studio 4.04 The Tea Building 56 Shoreditch High Street London E1 6JJ T: 020 7333 9913 F: 020 7333 9914		
CLIENT	Allied London	
PROJECT	Herbal House	
DRAWING	Basement Proposed	
SCALE	1:100 @ A1 (1:200 @ A3)	
DATE	01.12.13	DRAWN BY OB
DWG No:	863-PL-GA-B2	REVISION P2
DRAWING STATUS	Planning	

Information contained on this drawing is the sole copyright of Buckley Gray Yeoman and is not to be reproduced without their permission.

No Change to Approved Drawing



GENERAL NOTES:
 All dimensions to be checked on site prior to commencement of any works, and/or preparation of any shop drawings.
 Sizes of and dimensions to any structural elements are indicative only. See structural engineers drawings for actual sizes / dimensions.
 Sizes of and dimensions to any service elements are indicative only. See service engineers drawings for actual sizes and dimensions.
 This drawing to be read in conjunction with all other Architect's drawings, specifications and other Consultants' information.
 All proprietary systems shown on this drawing are to be installed strictly in accordance with the Manufacturers/Suppliers recommended details.
 Any discrepancies between information shown on this drawing and any other contract information or manufacturers/suppliers recommendations is to be brought to the attention of the Architect.
 DO NOT SCALE FROM THIS DRAWING.

NOTES:
**Approved Scheme,
 as Amended by
 2015/6052 (MMA)**

REVISION	DATE
P3	Planning amendments - MMA 09.10.15
P2	Planning amendments 24.04.15

Buckley Gray Yeoman
 Studio 4.04 The Tea Building 56 Shoreditch High Street
 London E1 6JJ T: 020 7333 9913 F: 020 7333 9914

CLIENT: Allied London

PROJECT: Herbal House

DRAWING: Lower Ground Proposed

SCALE: 1:100 @ A1 (1:200 @ A3)

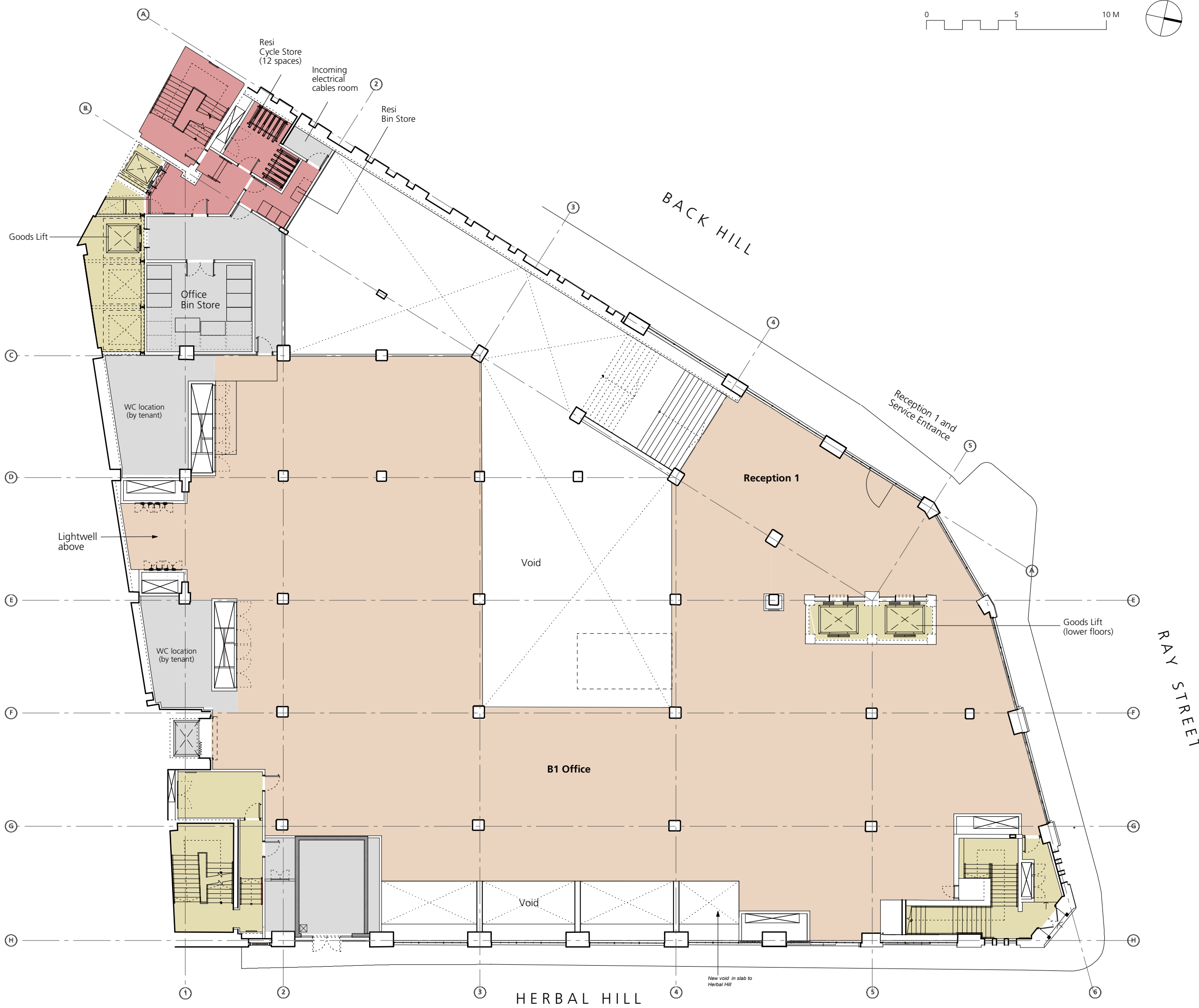
DATE: 01.12.13 DRAWN BY: OB

DWG No.: 863-PL-GA-LG REVISION: P3

DRAWING STATUS: Planning

No Change to Approved Drawing

Information contained on this drawing is the sole copyright of Buckley Gray Yeoman and is not to be reproduced without their permission.



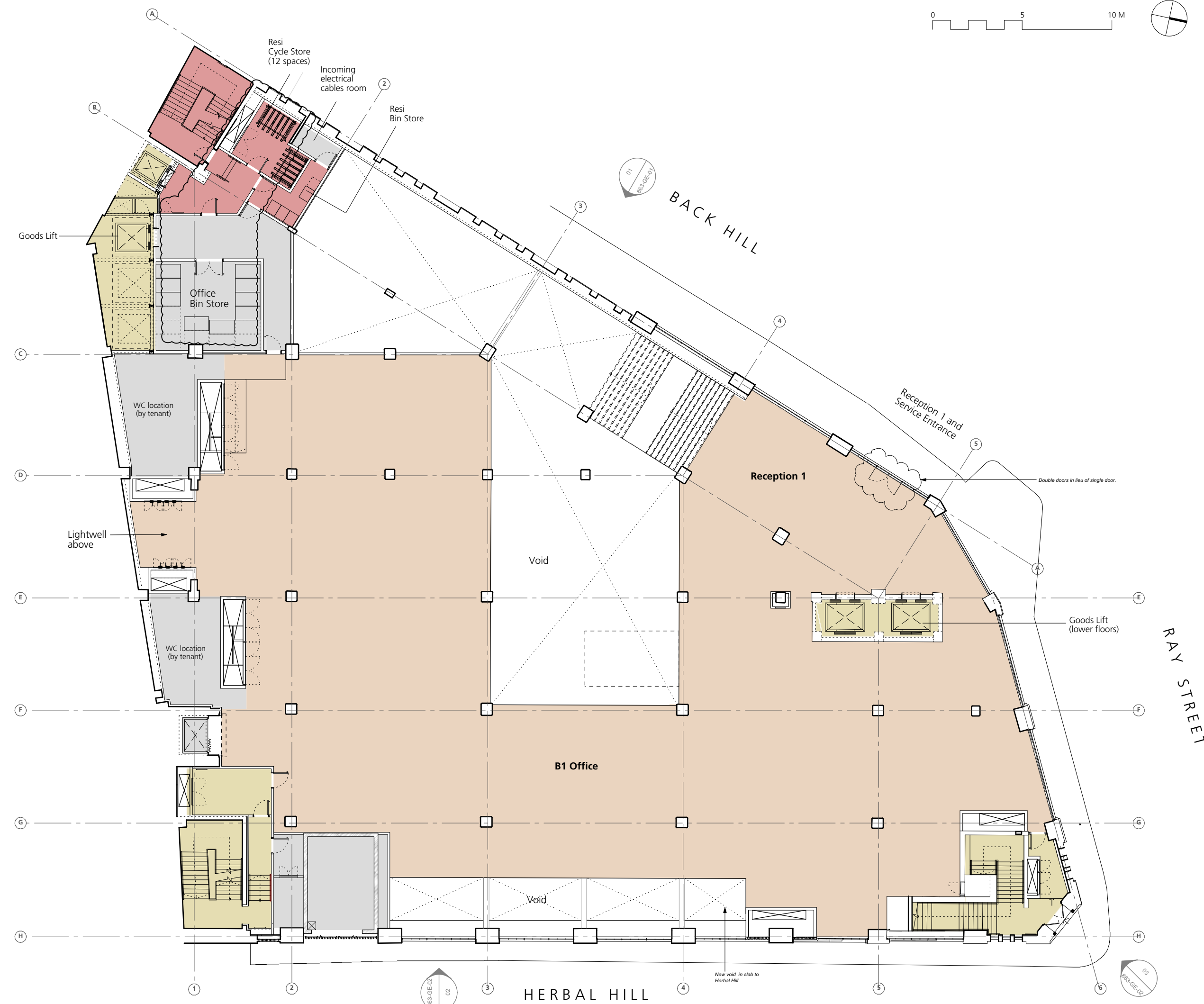
GENERAL NOTES:
 All dimensions to be checked on site prior to commencement of any works, and/or preparation of any shop drawings.
 Sizes of and dimensions to any structural elements are indicative only. See structural engineers drawings for actual sizes / dimensions.
 Sizes of and dimensions to any service elements are indicative only. See service engineers drawings for actual sizes and dimensions.
 This drawing to be read in conjunction with all other Architect's drawings, specifications and other Consultants' information.
 All proprietary systems shown on this drawing are to be installed strictly in accordance with the Manufacturers/Suppliers recommended details.
 Any discrepancies between information shown on this drawing and any other contract information or manufacturers/suppliers recommendations is to be brought to the attention of the Architect.
 DO NOT SCALE FROM THIS DRAWING.

NOTES:
Approved Scheme, as Amended by 2015/6052 (MMA)

REVISION	DATE
P7	Planning amendments - MMA 09.10.15
P6	Residential Cycle storage revised 06.09.15
P5	Residential Cycle storage revised 09.09.15
P4	A1/A3 Use class removed 26.08.15
P3	Location of B1 / A1 / A3 area clarified 17.07.15
P2	Planning amendments 24.04.15

Buckley Gray Yeoman	
Studio 4.04 The Tea Building 56 Shoreditch High Street London E1 6U F: 020 7033 9913 F: 020 7033 9914	
CLIENT	Allied London
PROJECT	Herbal House
DRAWING	Ground Proposed
SCALE	1:100 @ A1 (1:200@ A3)
DATE	01.12.13
DWG No.	863-PL-GA-00
DRAWING STATUS	Planning

Information contained on this drawing is the sole copyright of Buckley Gray Yeoman and not to be reproduced without their permission.



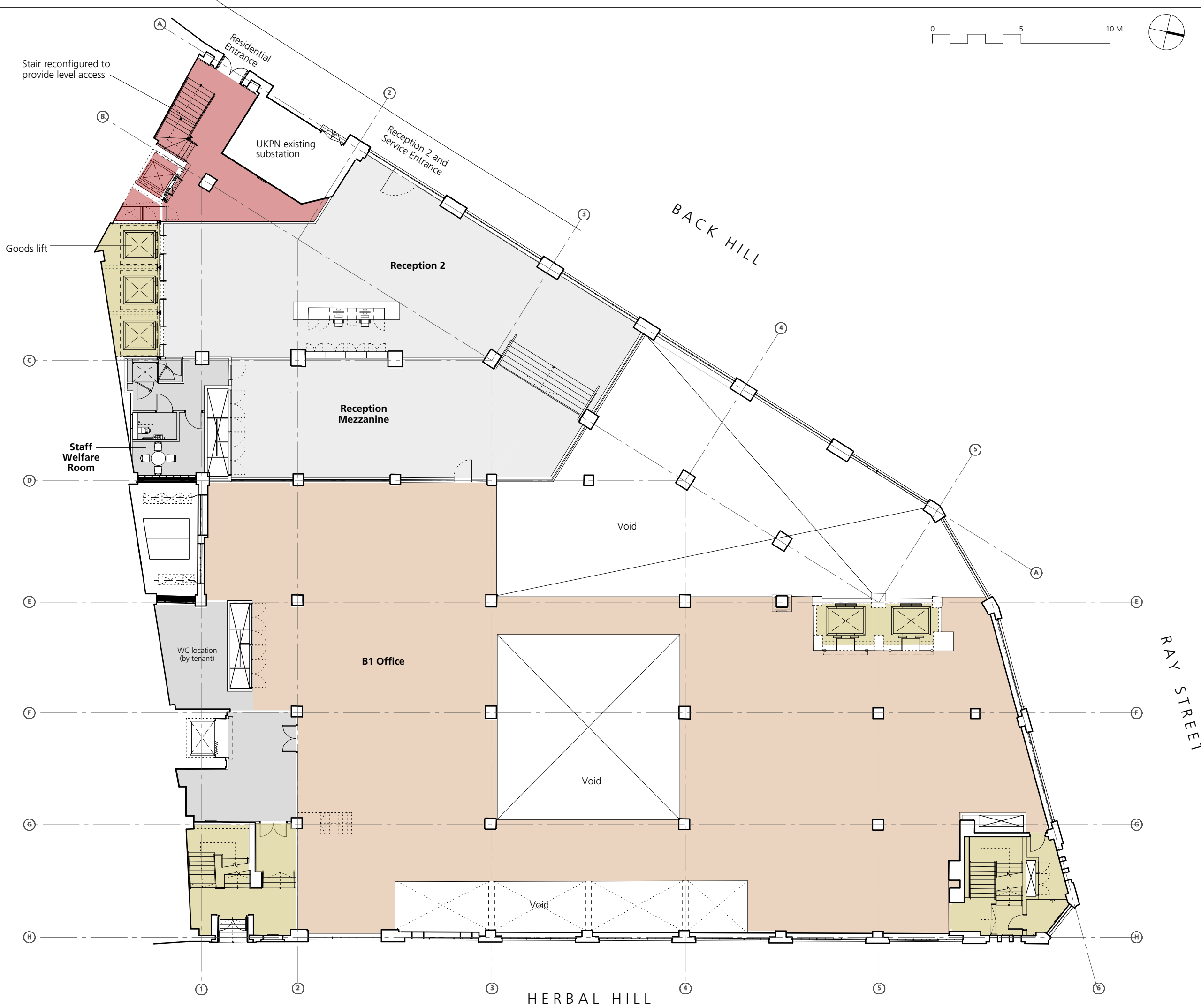
GENERAL NOTES:
 All dimensions to be checked on site prior to commencement of any works, and/or preparation of any shop drawings.
 Sizes of and dimensions to any structural elements are indicative only. See structural engineers drawings for actual sizes / dimensions.
 Sizes of and dimensions to any service elements are indicative only. See service engineers drawings for actual sizes and dimensions.
 This drawing to be read in conjunction with all other Architect's drawings, specifications and other Consultants' information.
 All proprietary systems shown on this drawing are to be installed strictly in accordance with the Manufacturers/Suppliers recommended details.
 Any discrepancies between information shown on this drawing and any other contract information or manufacturers/suppliers recommendations is to be brought to the attention of the Architect.
 DO NOT SCALE FROM THIS DRAWING.

NOTES:
Amended Scheme

REVISION	DATE
P8	Planning amendments - MMA 18.05.16
P7	Planning amendments - MMA 09.10.15
P6	Residential Cycle storage revised 06.09.15
P5	Residential Cycle storage revised 09.09.15
P4	A1/A3 Use class removed 26.08.15
P3	Location of B1 / A1 / A3 area clarified 17.07.15
P2	Planning amendments 24.04.15

Buckley Gray Yeoman	
Studio 4.04 The Tea Building 56 Shoreditch High Street London E1 6U F: 020 7033 9913 F: 020 7033 9914	
CLIENT	Allied London
PROJECT	Herbal House
DRAWING	Ground Proposed
SCALE	1:100 @ A1 (1:200@ A3)
DATE	01.12.13
DWG No.	863-PL-GA-00
DRAWING STATUS	Planning

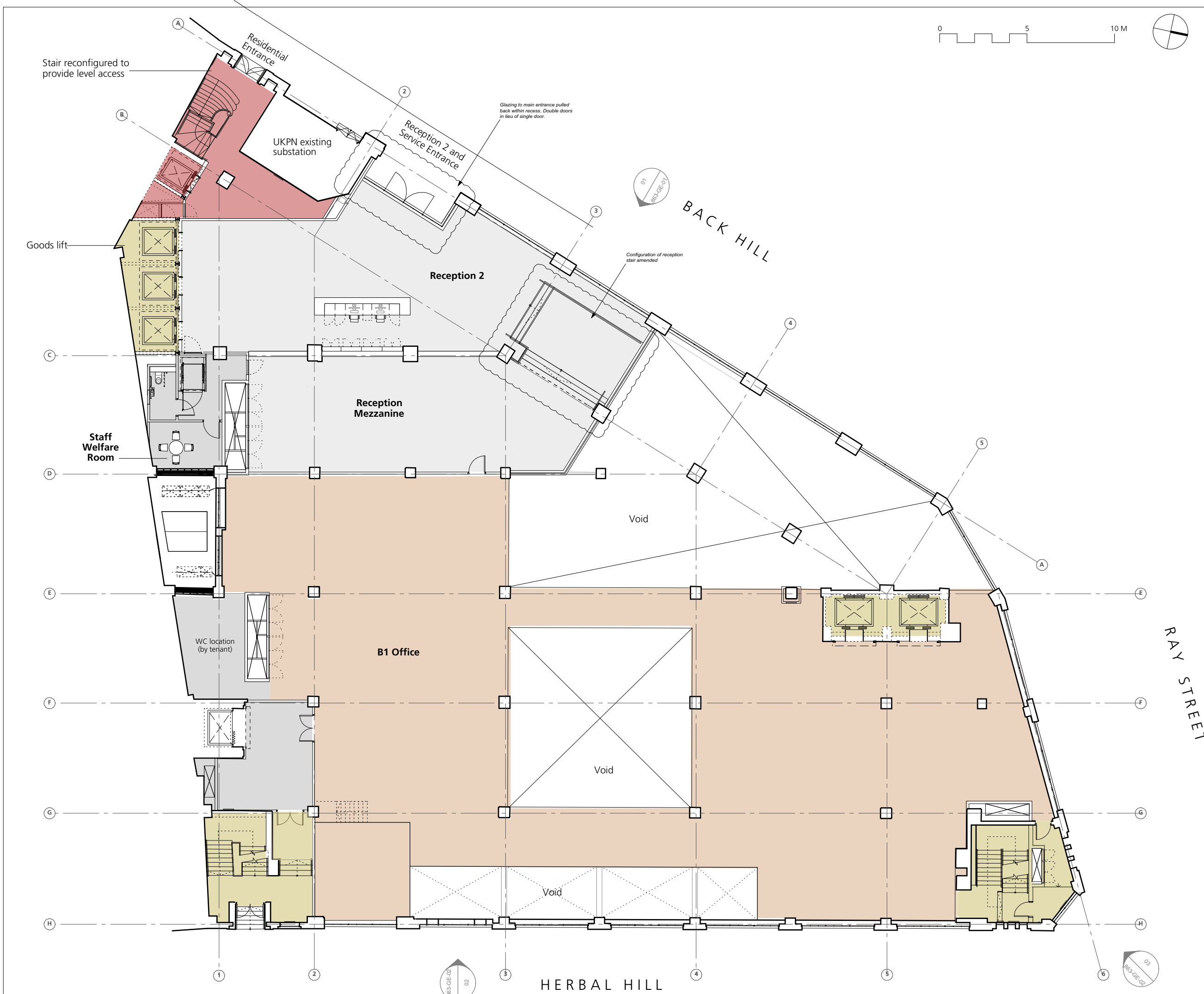
Information contained on this drawing is the sole copyright of Buckley Gray Yeoman and not to be reproduced without their permission.



GENERAL NOTES:
 All dimensions to be checked on site prior to commencement of any works, and/or preparation of any shop drawings.
 Sizes of and dimensions to any structural elements are indicative only. See structural engineers drawings for actual sizes / dimensions.
 Sizes of and dimensions to any service elements are indicative only. See service engineers drawings for actual sizes and dimensions.
 This drawing to be read in conjunction with all other Architect's drawings, specifications and other Consultants' information.
 All proprietary systems shown on this drawing are to be installed strictly in accordance with the Manufacturers/Suppliers recommended details.
 Any discrepancies between information shown on this drawing and any other contract information or manufacturers/suppliers recommendations is to be brought to the attention of the Architect.
 DO NOT SCALE FROM THIS DRAWING.

NOTES:
Approved Scheme, as Amended by 2015/6052 (MMA)

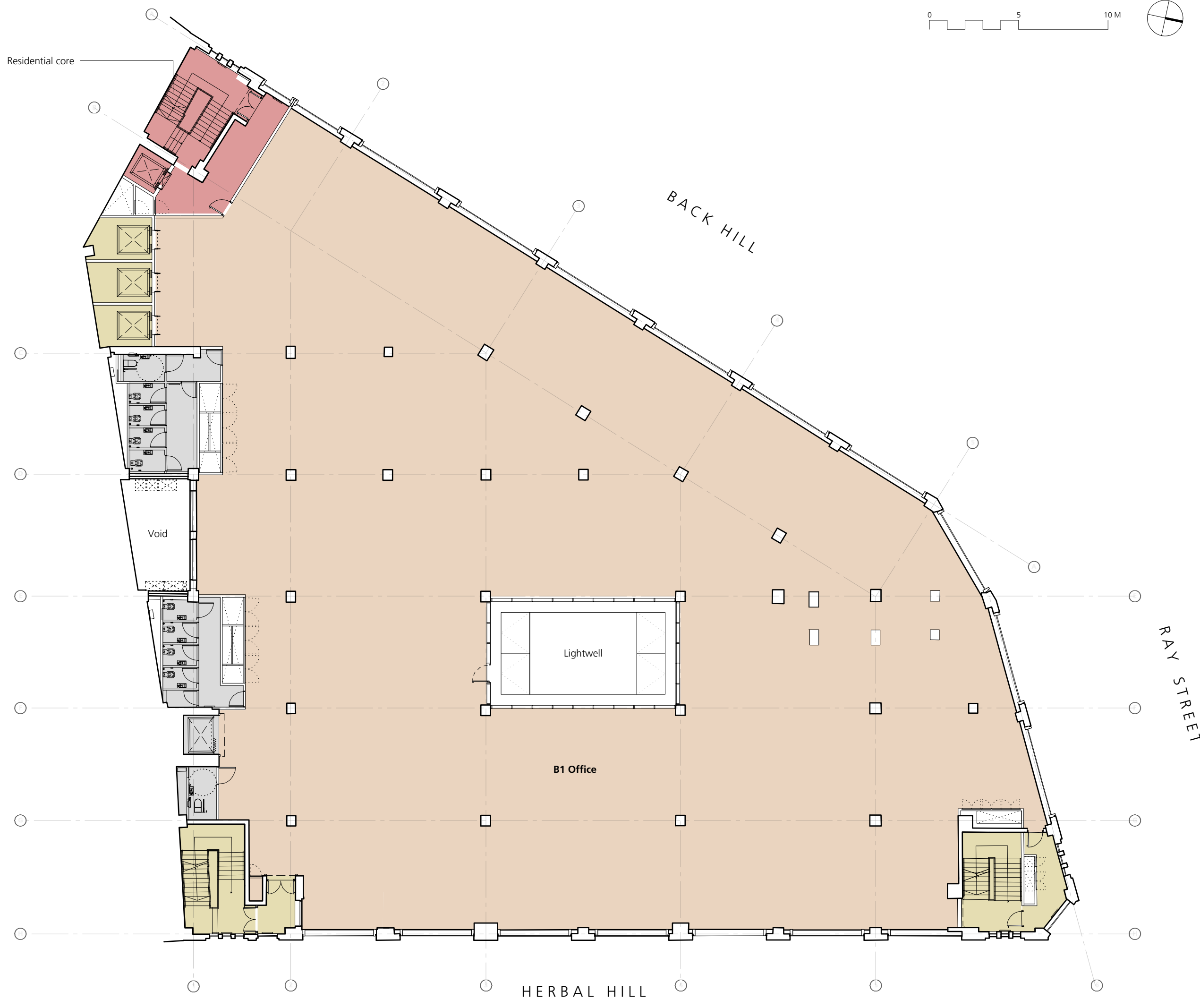
P4	Planning amendments - MMA	09.10.15
P3	Planning amendments	24.04.15
P2	Issued to show bin stores	29.10.14
REVISION		DATE
Buckley Gray Yeoman Studio 4.04 The Tea Building 56 Shoreditch High Street London E1 6U F: 020 7333 9913 F: 020 7033 9914		
CLIENT	Allied London	
PROJECT	Herbal House	
DRAWING	Upper Ground Floor Proposed	
SCALE	1:100 @ A1 (1:200 @ A3)	
DATE	01.12.13	DRAWN BY OB
DWG No.	863-PL-GA-UG	REVISION P4
DRAWING STATUS	Planning	



GENERAL NOTES:
 All dimensions to be checked on site prior to commencement of any works, and/or preparation of any shop drawings.
 Sizes of and dimensions to any structural elements are indicative only. See structural engineers drawings for actual sizes / dimensions.
 Sizes of and dimensions to any service elements are indicative only. See service engineers drawings for actual sizes and dimensions.
 This drawing to be read in conjunction with all other Architect's drawings, specifications and other Consultants' information.
 All proprietary systems shown on this drawing are to be installed strictly in accordance with the Manufacturers/Suppliers recommended details.
 Any discrepancies between information shown on this drawing and any other contract information or manufacturers/suppliers recommendations is to be brought to the attention of the Architect.
 DO NOT SCALE FROM THIS DRAWING.

NOTES:
Amended Scheme

P5	Planning amendments - MMA	18.05.16
P4	Planning amendments - MMA	09.10.15
P3	Planning amendments	24.04.15
P2	Issued to show bin stores	29.10.14
REVISION		DATE
Buckley Gray Yeoman Studio 4.04 The Tea Building 56 Shoreditch High Street London E1 6U F: 020 7333 9913 F: 020 7033 9914		
CLIENT	Allied London	
PROJECT	Herbal House	
DRAWING	Upper Ground Floor Proposed	
SCALE	1:100 @ A1 (1:200 @ A3)	
DATE	01.12.13	DRAWN BY OB
DWG No.	863-PL-GA-UG	REVISION P5
DRAWING STATUS	Planning	



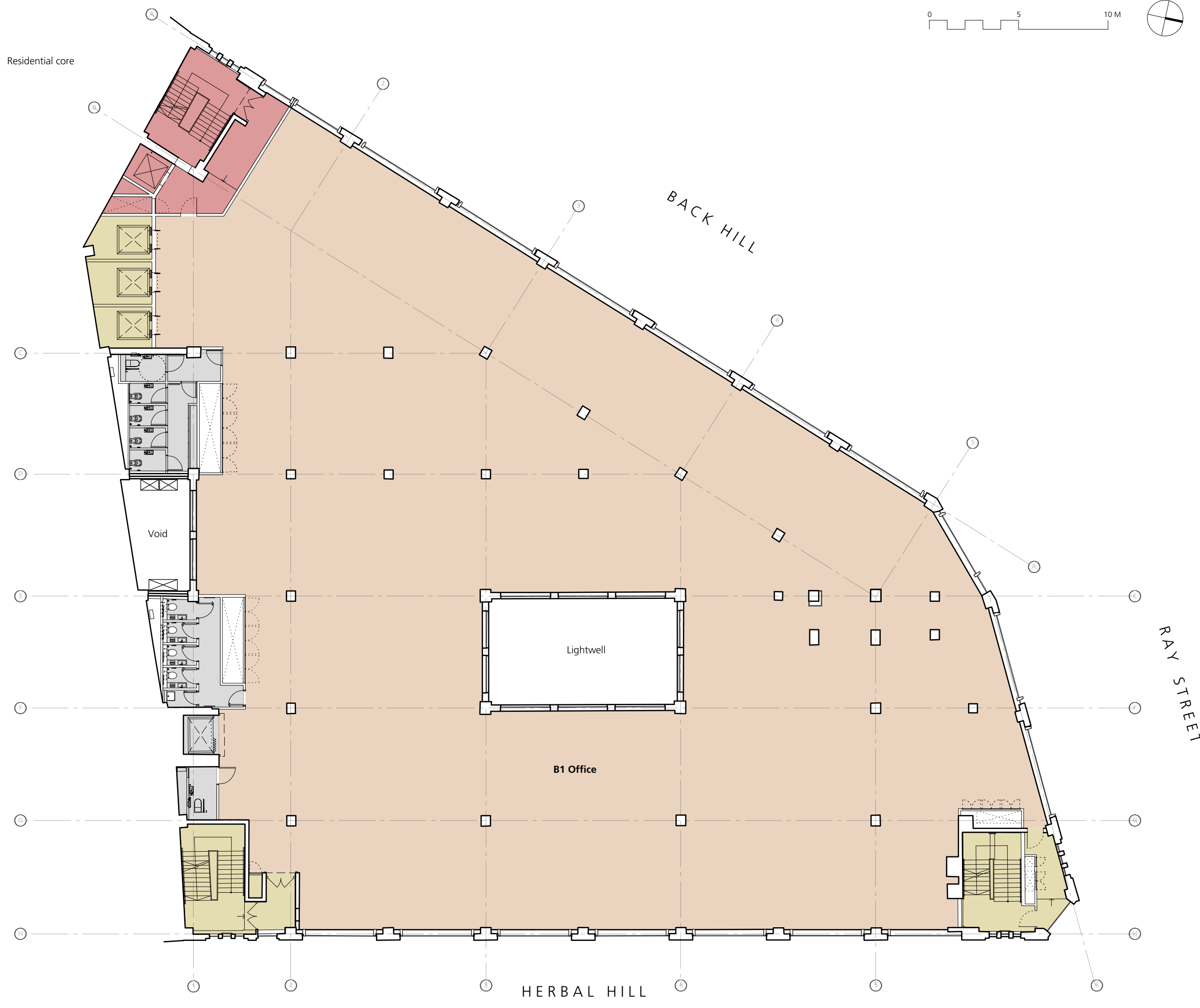
GENERAL NOTES:
 All dimensions to be checked on site prior to commencement of any works, and/or preparation of any shop drawings.
 Sizes of and dimensions to any structural elements are indicative only. See structural engineers drawings for actual sizes / dimensions.
 Sizes of and dimensions to any service elements are indicative only. See service engineers drawings for actual sizes and dimensions.
 This drawing to be read in conjunction with all other Architect's drawings, specifications and other Consultants' information.
 All proprietary systems shown on this drawing are to be installed strictly in accordance with the Manufacturers/Suppliers recommended details.
 Any discrepancies between information shown on this drawing and any other contract information or manufacturers/suppliers recommendations is to be brought to the attention of the Architect.
 DO NOT SCALE FROM THIS DRAWING.

NOTES:
**Approved Scheme,
 as Amended by
 2015/3337/P**

P2	Planning amendments	24.04.15
REVISION		DATE
Buckley Gray Yeoman		
Studio 4.04 The Tea Building 56 Shoreditch High Street London E1 6U T: 020 7333 9913 F: 020 7333 9914		
CLIENT	Allied London	
PROJECT	Herbal House	
DRAWING	First Floor Proposed	
SCALE	1:100 @ A1 (1:200 @ A3)	
DATE	01.12.13	DRAWN BY OB
DWG No.	863-PL-GA-01	REVISION P2
DRAWING STATUS	Planning	

Information contained on this drawing is the sole copyright of Buckley Gray Yeoman and is not to be reproduced without their permission.

No Change to Approved Drawing



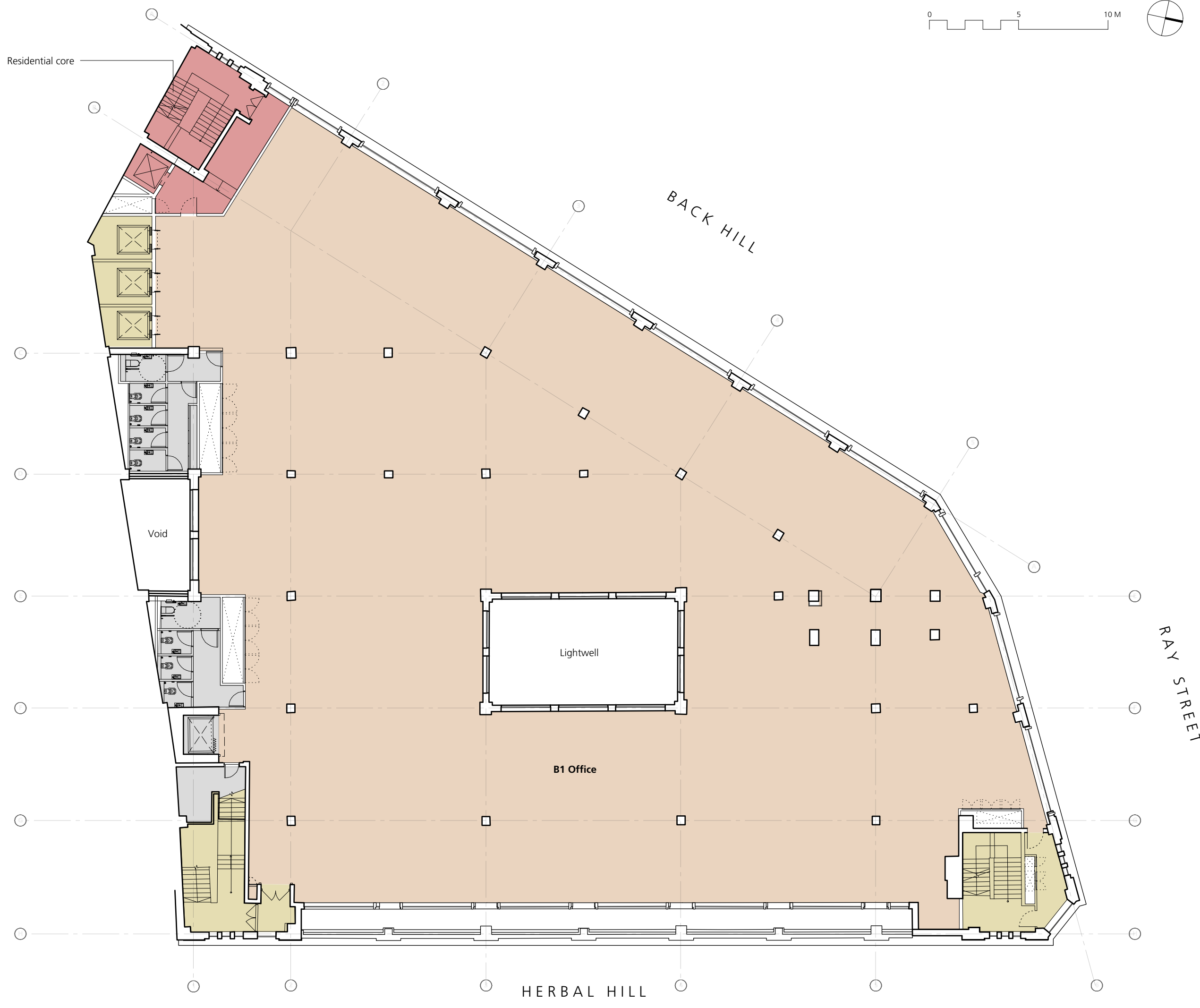
GENERAL NOTES:
 All dimensions to be checked on site prior to commencement of any works, and/or preparation of any shop drawings.
 Sizes of and dimensions to any structural elements are indicative only. See structural engineers drawings for actual sizes / dimensions.
 Sizes of and dimensions to any service elements are indicative only. See service engineers drawings for actual sizes and dimensions.
 This drawing to be read in conjunction with all other Architect's drawings, specifications and other Consultants' information.
 All proprietary systems shown on this drawing are to be installed strictly in accordance with the Manufacturers/Suppliers recommended details.
 Any discrepancies between information shown on this drawing and any other contract information or manufacturers/suppliers recommendations is to be brought to the attention of the Architect.
 DO NOT SCALE FROM THIS DRAWING.

NOTES:
**Approved Scheme,
 as Amended by
 2015/3337/P**

P2	Planning amendments	24.04.15
REVISION		DATE
Buckley Gray Yeoman Studio 4.04 The Tea Building 56 Shoreditch High Street London E1 6U T: 020 7333 9913 F: 020 7033 9914		
CLIENT	Allied London	
PROJECT	Herbal House	
DRAWING	Second Floor Proposed	
SCALE	1:100 @ A1 (1:200 @ A3)	
DATE	01.12.13	DRAWN BY OB
DWG No.	863-PL-GA-02	REVISION P2
DRAWING STATUS	Planning	

Information contained on this drawing is the sole copyright of Buckley Gray Yeoman and is not to be reproduced without their permission.

No Change to Approved Drawing

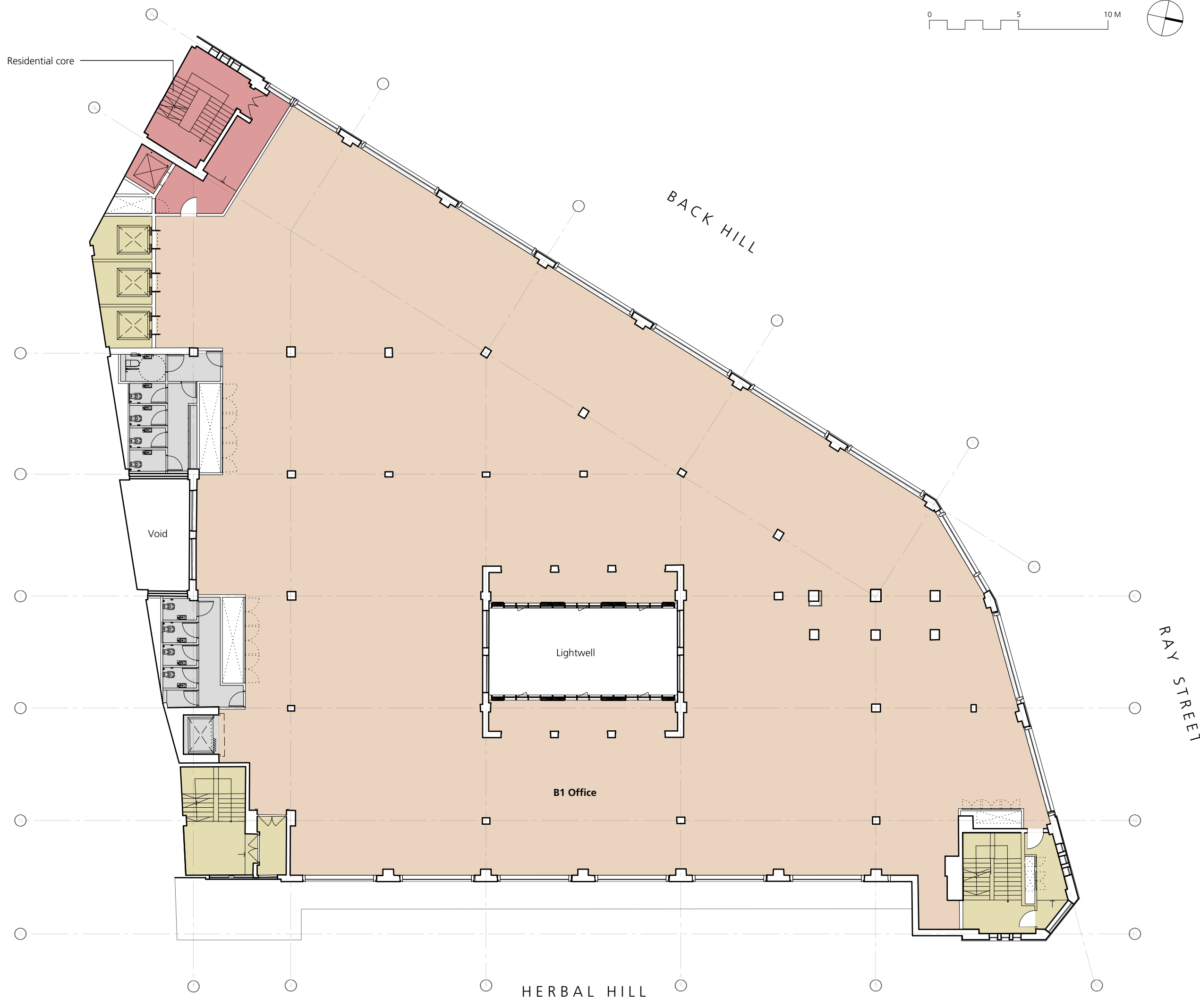


GENERAL NOTES:
 All dimensions to be checked on site prior to commencement of any works, and/or preparation of any shop drawings.
 Sizes of and dimensions to any structural elements are indicative only. See structural engineers drawings for actual sizes / dimensions.
 Sizes of and dimensions to any service elements are indicative only. See service engineers drawings for actual sizes and dimensions.
 This drawing to be read in conjunction with all other Architect's drawings, specifications and other Consultants' information.
 All proprietary systems shown on this drawing are to be installed strictly in accordance with the Manufacturers/Suppliers recommended details.
 Any discrepancies between information shown on this drawing and any other contract information or manufacturers/suppliers recommendations is to be brought to the attention of the Architect.
 DO NOT SCALE FROM THIS DRAWING.

NOTES:
**Approved Scheme,
 as Amended by
 2015/3337/P**

P2	Planning amendments	24.04.15
REVISION		DATE
Buckley Gray Yeoman Studio 4.04 The Tea Building 56 Shoreditch High Street London E1 6U T: 020 7033 9913 F: 020 7033 9914		
CLIENT	Allied London	
PROJECT	Herbal House	
DRAWING	Third Floor Proposed	
SCALE	1:100 @ A1 (1:200 @ A3)	
DATE	01.12.13	DRAWN BY OB
DWG No.	863-PL-GA-03	REVISION P2
DRAWING STATUS	Planning	

No Change to Approved Drawing

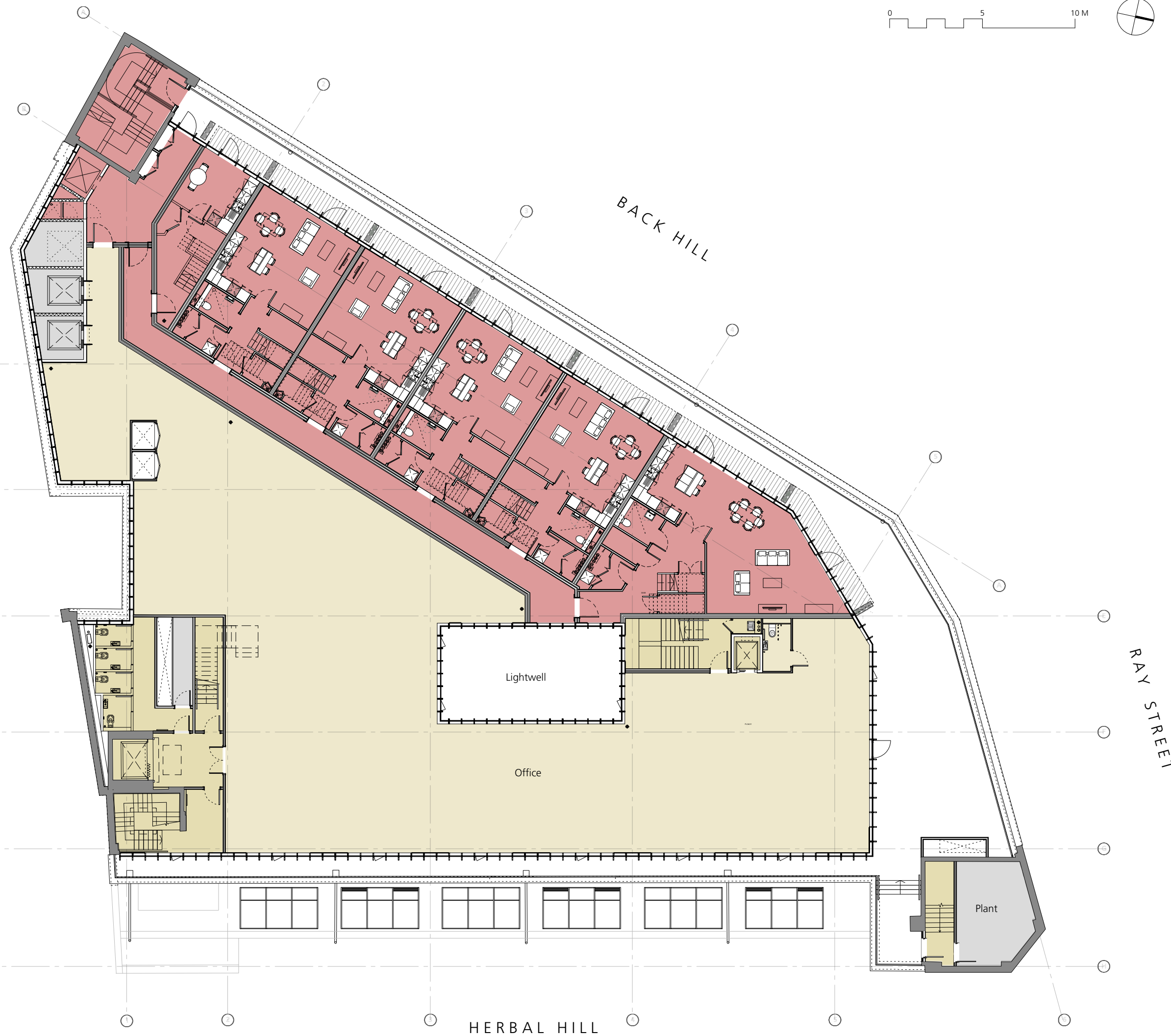


GENERAL NOTES:
 All dimensions to be checked on site prior to commencement of any works, and/or preparation of any shop drawings.
 Sizes of and dimensions to any structural elements are indicative only. See structural engineers drawings for actual sizes / dimensions.
 Sizes of and dimensions to any service elements are indicative only. See service engineers drawings for actual sizes and dimensions.
 This drawing to be read in conjunction with all other Architect's drawings, specifications and other Consultants' information.
 All proprietary systems shown on this drawing are to be installed strictly in accordance with the Manufacturers/Suppliers recommended details.
 Any discrepancies between information shown on this drawing and any other contract information or manufacturers/suppliers recommendations is to be brought to the attention of the Architect.
 DO NOT SCALE FROM THIS DRAWING.

NOTES:
**Approved Scheme,
 as Amended by
 2015/3337/P**

P2	Planning amendments	24.04.15
REVISION		DATE
Buckley Gray Yeoman		
Studio 4.04 The Tea Building 56 Shoreditch High Street London E1 6U T: 020 7333 9913 F: 020 7333 9914		
CLIENT	Allied London	
PROJECT	Herbal House	
DRAWING	Fourth Floor Proposed	
SCALE	1:100 @ A1 (1:200 @ A3)	
DATE	01.12.13	DRAWN BY OB
DWG No.	863-PL-GA-04	REVISION P2
DRAWING STATUS	Planning	

No Change to Approved Drawing



GENERAL NOTES:
 All dimensions to be checked on site prior to commencement of any works, and/or preparation of any shop drawings.
 Sizes of and dimensions to any structural elements are indicative only. See structural engineers drawings for actual sizes / dimensions.
 Sizes of and dimensions to any service elements are indicative only. See service engineers drawings for actual sizes and dimensions.
 This drawing to be read in conjunction with all other Architect's drawings, specifications and other Consultants' information.
 All proprietary systems shown on this drawing are to be installed strictly in accordance with the Manufacturers/Suppliers recommended details.
 Any discrepancies between information shown on this drawing and any other contract information or manufacturers/suppliers recommendations is to be brought to the attention of the Architect.
 DO NOT SCALE FROM THIS DRAWING.

**Approved Scheme,
 as Amended by
 2015/3337/P**

NOTES:

P4	Planning amendments - NBA	24/04/15
P3	Planning - notes amended	04/11/14
P2	Planning - Unit layouts	07/07/14
REVISION		DATE

Buckley Gray Yeoman
 Studio 4.04 The Tea Building 56 Shoreditch High Street
 London E1 6JJ T: 020 7333 9913 F: 020 7333 9914

CLIENT	Allied London
PROJECT	Herbal House
DRAWING	Fifth Floor Proposed
SCALE	1:100 @ A1 (1:200 @ A3)
DATE	01.12.13
DWG No.	863-PL-GA-05
DRAWING STATUS	Planning

Information contained on this drawing is the sole copyright of Buckley Gray Yeoman and is not to be reproduced without their permission.



GENERAL NOTES:
 All dimensions to be checked on site prior to commencement of any works, and/or preparation of any shop drawings.
 Sizes of and dimensions to any structural elements are indicative only. See structural engineers drawings for actual sizes / dimensions.
 Sizes of and dimensions to any service elements are indicative only. See service engineers drawings for actual sizes and dimensions.
 This drawing to be read in conjunction with all other Architect's drawings, specifications and other Consultants' information.
 All proprietary systems shown on this drawing are to be installed strictly in accordance with the Manufacturers/Suppliers recommended details.
 Any discrepancies between information shown on this drawing and any other contract information or manufacturers/suppliers recommendations is to be brought to the attention of the Architect.
 DO NOT SCALE FROM THIS DRAWING.

Amended Scheme

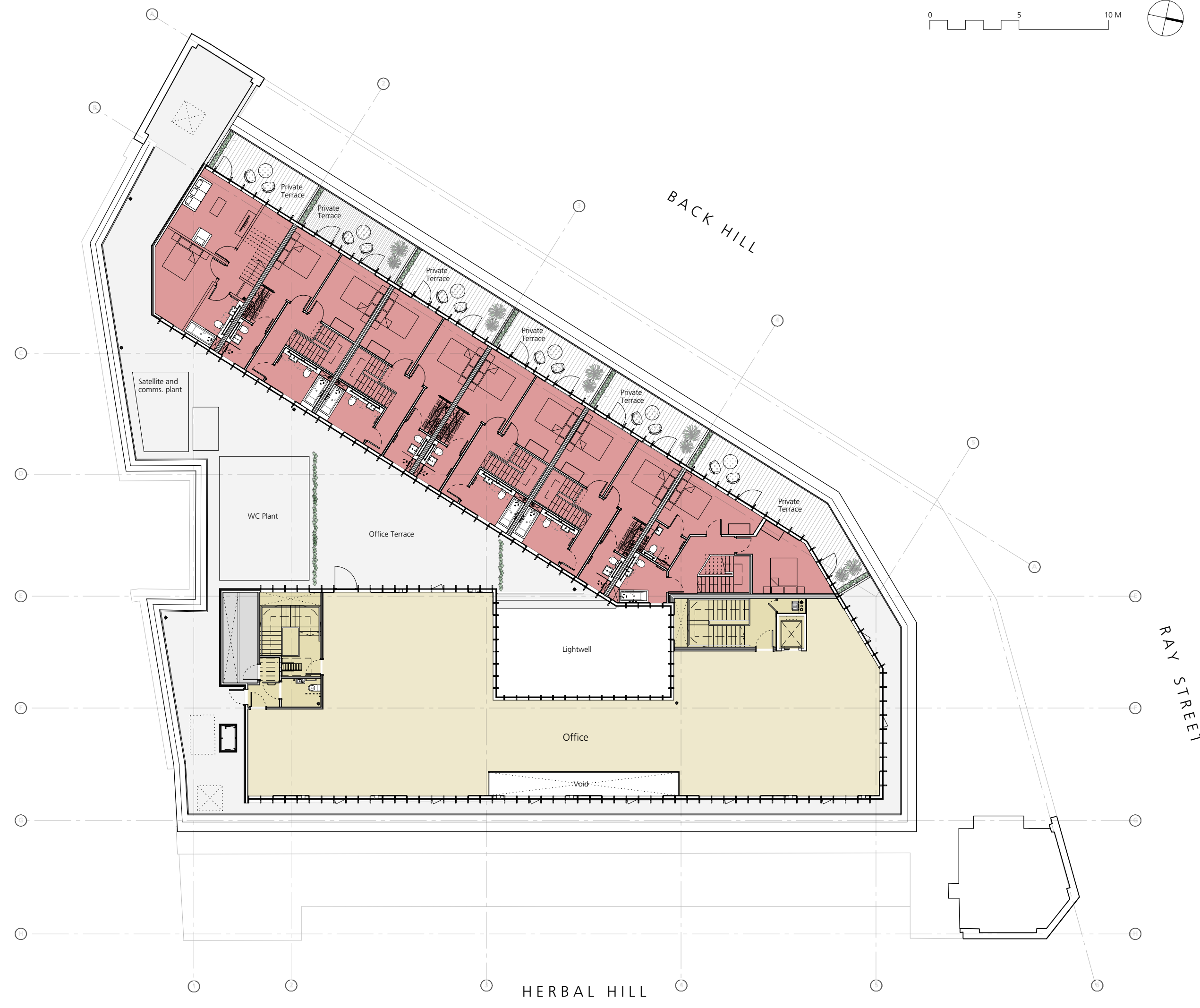
NOTES:

P5	Planning amendments - NBA	18/05/16
P4	Planning amendments	24/04/15
P3	Planning - notes amended	04/11/14
P2	Planning - Unit layouts	07/07/14
REVISION		DATE

Buckley Gray Yeoman
 Studio 4.04 The Tea Building 56 Shoreditch High Street
 London E1 6JJ T: 020 7333 9913 F: 020 7333 9914

CLIENT	Allied London
PROJECT	Herbal House
DRAWING	Fifth Floor Proposed
SCALE	1:100 @ A1 (1:200 @ A3)
DATE	01.12.13
DWG No.	863-PL-GA-05
DRAWING STATUS	Planning

Information contained on this drawing is the sole copyright of Buckley Gray Yeoman and is not to be reproduced without their permission.

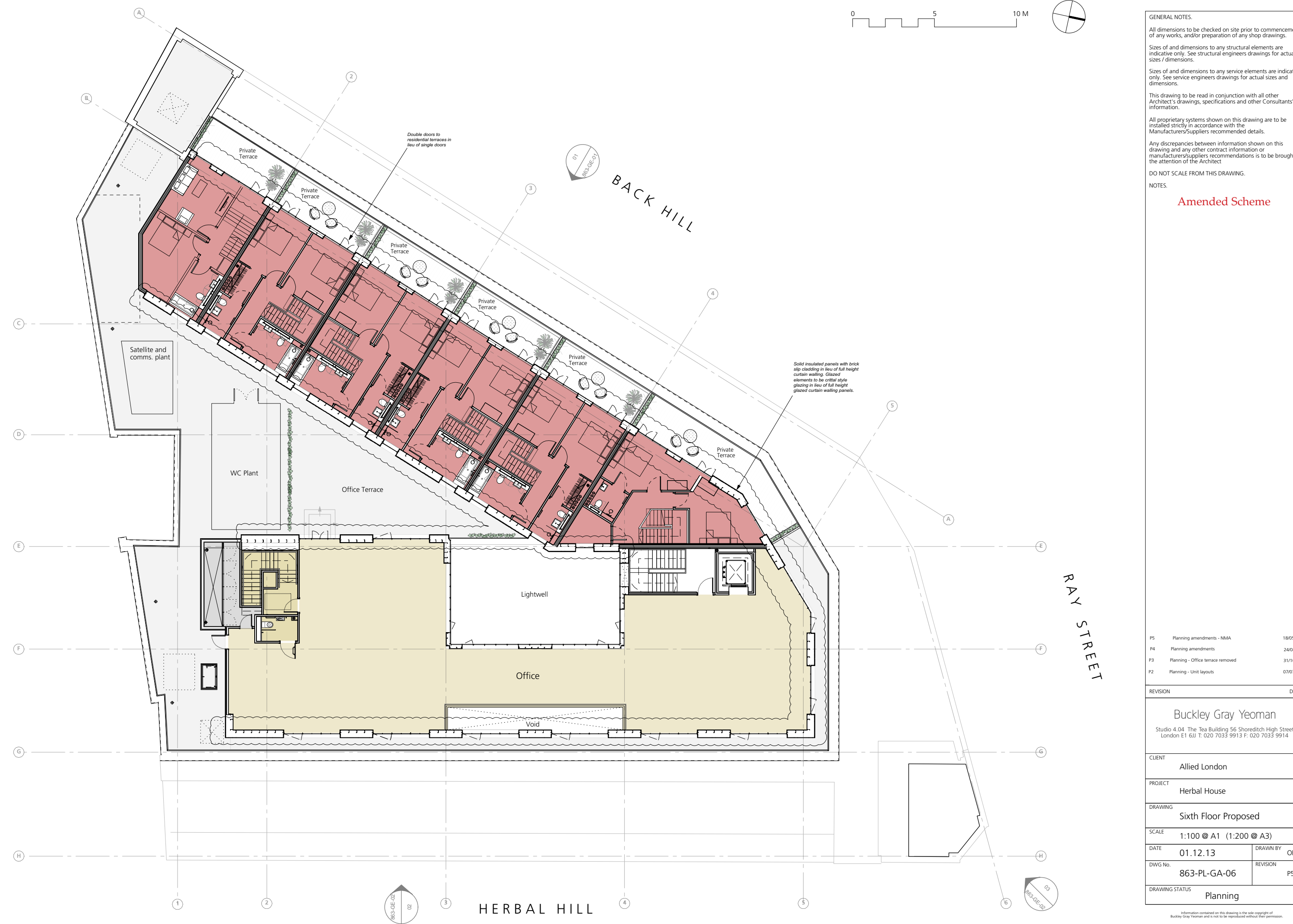


GENERAL NOTES:
 All dimensions to be checked on site prior to commencement of any works, and/or preparation of any shop drawings.
 Sizes of and dimensions to any structural elements are indicative only. See structural engineers drawings for actual sizes / dimensions.
 Sizes of and dimensions to any service elements are indicative only. See service engineers drawings for actual sizes and dimensions.
 This drawing to be read in conjunction with all other Architect's drawings, specifications and other Consultants' information.
 All proprietary systems shown on this drawing are to be installed strictly in accordance with the Manufacturers/Suppliers recommended details.
 Any discrepancies between information shown on this drawing and any other contract information or manufacturers/suppliers recommendations is to be brought to the attention of the Architect.
 DO NOT SCALE FROM THIS DRAWING.

NOTES:
**Approved Scheme,
 as Amended by
 2015/3337/P**

P4	Planning amendments	24/04/15
P3	Planning - Office terrace removed	31/10/14
P2	Planning - Unit layouts	07/07/14
REVISION		DATE
Buckley Gray Yeoman Studio 4.04 The Tea Building 56 Shoreditch High Street London E1 6UJ T: 020 7033 9913 F: 020 7033 9914		
CLIENT	Allied London	
PROJECT	Herbal House	
DRAWING	Sixth Floor Proposed	
SCALE	1:100 @ A1 (1:200 @ A3)	
DATE	01.12.13	DRAWN BY OB
DWG No.	863-PL-GA-06	REVISION P4
DRAWING STATUS	Planning	

Information contained on this drawing is the sole copyright of Buckley Gray Yeoman and is not to be reproduced without their permission.

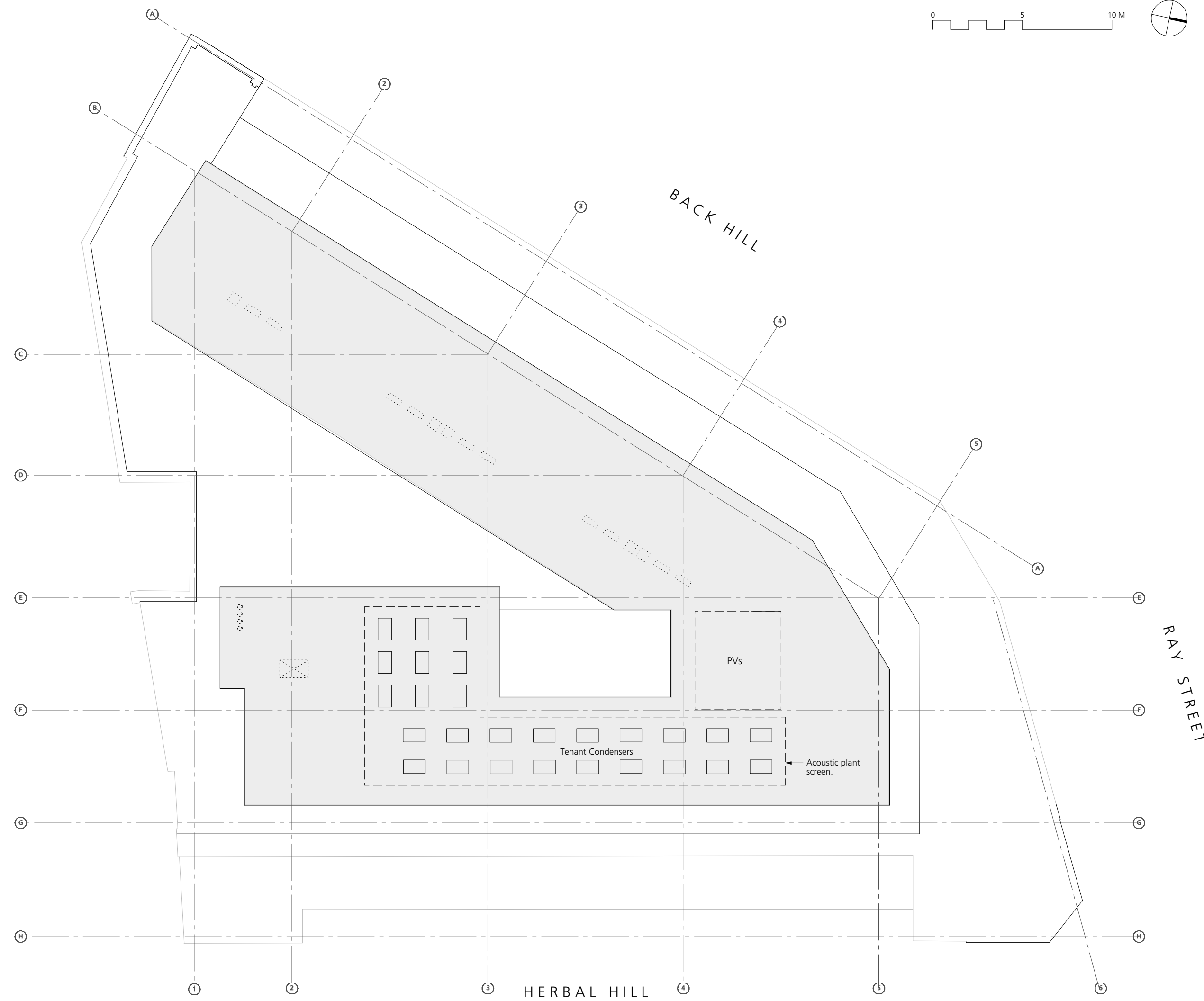


GENERAL NOTES:
 All dimensions to be checked on site prior to commencement of any works, and/or preparation of any shop drawings.
 Sizes of and dimensions to any structural elements are indicative only. See structural engineers drawings for actual sizes / dimensions.
 Sizes of and dimensions to any service elements are indicative only. See service engineers drawings for actual sizes and dimensions.
 This drawing to be read in conjunction with all other Architect's drawings, specifications and other Consultants' information.
 All proprietary systems shown on this drawing are to be installed strictly in accordance with the Manufacturers/Suppliers recommended details.
 Any discrepancies between information shown on this drawing and any other contract information or manufacturers/suppliers recommendations is to be brought to the attention of the Architect.
 DO NOT SCALE FROM THIS DRAWING.

NOTES:
Amended Scheme

P5	Planning amendments - NMA	18/05/16
P4	Planning amendments	24/04/15
P3	Planning - Office terrace removed	31/10/14
P2	Planning - Unit layouts	07/07/14
REVISION		DATE
Buckley Gray Yeoman Studio 4.04 The Tea Building 56 Shoreditch High Street London E1 6UJ T: 020 7033 9913 F: 020 7033 9914		
CLIENT	Allied London	
PROJECT	Herbal House	
DRAWING	Sixth Floor Proposed	
SCALE	1:100 @ A1 (1:200 @ A3)	
DATE	01.12.13	DRAWN BY OB
DWG No.	863-PL-GA-06	REVISION P5
DRAWING STATUS	Planning	

Information contained on this drawing is the sole copyright of Buckley Gray Yeoman and is not to be reproduced without their permission.

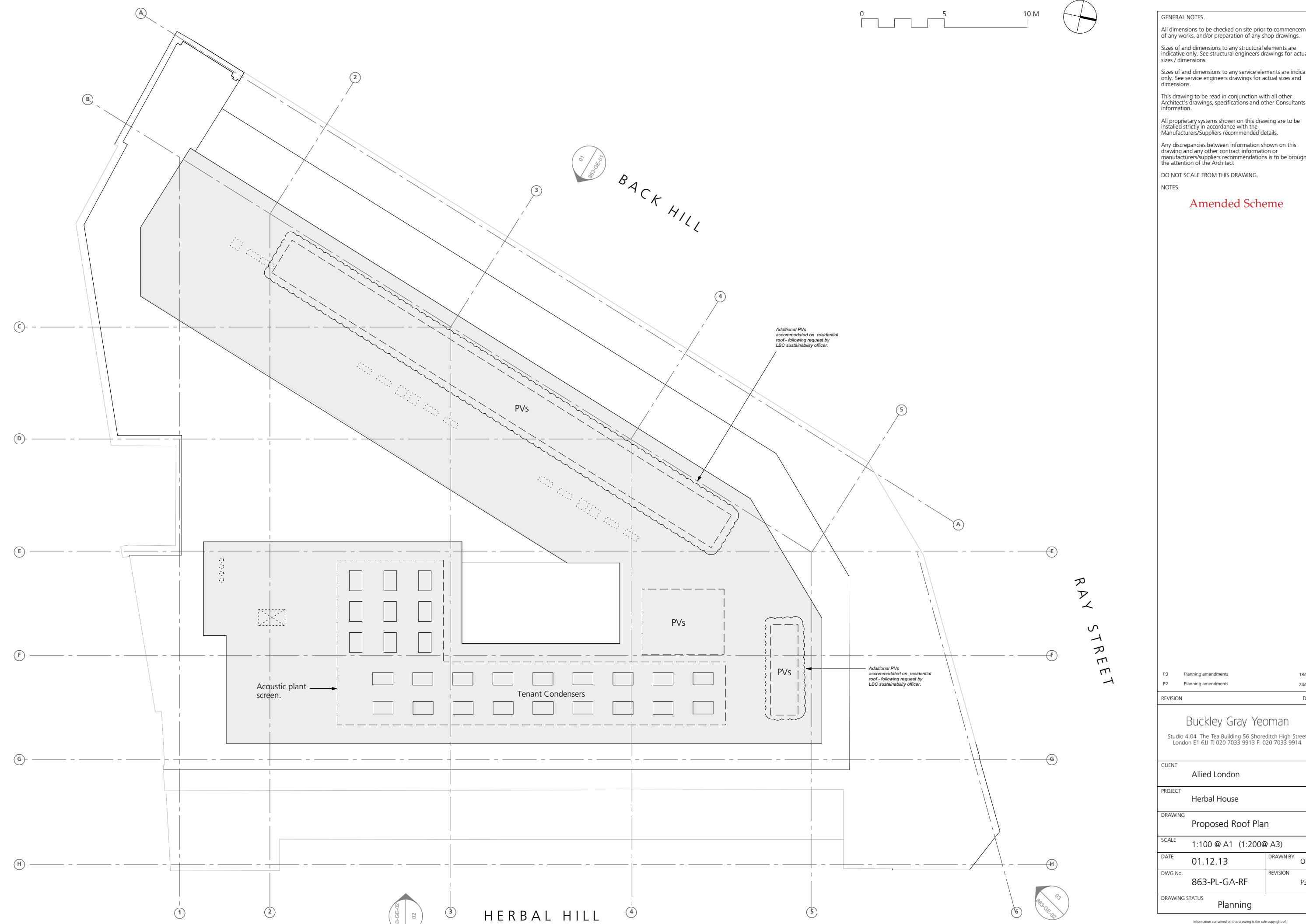


GENERAL NOTES:
 All dimensions to be checked on site prior to commencement of any works, and/or preparation of any shop drawings.
 Sizes of and dimensions to any structural elements are indicative only. See structural engineers drawings for actual sizes / dimensions.
 Sizes of and dimensions to any service elements are indicative only. See service engineers drawings for actual sizes and dimensions.
 This drawing to be read in conjunction with all other Architect's drawings, specifications and other Consultants' information.
 All proprietary systems shown on this drawing are to be installed strictly in accordance with the Manufacturers/Suppliers recommended details.
 Any discrepancies between information shown on this drawing and any other contract information or manufacturers/suppliers recommendations is to be brought to the attention of the Architect.
 DO NOT SCALE FROM THIS DRAWING.

NOTES:
Approved Scheme, as Amended by 2015/3337/P

P2	Planning amendments	24/04/15
REVISION		DATE
Buckley Gray Yeoman		
Studio 4.04 The Tea Building 56 Shoreditch High Street London E1 6UJ T: 020 7033 9913 F: 020 7033 9914		
CLIENT	Allied London	
PROJECT	Herbal House	
DRAWING	Proposed Roof Plan	
SCALE	1:100 @ A1 (1:200@ A3)	
DATE	01.12.13	DRAWN BY OB
DWG No:	863-PL-GA-RF	REVISION P2
DRAWING STATUS	Planning	

Information contained on this drawing is the sole copyright of Buckley Gray Yeoman and is not to be reproduced without their permission.



GENERAL NOTES:
 All dimensions to be checked on site prior to commencement of any works, and/or preparation of any shop drawings.
 Sizes of and dimensions to any structural elements are indicative only. See structural engineers drawings for actual sizes / dimensions.
 Sizes of and dimensions to any service elements are indicative only. See service engineers drawings for actual sizes and dimensions.
 This drawing to be read in conjunction with all other Architect's drawings, specifications and other Consultants' information.
 All proprietary systems shown on this drawing are to be installed strictly in accordance with the Manufacturers/Suppliers recommended details.
 Any discrepancies between information shown on this drawing and any other contract information or manufacturers/suppliers recommendations is to be brought to the attention of the Architect.
 DO NOT SCALE FROM THIS DRAWING.

NOTES:
Amended Scheme

P3	Planning amendments	18/06/16
P2	Planning amendments	24/04/15
REVISION		DATE
Buckley Gray Yeoman		
Studio 4.04 The Tea Building 56 Shoreditch High Street London E1 6UJ T: 020 7033 9913 F: 020 7033 9914		
CLIENT	Allied London	
PROJECT	Herbal House	
DRAWING	Proposed Roof Plan	
SCALE	1:100 @ A1 (1:200@ A3)	
DATE	01.12.13	DRAWN BY OB
DWG No:	863-PL-GA-RF	REVISION P3
DRAWING STATUS	Planning	

Information contained on this drawing is the sole copyright of Buckley Gray Yeoman and is not to be reproduced without their permission.