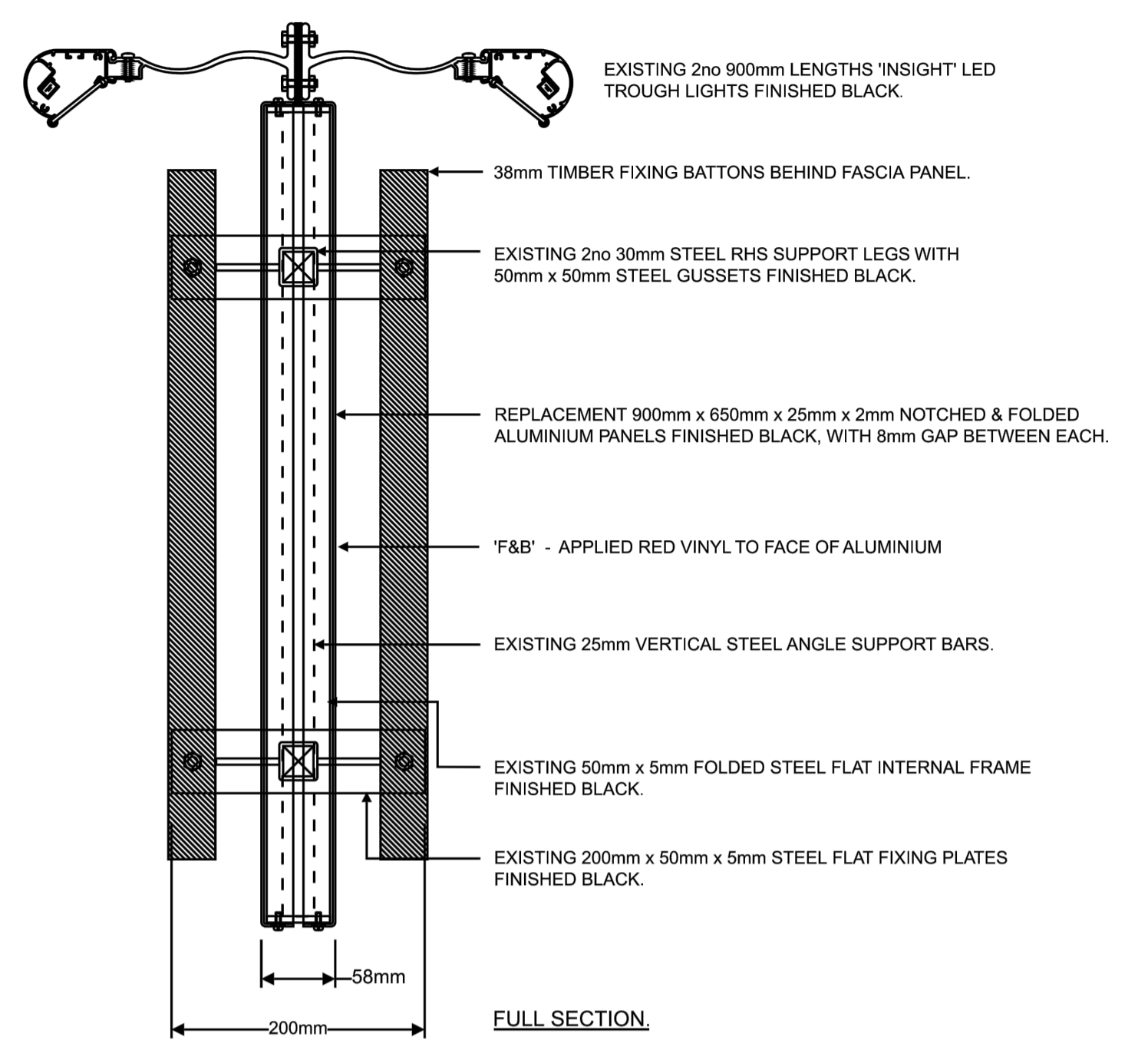
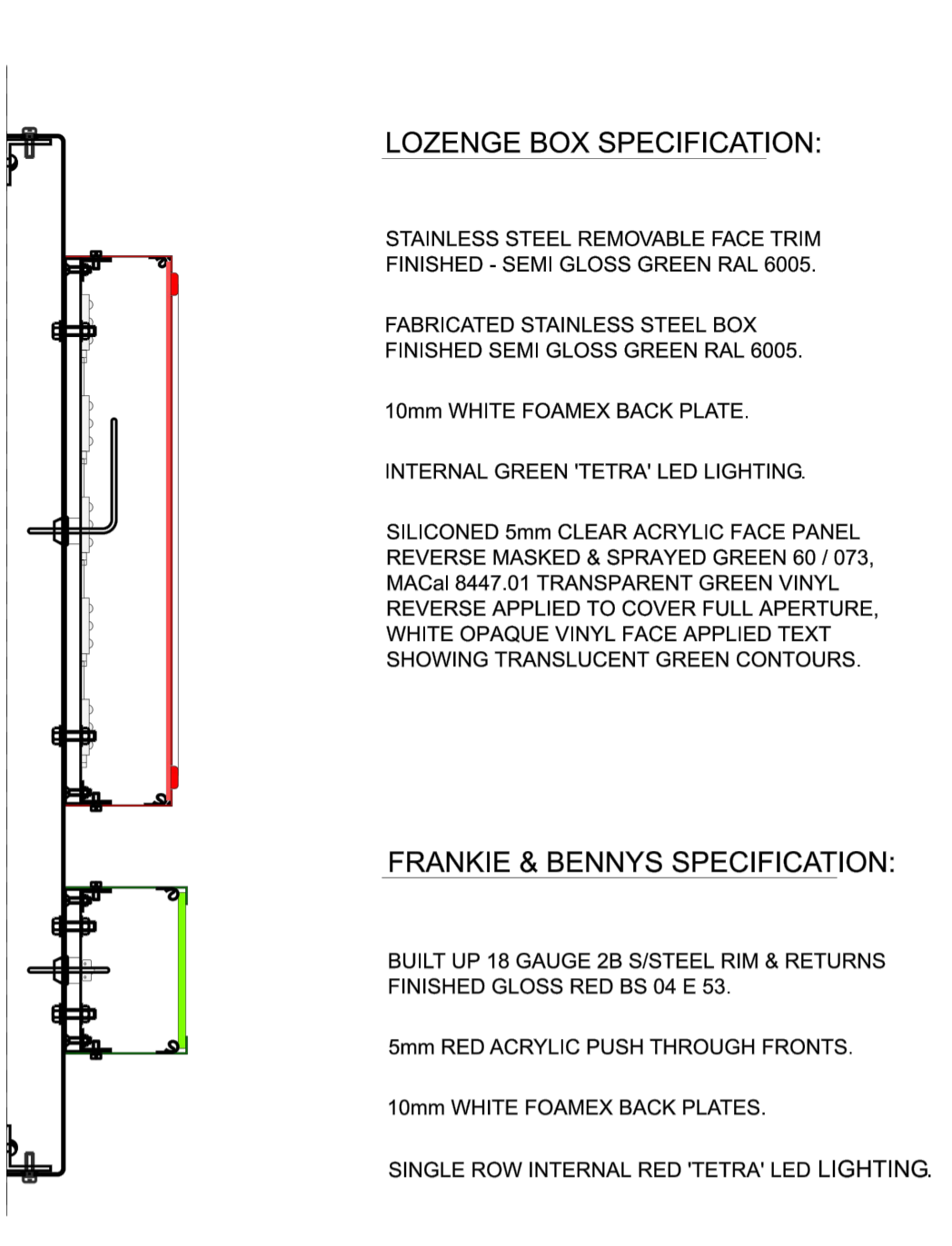


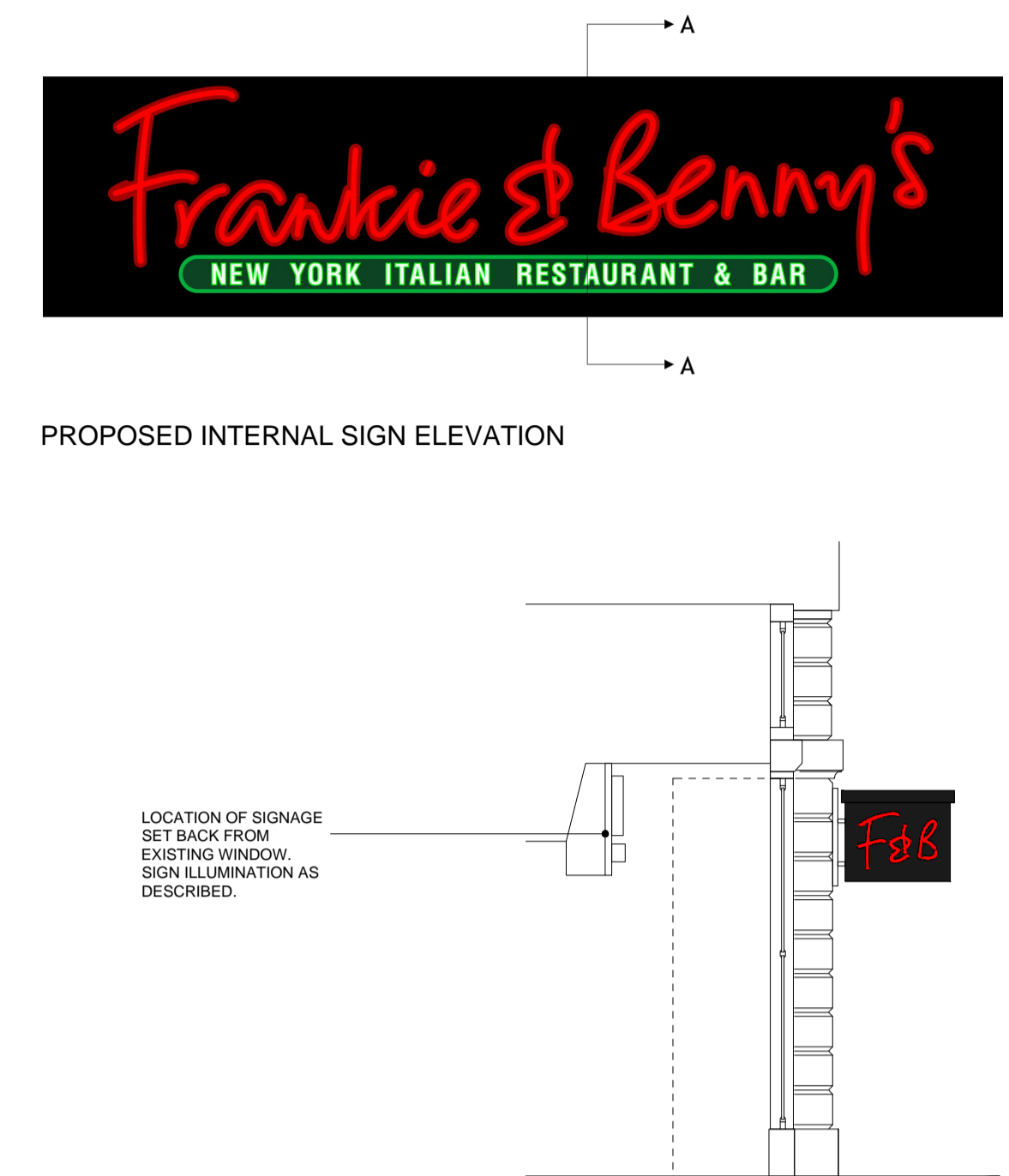
SITE LOCATION PLAN 1:1250



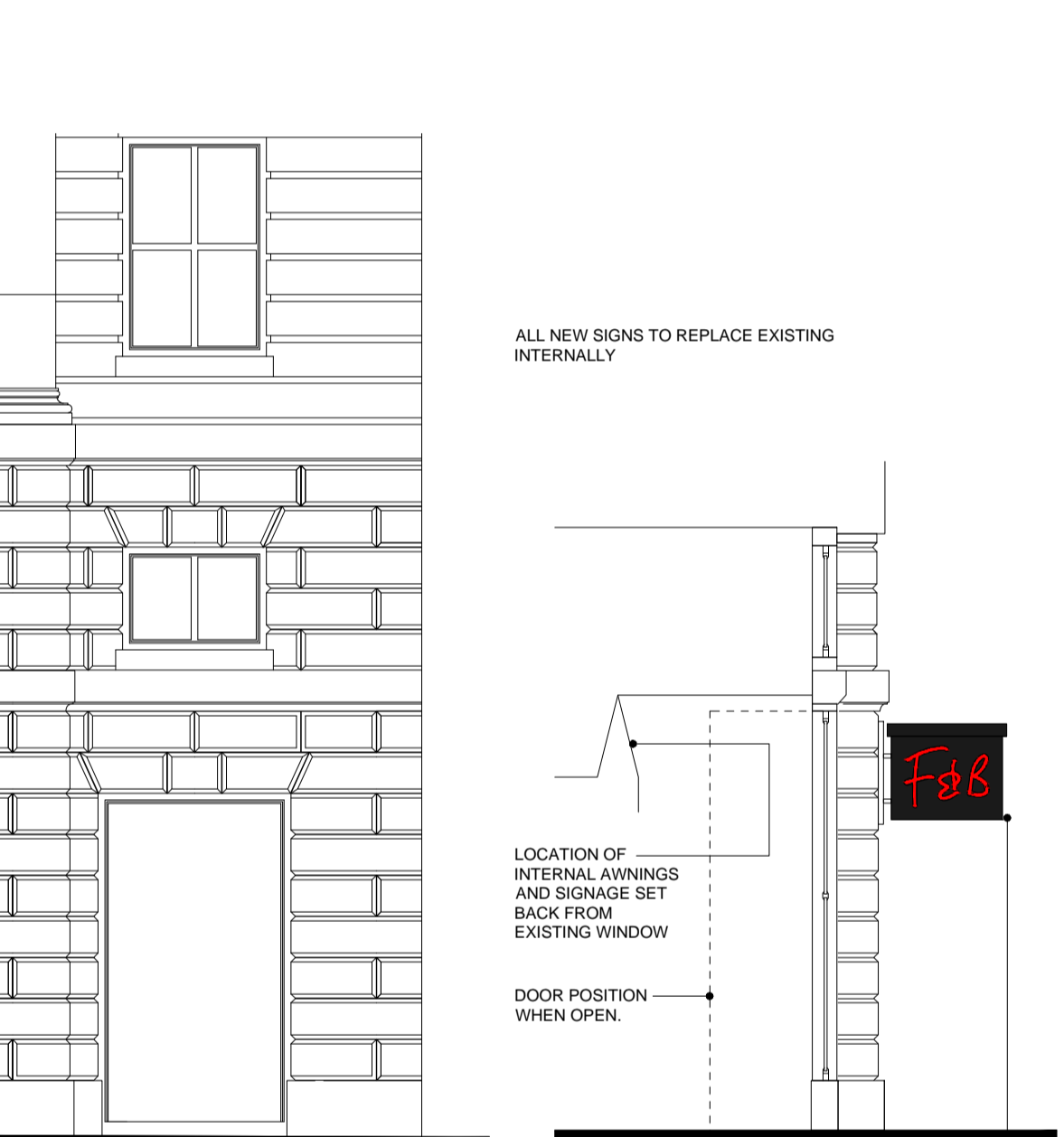
PROPOSED PROJECTING SIGN N.T.S



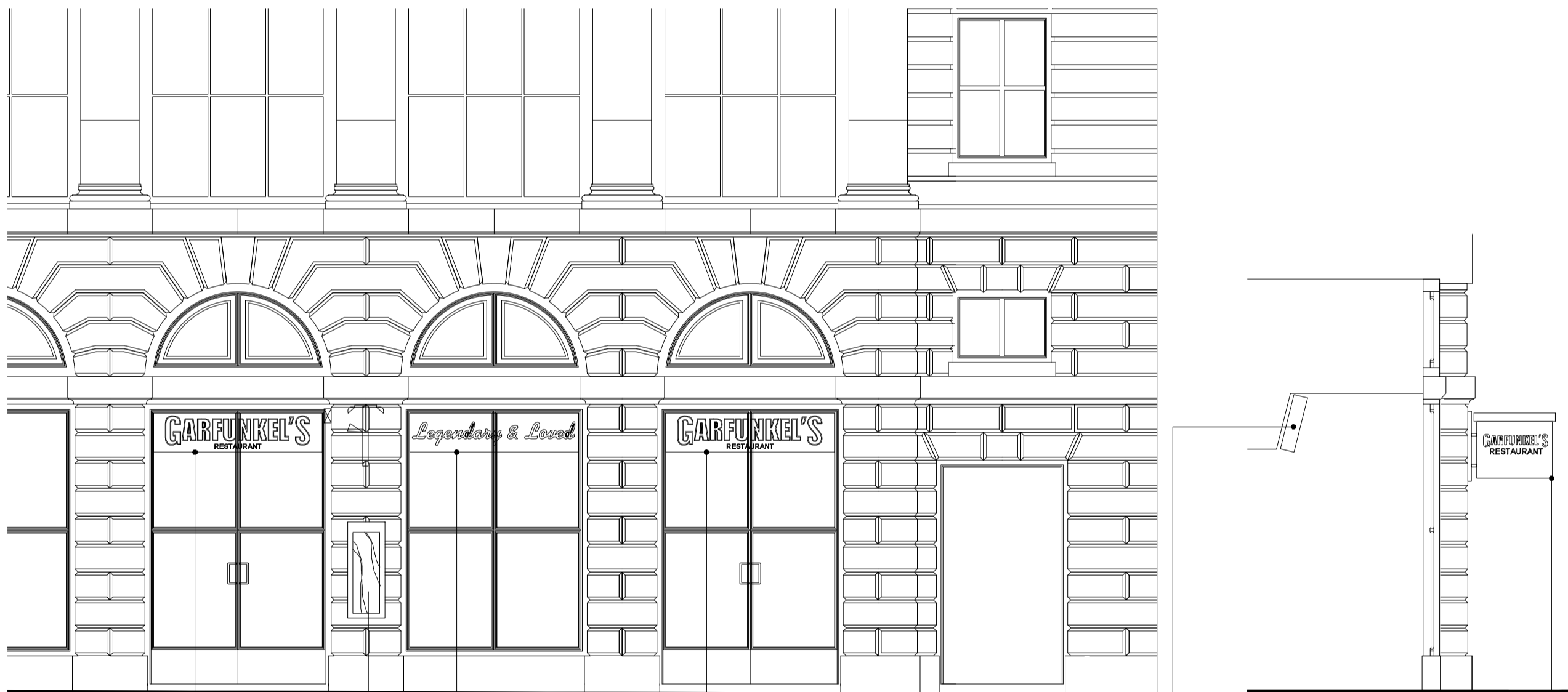
PROPOSED INTERNAL SIGN SECTION N.T.S



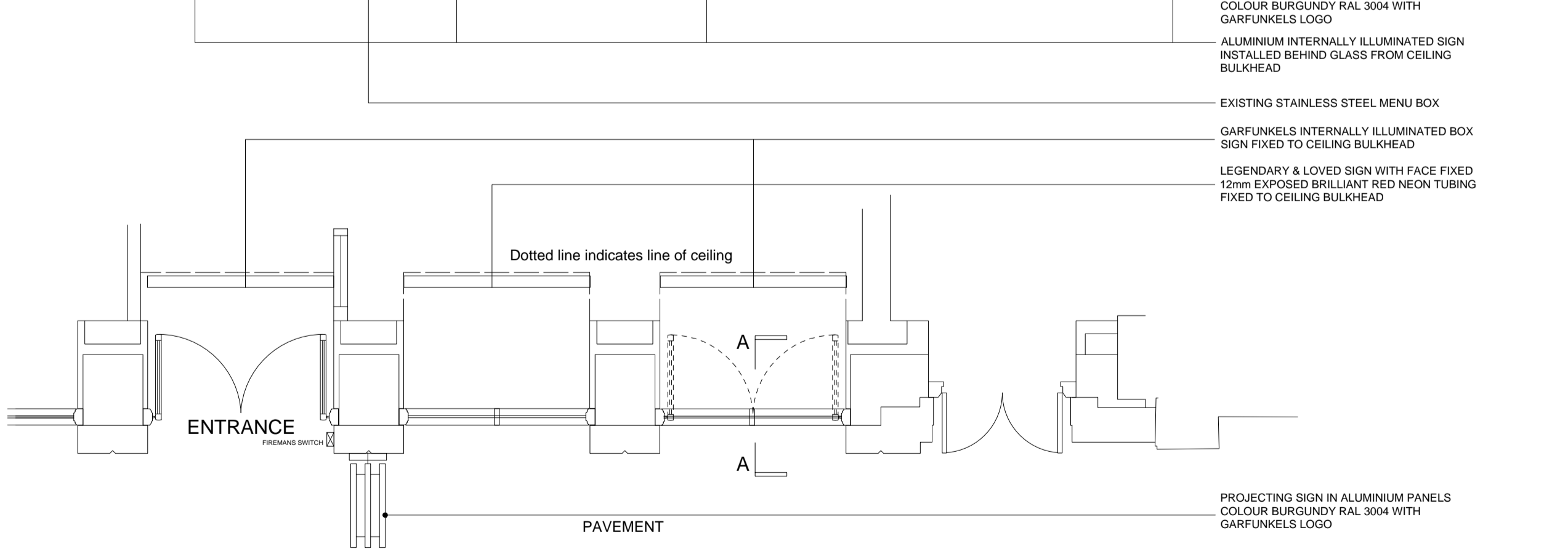
PROPOSED INTERNAL SIGN ELEVATION



PROPOSED SHOP FRONT SECTION



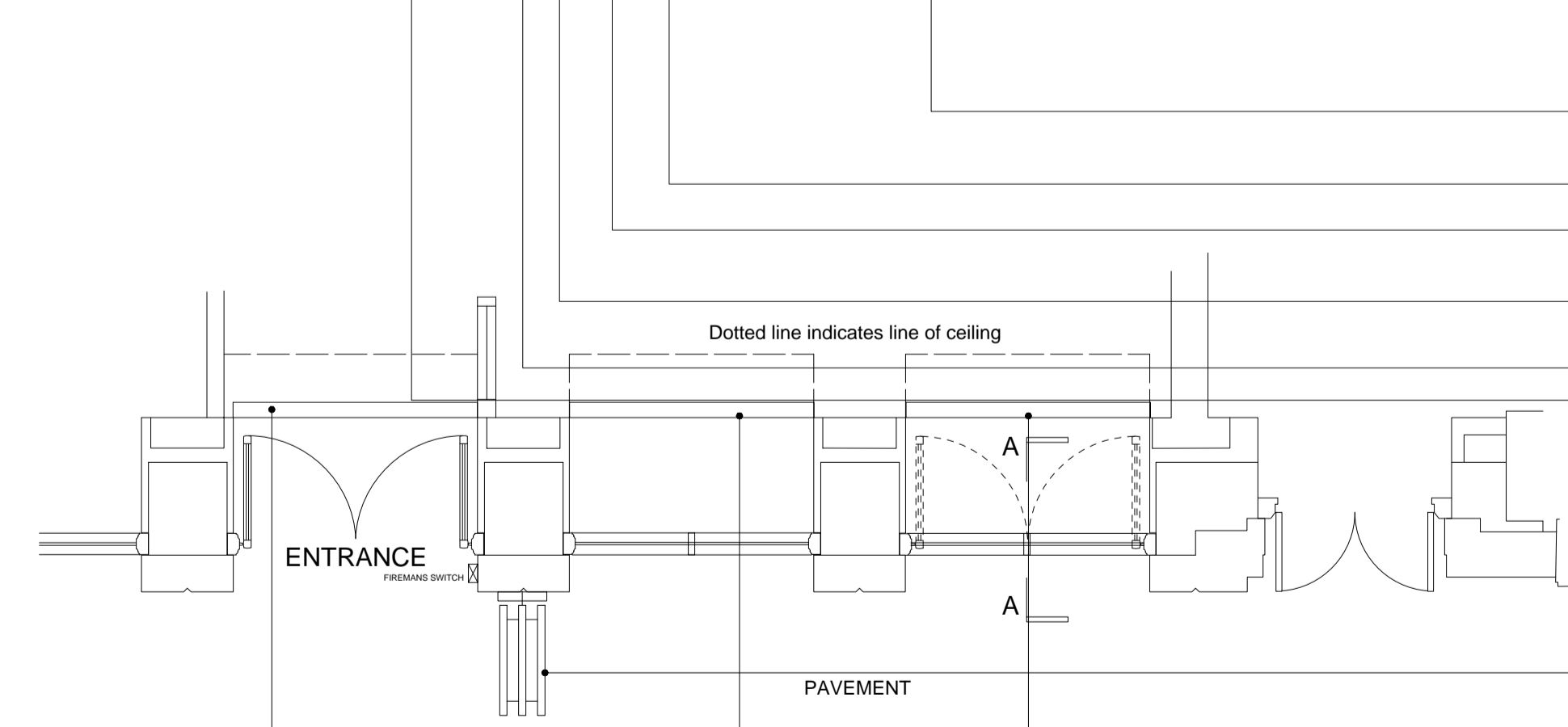
EXISTING SHOP FRONT ELEVATION



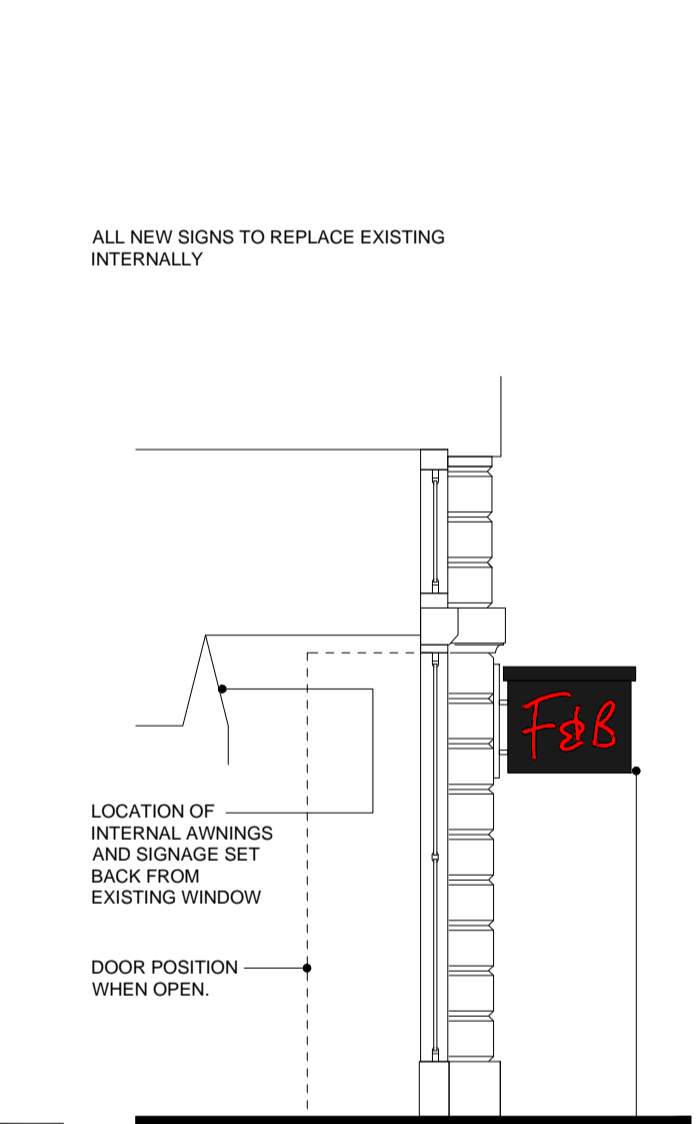
EXISTING SHOP FRONT SECTION



PROPOSED SHOP FRONT ELEVATION



PROPOSED SHOP FRONT SECTION



PROPOSED SHOP FRONT PLAN 1:50



EXISTING SHOP FRONT PLAN 1:50

**LOZENGE BOX SPECIFICATION:**

- STAINLESS STEEL REMOVABLE FACE TRIM FINISHED - SEMI GLOSS GREEN RAL 6005.
- FABRICATED STAINLESS STEEL BOX FINISHED SEMI GLOSS GREEN RAL 6005.
- 10mm WHITE FOAMEX BACK PLATE.
- INTERNAL GREEN 'TETRA' LED LIGHTING.
- SILICONED 5mm CLEAR ACRYLIC FACE PANEL REVERSE MASKED & SPRAYED GREEN 60 / 073, MACAL 8447.01 TRANSPARENT GREEN VINYL REVERSE APPLIED TO COVER FULL APERTURE, WHITE OPAQUE VINYL FACE APPLIED TEXT SHOWING TRANSLUCENT GREEN CONTOURS.

**FRANKIE & BENNY'S SPECIFICATION:**

- BUILT UP 18 GAUGE 2B S/STEEL RIM & RETURNS FINISHED GLOSS RED BS 04 E 53.
- 5mm RED ACRYLIC PUSH THROUGH FRONTS.
- 10mm WHITE FOAMEX BACK PLATES.
- SINGLE ROW INTERNAL RED 'TETRA' LED LIGHTING.



PROPOSED SHOP FRONT SECTION

ALL NEW SIGNS TO REPLACE EXISTING INTERNALLY

LOCATION OF INTERNAL AWINGS AND SIGNAGE SET BACK FROM EXISTING WINDOW

DOOR POSITION WHEN OPEN.

PROPOSED SHOP FRONT SECTION

EXISTING SIGN RE CLAD WITH ALUMINIUM PANELS FINISHED IN BLACK, WITH 'F & B' LOGO IN RED VINYL LETTERING TO BOTH FACES, AND EXTERNALLY ILLUMINATED FROM ABOVE.

NEW INTERNAL ACRYLIC AWINGS WITH BRAND LOGOS LETTERING APPROXIMATELY 130mm HIGH VALANCE IN GREEN WITH NARROW RED & WHITE STRIPES

NEW FRANKIE & BENNY'S BRAND STANDARD SIGNAGE WITH LETTERING INTERNALLY ILLUMINATED.

NEW POWDER COATED ALUMINIUM BACK PANEL IN BLACK FINISH.

EXISTING SIGN RE CLAD WITH ALUMINIUM PANELS FINISHED IN BLACK, WITH 'F & B' LOGO IN RED VINYL LETTERING TO BOTH FACES, AND EXTERNALLY ILLUMINATED FROM ABOVE.

NEW MENU CASE LOCATION

VINYL LETTERING TO SHOP FRONT WINDOWS APPLIED TO THE INSIDE FACE OF THE WINDOW.

EXISTING DOORS AND WINDOW FRAMES TO REMAIN AS EXISTING

EXISTING SIGN RE CLAD WITH ALUMINIUM PANELS FINISHED IN BLACK, WITH 'F & B' LOGO IN RED VINYL LETTERING TO BOTH FACES, AND EXTERNALLY ILLUMINATED FROM ABOVE.

NEW INTERNAL ACRYLIC AWINGS WITH BRAND LOGOS LETTERING APPROXIMATELY 130mm HIGH VALANCE IN GREEN WITH NARROW RED & WHITE STRIPES

NEW FRANKIE & BENNY'S BRAND STANDARD SIGNAGE WITH LETTERING INTERNALLY ILLUMINATED.

A ADDITIONAL INFORMATION ADDED, SECTION THROUGH SHOP FRONT AT ILLUMINATED SIGN, SIGN DETAILS ADDED

rev	description	date

client  
**the restaurant group plc**

project  
 Garfunkel's re branding to Frankie & Benny's  
 267 Tottenham Court Road,  
 Westminster  
 London  
 W1T 7RQ

drawing title  
 Existing and Proposed  
 Shop Front Plans & Elevation

project ref.	scale	drawing No.
	as noted @A1	020
drawn	date	rev.
JOwen	23.05.16	A

**INTERIORS UK**  
 SPECIALIST LEISURE CONTRACTORS

The New Oakes  
 Wellington Street  
 Oakes  
 Huddersfield  
 HD3 3EP

t: 01484 646065  
 f: 01484 645852  
 www.interiors-uk.net

