



View from main living area towards gardens

Internal Spatial Arrangements

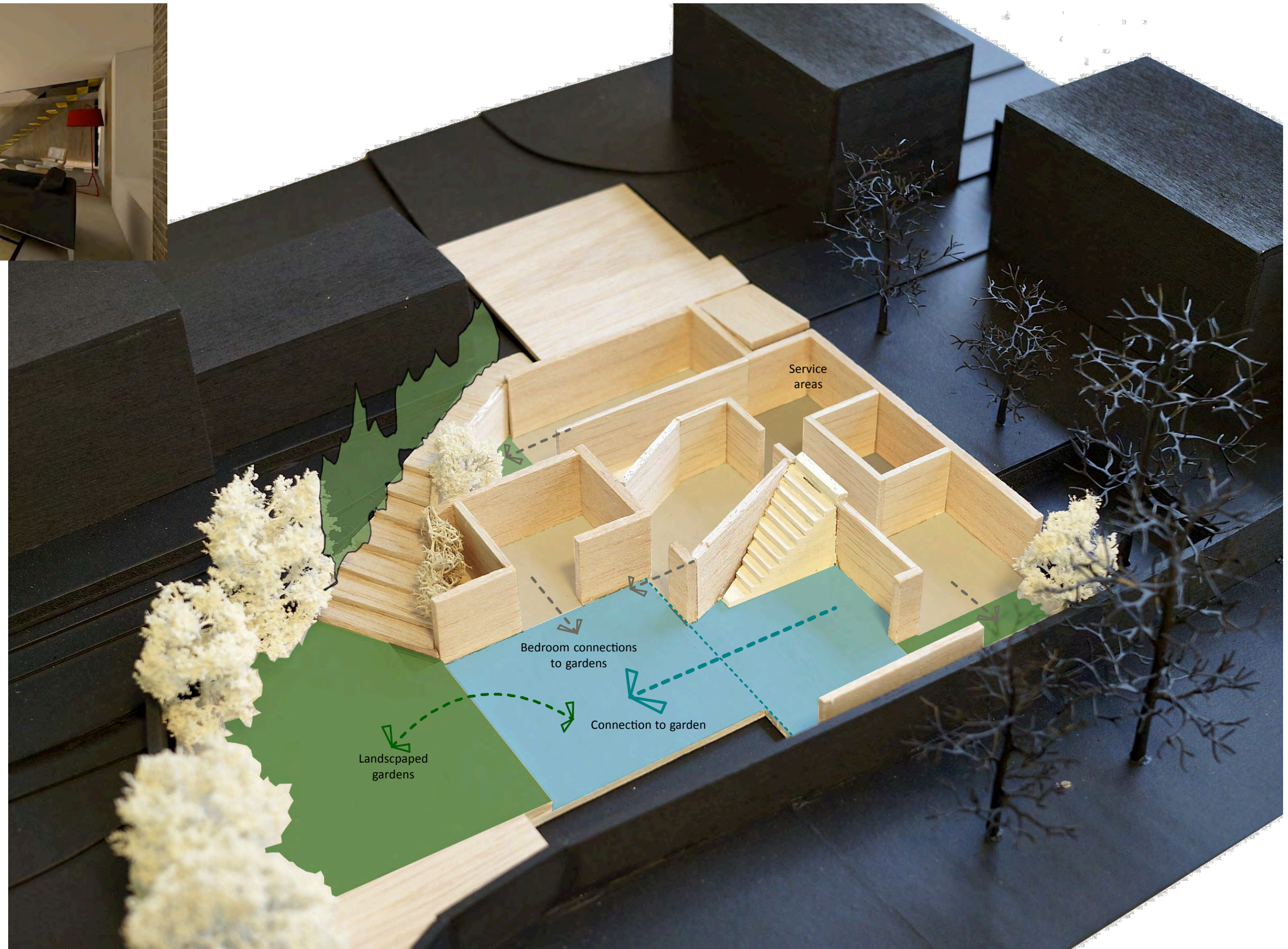
Lower Ground Floor

The lower Ground Floor contains both living and private bedroom spaces, together with a series of courtyards and large open garden space.

The scheme has been designed to make the most efficient use of the site while respecting the privacy of the neighbouring dwellings and adjacent Private Open Space designation. The lower ground floor areas utilise the topographical slope of the site by excavating into this and without significantly increasing the visual bulk of the building.

The series of courtyards maintain the expanse of planted areas within the site and allow each bedroom to have a private view / access into these areas. By being located on the lower ground floor they do not visually impact on the overall mass of the building.

A lower ground floor main living area allows direct access into the main garden and creates a strong connection between the living levels and visual connection through the building.



Concept design development model