

Existing view from No.6

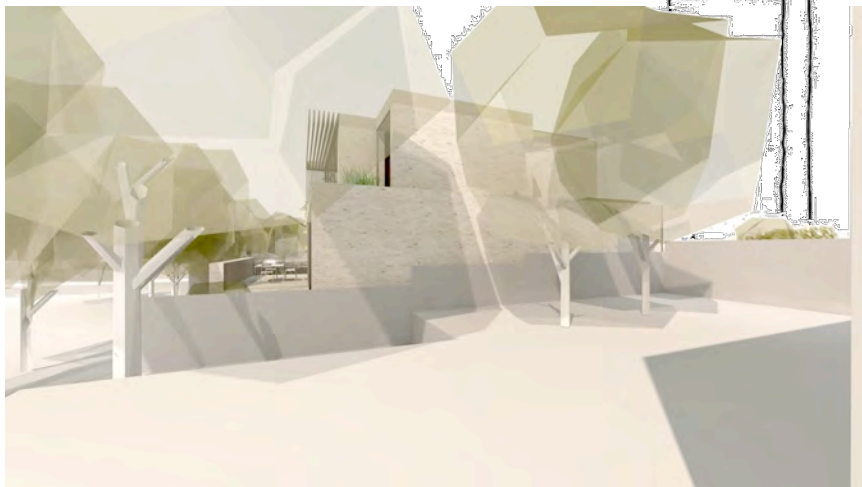
### Privacy + Overlooking

The proposals maintain the solidity of the existing building towards the neighbours to reduce overlooking and maintain privacy to all.

The design maximises controlled natural daylight and sunlight throughout the house, balanced with careful consideration to window placement that avoids overlooking to neighbours.

Windows to the ground floor North West section and West facing windows to the top floor incorporate a bronze fin concept to allow natural light into the spaces and glimpses out while maintaining the privacy for neighbouring buildings and the occupiers.

Views out from the new building are predominantly to the South and South West over the existing 'Open Space' and the extensive mature planting.



Proposed view from No.6

