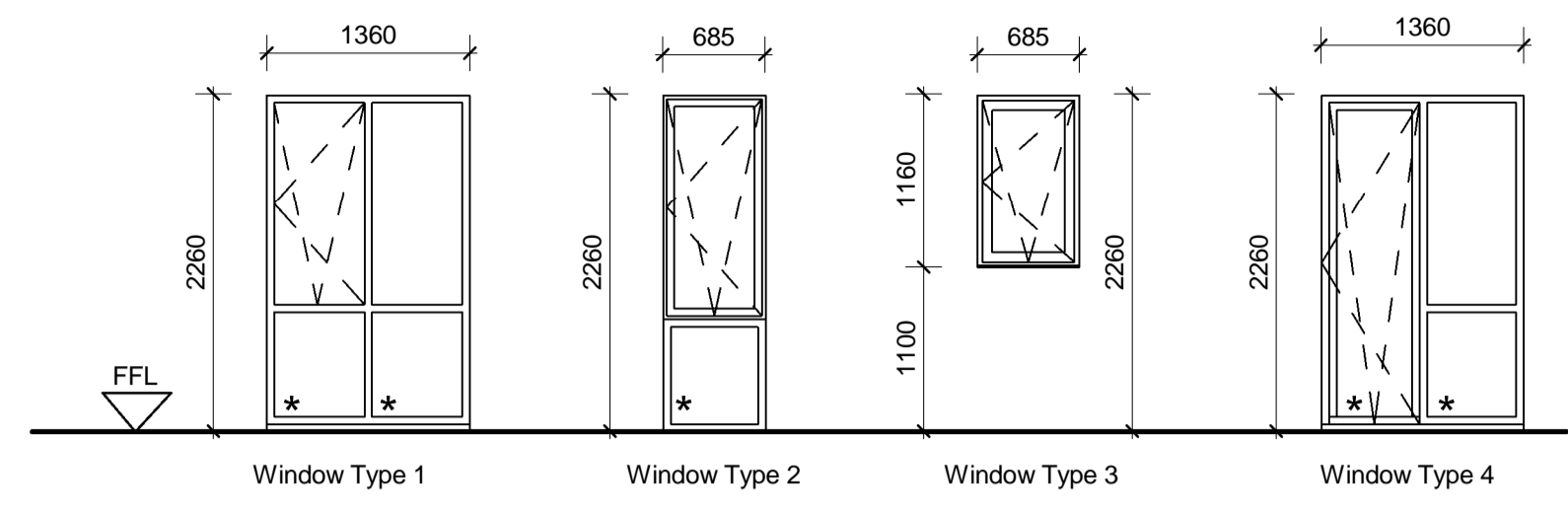


All dimensions to be verified on site by Main Contractor before the start of any shop drawings or work whatsoever either on their own behalf or that of sub-contractors.

Report any discrepancies to the Contract Administrator at once.
This drawing is to be read with all relevant Architect's and Engineer's drawings and other relevant information.

© Ingleton Wood LLP

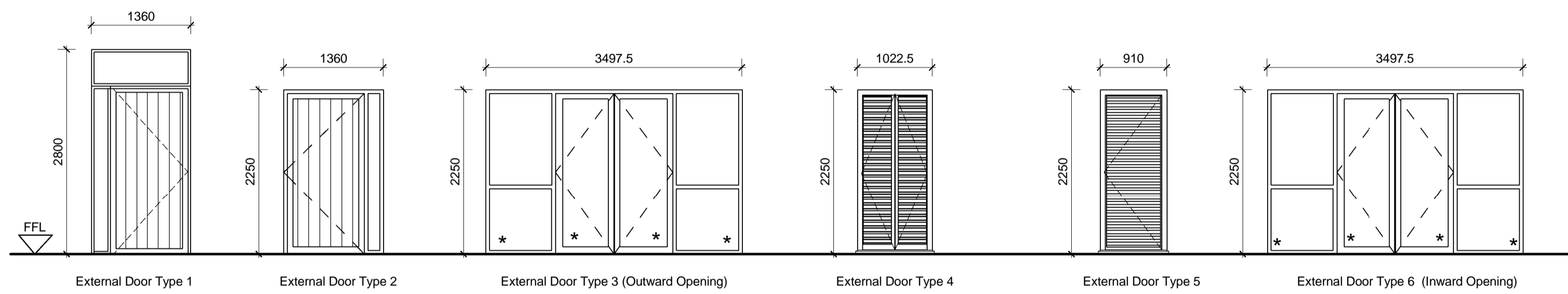
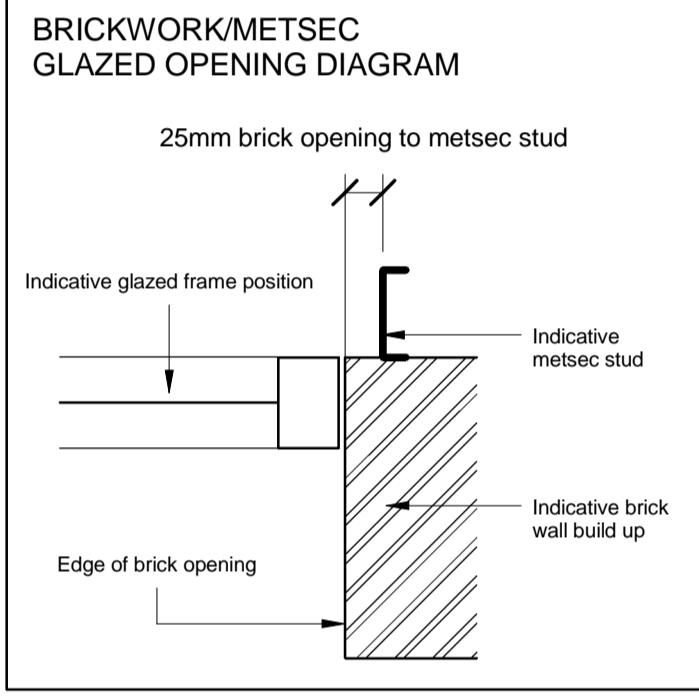
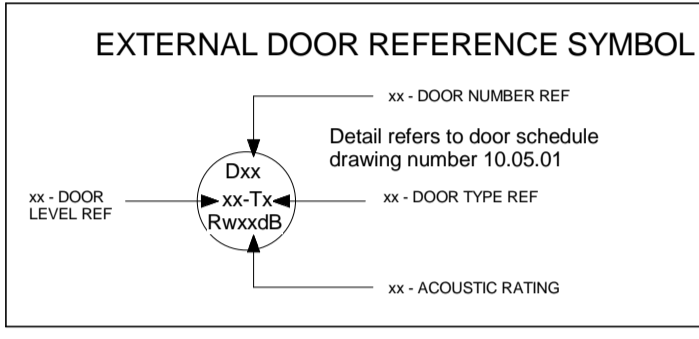
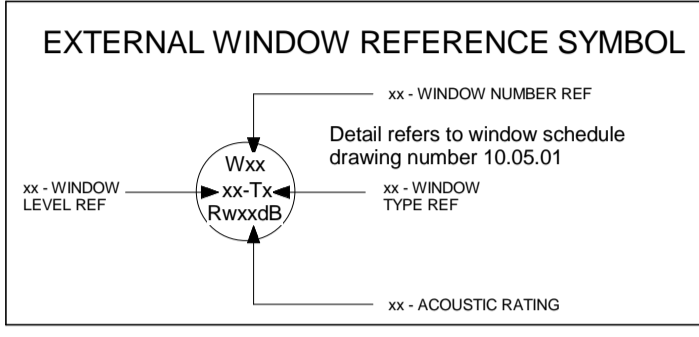
LEGEND: DO NOT SCALE



External Window Types * Refer to notes on Part K
1 : 50

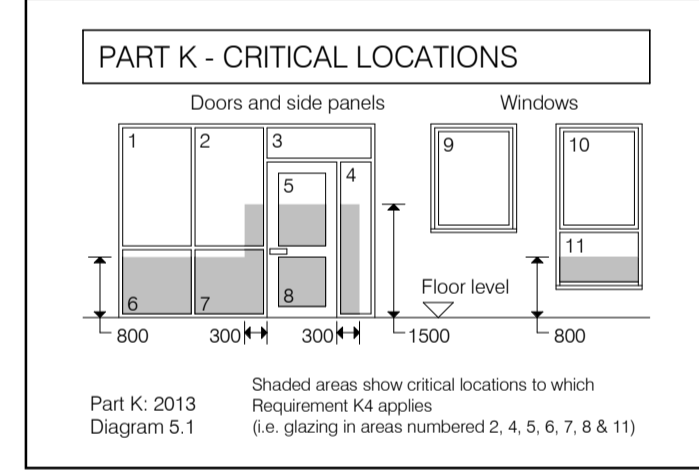
External Window Schedule									
Window No.	Window Type	Sill Height	SO Width	SO Height	Level	Frame Material	Security Rating	Comments	AcousticRating
Level 00									
01	4	0	1360	2260	Level 00	RAL 7030 (stone grey)	PAS24		Rw28dB
Level 01									
01	1	0	1360	2260	Level 01	RAL 7030 (stone grey)			Rw28dB
02	1	0	1360	2260	Level 01	RAL 7030 (stone grey)			Rw28dB
03	1	0	1360	2260	Level 01	RAL 7030 (stone grey)			Rw28dB
04	1	0	1360	2260	Level 01	RAL 7030 (stone grey)			Rw28dB
05	3	1100	685	1160	Level 01	RAL 7030 (stone grey)	PAS24		Rw28dB
06	1	0	1360	2260	Level 01	RAL 7030 (stone grey)			Rw28dB
07	1	0	1360	2260	Level 01	RAL 7030 (stone grey)			Rw28dB
Level 02									
01	1	0	1360	2260	Level 02	RAL 7030 (stone grey)			Rw28dB
02	1	0	1360	2260	Level 02	RAL 7030 (stone grey)			Rw28dB
03	1	0	1360	2260	Level 02	RAL 7030 (stone grey)			Rw28dB
04	1	0	1360	2260	Level 02	RAL 7030 (stone grey)			Rw28dB
05	2	0	685	2260	Level 02	RAL 7030 (stone grey)			Rw28dB
06	1	0	1360	2260	Level 02	RAL 7030 (stone grey)			Rw28dB
07	1	0	1360	2260	Level 02	RAL 7030 (stone grey)			Rw28dB

GENERAL NOTES
- See detail drawing series 35.171 for window head/jamb and sill details.
- Structural opening width and heights indicated in schedule are brick dimensioned openings.



External Door Types * Refer to notes on Part K
1 : 50

External Door Schedule									
Number	Type	Level	SO Width	SO Height	Security Rating	Frame Material	Comments	AcousticRating	
Level 00									
01	01	Level 00	1360	2800	PAS24	RAL 7030 (stone grey)			
02	06	Level 00	3498	2250	PAS24	RAL 7030 (stone grey)	Inward Opening		
03	05	Level 00	910	2250	PAS24	RAL 7030 (stone grey)			
04	04	Level 00	1023	2250	PAS24	RAL 7030 (stone grey)			
05	04	Level 00	1023	2250	PAS24	RAL 7030 (stone grey)			
06	05	Level 00	910	2250	PAS24	RAL 7030 (stone grey)			
07	01	Level 00	1360	2800	PAS24	RAL 7030 (stone grey)			
Level 01									
01	03	Level 01	3498	2250		RAL 7030 (stone grey)	Outward Opening		
02	02	Level 01	1360	2250	PAS24	RAL 7030 (stone grey)			
Level 02									
01	03	Level 02	3498	2250		RAL 7030 (stone grey)	Outward Opening		



E	20.04.16	Window & doors references updated	LS	JR
D	08.04.16	Acoustic rating added to windows	LS	JR
C	23.02.16	Window swing added to type 1	LS	JR
B	22.03.16	Window type 4 shown	LS	JR
A	16.02.16	First Issue	LS	JR

Rev: | Date: | Description: | Chk: | Apr: |
Scale @ A1: | Issuing Office: | Project No: |
As indicated | London | 84923
Status: | Purpose of Issue: |
S4 | Construction

Ingleton Wood
Vision, form and function
London
1 Alie Street
London E1 8DE
T: 020 7680 4400
www.ingletonwood.co.uk

Billericay
Cambridge
Colchester
London
Norwich

Project:
Regents Park Estate
Plot 9 - St. Bedes Mews
London
NW1 4DY

Drawing Title:
External Window & Door Schedule

Client:
Lovell Partnership Ltd.