

Typical Section of External Wall with Cast in channel masonry support system (Stretcher Bond) & Separating Floor between Flat to Flat

1 1:5

PROPOSED U-VALUE TO ACHIEVE	
Ground Floor	0.11 W/m <sup>2</sup> .K
External Wall - Brickwork with Mestic	0.10 W/m <sup>2</sup> .K
External Wall - Brickwork with Blockwork	0.11 W/m <sup>2</sup> .K
Separating Walls: Flat / Communal Areas	TBC
Separating Walls: Flat / Lift Shaft	TBC
Separating Walls: Flat / Flat Party Walls	0.0*
Roof	0.11 W/m <sup>2</sup> .K
External Opaque Doors	1.0 W/m <sup>2</sup> .K
External Windows	1.5 W/m <sup>2</sup> .K (g-value of 0.63)
External Glazed Doors	1.5 W/m <sup>2</sup> .K (g-value of 0.63)
AIR PREMEABILITY	4m <sup>3</sup> /m <sup>2</sup> .h
* Cavities to be fully filled with mineral wool	

Masonry Wall Tie Spacing	Horizontal Spacing	Vertical Spacing
	Distance along wall	Max. 900mm
Distance from Openings, Roof Verges, Movement Joints	Max. 225mm	Max. 300mm

Note: Wall ties along wall may correspond to table above or alternatively be spaced such as not to be less than 2.5 ties/m<sup>2</sup>. Wall ties to be installed to manufacturer instructions

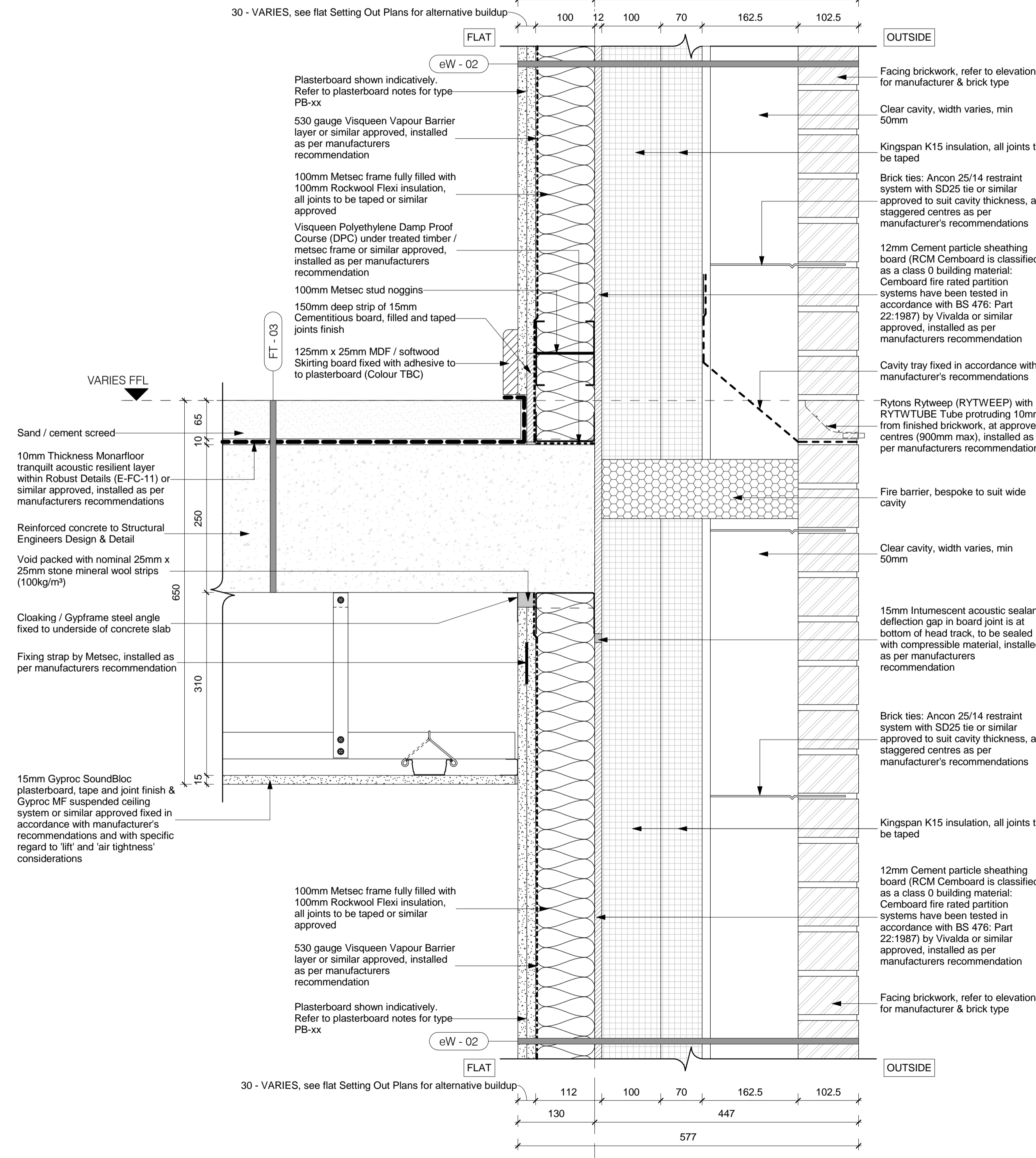
ALL JUNCTIONS BETWEEN INTERNAL CEILING & INTERNAL WALLS AND PENETRATIONS IN AIR BARRIER TO BE SEALED WITH FLEXIBLE SEALANT.

ALL PLASTERBOARD JOINT LOCATIONS TO BE TAPED AND JOINT FINISH.

ALL PLASTERBOARD ON DABS TO HAVE CONTINUOUS RIBBON OF ADHESIVE AROUND ALL OPENINGS, ALONG TOP AND BOTTOM OF WALL, AND AT INTERNAL AND EXTERNAL CORNERS.

DETAILS TO BE READ IN CONJUNCTION WITH SECTIONS & GA PLANS - REFER TO SUITABLE PLASTERBOARD TYPE.

**NOTE**  
Wall tie setouts shown indicatively. Set outs & distances between ties to be installed as per manufacturer instructions



Typical Section of External Wall (Stretcher Bond) & Separating Floor between Flat to Flat

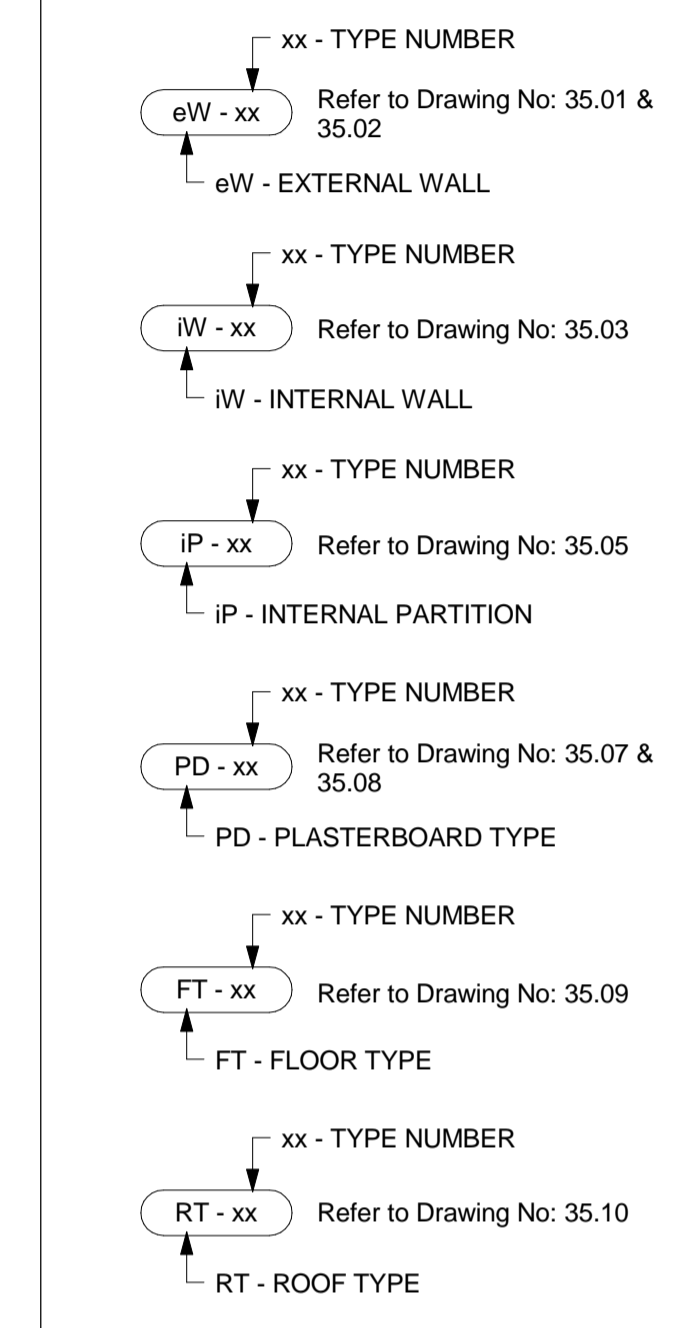
2 1:5

All dimensions to be verified on site by Main Contractor before the start of any shop drawings or work whatsoever either on their own behalf or that of sub-contractors.  
Report any discrepancies to the Contract Administrator at once.  
This drawing is to be read with all relevant Architect's and Engineer's drawings and other relevant information.  
© Ingleton Wood LLP

LEGEND: DO NOT SCALE

**GENERAL NOTES**  
This drawing should be read in conjunction with all relevant consultants drawings and specifications.  
Setting out dimensions and sizing of all RC elements should be taken from structural engineer's drawings and documentation.

**EXTERNAL & INTERNAL WALL SYMBOLS**



B	22.04.16	Amended in line with comments by Lovell	KP	JR
A	15.04.16	First Issue & Construction Issue	KP	JR
Rev:	Date:	Description:	Chk:	Apr:
Scale @ A1:		Issuing Office:	Project No:	
1:5		London	84923	
Status:	Purpose of Issue:			
S4	Construction			

**Ingleton Wood**  
Vision, form and function

London  
1 Alle Street  
London E1 8DE  
T: 020 7680 4400  
www.ingletonwood.co.uk

**Billericay  
Cambridge  
Colchester  
London  
Norwich**

Project:  
Regents Park Estate  
Plot 2 - Rydal Water Open Space  
London  
NW1 3EE

Drawing Title:  
External Wall Details - Sheet 06

Client:  
Lovell Partnership Ltd.

File Ref:	Revision:
RWOS - IW - XX - ZZ - DR - A - 35.46	B