

Masonry Wall Tie Spacing		
	Horizontal Spacing	Vertical Spacing
Distance along wall	Max. 900mm	Max. 450mm
Distance from Openings, Roof Verges, Movement Joints	Max. 225mm	Max. 300mm

Note: Wall ties along wall may correspond to table above or alternatively be spaced such as not to be less than 2.5 ties/m². Wall ties to be installed to manufacturer instructions

ALL JUNCTIONS BETWEEN INTERNAL CEILING & INTERNAL WALLS AND PENETRATIONS IN AIR BARRIER TO BE SEALED WITH FLEXIBLE SEALANT.

ALL PLASTERBOARD JOINT LOCATIONS TO BE TAPED AND JOINT FINISH.

ALL PLASTERBOARD ON DABS TO HAVE CONTINUOUS RIBBON OF ADHESIVE AROUND ALL OPENINGS, ALONG TOP AND BOTTOM OF WALL, AND AT INTERNAL AND EXTERNAL CORNERS.

DETAILS TO BE READ IN CONJUNCTION WITH SECTIONS & GA PLANS - REFER TO SUITABLE PLASTERBOARD TYPE.

NOTE

Wall tie setbacks shown indicatively. Set outs & distances between ties to be installed as per manufacturer instructions

PROPOSED U-VALUE TO ACHIEVE	
Ground Floor	0.11 W/m ² .K
External Wall - Brickwork with Mastic	0.10 W/m ² .K
External Wall - Brickwork with Blockwork	0.11 W/m ² .K
Separating Walls: Flat / Communal Areas	TBC
Separating Walls: Flat / Lift Shaft	TBC
Separating Walls: Flat / Flat Party Walls	0.0*
Roof	0.11 W/m ² .K
External Opaque Doors	1.0 W/m ² .K
External Windows	1.5 W/m ² .K (g-value of 0.63)
External Glazed Doors	1.5 W/m ² .K (g-value of 0.63)
AIR PERMEABILITY	4m ³ /m ² .h

* Cavities to be fully filled with mineral wool

All dimensions to be verified on site by Main Contractor before the start of any shop drawings or work whatsoever either on their own behalf or that of sub-contractors.

Report any discrepancies to the Contract Administrator at once.

This drawing is to be read with all relevant Architect's and Engineer's drawings and other relevant information.

© Ingleton Wood LLP

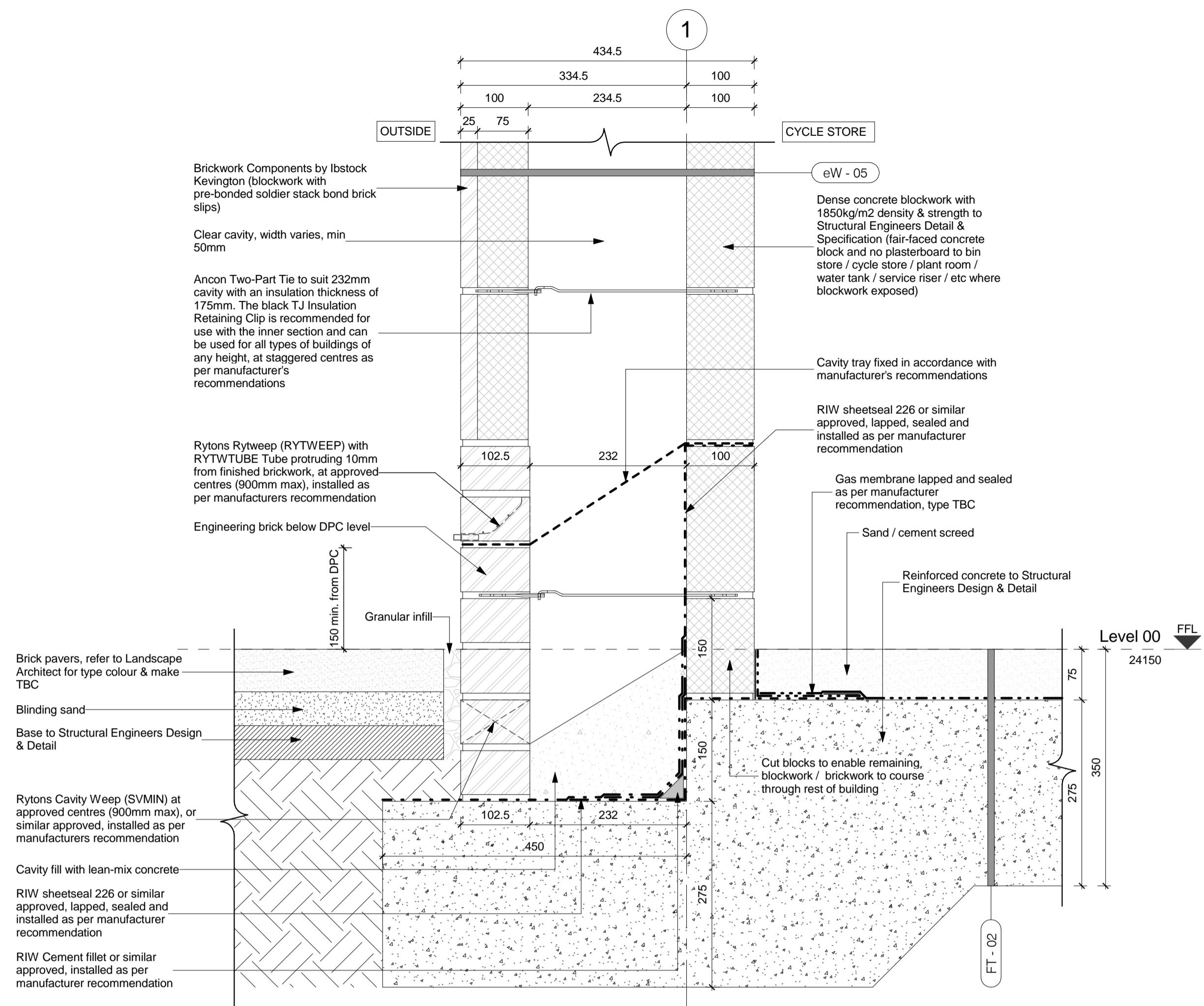
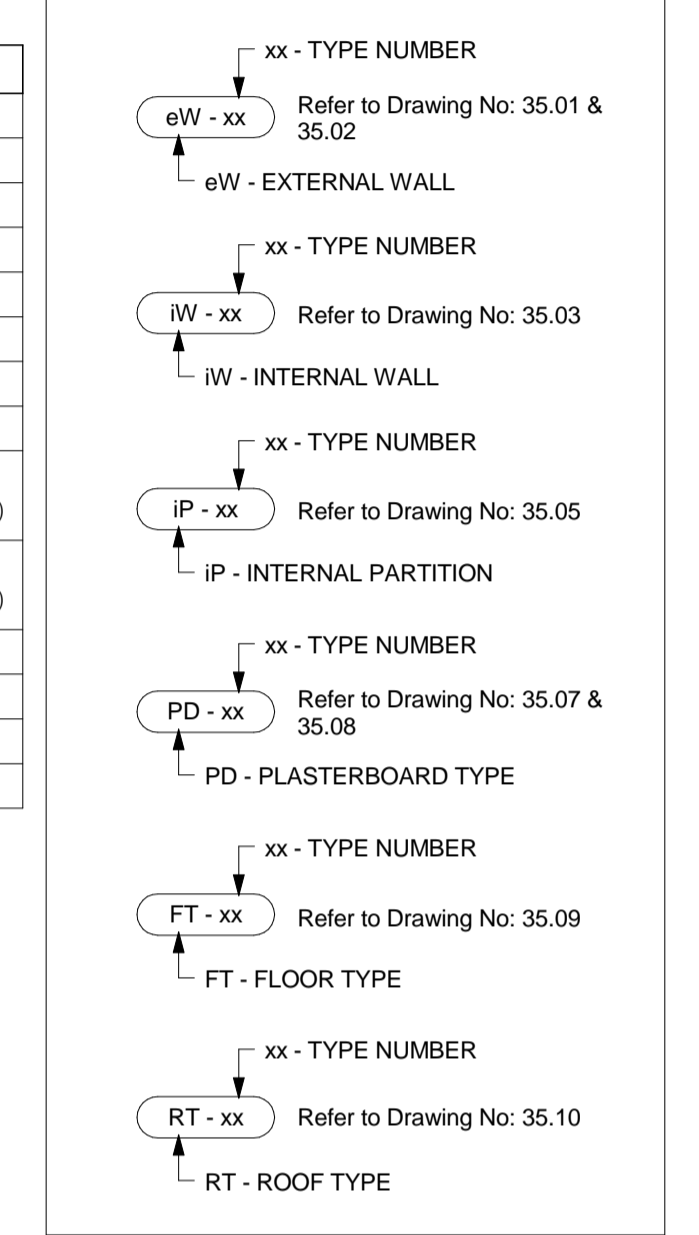
LEGEND: DO NOT SCALE

GENERAL NOTES

This drawing should be read in conjunction with all relevant consultants drawings and specifications.

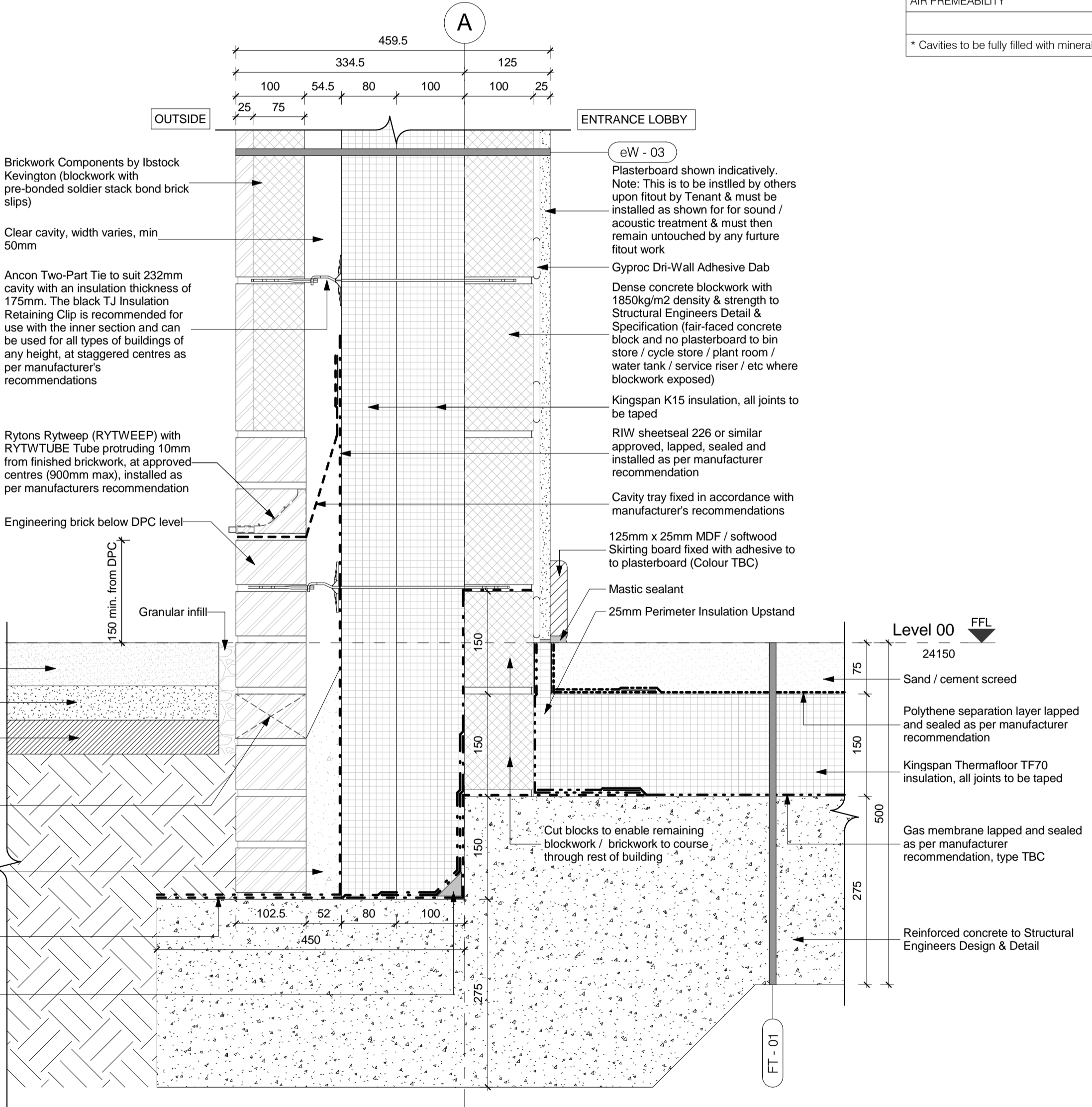
Setting out dimensions and sizing of all RC elements should be taken from structural engineer's drawings and documentation.

EXTERNAL & INTERNAL WALL SYMBOLS



Section of Ground Floor Detail (Soldier-Course Stack Bond) @ Cycle Store, Plant Room & etc

1 1:5



Section of Ground Floor Detail (Soldier-Course Stack Bond) @ Residential Entrance Lobby / Entrance Lobby / Commercial - A1/A2/A3

2 1:5

Rev	Date	Description	Chk	Apr
E	13.05.16	CPM changed to gas membrane	KP	JP
D	22.04.16	Amended in line with comments by Lovell	KP	JR
C	15.04.16	Construction Issue	KP	JR
B	16.03.16	Detail update amendment	KP	JR
A	08.02.16	First Issue	KP	JR

Scale @ A1: 1:5 Issuing Office: London Project No: 84923

Status: S4 Purpose of Issue: Construction

Ingleton Wood Vision, form and function

London
1 Alie Street
London E1 8DE
T: 020 7680 4400
www.ingletonwood.co.uk

Project:
Regents Park Estate
Plot 2 - Rydal Water Open Space
London
NW1 3EE

Client:
Lovell Partnership Ltd.

Drawing Title:
Ground Floor Details - Sheet 03

File Ref:	Revision:
RWOS - IW - XX - ZZ - DR - A - 35.13	E