

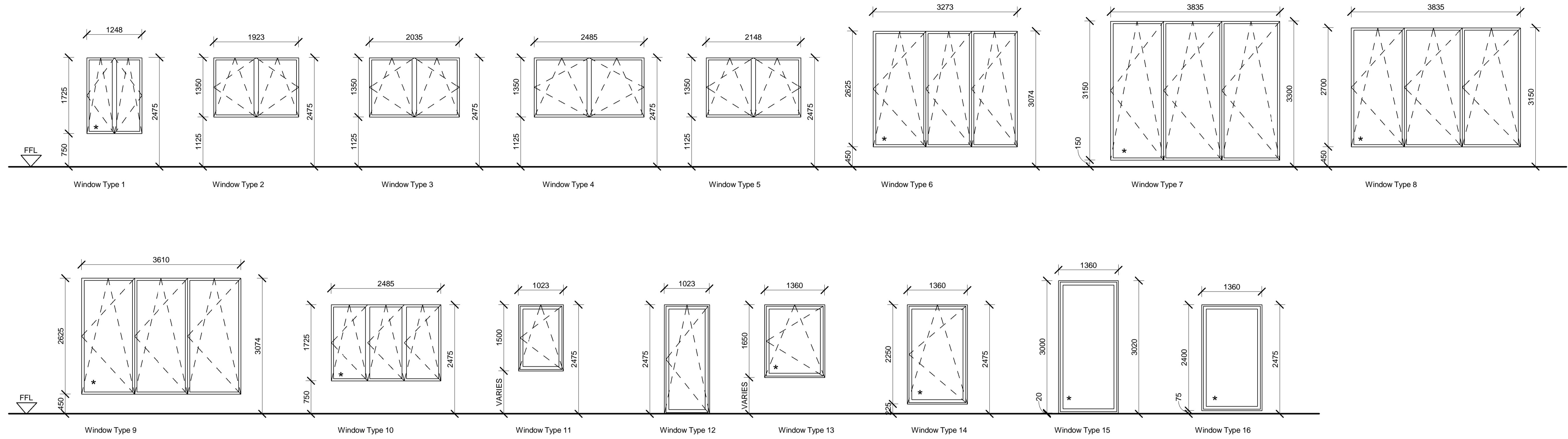
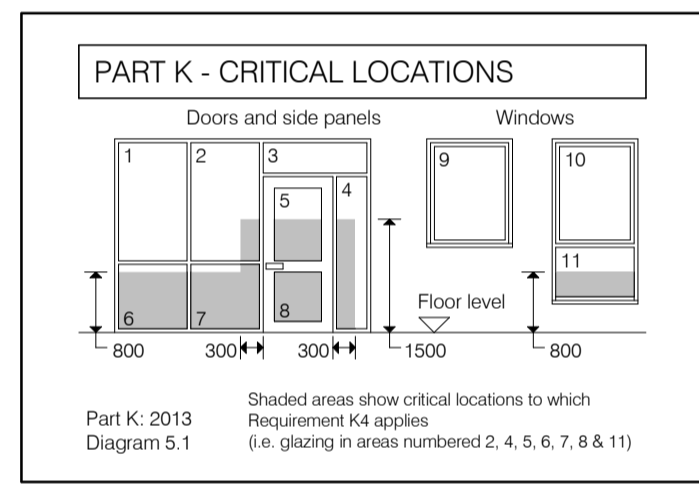
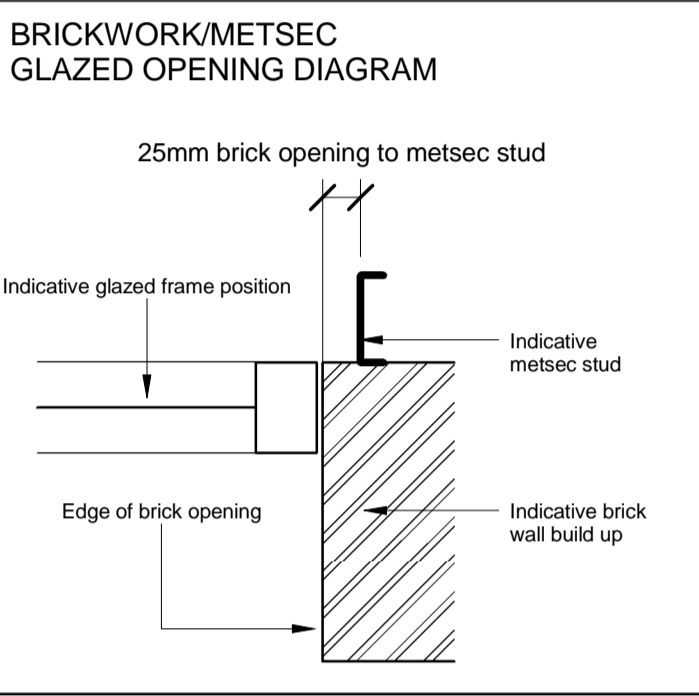
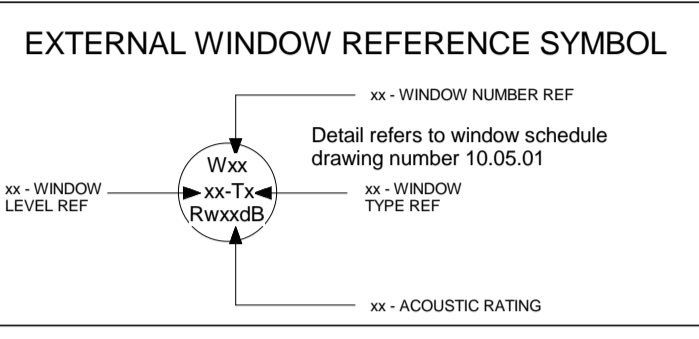
All dimensions to be verified on site by Main Contractor before the start of any shop drawings or work whatsoever either on their own behalf or that of sub-contractors.

Report any discrepancies to the Contract Administrator at once.  
This drawing is to be read with all relevant Architect's and Engineer's drawings and other relevant information.

© Ingleton Wood LLP

LEGEND: DO NOT SCALE

**GENERAL NOTES**  
- See detail drawing series 35.171 for window headjamb and sill details.  
- Structural opening width and heights indicated in schedule are brick dimensioned openings.



**External Window Types**

1 : 50

\* Refer to notes on Part K

| External Window Schedule |             |          |             |          |           |                            |                 |          |                |
|--------------------------|-------------|----------|-------------|----------|-----------|----------------------------|-----------------|----------|----------------|
| Window No.               | Window Type | Level    | Sill Height | SO Width | SO Height | Frame Material             | Security Rating | Comments | AcousticRating |
| <b>Level 00</b>          |             |          |             |          |           |                            |                 |          |                |
| 01                       | 8           | Level 00 | 450         | 3835     | 2700      | PPC Pebble Grey (RAL 7032) | PAS24           |          | Rw28dB         |
| 02                       | 9           | Level 00 | 450         | 3610     | 2625      | PPC Pebble Grey (RAL 7032) | PAS24           |          | Rw28dB         |
| 03                       | 8           | Level 00 | 450         | 3835     | 2700      | PPC Pebble Grey (RAL 7032) | PAS24           |          | Rw28dB         |
| 04                       | 6           | Level 00 | 450         | 3273     | 2625      | PPC Pebble Grey (RAL 7032) | PAS24           |          | Rw28dB         |
| <b>Level L1</b>          |             |          |             |          |           |                            |                 |          |                |
| 01                       | 15          | Level L1 | 20          | 1360     | 3000      | PPC Pebble Grey (RAL 7032) |                 |          | Rw28dB         |
| <b>Level 01</b>          |             |          |             |          |           |                            |                 |          |                |
| 01                       | 4           | Level 01 | 1125        | 2485     | 1350      | PPC Pebble Grey (RAL 7032) | PAS24           |          | Rw28dB         |
| 02                       | 4           | Level 01 | 1125        | 2485     | 1350      | PPC Pebble Grey (RAL 7032) | PAS24           |          | Rw28dB         |
| 03                       | 4           | Level 01 | 1125        | 2485     | 1350      | PPC Pebble Grey (RAL 7032) | PAS24           |          | Rw28dB         |
| 04                       | 4           | Level 01 | 1125        | 2485     | 1350      | PPC Pebble Grey (RAL 7032) | PAS24           |          | Rw28dB         |
| 05                       | 4           | Level 01 | 1125        | 2485     | 1350      | PPC Pebble Grey (RAL 7032) | PAS24           |          | Rw28dB         |
| 06                       | 4           | Level 01 | 1125        | 2485     | 1350      | PPC Pebble Grey (RAL 7032) | PAS24           |          | Rw28dB         |
| 07                       | 11          | Level 01 | -900        | 1023     | 1500      | PPC Pebble Grey (RAL 7032) | PAS24           |          | Rw28dB         |
| 08                       | 14          | Level 01 | -446        | 1360     | 2250      | PPC Pebble Grey (RAL 7032) | PAS24           |          | Rw28dB         |
| <b>Level 02</b>          |             |          |             |          |           |                            |                 |          |                |
| 01                       | 1           | Level 02 | 750         | 1248     | 1725      | PPC Pebble Grey (RAL 7032) |                 |          | Rw28dB         |
| 02                       | 1           | Level 02 | 750         | 1248     | 1725      | PPC Pebble Grey (RAL 7032) |                 |          | Rw28dB         |
| 03                       | 10          | Level 02 | 750         | 2485     | 1725      | PPC Pebble Grey (RAL 7032) |                 |          | Rw28dB         |
| 04                       | 10          | Level 02 | 750         | 2485     | 1725      | PPC Pebble Grey (RAL 7032) |                 |          | Rw28dB         |
| 05                       | 10          | Level 02 | 750         | 2485     | 1725      | PPC Pebble Grey (RAL 7032) |                 |          | Rw28dB         |
| 06                       | 1           | Level 02 | 750         | 1248     | 1725      | PPC Pebble Grey (RAL 7032) |                 |          | Rw28dB         |
| 07                       | 1           | Level 02 | 750         | 1248     | 1725      | PPC Pebble Grey (RAL 7032) |                 |          | Rw28dB         |
| 09                       | 10          | Level 02 | 750         | 2485     | 1725      | PPC Pebble Grey (RAL 7032) |                 |          | Rw28dB         |
| 10                       | 1           | Level 02 | 750         | 1248     | 1725      | PPC Pebble Grey (RAL 7032) |                 |          | Rw28dB         |
| 11                       | 1           | Level 02 | 750         | 1248     | 1725      | PPC Pebble Grey (RAL 7032) |                 |          | Rw28dB         |
| 13                       | 12          | Level 02 | 0           | 1023     | 2475      | PPC Pebble Grey (RAL 7032) | PAS24           |          | Rw28dB         |
| 14                       | 13          | Level 02 | 870         | 1360     | 1650      | PPC Pebble Grey (RAL 7032) | PAS24           |          | Rw28dB         |
| 15                       | 16          | Level 02 | 0           | 1360     | 2400      | PPC Pebble Grey (RAL 7032) |                 |          | Rw28dB         |

| External Window Schedule |             |          |             |          |           |                            |                 |          |                |
|--------------------------|-------------|----------|-------------|----------|-----------|----------------------------|-----------------|----------|----------------|
| Window No.               | Window Type | Level    | Sill Height | SO Width | SO Height | Frame Material             | Security Rating | Comments | AcousticRating |
| 17                       | 10          | Level 02 | 750         | 2485     | 1725      | PPC Pebble Grey (RAL 7032) |                 |          | Rw28dB         |
| 18                       | 11          | Level 02 | -300        | 1023     | 1500      | PPC Pebble Grey (RAL 7032) | PAS24           |          | Rw28dB         |
| <b>Level 03</b>          |             |          |             |          |           |                            |                 |          |                |
| 01                       | 1           | Level 03 | 750         | 1248     | 1725      | PPC Pebble Grey (RAL 7032) |                 |          | Rw28dB         |
| 02                       | 1           | Level 03 | 750         | 1248     | 1725      | PPC Pebble Grey (RAL 7032) |                 |          | Rw28dB         |
| 03                       | 10          | Level 03 | 750         | 2485     | 1725      | PPC Pebble Grey (RAL 7032) |                 |          | Rw28dB         |
| 04                       | 1           | Level 03 | 750         | 1248     | 1725      | PPC Pebble Grey (RAL 7032) |                 |          | Rw28dB         |
| 05                       | 1           | Level 03 | 750         | 1248     | 1725      | PPC Pebble Grey (RAL 7032) |                 |          | Rw28dB         |
| 06                       | 1           | Level 03 | 750         | 1248     | 1725      | PPC Pebble Grey (RAL 7032) |                 |          | Rw28dB         |
| 07                       | 1           | Level 03 | 750         | 1248     | 1725      | PPC Pebble Grey (RAL 7032) |                 |          | Rw28dB         |
| 08                       | 1           | Level 03 | 750         | 1248     | 1725      | PPC Pebble Grey (RAL 7032) |                 |          | Rw28dB         |
| 09                       | 1           | Level 03 | 750         | 1248     | 1725      | PPC Pebble Grey (RAL 7032) |                 |          | Rw28dB         |
| 10                       | 1           | Level 03 | 750         | 1248     | 1725      | PPC Pebble Grey (RAL 7032) |                 |          | Rw28dB         |
| 11                       | 1           | Level 03 | 750         | 1248     | 1725      | PPC Pebble Grey (RAL 7032) |                 |          | Rw28dB         |
| 12                       | 1           | Level 03 | 750         | 1248     | 1725      | PPC Pebble Grey (RAL 7032) |                 |          | Rw28dB         |
| 13                       | 1           | Level 03 | 750         | 1248     | 1725      | PPC Pebble Grey (RAL 7032) |                 |          | Rw28dB         |
| 14                       | 11          | Level 03 | -300        | 1023     | 1500      | PPC Pebble Grey (RAL 7032) | PAS24           |          | Rw28dB         |
| 15                       | 11          | Level 03 | 2800        | 1023     | 1500      | PPC Pebble Grey (RAL 7032) | PAS24           |          | Rw28dB         |
| 16                       | 16          | Level 03 | 0           | 1360     | 2400      | PPC Pebble Grey (RAL 7032) |                 |          | Rw28dB         |
| 17                       | 13          | Level 03 | 825         | 1360     | 1650      | PPC Pebble Grey (RAL 7032) | PAS24           |          | Rw28dB         |
| <b>Level 04</b>          |             |          |             |          |           |                            |                 |          |                |
| 01                       | 4           | Level 04 | 1125        | 2485     | 1350      | PPC Pebble Grey (RAL 7032) | PAS24           |          | Rw28dB         |
| 02                       | 2           | Level 04 | 1125        | 1923     | 1350      | PPC Pebble Grey (RAL 7032) | PAS24           |          | Rw28dB         |
| 03                       | 3           | Level 04 | 1125        | 2035     | 1350      | PPC Pebble Grey (RAL 7032) | PAS24           |          | Rw28dB         |
| 04                       | 5           | Level 04 | 1125        | 2148     | 1350      | PPC Pebble Grey (RAL 7032) | PAS24           |          | Rw28dB         |
| 05                       | 5           | Level 04 | 1125        | 2148     | 1350      | PPC Pebble Grey (RAL 7032) | PAS24           |          | Rw28dB         |
| 06                       | 4           | Level 04 | 1125        | 2485     | 1350      | PPC Pebble Grey (RAL 7032) | PAS24           |          | Rw28dB         |
| 07                       | 13          | Level 04 | 775         | 1360     | 1650      | PPC Pebble Grey (RAL 7032) | PAS24           |          | Rw28dB         |

|   |          |                                  |    |    |
|---|----------|----------------------------------|----|----|
| D | 20.04.16 | Window & door references amended | LS | JR |
| C | 08.04.16 | Acoustic rating added to windows | LS | JR |
| B | 22.02.16 | Window openings amended          | LS | JR |
| A | 16.02.16 | First Issue                      | LS | JR |

Rev:    Date:    Description:    Chk:    Apr:

Scale @ A1: As indicated    Issuing Office: London    Project No: 84923

Status: S4    Purpose of Issue: Construction

**Ingleton Wood**  
Vision, form and function

London  
1 Alle Street  
London E1 8DE

Billericay  
Cambridge  
Colchester  
London  
Norwich

T: 020 7680 4400  
www.ingletonwood.co.uk

Project:  
Regents Park Estate  
Plot 1 - Robert Street Car Park  
London  
NW1 3JS

Drawing Title:  
External Window Schedule

Client:  
Lovell Partnership Ltd.