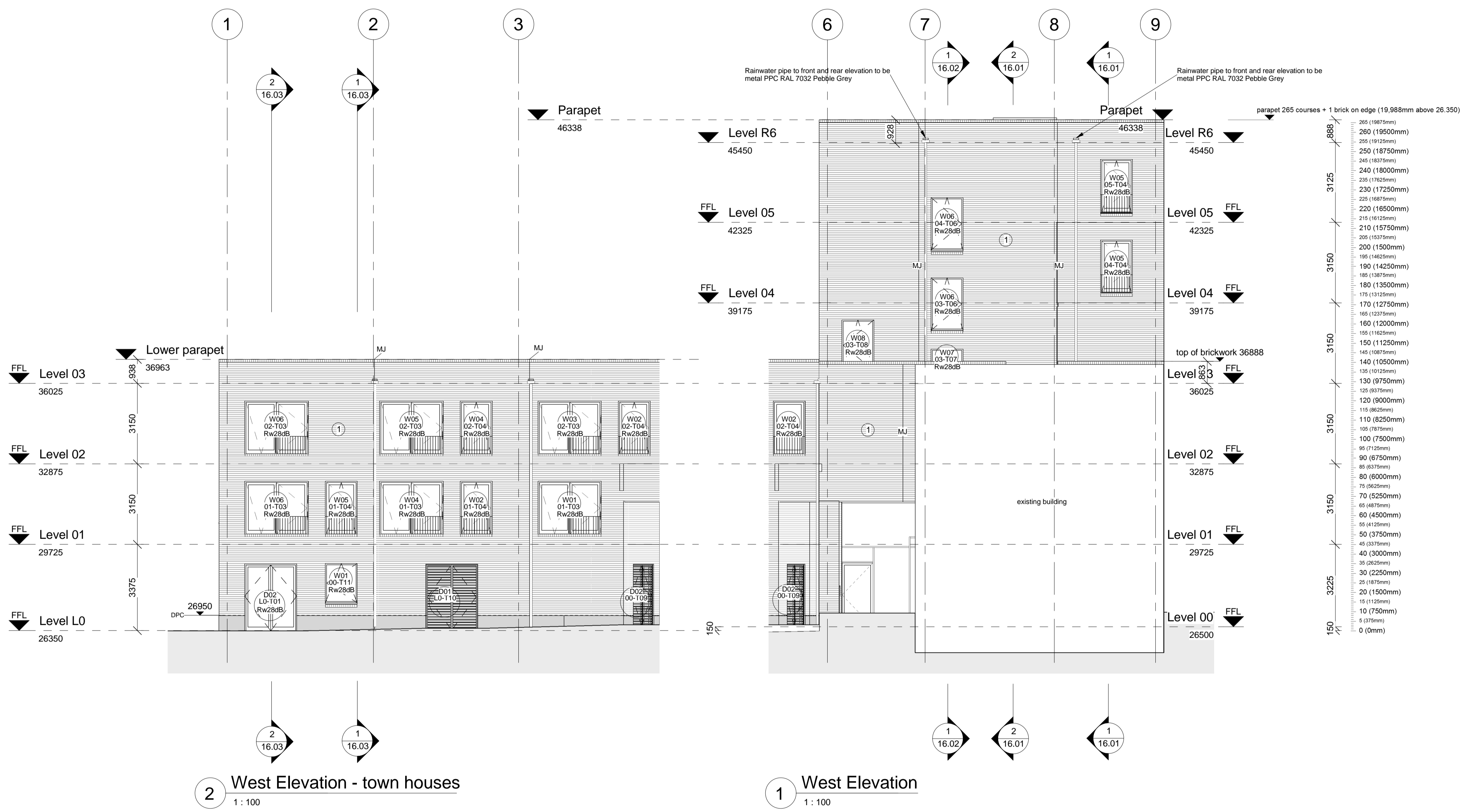
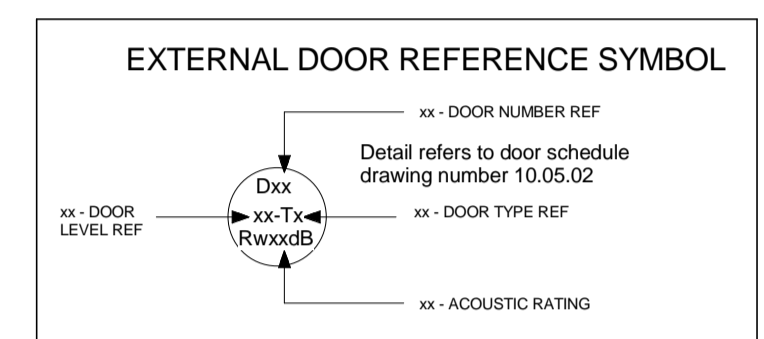
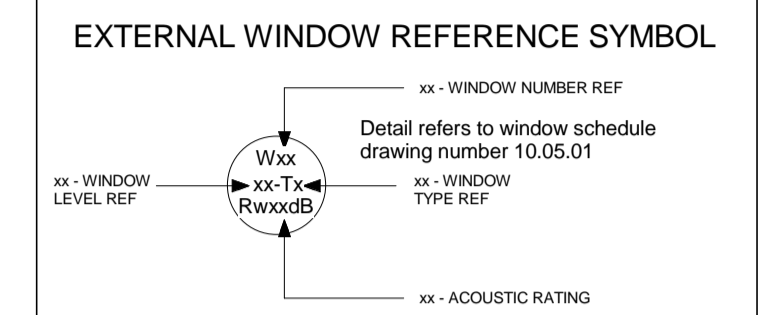
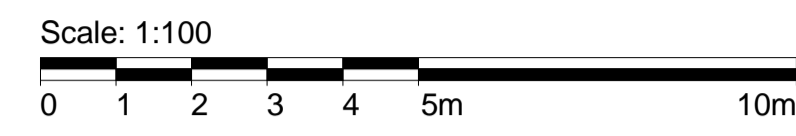


Material Schedule	
Reference	Description
1	'Mystique' brick, by Traditional Brick and stone. - A Light buff, heavily textured brick, with a large variation of colours, white, buff, and oak colour. Each brick to also have a variation of colour - stretcher bond
2	Pre-cast 102.5mm thick wetcast lining, with pre-cast signage to domestic and communal doorways, to match GRC
3	GKD PC Tigris Stainless steel Mesh or similar within steel frame, steel frame should match balustrade colour. Punched Metal signage built into gate frame. Helvetica Neue Typeface

All dimensions to be verified on site by Main Contractor before the start of any shop drawings or work whatsoever either on their own behalf or that of sub-contractors.  
 Report any discrepancies to the Contract Administrator at once.  
 This drawing is to be read with all relevant Architect's and Engineer's drawings and other relevant information.  
 © Ingleton Wood LLP

LEGEND: DO NOT SCALE



G	22.04.16	General amendments & movement joints added	RB	JR
F	20.04.16	Door & window references updated	LS	JR
E	08.04.16	Acoustic rating added to windows	LS	JR
D	23.02.16	Window/door references added	LS	JR
C	05.02.16	Rainwater pipes moved from exterior to interior as per Neil Davies instruction. Datums and masonry amended. Material tags added.	RB	JR
B	14.12.15	Issued for review	JR	JR
A	28.08.15	First Issue.	JR	JR
Rev:	Date:	Description:	Chk:	App:

Scale @ A1:	Issuing Office:	Project No:
1: 100	London	84923
Status:	Purpose of Issue:	
S4	Construction	

**Ingleton Wood**  
 Vision, form and function

**Billericay**  
**Cambridge**  
**Colchester**  
**London**  
**Norwich**

London  
 1 Alie Street  
 London E1 8DE  
 T: 020 7680 4400  
 www.ingletonwood.co.uk

Project:  
 Regents Park Estate  
 Plot 3 - Vardell Street  
 London  
 NW1 3RG

Drawing Title:  
 External Elevation - West

Client:  
 Lovell Partnership Ltd.