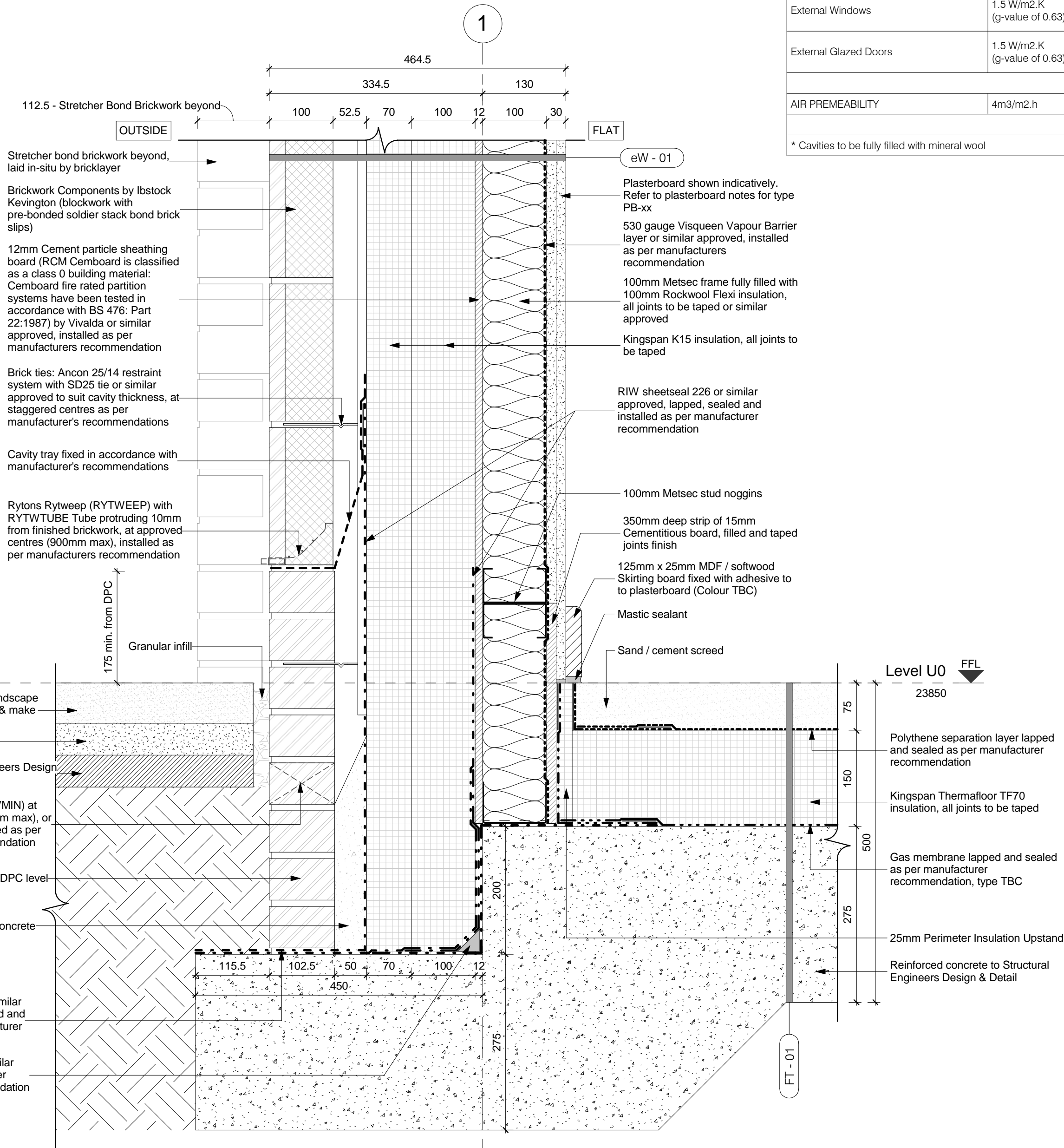


1 Section of Ground Floor Detail (Soldier-Course Stack Bond) @ Commercial  
1 : 5



2 Section of Ground Floor Detail (Soldier-Course Stack Bond) @ Flat  
1 : 5

Masonry Wall Tie Spacing

	Horizontal Spacing	Vertical Spacing
Distance along wall	Max. 900mm	Max. 450mm
Distance from Openings, Roof Verges, Movement Joints	Max. 225mm	Max. 300mm

Note: Wall ties along wall may correspond to table above or alternatively be spaced such as not to be less than 2.5 ties/m<sup>2</sup>. Wall ties to be installed to manufacturer instructions

ALL JUNCTIONS BETWEEN INTERNAL CEILING & INTERNAL WALLS AND PENETRATIONS IN AIR BARRIER TO BE SEALED WITH FLEXIBLE SEALANT.

ALL PLASTERBOARD JOINT LOCATIONS TO BE TAPED AND JOINT FINISH.

ALL PLASTERBOARD ON DABS TO HAVE CONTINUOUS RIBBON OF ADHESIVE AROUND ALL OPENINGS, ALONG TOP AND BOTTOM OF WALL, AND AT INTERNAL AND EXTERNAL CORNERS.

DETAILS TO BE READ IN CONJUNCTION WITH SECTIONS & GA PLANS - REFER TO SUITABLE PLASTERBOARD TYPE.

NOTE  
Wall tie setouts shown indicatively. Set outs & distances between ties to be installed as per manufacturer instructions

PROPOSED U-VALUE TO ACHIEVE

Ground Floor	0.11 W/m <sup>2</sup> .K
External Wall - Brickwork with Mestic	0.10 W/m <sup>2</sup> .K
External Wall - Brickwork with Blockwork	0.11 W/m <sup>2</sup> .K
Separating Walls: Flat / Communal Areas	TBC
Separating Walls: Flat / Lift Shaft	TBC
Separating Walls: Flat / Flat Party Walls	0.0*
Roof	0.11 W/m <sup>2</sup> .K
External Opaque Doors	1.0 W/m <sup>2</sup> .K
External Windows	1.5 W/m <sup>2</sup> .K (g-value of 0.63)
External Glazed Doors	1.5 W/m <sup>2</sup> .K (g-value of 0.63)
AIR PERMEABILITY	4m <sup>3</sup> /m <sup>2</sup> .h

\* Cavities to be fully filled with mineral wool

All dimensions to be verified on site by Main Contractor before the start of any shop drawings or work whatsoever either on their own behalf or that of sub-contractors.

Report any discrepancies to the Contract Administrator at once.

This drawing is to be read with all relevant Architect's and Engineer's drawings and other relevant information.

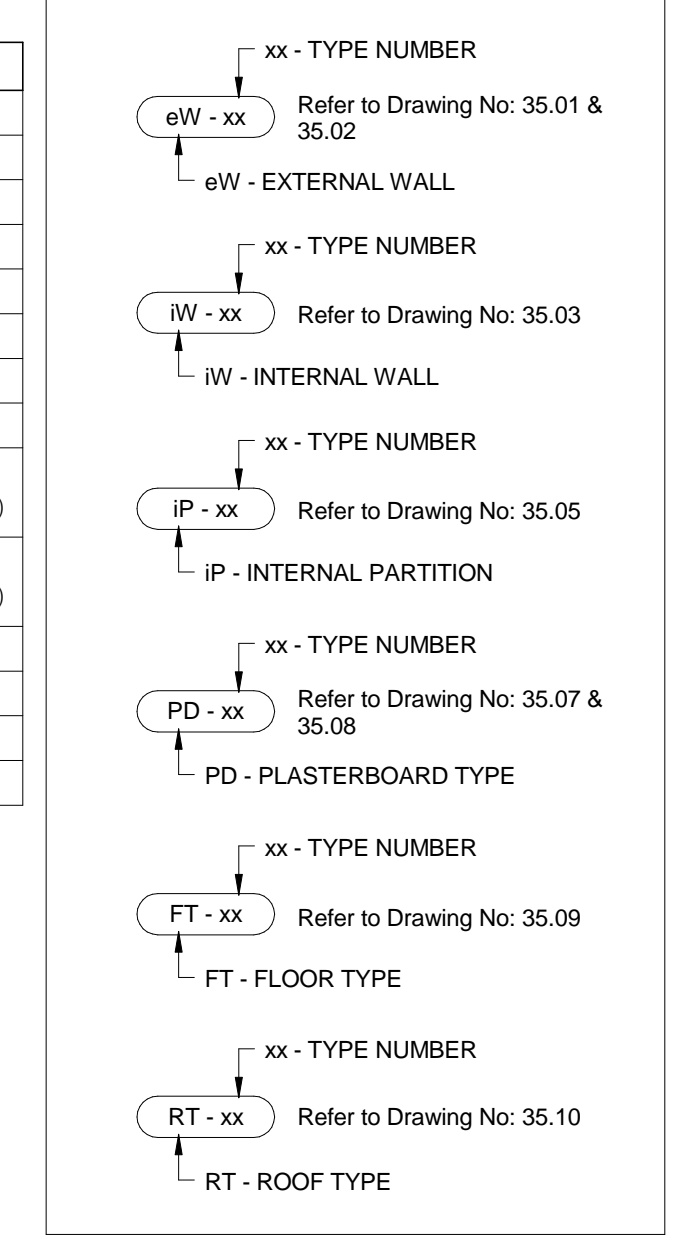
© Ingleton Wood LLP

LEGEND: DO NOT SCALE

GENERAL NOTES  
This drawing should be read in conjunction with all relevant consultants drawings and specifications.

Setting out dimensions and sizing of all RC elements should be taken from structural engineer's drawings and documentation.

EXTERNAL & INTERNAL WALL SYMBOLS



Rev	Date	Description	Chk	Apr
C	13.05.16	OPM changed to gas membrane	KP	JR
B	22.01.16	Construction Issue	KP	JR
A	24.03.16	First Issue	KP	JR

Scale @ A1: 1 : 5  
Issuing Office: London  
Project No: 84923

Status: S4  
Purpose of Issue: Construction

**Ingleton Wood**  
Vision, form and function

London  
1 Alie Street  
London E1 8DE

Billericoy  
Cambridge  
Colchester  
London  
Norwich

T: 020 7680 4400  
www.ingletonwood.co.uk

Project:  
Regents Park Estate  
Plot 4 - Newlands  
Hampstead Road  
London NW1 2PS

Drawing Title:  
Ground Floor Details - Sheet 01

Client:  
Lovell Partnership Ltd.

File Ref:  
NL - IW - XX - ZZ - DR - A - 35.11

Revision:  
C