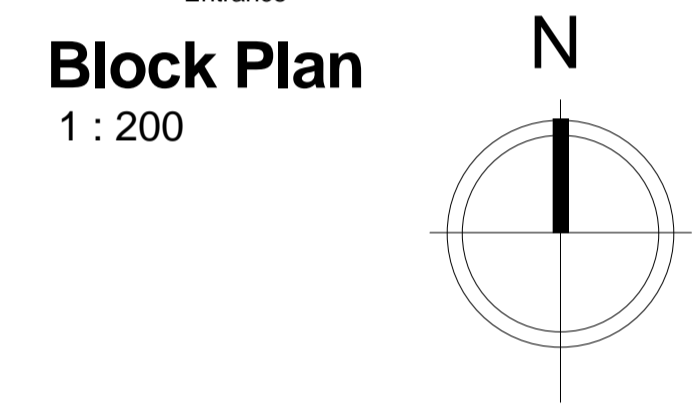
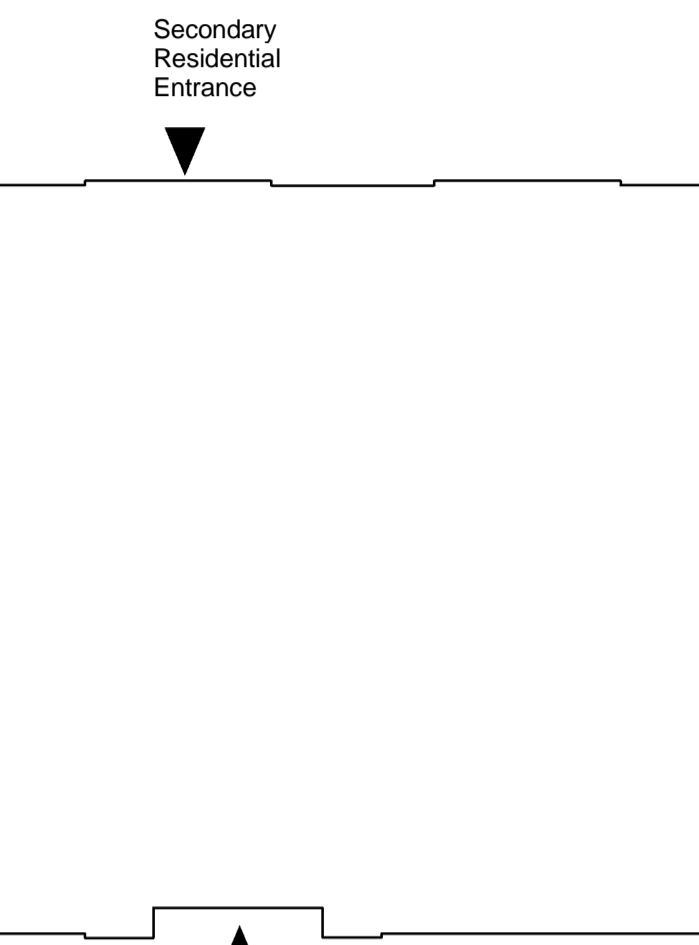
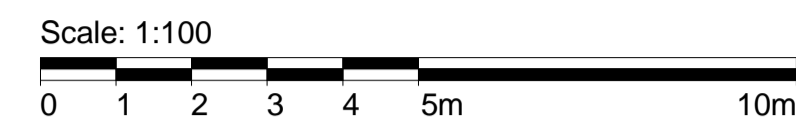


All dimensions to be verified on site by Main Contractor before the start of any shop drawings or work whatsoever either on their own behalf or that of sub-contractors.
 Report any discrepancies to the Contract Administrator at once.
 This drawing is to be read with all relevant Architect's and Engineer's drawings and other relevant information.
 © Ingleton Wood LLP

LEGEND: DO NOT SCALE



Reference	Description
1	Soft yellow stock, sand faced facing brickwork with variation of colours, white, buff and yellow, stretcher bond.
2	Soft yellow stock, sand faced facing brickwork with variation of colours, white, buff and yellow, stacked soldier bond.

Rev	Date	Description	Chk	App
H	30.04.16	Window & door references updated	LS	JR
G	08.04.16	Acoustic rating added to windows	LS	JR
F	16.02.16	Window references amended	LS	JR
E	20.01.16	Amended to suit client comments	LS	JR
D	08.12.15	Issued for review	LS	JR
C	30.11.15	Amended to suit client comments	LS	JR
B	24.11.15	Issued for comment	LS	JR
A	30.10.15	Details and notes added	LS	JR

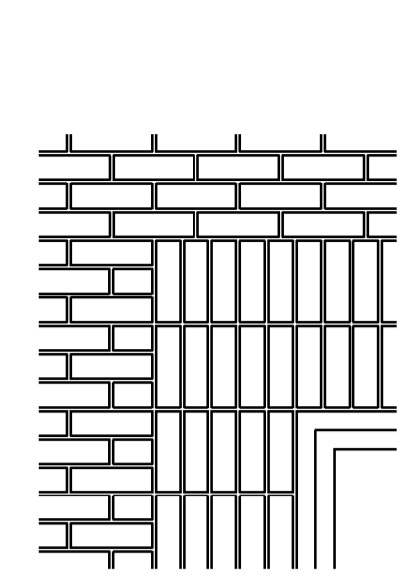
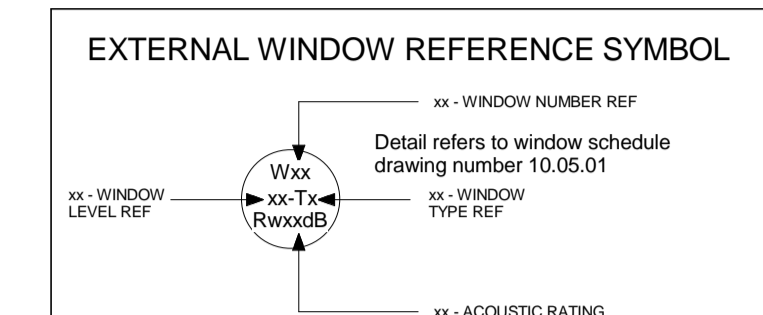
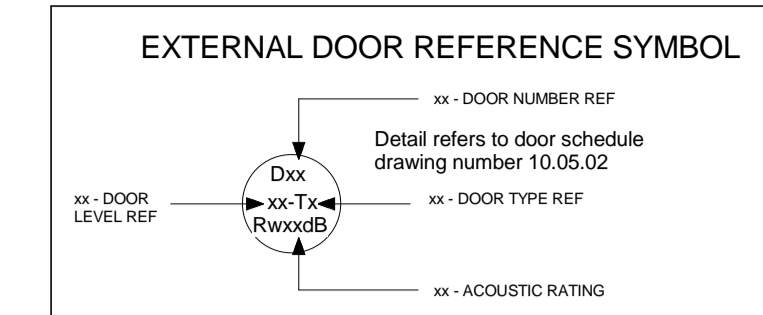
Scale @ A1: As indicated
 Issuing Office: London
 Project No: 84923
 Status: S4
 Purpose of Issue: Construction

Ingleton Wood
 Vision, form and function
 London
 1 Alle Street
 Colchester
 London
 Norwich
 T: 020 7680 4400
 www.ingletonwood.co.uk

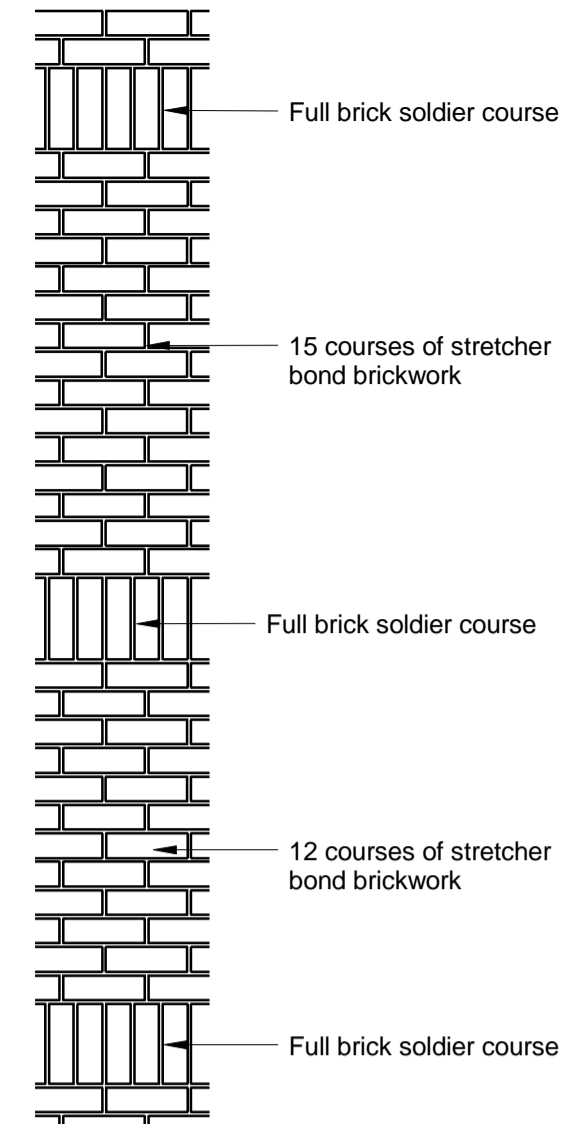
Project:
 Regents Park Estate
 Plot 4 - Newlands
 Hampstead Road
 London NW1 2PS

Drawing Title:
 External Elevations - South & West
 Client:
 Lovell Partnership Ltd.

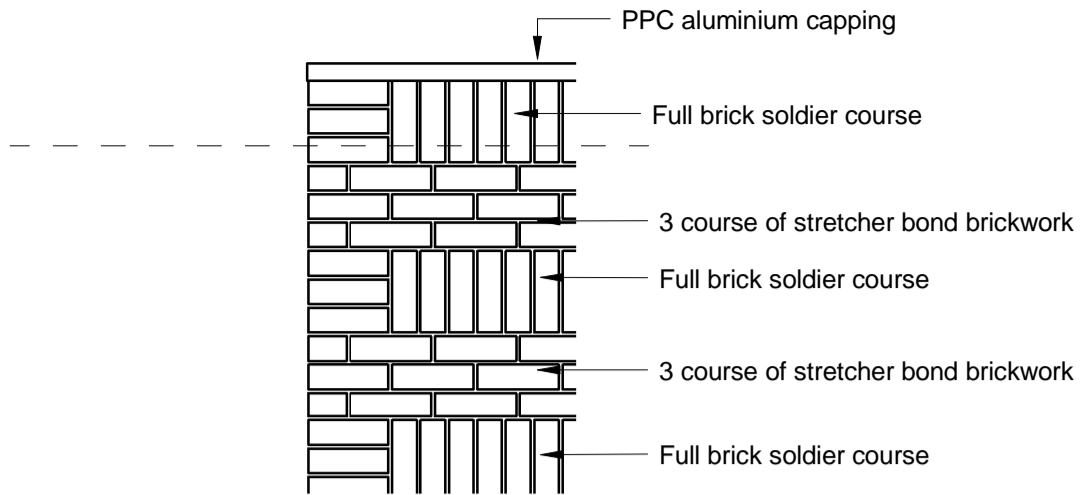
File Ref: NL - IW - XX - ZZ - DR - A - 17.02
 Revision: H



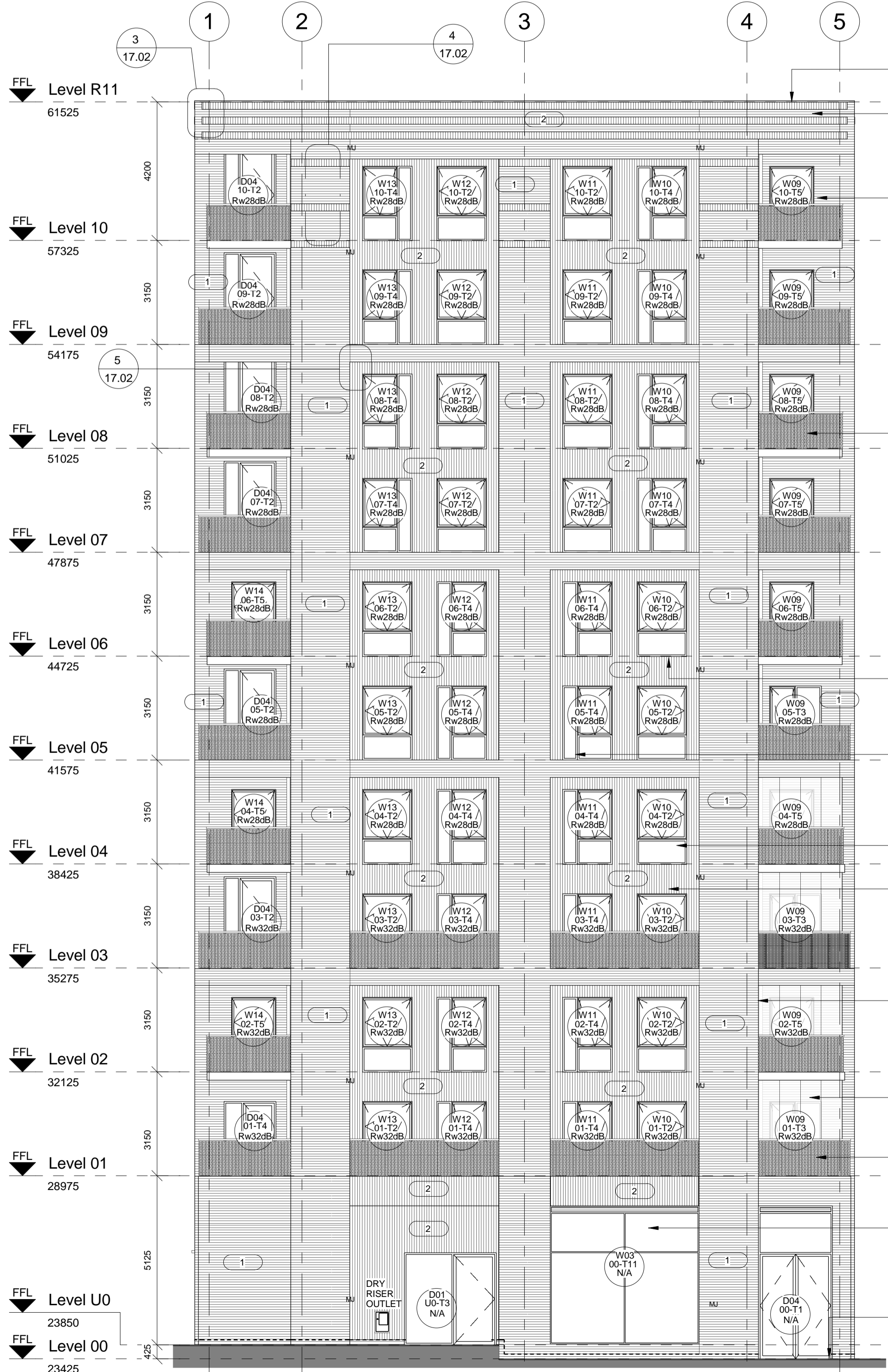
5 Typical Brick Recessed Detail
 1:20



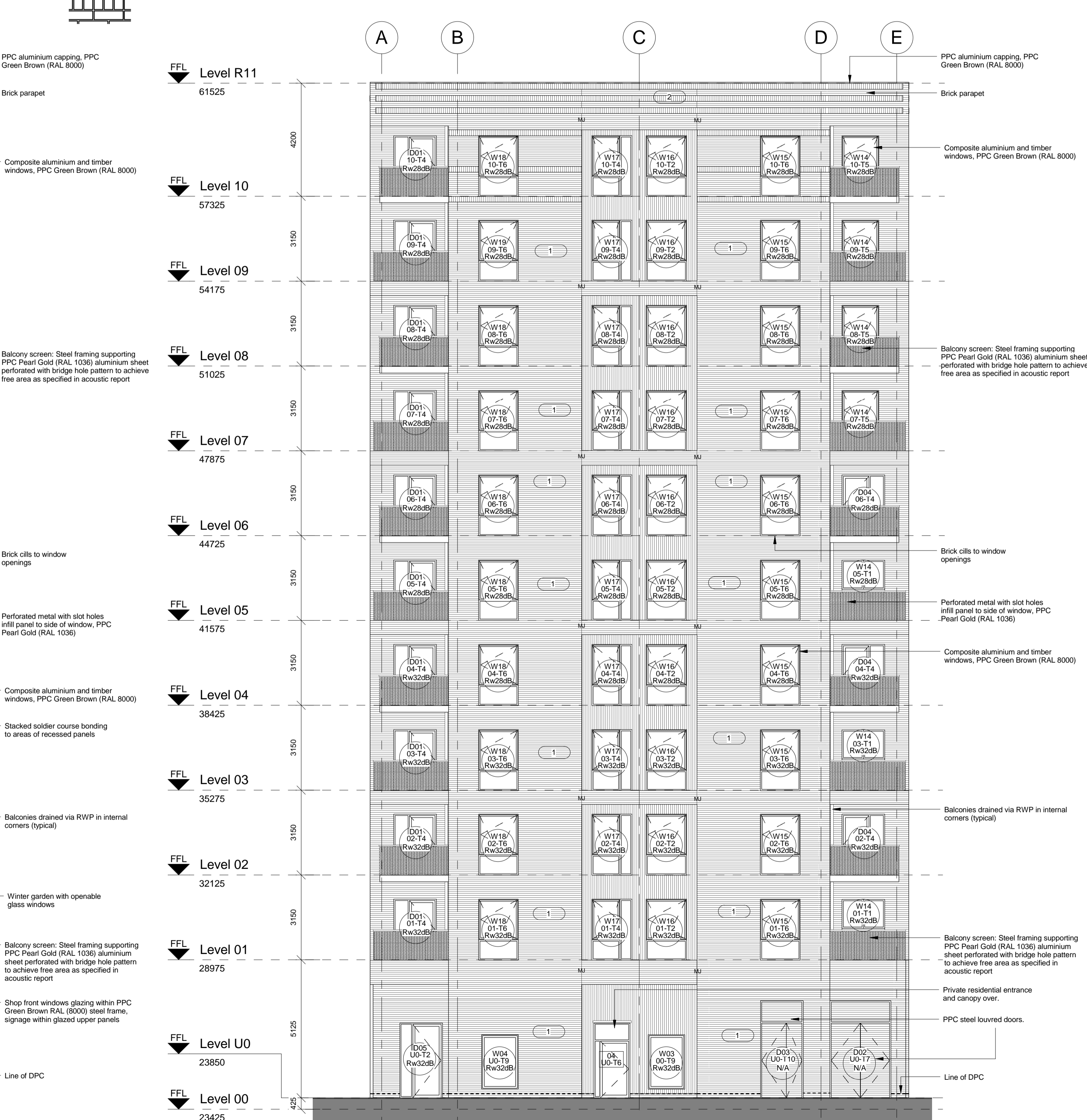
4 Typical Brick Banding Detail
 1:20



3 Typical Brick Banding Parapet Detail
 1:20



1 External South Elevation
 1:100



2 External West Elevation
 1:100

PPC aluminium capping, PPC Green Brown (RAL 8000)
 Brick parapet
 Composite aluminium and timber windows, PPC Green Brown (RAL 8000)
 Balcony screen: Steel framing supporting PPC Pearl Gold (RAL 1036) aluminium sheet perforated with bridge hole pattern to achieve free area as specified in acoustic report
 Brick clits to window openings
 Perforated metal with slot holes infill panel to side of window, PPC Pearl Gold (RAL 1036)
 Composite aluminium and timber windows, PPC Green Brown (RAL 8000)
 Stacked soldier course bonding to areas of recessed panels
 Balconies drained via RWP in internal corners (typical)
 Winter garden with openable glass windows
 Balcony screen: Steel framing supporting PPC Pearl Gold (RAL 1036) aluminium sheet perforated with bridge hole pattern to achieve free area as specified in acoustic report
 Shop front windows glazing within PPC Green Brown RAL (8000) steel frame, signage within glazed upper panels
 Line of DPC
 Private residential entrance
 Main Residential Entrance
 Secondary Residential Entrance
 Private residential entrance
 Composite aluminium and timber windows, PPC Green Brown (RAL 8000)
 Balcony screen: Steel framing supporting PPC Pearl Gold (RAL 1036) aluminium sheet perforated with bridge hole pattern to achieve free area as specified in acoustic report
 Brick clits to window openings
 Perforated metal with slot holes infill panel to side of window, PPC Pearl Gold (RAL 1036)
 Composite aluminium and timber windows, PPC Green Brown (RAL 8000)
 Brick clits to window openings
 Balconies drained via RWP in internal corners (typical)
 Balcony screen: Steel framing supporting PPC Pearl Gold (RAL 1036) aluminium sheet perforated with bridge hole pattern to achieve free area as specified in acoustic report
 Private residential entrance and canopy over.
 PPC steel louvred doors.
 Line of DPC