

Typical window frames - all buildings

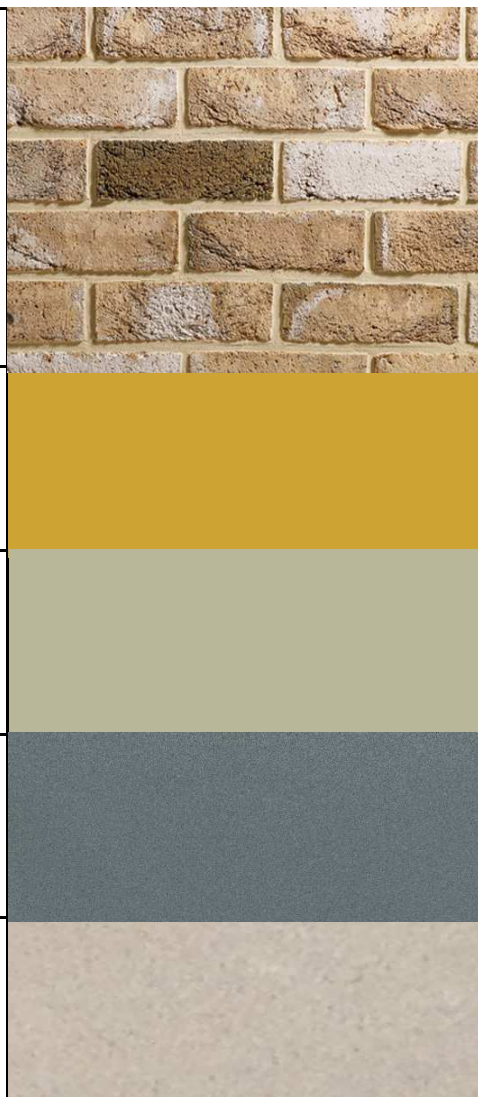
<p>Futura+ aluminium slimline window frame by Ideal Combi (inward opening)</p>
<p>Futura aluminium / timber slimline window frame by Ideal Combi (outward opening)</p>



01 ROBS

Bricks

<p>MYSTIQUE</p>
<p>Aluminium door leaf frame & top of balustrade</p> <p>RAL 1004</p>
<p>Aluminium window frame / MVHR grilles</p> <p>RAL 7032</p>
<p>Balustrades</p> <p>Steel flat bar finished in MIO, Light Grey Finish as Leigh's paints R8051</p>
<p>Exposed concrete / GRC / wetcast</p> <p>Exposed concrete, GRC & wetcast all to match Colour CL001 by Keim Concretal Lasur range (Lasur to be used where inherent finish does not match).</p>



02 RWOS

Bricks

LINDFIELD YELLOW MULTI FACINGS by Freshfield lane



Aluminium window frames / coping / canopies / MVHR grilles

RAL 8000



Balustrades

Flat steel frame containing "bridge slot" perforated metal panel with free opening area as per Noise Impact Assessment. All to be PPC Pearl Gold RAL1036



Front entrance doors to individual flats

Zara joinery door in Idigbo - Teak Cypress with hardwood frame and cill by JCK Joinery



03 VARS

Bricks

MYSTIQUE



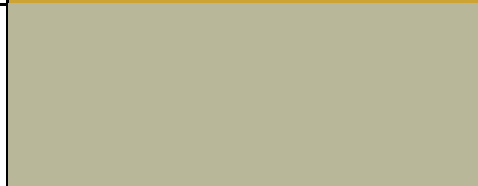
Aluminium dwelling entrance doors / balcony door frame

RAL 1004



Aluminium window frame / steel communal gate frame

RAL 7032



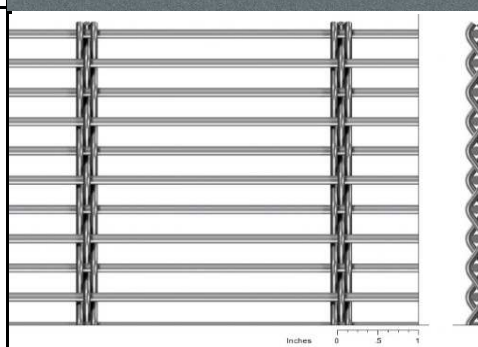
Balustrades

Steel flat bar finished in MIO, Light Grey Finish as Leigh's paints R8051



Communal gates

PC Tigris mesh in matching steel frame



Exposed concrete / GRC / wetcast

Exposed concrete, GRC & wetcast all to match Colour CL001 by Keim Concretal Lasur range (Lasur to be used where inherent finish does not match).



04 NL

Bricks

LINDFIELD YELLOW MULTI FACINGS by Freshfield lane



Aluminium window frames / coping / canopies / MVHR grilles

RAL 8000



Balustrades

Flat steel frame containing "bridge slot" perforated metal panel with free opening area as per Noise Impact Assessment. All to be PPC Pearl Gold RAL1036



Front entrance doors to individual flats

Zara joinery door in Idigbo - Teak Cypruss with hardwood frame and cill by JCK Joinery



05 DCH

Bricks

TBC

Aluminium door leaf

RAL 1019



Aluminium window frame & steel flat balustrade

RAL 8014



Exposed concrete / render

Precast reconstituted stone profiled banding and balconies as Blackhill Natural by Cornish concrete or similar. Render to match appearance of concrete



06 COGH

1st Brick

MYSTIQUE



2nd Brick

WHITE ENGOBE - 5145



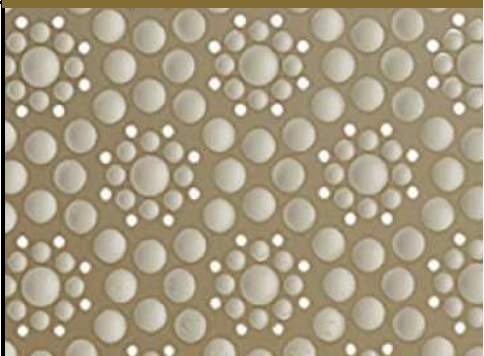
Aluminium window frames / coping / canopies / MVHR grilles

RAL 8000



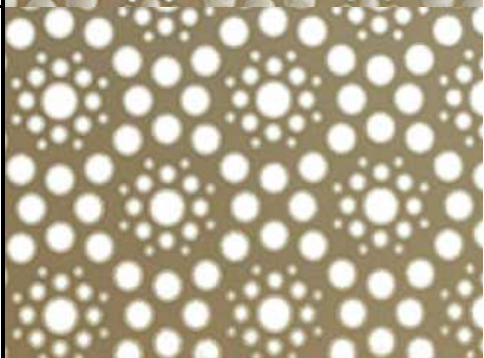
Infill for balustrades

Embossed metal plate PPC RAL 1036 to Albany St elevations, as per Noise Impact Assessment



Infill for balustrades

Punched metal plate PPC RAL 1036 to Albany St elevations, as per Noise Impact Assessment



Front entrance doors to individual flats

Zara joinery door in Idigbo - Teak Cypruss with hardwood frame and cill by JCK Joinery



08 TVP

Brick

WHITE ENGOBE - 5145



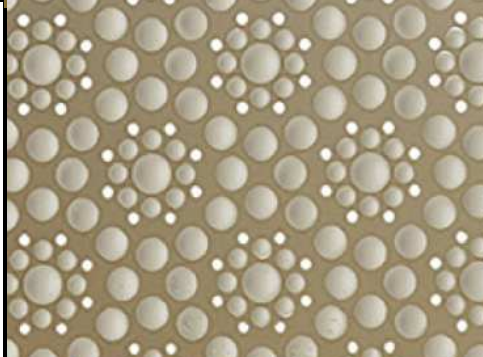
Aluminium window frames / coping / canopies / MVHR grilles

RAL 8000



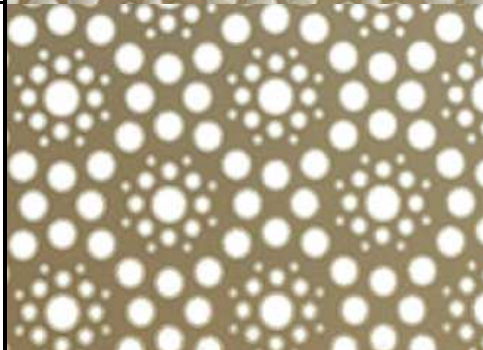
Infill for balustrades / screening to windows

Embossed metal plate PPC RAL 1036 to Albany St elevations, as per Noise Impact Assessment



Infill for balustrades

Punched metal plate PPC RAL 1036 to Albany St elevations, as per Noise Impact Assessment



Front entrance doors to individual flats

Zara joinery door in Idigbo - Teak Cypruss with hardwood frame and cill by JCK Joinery



09 SBM

1st Brick

FIRST QUALITY FACINGS by Freshfield Lane



2nd Brick

MYSTIQUE



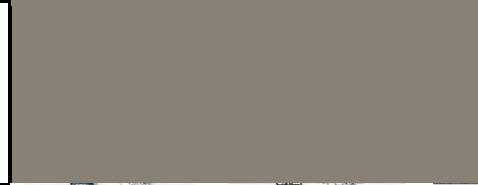
Aluminium window frames / coping / canopies

RAL 7030



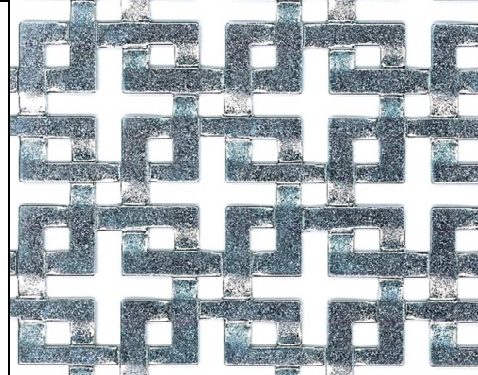
Frame for gates & balustrades

RAL 7048



Infill for gates & balustrades

Flat steel frame containing metal panel, woven metal pattern. All to be PPC RAL 7048



Front entrance doors to individual flats

Zara joinery door in Idigbo - Teak Cypruss with hardwood frame and cill by JCK Joinery

