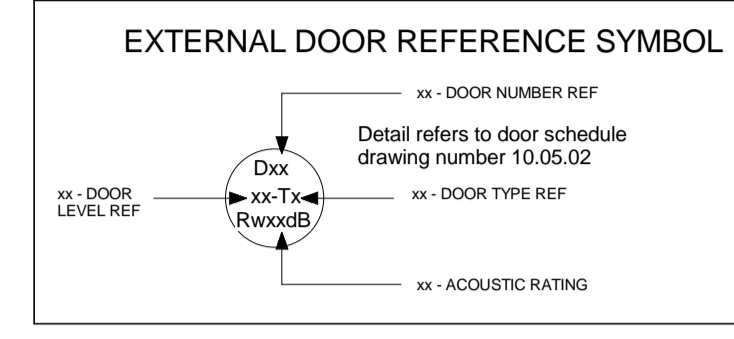
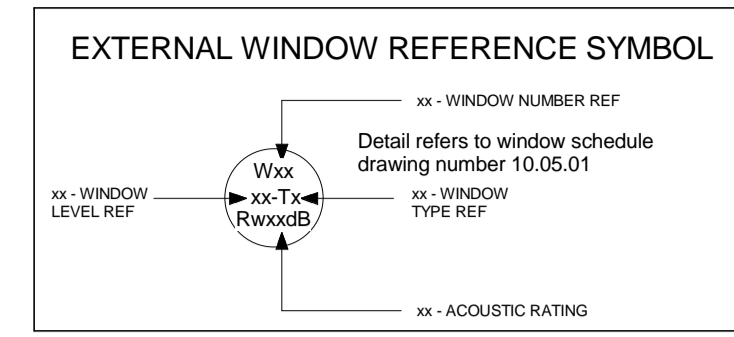
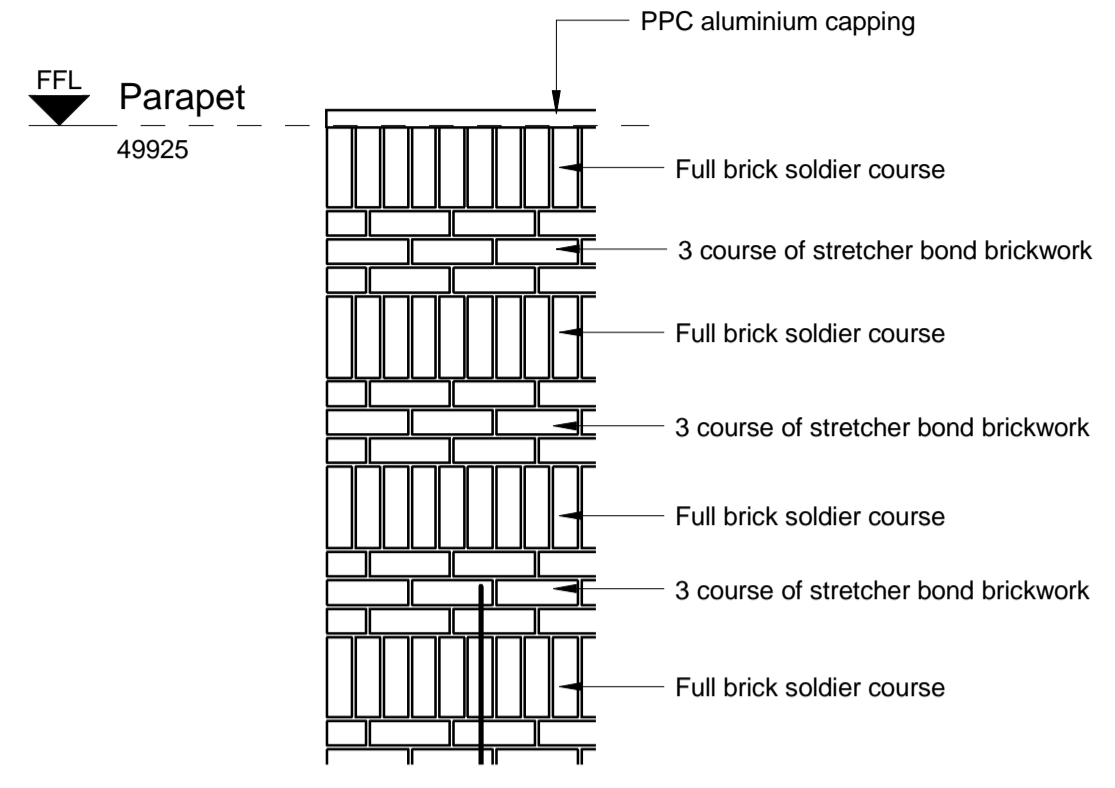
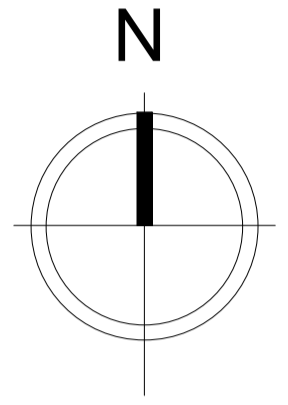
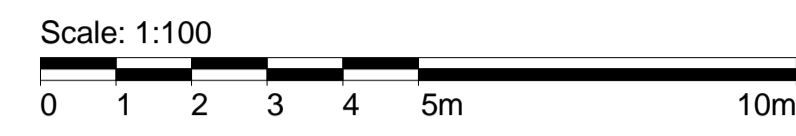


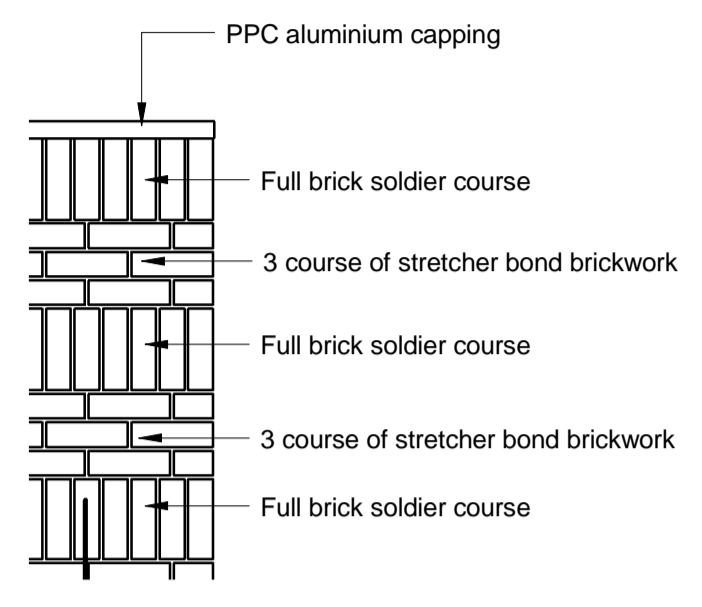
All dimensions to be verified on site by Main Contractor before the start of any shop drawings or work whatsoever either on their own behalf or that of sub-contractors.
 Report any discrepancies to the Contract Administrator at once.
 This drawing is to be read with all relevant Architect's and Engineer's drawings and other relevant information.
 © Ingleton Wood LLP



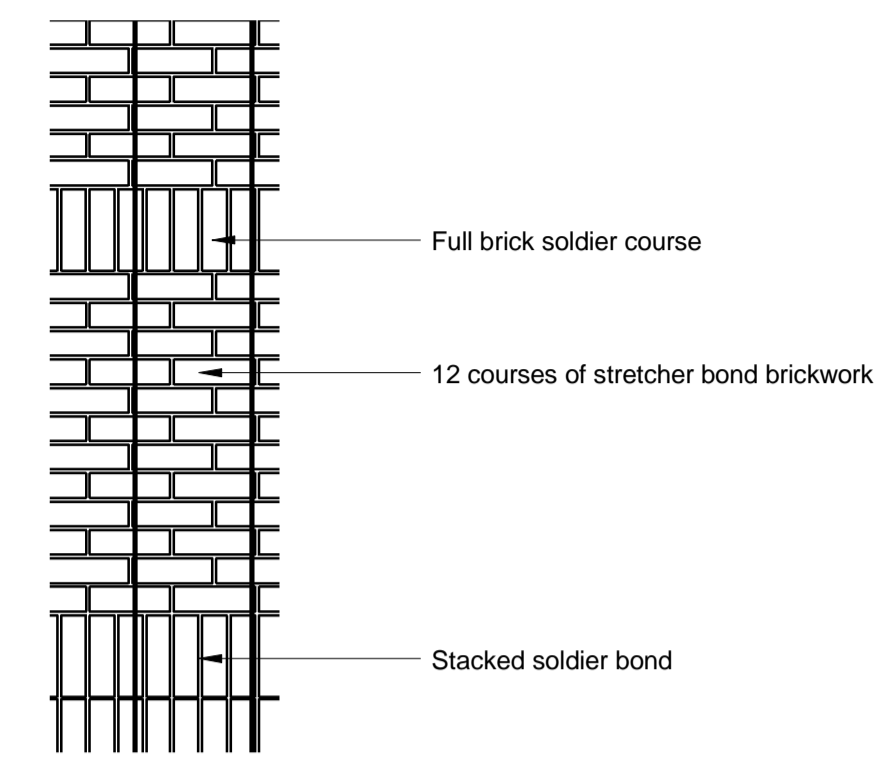
LEGEND: DO NOT SCALE



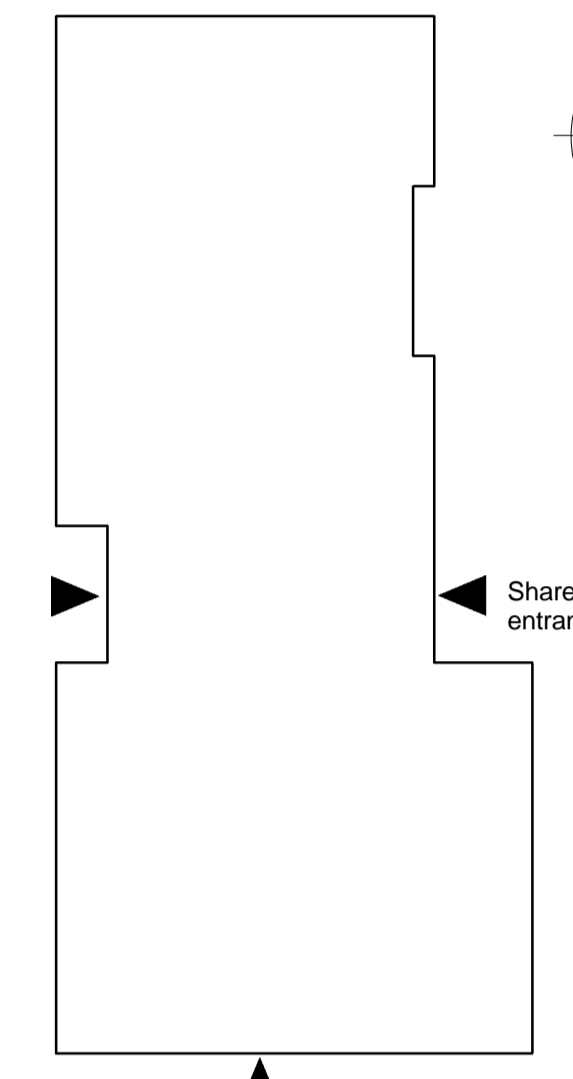
1 Typical Brick Banding Parapet Detail 1: 20



2 Typical Brick Banding Parapet Detail 2: 20



3 Feature Brick Banding Detail 1: 20



Block Plan 1: 200

Material Legend	
Reference	Description
1	Pale buff clay stock brick Traditional Brick & Stone 'Mystique' or Wierberger St Ives Cream Rustica
2	Pale buff clay stock brick, vertically stack bonded
3	Off white matt clay stock brick Istock White Engobe

Rev	Date	Description	Chk	Apr
H	22.04.16	Window & door references updated	LS	JR
G	08.04.16	Acoustic rating added to windows	LS	JR
F	24.02.16	Window types added	LS	JR
E	17.02.16	Door/Window references updated	LS	JR
D	16.02.16	Issued for information	AA	JR
C	05.02.16	Issued for information	AA	JR
B	18.12.15	Issued for review	LS	JR
A	09.11.15	Amended to show details and notes	LS	JR

Scale @ A1:	As indicated	Issuing Office:	London	Project No.:	84923
Status:	S4	Purpose of Issue:	Construction		

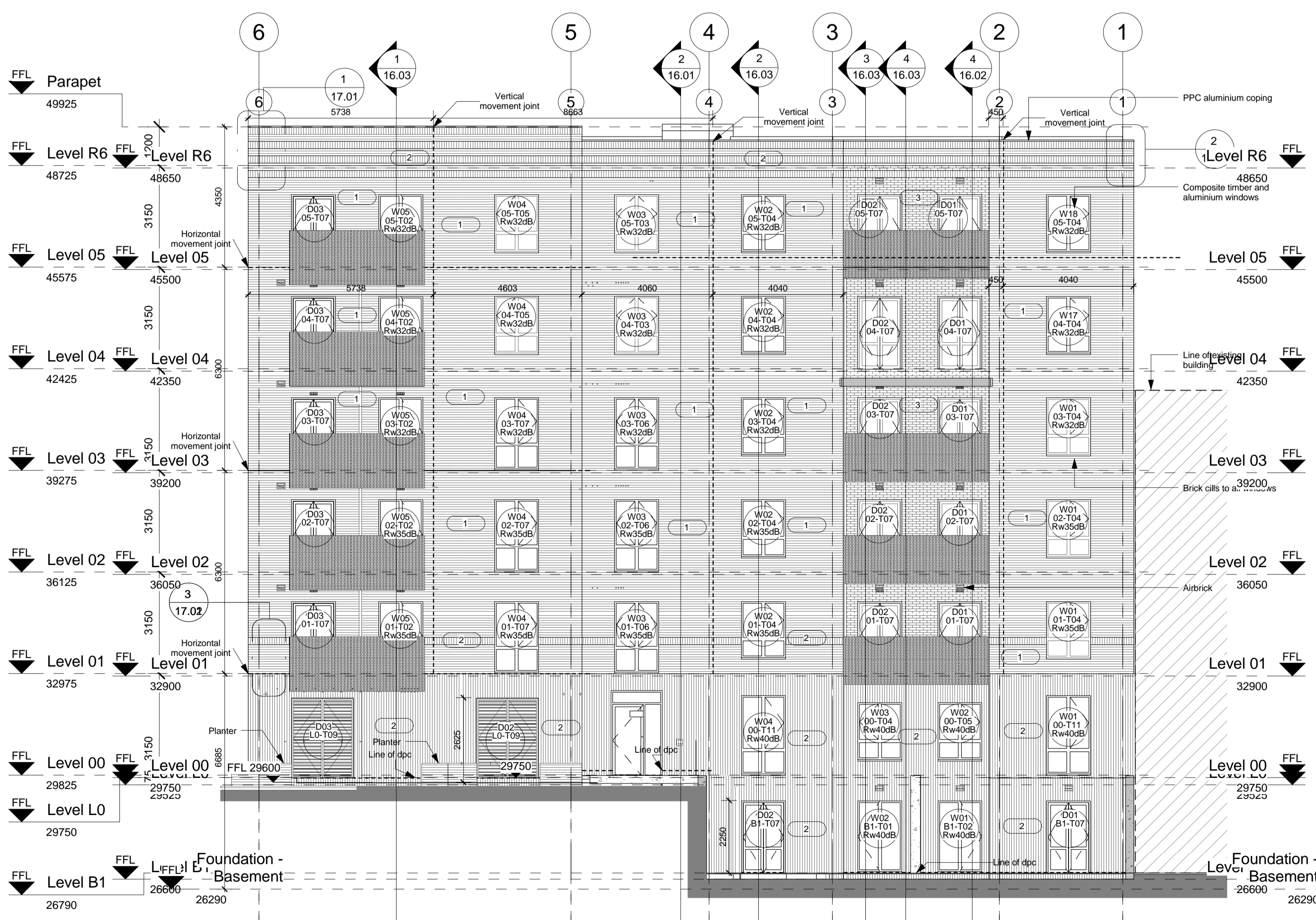
Ingleton Wood
 Vision, form and function
 London
 1 Alle Street
 London E1 8DE
 T: 020 7680 4400
 www.ingletonwood.co.uk

Client:
 Lovell Partnership Ltd.
 Project:
 Regents Park Estate
 Plot 6 - Cape Of Good Hope
 London
 NW1 4EE

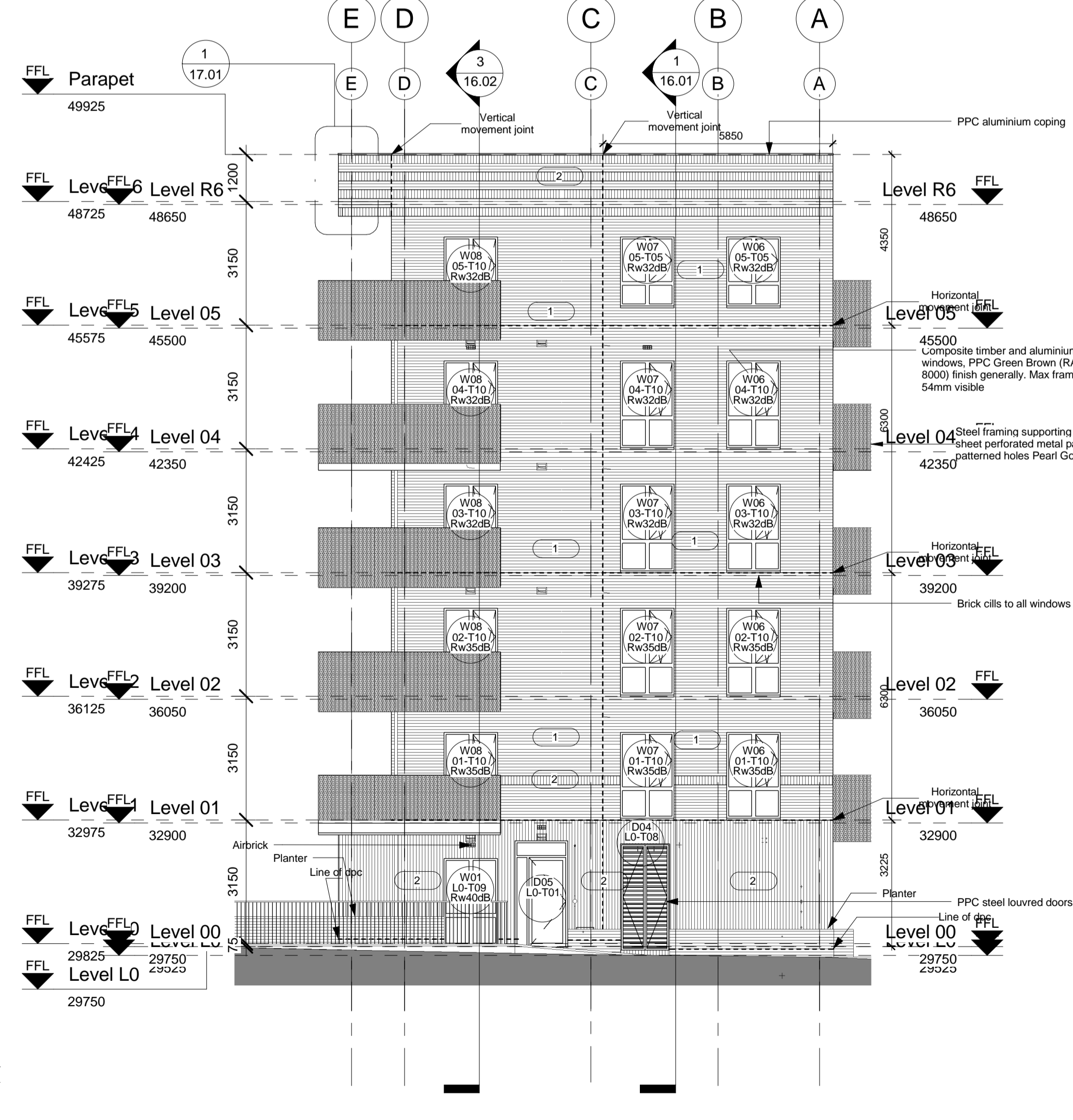
Drawing Title:
 External Elevations - East & South

File Ref:
 COGH - IW - XX - ZZ - DR - A - 17.01

Revision:
 H



4 Elevation East 1: 100



5 Elevation South 1: 100