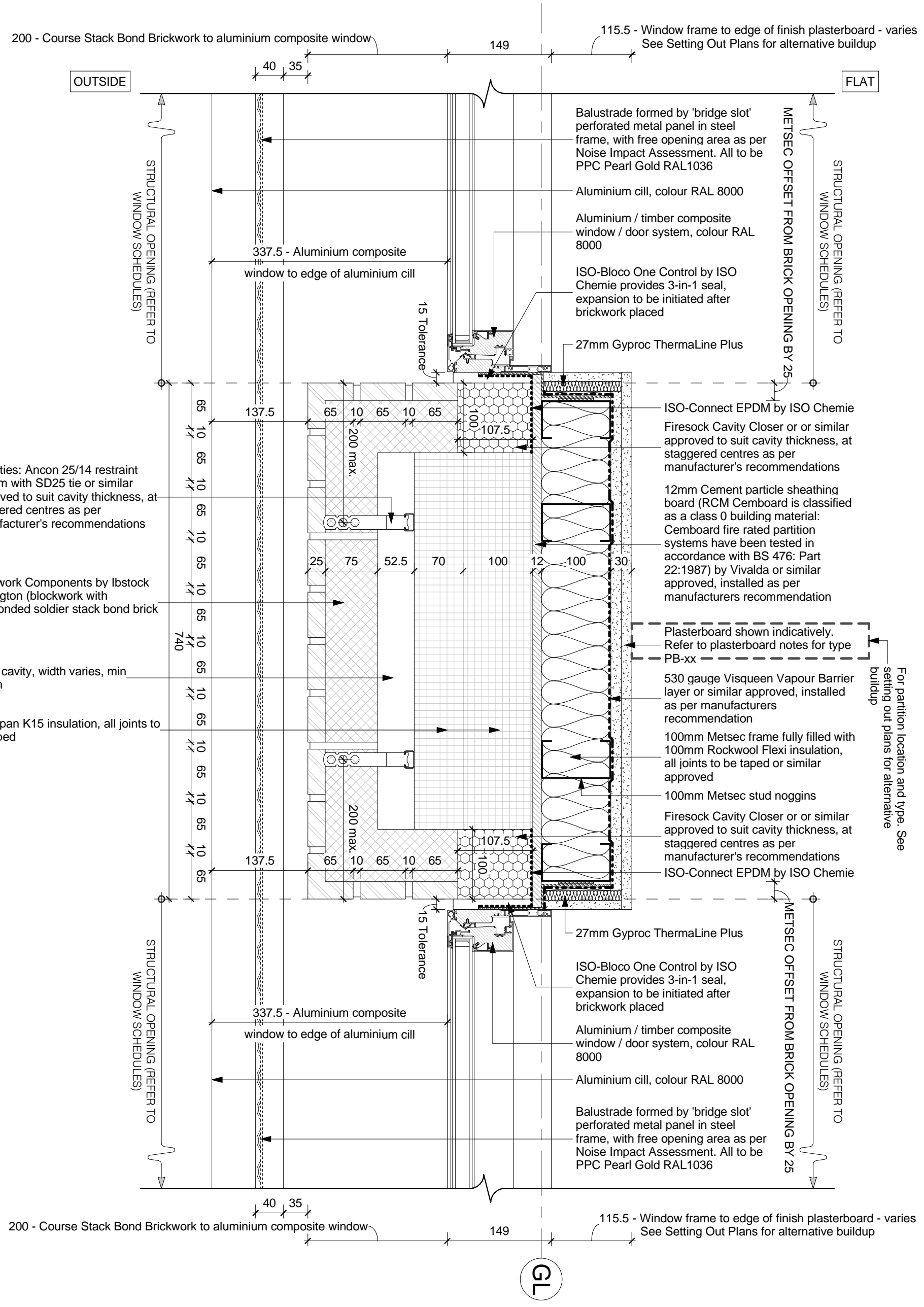
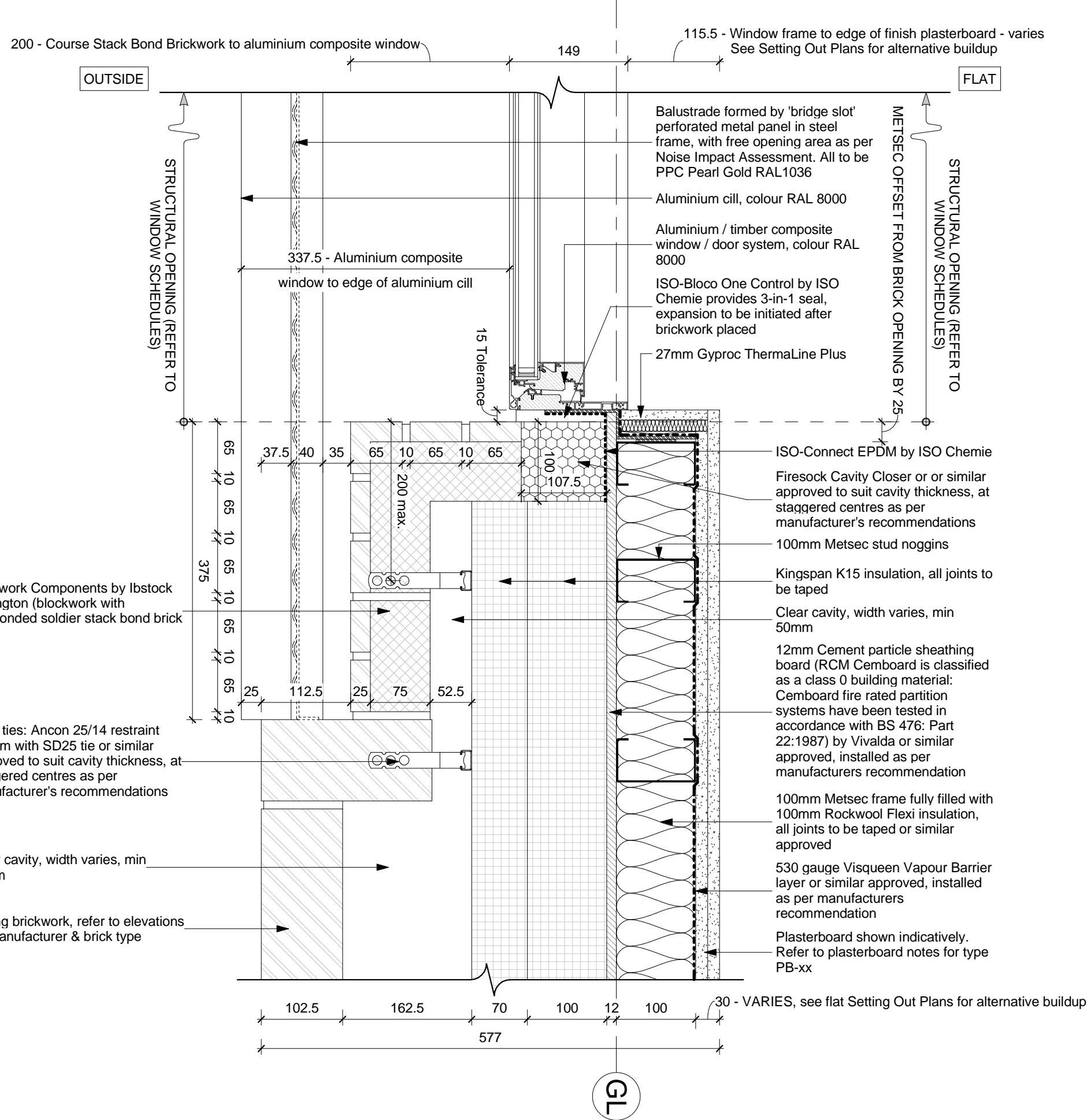


1  
1:5  
Typical Bridge Slot Juliet balcony central jamb detail (deep sill) @ East & South Elevation at 3rd Floor



2  
1:5  
Typical Bridge Slot Juliet balcony jamb detail (deep sill) @ East & South Elevation at 3rd Floor



Masonry Wall Tie Spacing

Distance along wall	Horizontal Spacing	Vertical Spacing
Distances from horizontal joints	Max. 900mm	Max. 450mm
Distances from vertical joints	Max. 225mm	Max. 300mm

Note: Wall ties along wall may correspond to table above or alternatively be spaced such as not to be less than 2.5 times. Wall ties to be installed as per manufacturer instructions.

ALL JUNCTIONS BETWEEN INTERNAL CEILING & INTERNAL WALLS AND PENETRATIONS IN AIR BARRIERS TO BE SEALED WITH LEAKABLE SEALANT. ALL PLASTERBOARD JOINT LOCATIONS TO BE TAPED AND JOINT FINISH.

ALL PLASTERBOARD ON DARS TO HAVE CONTINUOUS REBON OF ADHESIVE AROUND ALL OPENINGS, ALONG TOP AND BOTTOM OF WALL AND AT INTERNAL AND EXTERNAL CORNERS.

DETAILS TO BE READ IN CONJUNCTION WITH SECTIONS & GA PLANS - REFER TO SUITABLE PLASTERBOARD TYPE.

**NOTE**  
Wall tie secure shown indicatively. Set outs & distances between ties to be installed as per manufacturer instructions.

**LEGEND:** DO NOT SCALE

**GENERAL NOTES**  
This drawing should be read in conjunction with all relevant consultant drawings and specifications. Setting out dimensions and sizing of all RC elements should be taken from structural engineer's drawings and documentation.

**PROPOSED U-VALUE TO ACHIEVE**

Ground Floor	0.11 W/m <sup>2</sup> K
External Wall - Brickwork with Massic	0.10 W/m <sup>2</sup> K
External Wall - Brickwork with Blockwork	0.11 W/m <sup>2</sup> K
Separating Walls: Flat / Communal Areas	TBC
Separating Walls: Flat / Lift Shaft	TBC
Separating Walls: Flat / Flat Party Walls	0.0*
Floor	0.11 W/m <sup>2</sup> K
External Oblique Doors	1.3 W/m <sup>2</sup> K (g-value of 0.63)
External Windows	1.0 W/m <sup>2</sup> K
External Glazed Doors	1.5 W/m <sup>2</sup> K (g-value of 0.63)
AIR PERMEABILITY	4m <sup>3</sup> /m <sup>2</sup> h

\* Confirms to be fully filled with mineral wool

Author	A. J. S. 13/06/21	Drawn	JK
Checked	JK	Approved	JK
Scale	1:5	Project No.	84923
Sheet	S4	Construction	

**Ingleton Wood**  
Vision, form and function

1 Aile Street  
London  
London, E1 8DE  
T: 020 7480 4400  
www.ingletonwood.co.uk

Project:  
Regents Park Estate  
Plot 4 - Newlands  
Hampstead Road  
London NW1 2PS

Drawings Title:  
External Window & Door details - Sheet 04

Client:  
Lovell Partnership Ltd.

File Ref:  
NL - IW - XX - ZZ - DR - A - 35-174

Revision:  
A