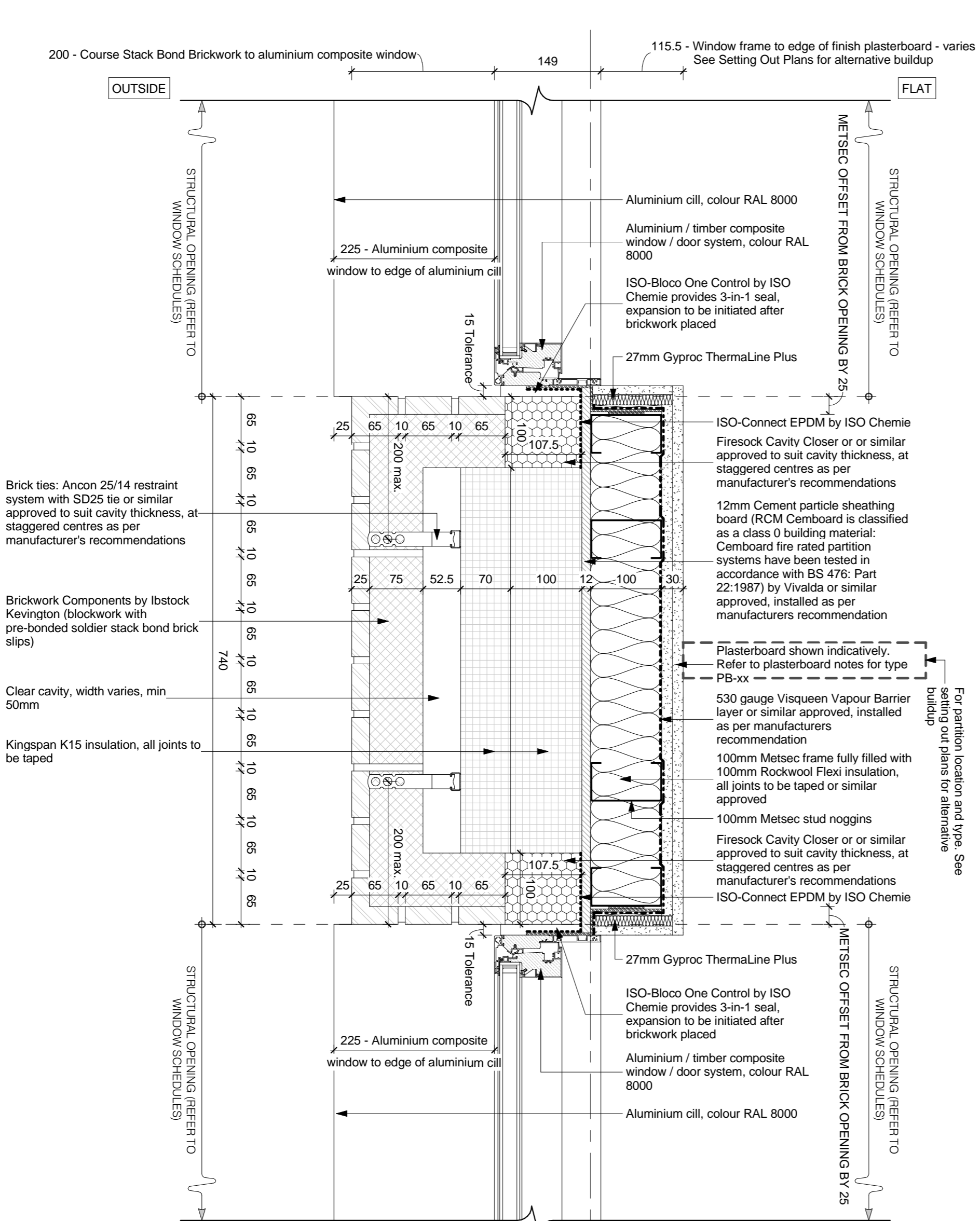
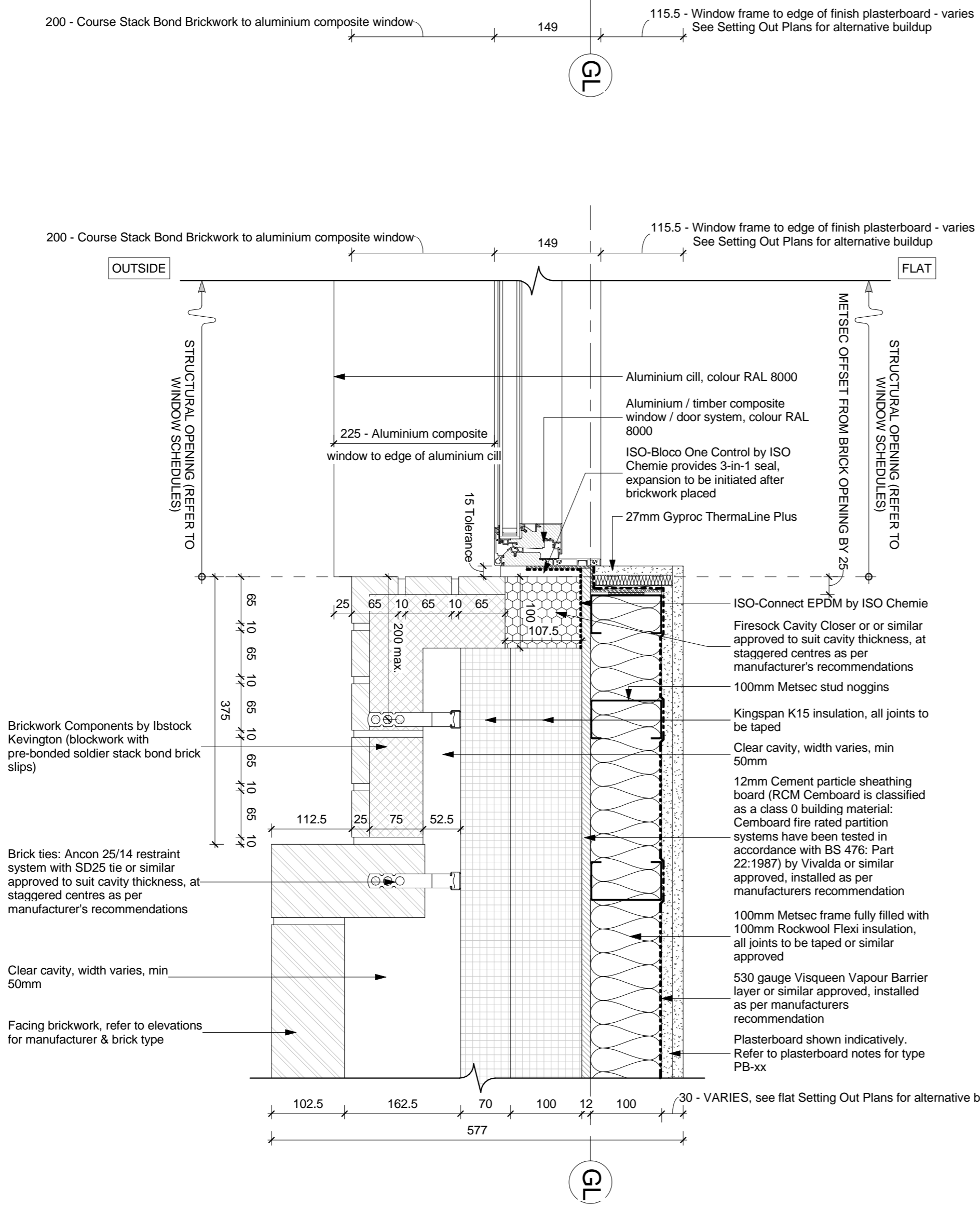


1  
1:5  
Typical jamb detail (Soldier Course Banding) - upper window of brick panel (shallow sill) @ East, South & West Elevation at 10th Floor



2  
1:5  
Typical Central jamb detail - upper window of brick panel (shallow sill) @ East & South Elevation



3  
1:5  
Typical jamb detail - upper window of brick panel (shallow sill) @ East, South & West Elevation

Masonry Wall Tie Spacing

Distance along wall	Horizontal Spacing	Vertical Spacing
Max. 900mm	Max. 450mm	Max. 450mm
Max. 225mm	Max. 300mm	Max. 300mm

Note: Wall ties along wall may correspond to table above or alternatively be spaced such as not to be less than 2.5 times. Wall ties to be installed as per manufacturer instructions.

ALL JUNCTIONS BETWEEN INTERNAL CEILING & INTERNAL WALLS AND PENETRATIONS IN AIR BARRIERS TO BE SEALED WITH LEAKABLE SEALANT. ALL PLASTERBOARD JOINT LOCATIONS TO BE TAPED AND JOINT FINISH. ALL PLASTERBOARD ON DIPS TO HAVE CONTINUOUS BEBON OF ADHESIVE AROUND ALL OPENINGS, ALONG TOP AND BOTTOM OF WALL AND AT INTERNAL AND EXTERNAL CORNERS. DETAILS TO BE READ IN CONJUNCTION WITH SECTIONS & GA PLANS - REFER TO SUITABLE PLASTERBOARD TYPE.

**NOTE**  
Wall tie secure shown indicatively. Set outs & distances between ties to be installed as per manufacturer instructions.

DO NOT SCALE

**GENERAL NOTES**  
This drawing should be read in conjunction with all relevant consultant drawings and specifications. Setting out dimensions and sizing of all RC elements should be taken from structural engineer's drawings and documentation.

PROPOSED U-VALUE TO ACHIEVE

Ground Floor	0.11 W/m <sup>2</sup> K
External Wall - Brickwork with Mastic	0.10 W/m <sup>2</sup> K
External Wall - Brickwork with Blockwork	0.11 W/m <sup>2</sup> K
Separating Walls: Flat / Commercial Areas	TBC
Separating Walls: Flat / Lift Shaft	TBC
Separating Walls: Flat / Flat Party Walls	0.0*
Floor	0.11 W/m <sup>2</sup> K
External Oblique Doors	1.0 W/m <sup>2</sup> K
External Windows	1.3 W/m <sup>2</sup> K (g-value of 0.69)
External Glazed Doors	1.5 W/m <sup>2</sup> K (g-value of 0.69)
AIR PERMEABILITY	4m <sup>3</sup> /m <sup>2</sup> h

\* Confirms to be fully filled with mineral wool

**Ingleton Wood**  
Vision, form and function

**Client:** Lovell Partnership Ltd.

**Project:** Regents Park Estate  
Plot 4 - Newlands  
Hampstead Road  
London NW1 1PS

**Project No:** 84923

**Scale:** 1:5

**Sheet:** S4

**Proposed name:** Construction