

Redline to be verified by LB Camden. It is assumed that the contractor will carry out works on the Highways under a section 278 agreement to ensure a high quality project with consistency of materials and detailing.

Refuse + recycling bins

1100mm high gate
See detail 114 RPE GI 100

Granite kerb entrance mat
See detail 114 RPE GI 700

Magnolia 'Sayonara' in planter
See detail 114 RPE S6 102

Grasses and perennials:
Deschampsia cespitosa
Allium hollandicum 'Purple Sensation'
Echinacea purpurea
Verbena bonariensis

Granite kerb entrance mat
See detail 114 RPE GI 700

5 new visitor cycle stands
Model *Sheffield* from Broxap

Hedging (1.5m height):
Ligustrum ovalifolium

Hamamelis x intermedia 'Jelena'

Ground Floor Plan



Cast in-situ concrete plinth
High 450mm with 3mm chamfered arris edges

Visitor cycle stands
Model *Sheffield* from Broxap

Hedging (0.5m height):
Buxus sempervirens

Climbing plants:
Akebia quinata
Passiflora caerulea
Passiflora x violacea

Drainage channel reusing the existing granite setts

POLICE STATION

New ramp

Existing gully

Turning point for refuse vehicles

1100mm high railings
See detail 114 RPE GI 100

New steps

Raised planter

Hamamelis x intermedia 'Barmstedt Gold'

Dicentra 'Stuart Boothman'

Saxifraga tortunei

Galanthus nivalis

Group of chasse-roue
See detail 114 RPE GI 600

Reclaimed granite cobbles from existing car parking to be re-used to extend around new block and vehicle turning head
Granite cobbles to be supplemented by reclaimed granite cobbles to match existing if insufficient quantities of on site material

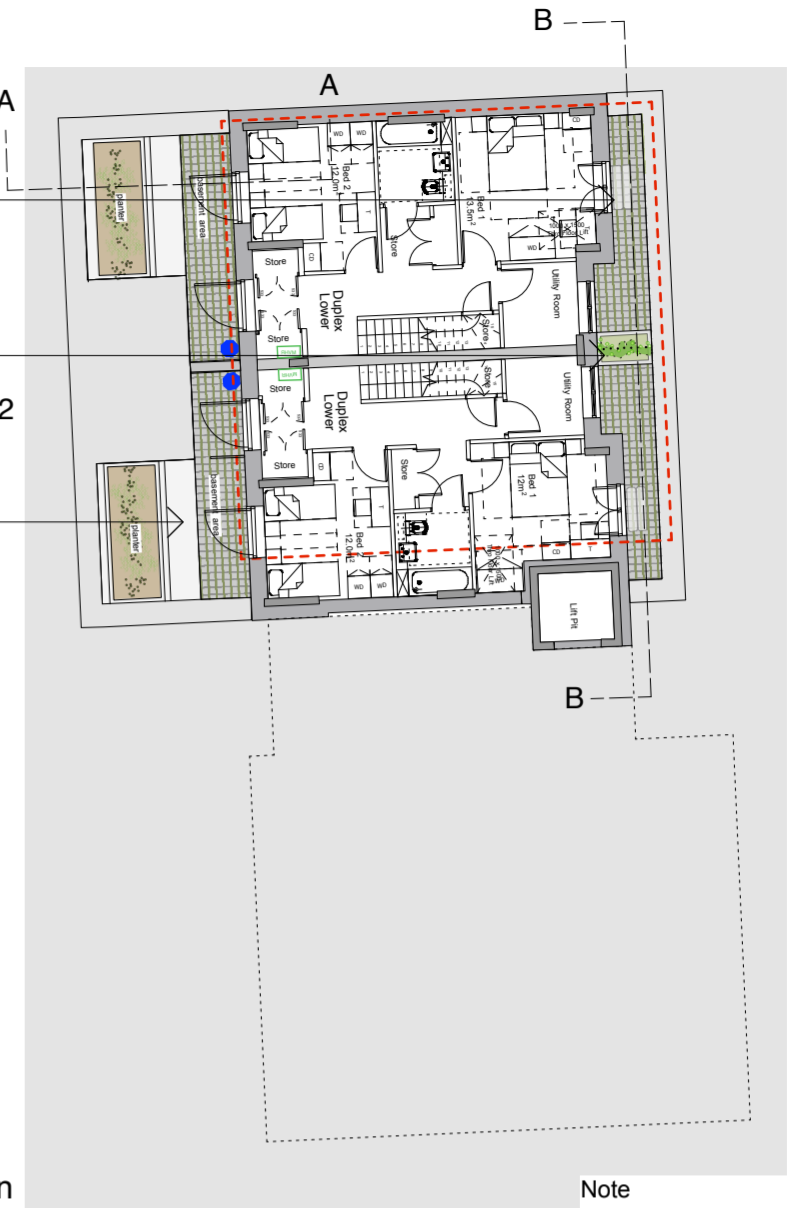
Chasse-roue
See detail 114 RPE GI 600

Granite kerb entrance mat
See detail 114 RPE GI 700

Concrete planter
See detail 114 RPE S6 101 & 102

Cast in-situ concrete bench-planter with:
Akebia quinata
Pulmonaria officinalis
Geranium phaeum
Adiantum aleuticum
Galanthus nivalis
See detail 114 RPE S6 101

Basement Plan



KEY

- Existing tree retained
- New special tree on corners
- Existing tree removed
- Evergreen hedges
- Ornamental grasses + perennials
- Pebbles with mosses/low ground cover
- Seating
- Staffordshire blue Paving
- Granite setts 200x100mm
- Breedon gravel
- Concrete flags
- Reused granite kerbs 300mm wide
- Chasse-roue (reused bollard)
- In situ concrete
- Highway boundaries
- Water butt

Note

All drawings to be read in conjunction with architects and engineer's drawings, relevant details, planting and material schedules, specifications and manufacturer's details.

The accuracy of the survey base drawing is dependent upon the scale at which it is produced. Users should not re-scale this drawing without consent.
DO NOT SCALE OFF DRAWING

Tx
Refer to arboricultural tree survey schedules for detail on existing trees

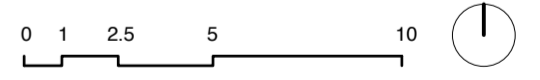
REVISIONS

DATE	REV	NOTES
26/06/15	A	Amended project boundary line

East
Architecture landscape urban design

Unit 8
49-59 Old Street
London EC1V 9HX
T 020 7490 3190
E mail@east.uk.com

www.east.uk.com



PROJECT

Regent's Park Estate

CLIENT

LB Camden

DRAWING STATUS

STAGE 3

DATE

August 2015

SCALE

1:200

SIZE

A2

REV

A

DRAWING TITLE

Proposed site plan
Plot 6 / Cape of good hope

DRAWING NR

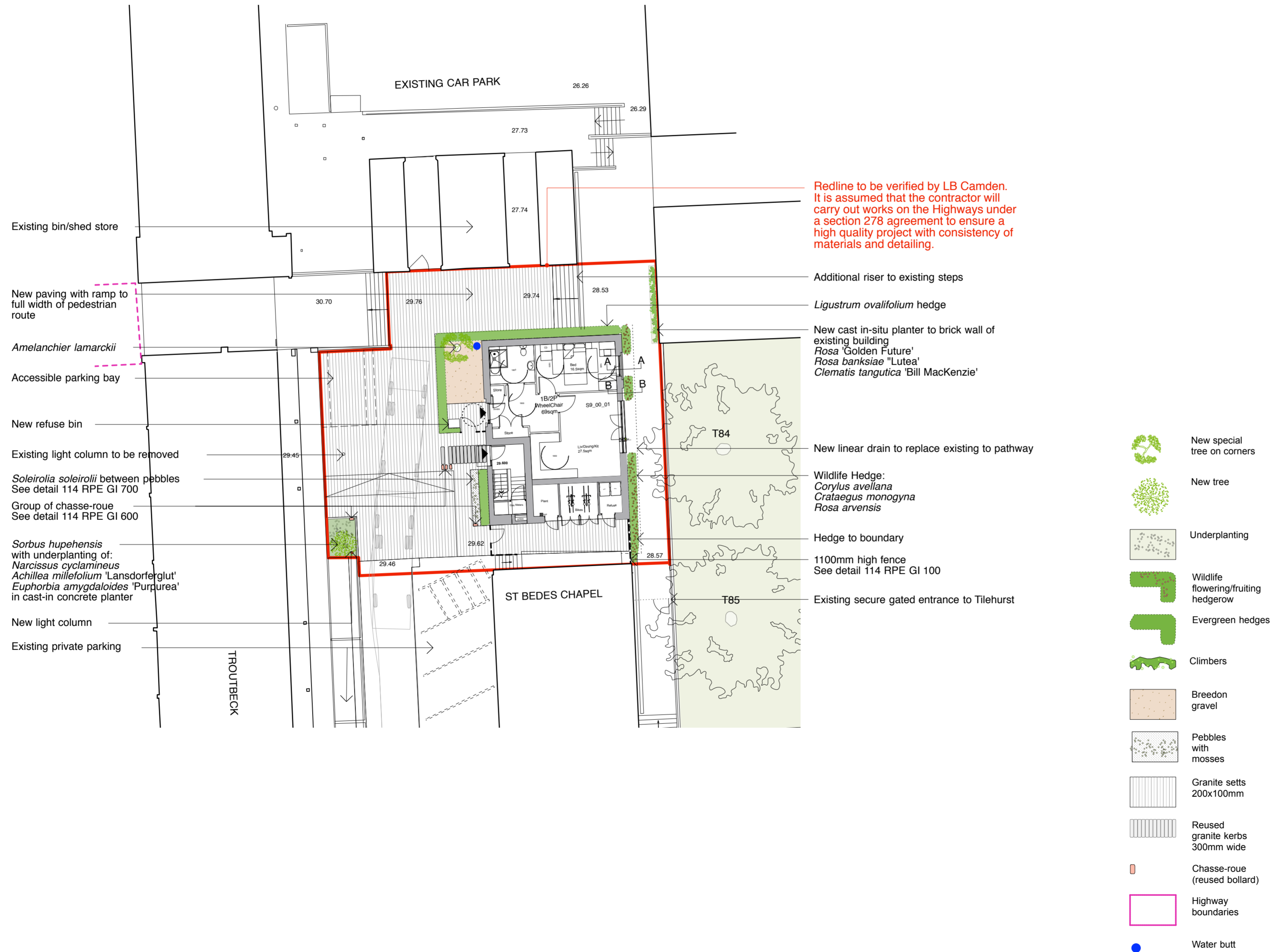
114 RPE S6 100

Note

All drawings to be read in conjunction with architects and engineer's drawings, relevant details, planting and material schedules, specifications and manufacturer's details.

The accuracy of the survey base drawing is dependent upon the scale at which it is produced. Users should not re-scale this drawing without consent.
DO NOT SCALE OFF DRAWING

Tx
Refer to arboricultural tree survey schedules for detail on existing trees

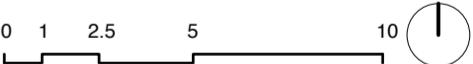


Redline to be verified by LB Camden. It is assumed that the contractor will carry out works on the Highways under a section 278 agreement to ensure a high quality project with consistency of materials and detailing.

REVISIONS

DATE	REV	NOTES
26/06/15	A	Amended project boundary line

East Architecture landscape urban design
Unit 8
49-59 Old Street
London EC1V 9HX
T 020 7490 3190
E mail@east.uk.com
www.east.uk.com



PROJECT
Regent's Park Estate
CLIENT
LB Camden

DRAWING STATUS	DATE	SIZE	REV
STAGE 3	August 2015	A2	A

DRAWING TITLE
Proposed site plan
Plot 9 / St. Bedes
Mews
DRAWING NR
114 RPE S9 100

- New special tree on corners
- New tree
- Underplanting
- Wildlife flowering/fruited hedgerow
- Evergreen hedges
- Climbers
- Breendon gravel
- Pebbles with mosses
- Granite setts 200x100mm
- Reused granite kerbs 300mm wide
- Chasse-roue (reused bollard)
- Highway boundaries
- Water butt

