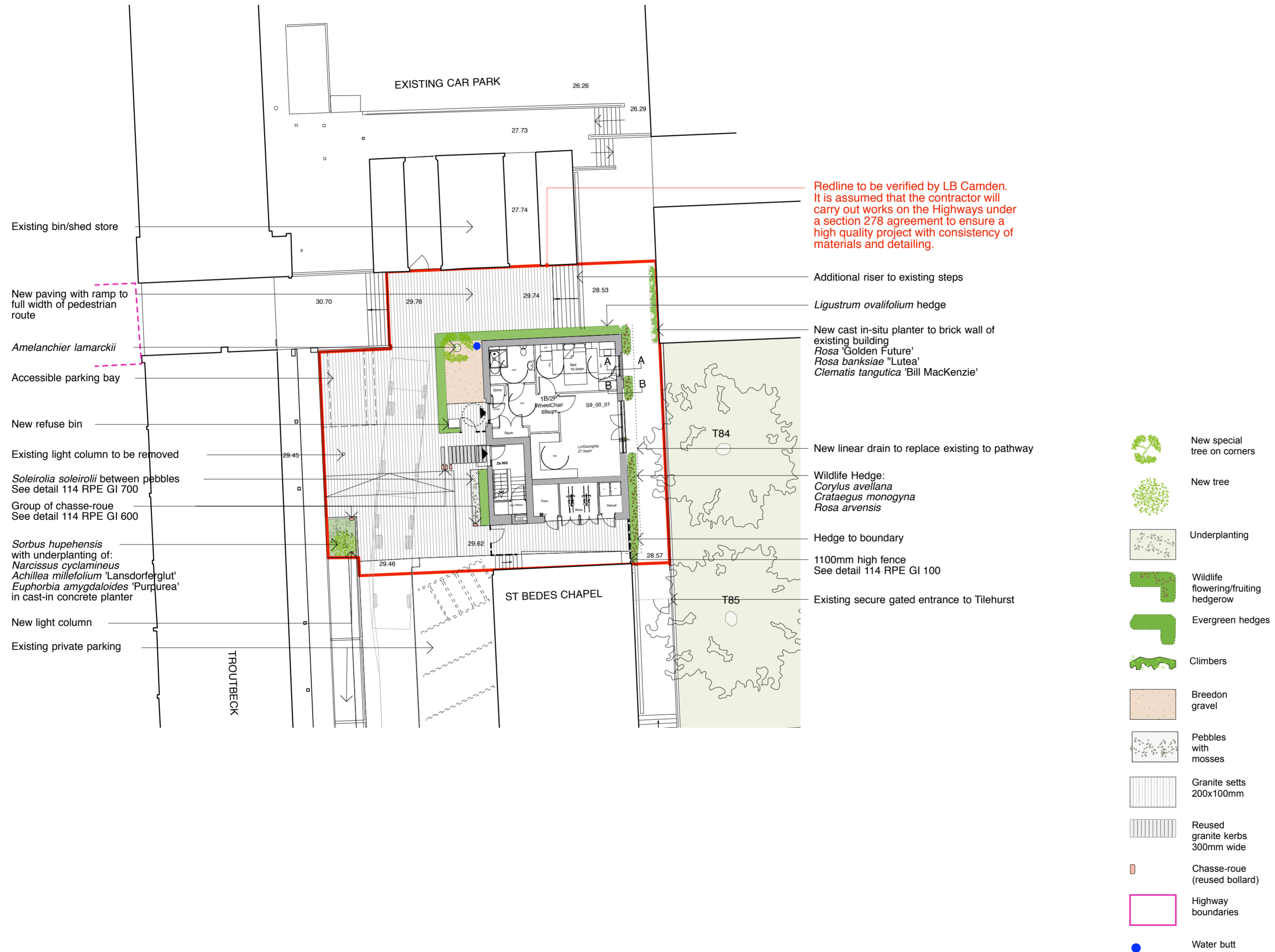


Note

All drawings to be read in conjunction with architects and engineer's drawings, relevant details, planting and material schedules, specifications and manufacturer's details.

The accuracy of the survey base drawing is dependent upon the scale at which it is produced. Users should not re-scale this drawing without consent.  
DO NOT SCALE OFF DRAWING

Tx  
Refer to arboricultural tree survey schedules for detail on existing trees

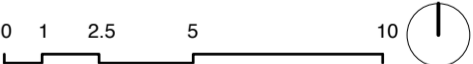


Redline to be verified by LB Camden. It is assumed that the contractor will carry out works on the Highways under a section 278 agreement to ensure a high quality project with consistency of materials and detailing.

REVISIONS

DATE	REV	NOTES
26/06/15	A	Amended project boundary line

East Architecture landscape urban design  
Unit 8  
49-59 Old Street  
London EC1V 9HX  
T 020 7490 3190  
E mail@east.uk.com  
www.east.uk.com



PROJECT  
**Regent's Park Estate**  
CLIENT  
LB Camden

DRAWING STATUS	DATE	SIZE	REV
STAGE 3	August 2015	A2	A

DRAWING TITLE  
Proposed site plan  
Plot 9 / St. Bedes  
Mews  
DRAWING NR  
114 RPE S9 100

- New special tree on corners
- New tree
- Underplanting
- Wildlife flowering/fruited hedgerow
- Evergreen hedges
- Climbers
- Breendon gravel
- Pebbles with mosses
- Granite setts 200x100mm
- Reused granite kerbs 300mm wide
- Chasse-roue (reused bollard)
- Highway boundaries
- Water butt