

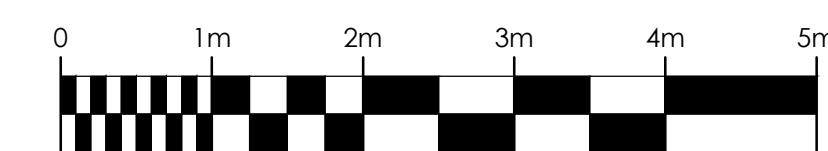


## FALKERSTONE LIMITED

A 10.02.16 DRAWING TITLE REVISED. MRK  
B 16.02.16 PARTY WALL DETAIL ADDED. MRK  
C 18.02.16 Corner Shop glazing shown. MRK

..... 3600mm high hoarding to  
face of scaffold

..... 4300mm high hoarding to  
shopfront areas



JWA Architects Limited  
Robert Tresham House,  
Clipston, Market Harborough,  
Leicestershire LE16 9RZ

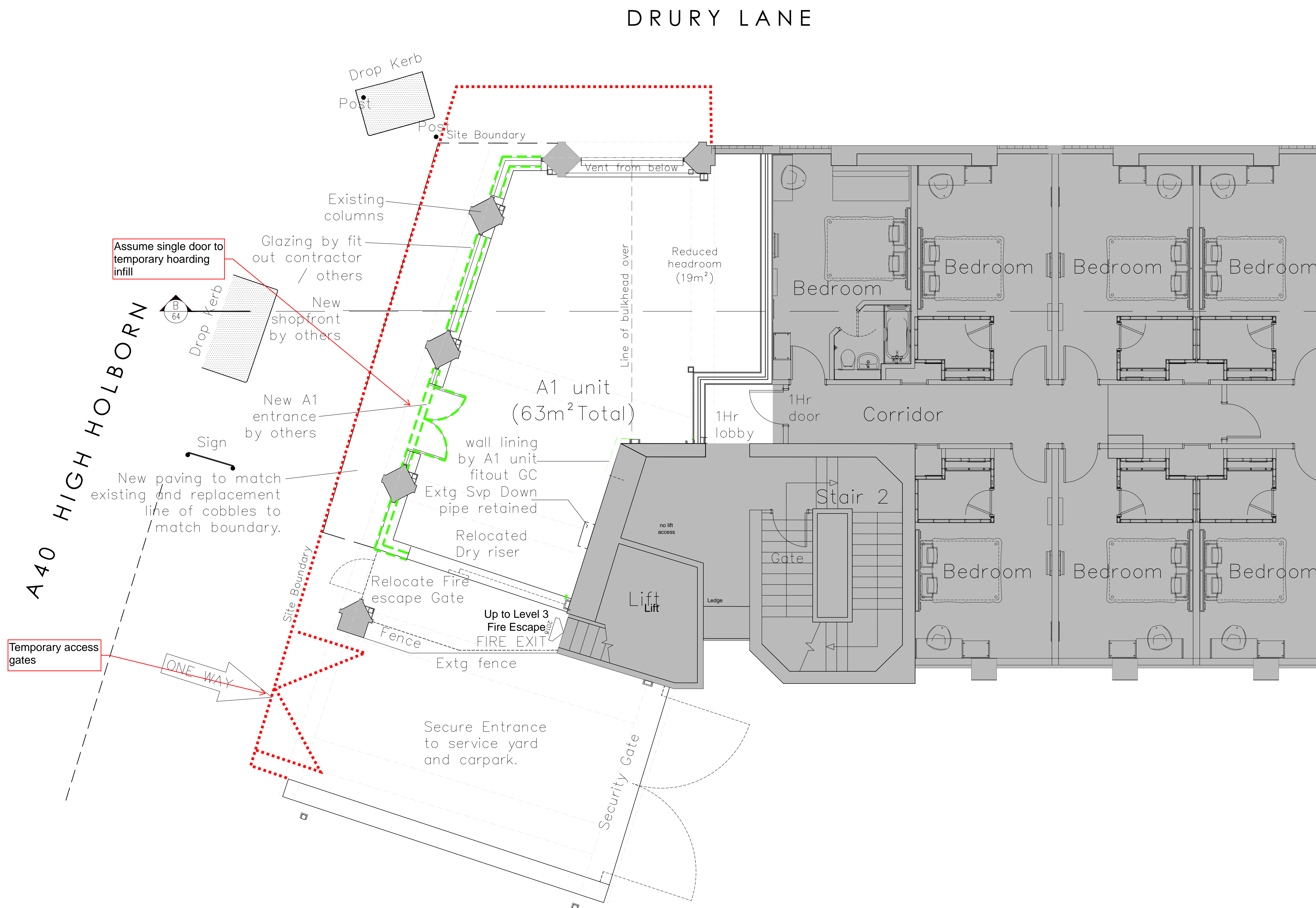
T +44 (0) 1858 525343  
F +44 (0) 1858 525527  
E office@jwa-architects.co.uk  
W www.jwa-architects.co.uk

Client: **Barnes**  
CONSTRUCTION

Project: TRAVELODGE  
DRURY LANE  
COVENT GARDEN

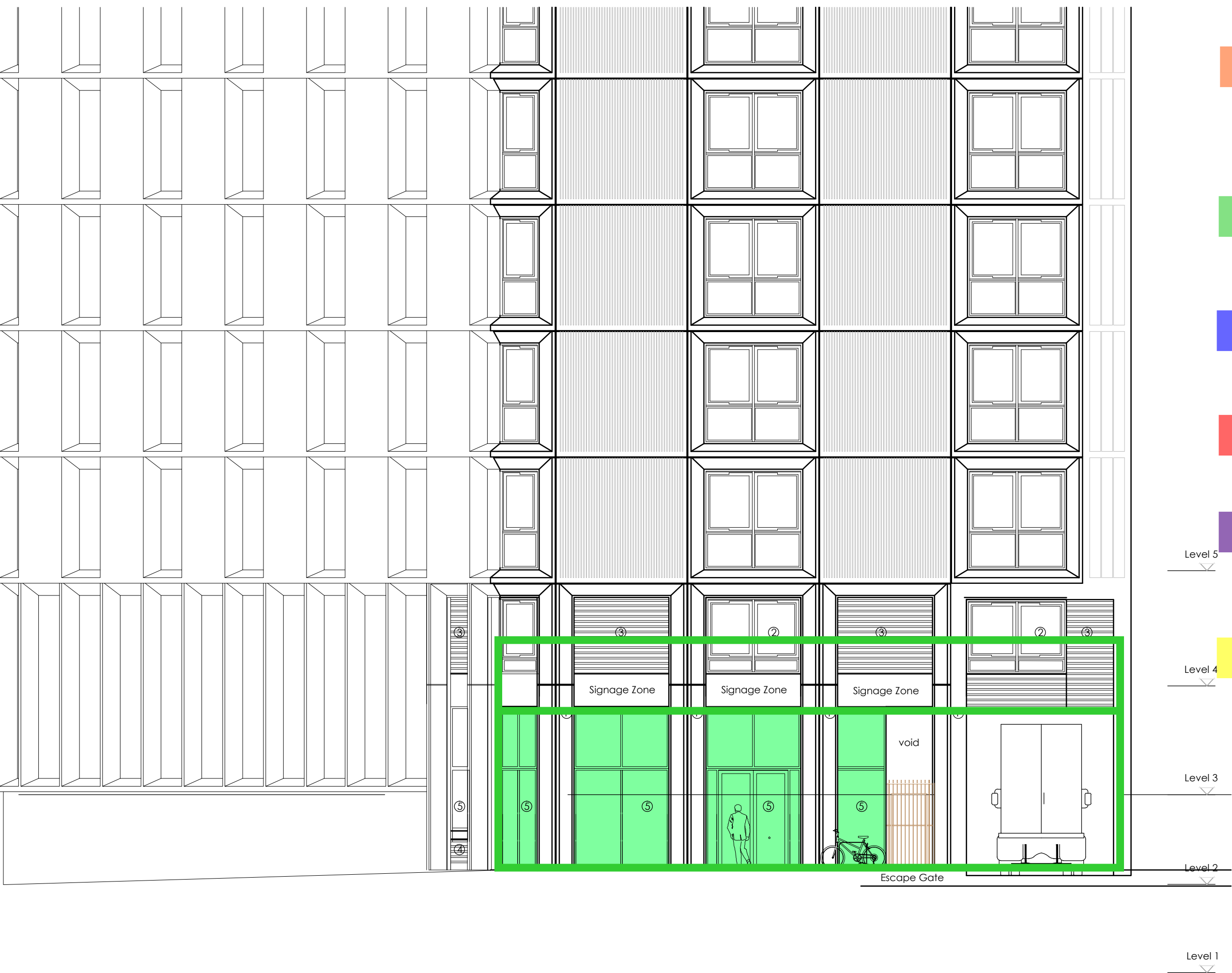
Drawing: PROPOSED LEVEL 2  
(UPPER GROUND FLOOR)

Purpose: PRELIMINARY Date: 29.01.16  
Scale: 1:50 @ A1 Drawn: NW  
Dwg. No: J8710/08 Revision: C



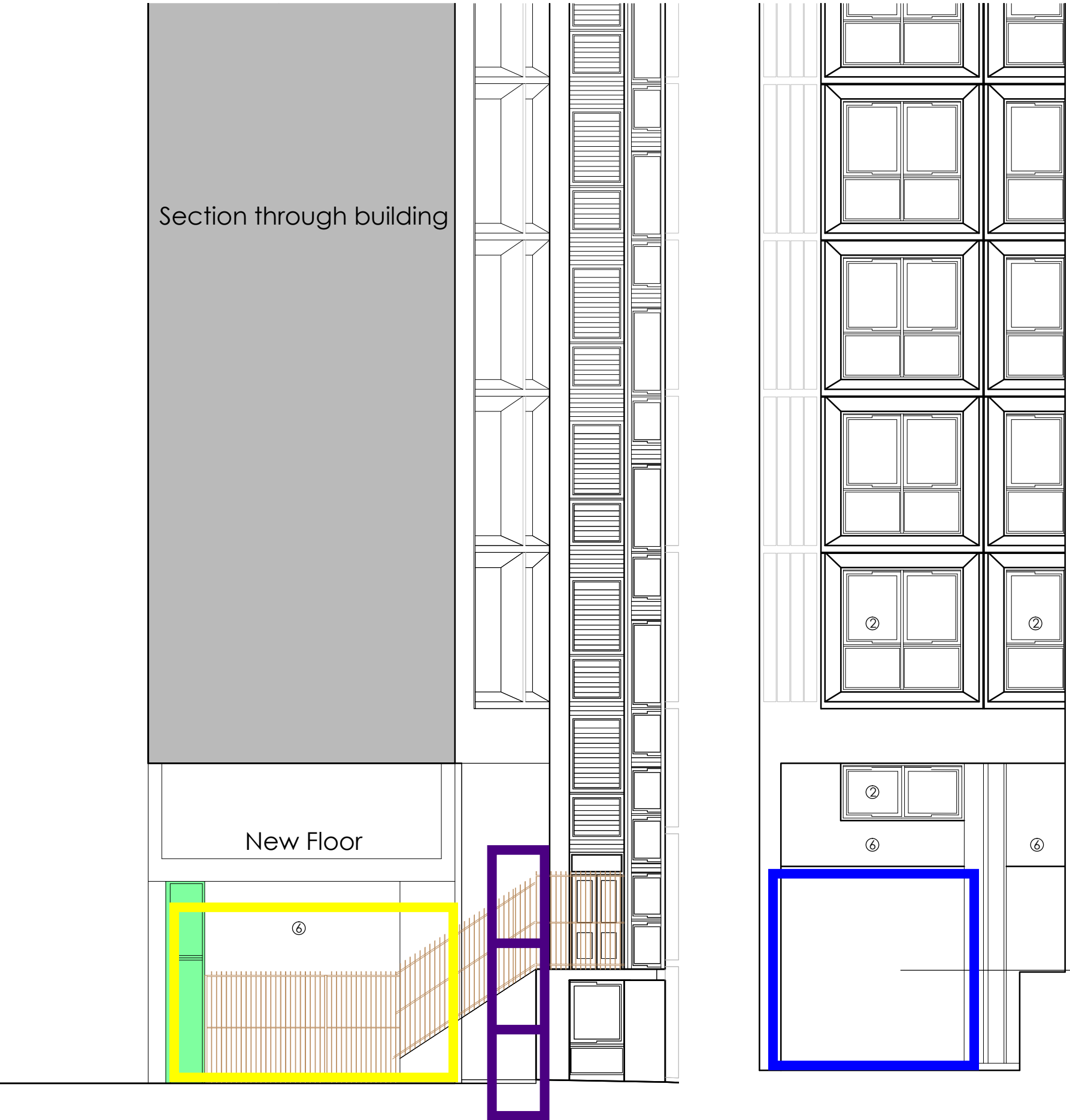
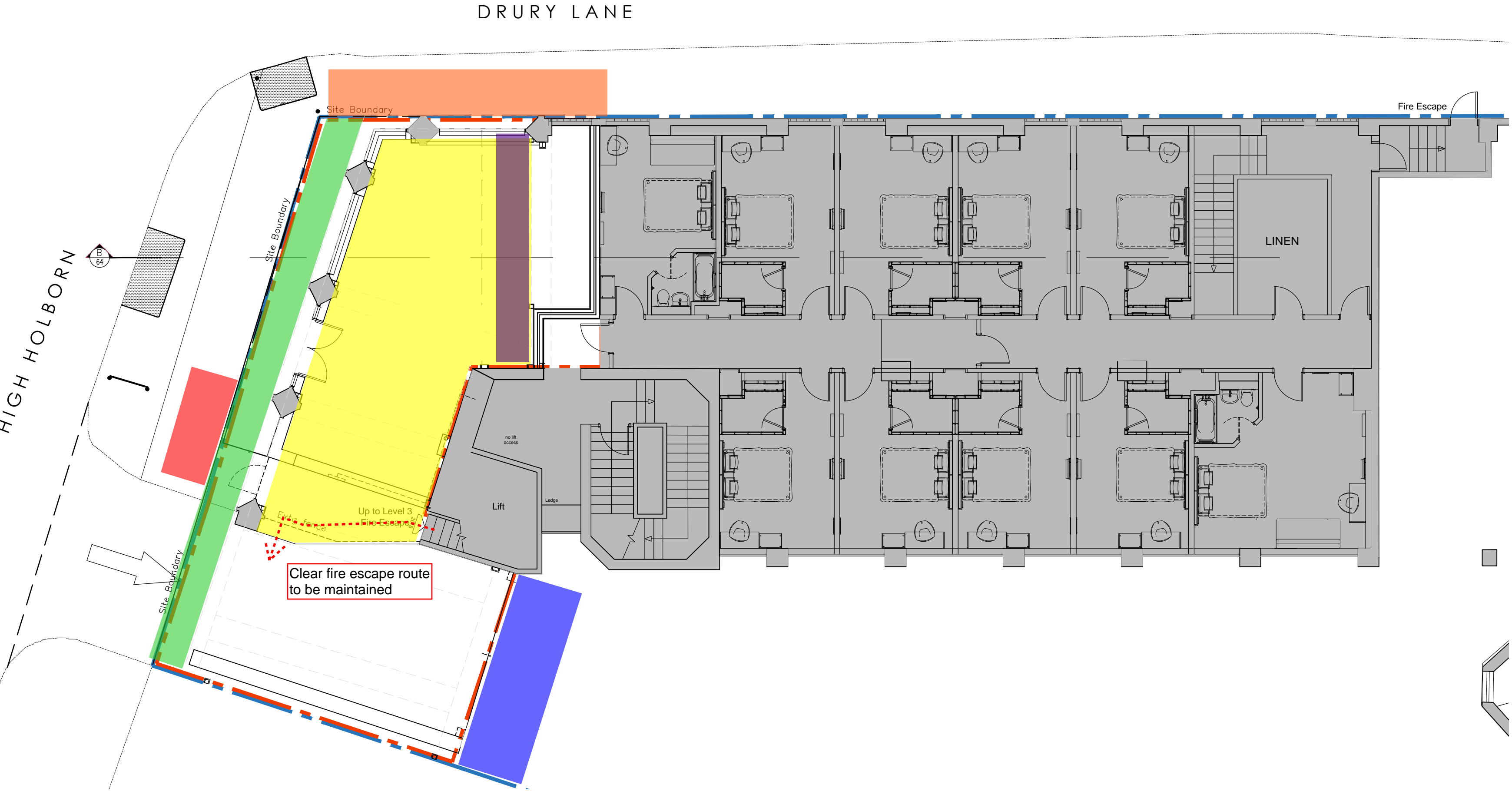


Drury Lane Elevation



High Holborn Elevation

- Access scaffold comprising 2no boarded lifts 6 boards wide and triple handrail at head. Form walkway beneath (with additional boarded lift as head protection) for public access min 2500mm clear head height. Scaffold to be set min 450mm from kerb face.
  - Access scaffold comprising 2no boarded lifts 4 boards wide and triple handrail at head. Allow for ladder beam support over drive-thru.
  - Loading bay / access scaffold with 1no boarded lift 8 boards wide, ladder beam support over drive-thru. Handrail to 2 sides and loading bay gates. Ladder access.
  - Haki stair access to boarded lifts
  - Access scaffold comprising 3no boarded lifts 4 boards wide and triple handrail at head. Ladder access to be provided. Scaffold constructed from existing low level paving.
  - Birdcage scaffold constructed off new floor with fully boarded deck, handrails to perimeter. Ladder access adjacent fire escape staircase.
- Note: Barnes to arrange and pay for all necessary licences and fees for scaffold on public footpaths.



Elevation B

Elevation A

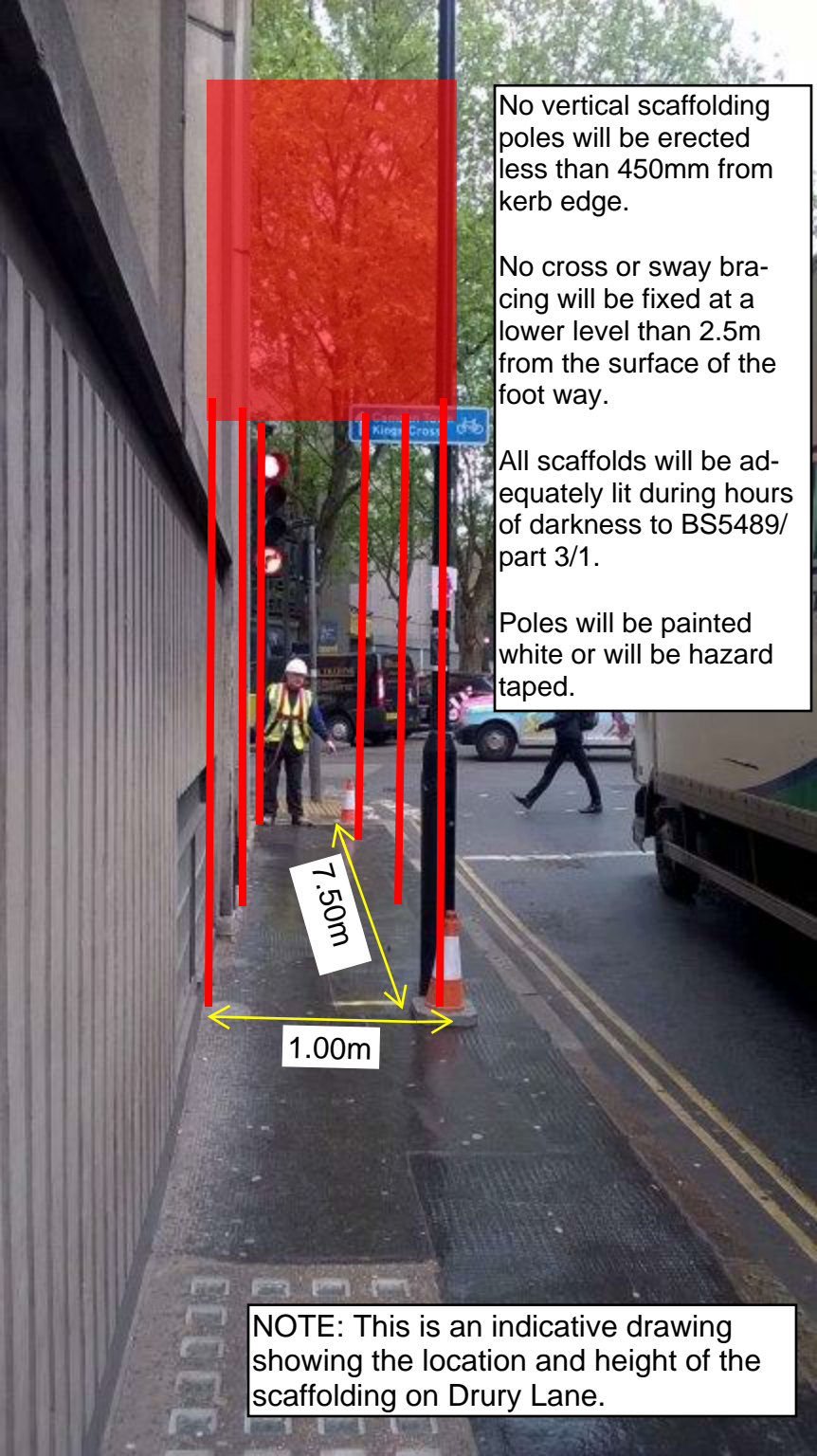
TRAVELODGE COVENT GARDEN

INFILL SCHEME SCAFFOLD REQUIREMENTS

GB/BC1725







No vertical scaffolding poles will be erected less than 450mm from kerb edge.

No cross or sway bracing will be fixed at a lower level than 2.5m from the surface of the foot way.

All scaffolds will be adequately lit during hours of darkness to BS5489/ part 3/1.

Poles will be painted white or will be hazard taped.

7.50m

1.00m

NOTE: This is an indicative drawing showing the location and height of the scaffolding on Drury Lane.

No doors or gates shall be constructed in such a way that they may be opened outwards onto the public way.



NOTE: This is an indicative drawing showing the location and height of the hoarding on High Holborn.