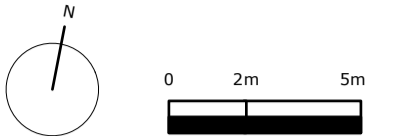


PLANNING ISSUE

Check all dimensions on site. Do not scale off drawings without prior consultation. Any discrepancies to be reported to architects before execution of relevant works. This drawing has been produced for LB Camden for the works at Edith Neville Primary School and for that application alone and is not intended for use by any other person or for any other purpose. Drawings remain copyright of Hayhurst and Co. and may not be reproduced without written consent or licence.



Re-issued for planning approval. 06.05.16 R1
 Pupil bike store added
 Issue/Revision Date Rev

Project:	
New Build Primary School Edith Neville Primary School	
Hayhurst and Co.	
25 Fournier Street, London, E1 6QE T: (020) 7247 7028 F: (020) 7247 7029 E: mail@hayhurstand.co.uk www.hayhurstand.co.uk	
Subject:	Ground Floor Plan - Proposed
Scale:	1:200
Original Size:	A1
Issue/Revision:	Date: 27.11.2015
Drawing No.:	176 A101 R1