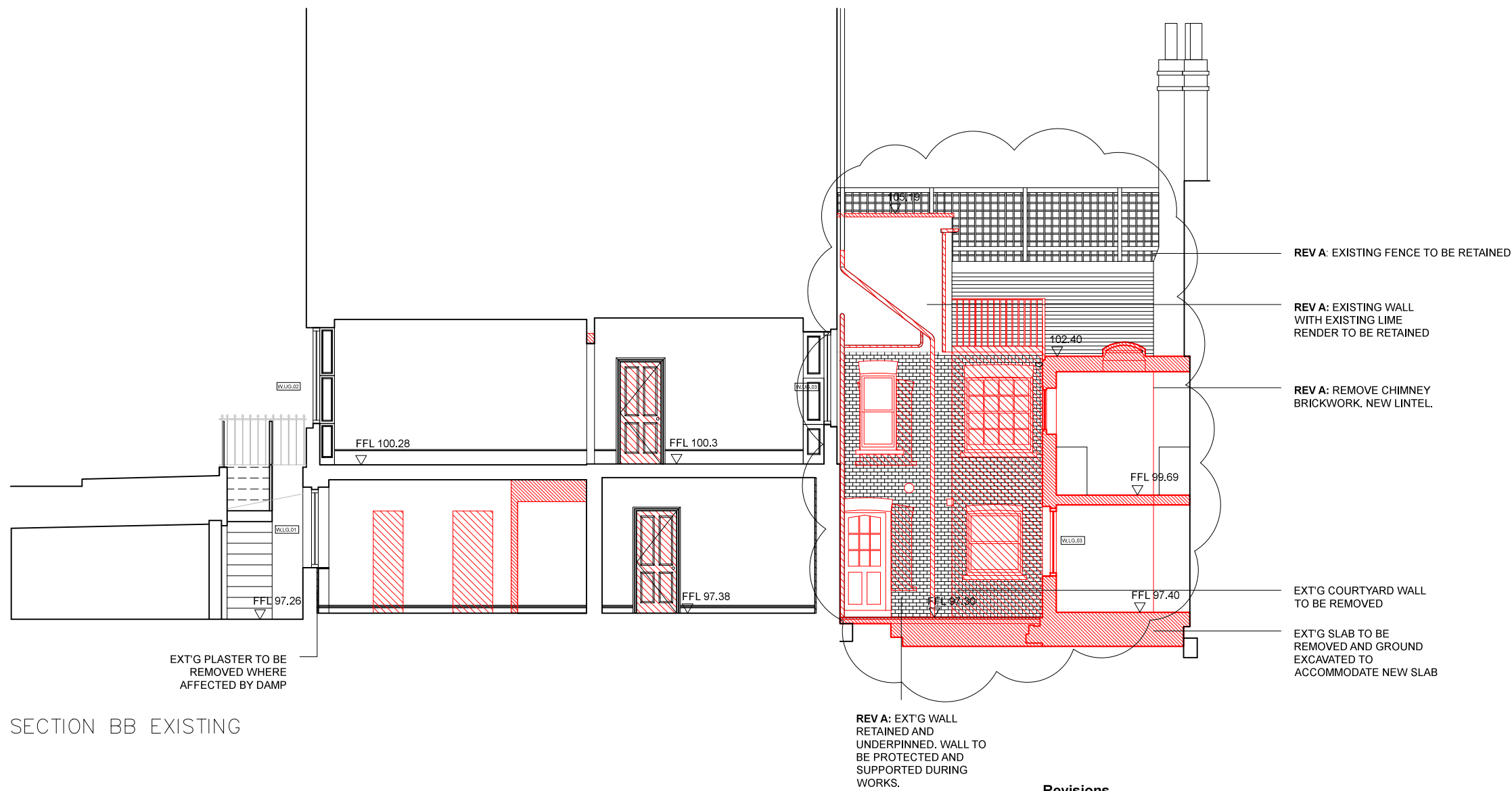


DEMOLITIONS KEY

AREA TO BE DEMOLISHED

ITEM TO BE DEMOLISHED



SECTION BB EXISTING

SCALE: METRES



NOTES

Architecture for London Limited

This drawing is copyright. All rights reserved.
Do not scale from this drawing: work from figured
dimensions only.

82–84 Clerkenwell Road London EC1M 5RF
e: mail@architectureforlondon.co.uk

t: 020 3637 4236

w: www.architectureforlondon.co.uk

Revisions

A 25/04/16 PARAPET HEIGHTS CORRECTED, ORIGINAL PLANNING NOTES ADDED
BACK, EXISTING WALL TO BE RETAINED, ALL IN LINE WITH PLANNING
COMMENTS

PROJECT TITLE		23 CONWAY STREET	
DRAWING TITLE		SECTION BB EXISTING – AMENDMENTS	
DWG STATUS		PLANNING AMENDMENT	
DRAWN	CM	FILE xxx	DATE 09–11–15
CHECKED	TD	JOB NO. 1407	SCALE 1:100 @ A3
REVISION		A	
DWG NO.		PL–210	