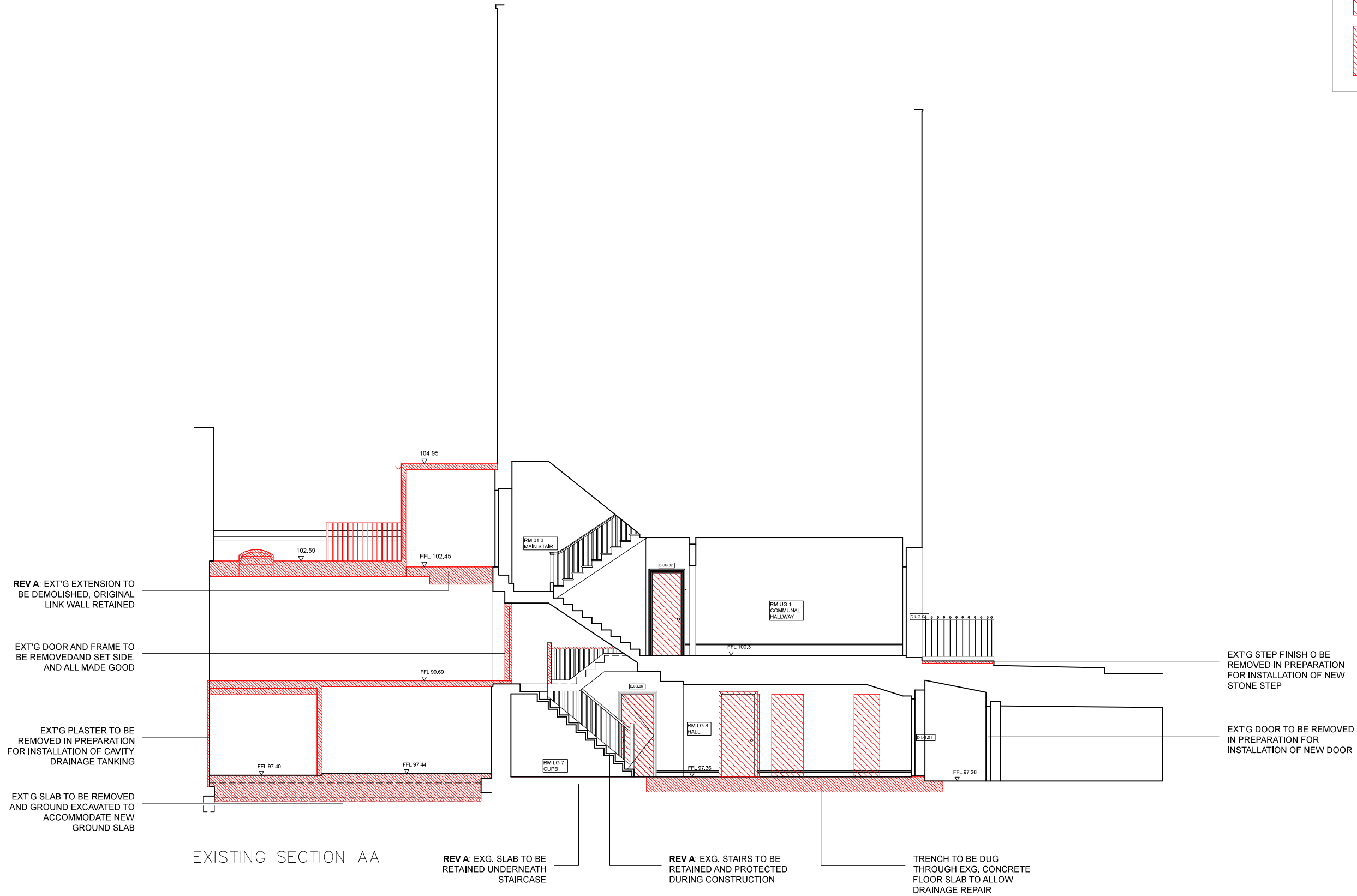


DEMOLITIONS KEY

AREA TO BE DEMOLISHED

ITEM TO BE DEMOLISHED



NOTES

Architecture for London Limited

This drawing is copyright. All rights reserved.
Do not scale from this drawing: work from figured dimensions only.

SCALE: METRES



82-84 Clerkenwell Road London EC1M 5RF
e: mail@architectureforlondon.co.uk

t: 020 3637 4236

w: www.architectureforlondon.co.uk

Revisions

A 25/04/16 ORIGINAL PLANNING NOTES ADDED BACK, EXISTING LINK WALL TO BE RETAINED, ALL IN LINE WITH PLANNING COMMENTS

PROJECT TITLE		23 CONWAY STREET	
DRAWING TITLE		EXISTING SECTION AA – AMENDMENTS	
DWG STATUS		PLANNING AMENDMENT	
DRAWN	CM	FILE xxx	DATE 09-11-15
CHECKED	TD	JOB NO. 1407	SCALE 1:100 @ A3
REVISION		A	
DWG NO.		PL-208	