

Floor Plan (1:50)

KEY / NOTES

Emergency maintained fitting with integral 3 hour battery backup to BS 5266 incorporated Running Man symbol and arrow in direction indicated

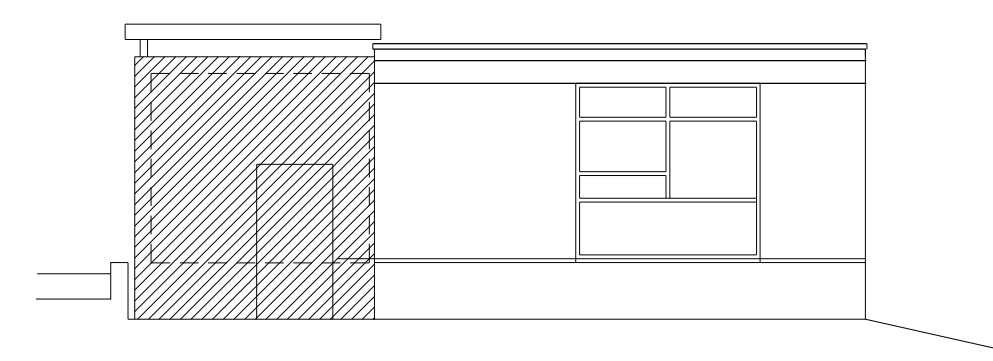
Self-contained/ non-maintained Emergency Light to BS 5266 with integral 3 hour battery backup

NOTE - FIRE DETECTION & ALARM SYSTEM:
It is normally a requirement of the consulting Fire Officer that the new room is interlinked with the existing fire alarm system.
The Universitys Fire Risk Assessment must be amended to consider the new new room and changes implemented.
The required design and installation of an extended fire alarm system is to be undertaken by others.

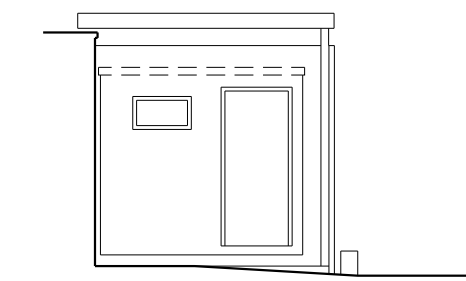
NOTE - HEATING SYSTEM:
System details awaited from supplier.
Type: split air to air heat pump.
All power supply/ equipment positions to be detailed by supplier when confirmed.

NOTE - LIGHTING PROVISION:
Layout & details awaited from supplier.
All power supply/ equipment positions to be detailed by supplier when confirmed.
Building Regulations minimum emergency lighting requirements only indicated on this drawing.

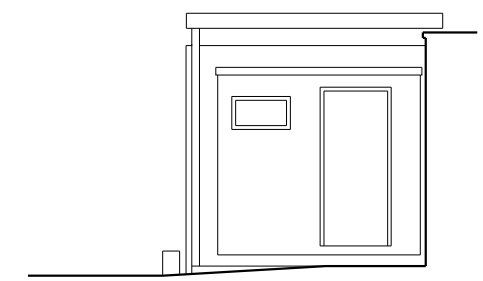
DOOR WIDTHS
Entrance doors to have a min clear opening of 825mm
Internal doors (excluding stores) to be 1981 x 864



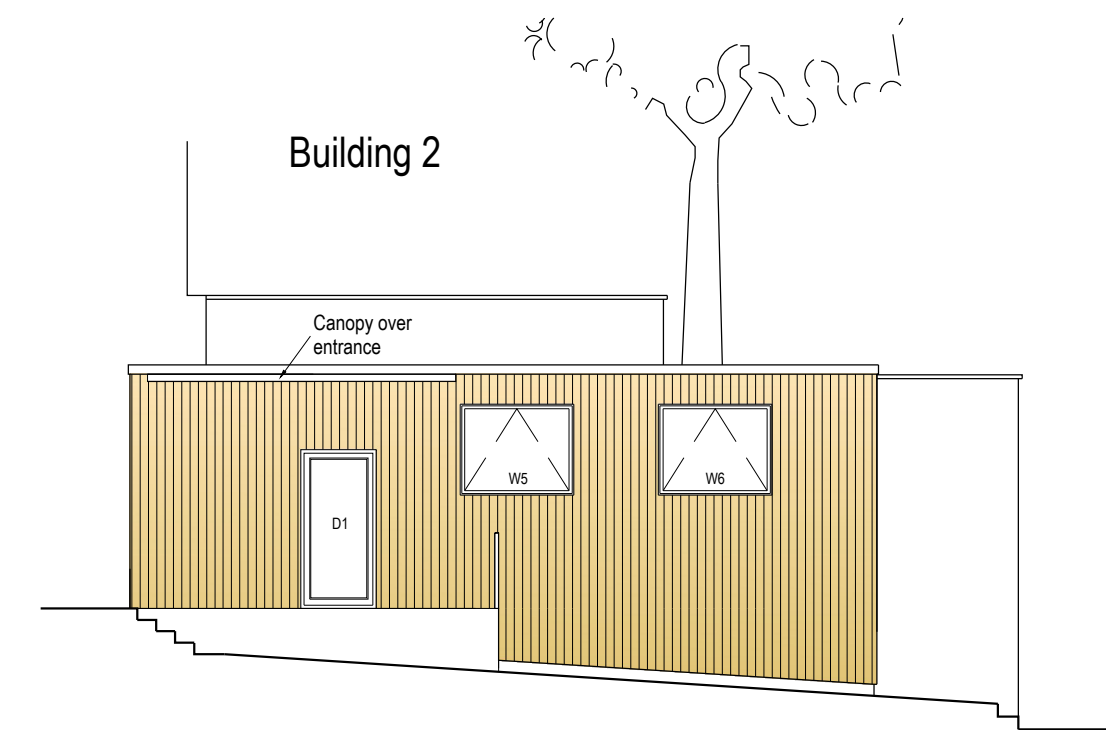
Elevation F



Elevation H



Elevation G



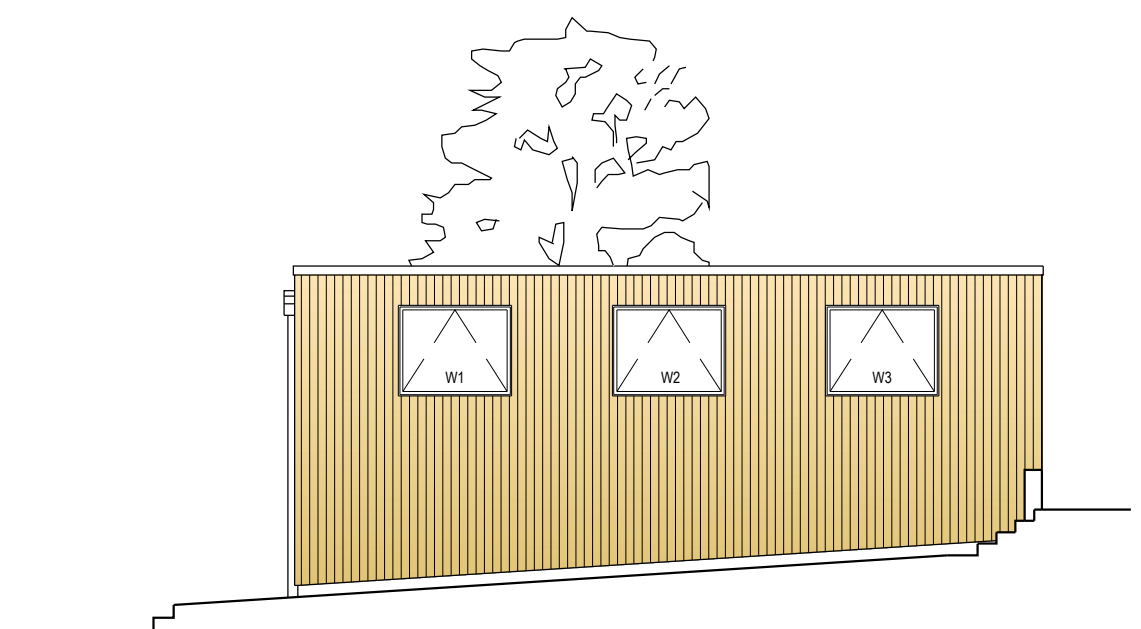
Elevation D



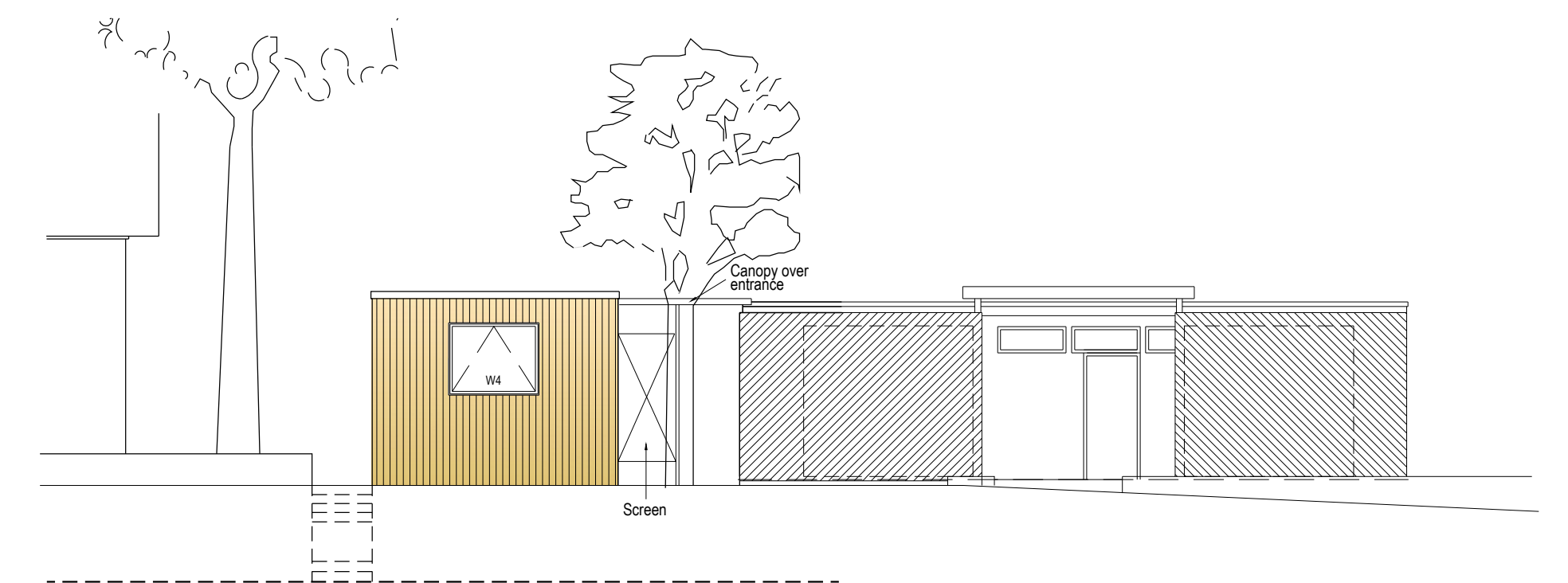
Elevation E



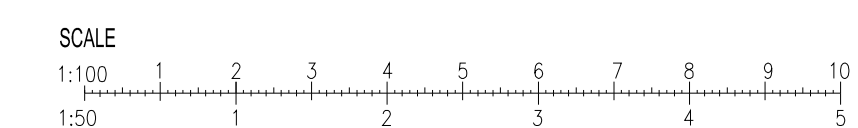
Elevation C



Elevation B



Elevation A (Entrance)



A	7/4/2016	Balustrade indicated between new and existing
REV.	DATE	DESCRIPTION
New 'Qube' BUILDING CONTROL		
DRG. 5055/ 4A		
SCALE	1:50 & 1:100	SHEET SIZE A1
DATE	19.02.2016	
DRN/CHO	IB	
University College London, Gower Street, London, WC1E		
The Qube		
26 Abington Grove Northampton NN1 4DQ mick@theqube.co.uk www.theqube.co.uk		