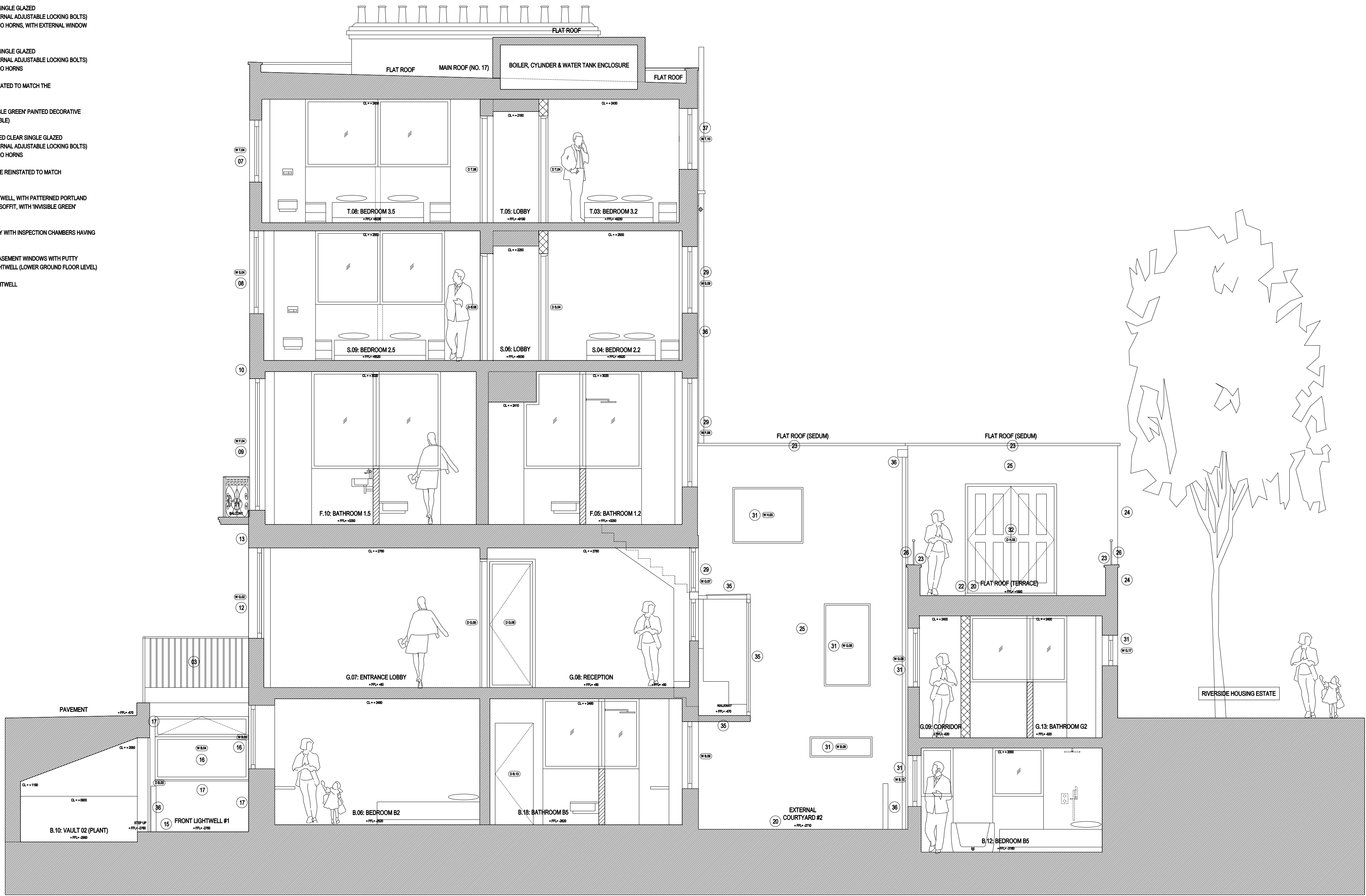


KEY / DESCRIPTION OF FIT-OUT WORKS:

FRONT WORKS:

- 01 PATTERNED PORTLAND STONE TREADS AND RISERS FORMING GROUND FLOOR EXTERNAL ENTRANCE STEPS
- 02 PATTERNED PORTLAND STONE TO GROUND FLOOR EXTERNAL ENTRANCE AREA
- 03 EXISTING METAL RAILINGS AND GATES TO BE PAINTED 'INVISIBLE GREEN'
- 04 OMITTED
- 05 BLACK PAINTED HARDWOOD 6-PANEL MOULDED SOLID TRADITIONALLY DETAILED SINGLE DOOR WITH BRONZE IRONMONGERY AND CLEAR SINGLE GLAZED ARCHED FANLIGHT WITH PUTTY FILLETS ABOVE
- 06 BLACK PAINTED HARDWOOD 4-PANEL MOULDED SOLID TRADITIONALLY DETAILED SINGLE WIDE DOOR WITH PLASTERERS EITHER SIDE, BRONZE IRONMONGERY AND CLEAR SINGLE GLAZED ARCHED FANLIGHT WITH PUTTY FILLETS ABOVE (WITH '17' FILM LETTERING)
- 07 WHITE PAINTED HARDWOOD 6-OVER-6 TRADITIONALLY DETAILED CLEAR SINGLE GLAZED SLIDING SASH WINDOW (BOTTOM PANE & TOP PANE OPENABLE WITH INTERNAL ADJUSTABLE LOCKING BOLTS) WITH PUTTY FILLETS AND LAMBS TONGUE STRUCTURAL GLAZING BARS, NO HORNS, WITH EXTERNAL WINDOW REVEAL TO BE WHITE PAINTED RENDERED
- 08 WHITE PAINTED HARDWOOD 6-OVER-6 TRADITIONALLY DETAILED CLEAR SINGLE GLAZED SLIDING SASH WINDOW (BOTTOM PANE & TOP PANE OPENABLE WITH INTERNAL ADJUSTABLE LOCKING BOLTS) WITH PUTTY FILLETS AND LAMBS TONGUE STRUCTURAL GLAZING BARS, NO HORNS, WITH EXTERNAL WINDOW REVEAL TO BE WHITE PAINTED RENDERED
- 09 WHITE PAINTED HARDWOOD 6-OVER-6 TRADITIONALLY DETAILED CLEAR SINGLE GLAZED SLIDING SASH WINDOW (BOTTOM PANE & TOP PANE OPENABLE WITH INTERNAL ADJUSTABLE LOCKING BOLTS) WITH PUTTY FILLETS AND LAMBS TONGUE STRUCTURAL GLAZING BARS, NO HORNS
- 10 DECORATIVE EXTERNAL WINDOW ARCHITRAVE / MOULDING TO BE REINSTATED TO MATCH THE EXISTING ADJACENT
- 11 REINSTATE WHITE PAINTED RENDERED CONCRETE BALCONY AND 'INVISIBLE GREEN' PAINTED DECORATIVE MILD STEEL RAILINGS TO MATCH THE EXISTING ADJACENT (NON-ACCESSIBLE)
- 12 WHITE PAINTED HARDWOOD 15-OVER-10 ARCHED TRADITIONALLY DETAILED CLEAR SINGLE GLAZED SLIDING SASH WINDOW (BOTTOM PANE & TOP PANE OPENABLE WITH INTERNAL ADJUSTABLE LOCKING BOLTS) WITH PUTTY FILLETS AND LAMBS TONGUE STRUCTURAL GLAZING BARS, NO HORNS
- 13 DECORATIVE EXTERNAL WINDOW ARCHITRAVE / MOULDING TO BE REINSTATED TO MATCH THE EXISTING ADJACENT
- 14 REINSTATE CONCRETE STAIRCASE FROM STREET DOWN TO FRONT LIGHTWELL, WITH PATTERNED PORTLAND STONE TREADS AND RISERS AND WHITE PAINTED RENDERED WAIST AND SOFFIT, WITH 'INVISIBLE GREEN' PAINTED MILD STEEL HANDRAIL AND BALUSTADING
- 15 PATTERNED PORTLAND STONE TO FRONT LIGHTWELL FLOOR EXTERNALLY WITH INSPECTION CHAMBERS HAVING REMOVABLE PATTERNED PORTLAND STONE COVERS TO MATCH
- 16 WHITE PAINTED HARDWOOD FIXED / OPENABLE CLEAR SINGLE GLAZED CASEMENT WINDOWS WITH PUTTY FILLETS AND LAMBS TONGUE STRUCTURAL GLAZING BARS TO FRONT LIGHTWELL (LOWER GROUND FLOOR LEVEL)
- 17 PAINT WHITE EXISTING WHITE PAINTED RENDERED WALLS TO FRONT LIGHTWELL



08 PROPOSED SECTION 08 (15-12-08)
Scale 1:50 (@A1 SIZE)

KEY / DESCRIPTION OF FIT-OUT WORKS:

REAR WORKS:

- 20 PORTLAND STONE PAVING TO FLAT ROOF TERRACE AND REAR LIGHTWELL (WITH INSPECTION CHAMBERS HAVING REMOVABLE PORTLAND STONE COVERS TO MATCH)
- 21 EXTENSIVE TYPE (NO MAINTENANCE REQUIRED) SEDUM ROOF
- 22 GRP WATERPROOFED FLAT ROOFING SYSTEM WITH BOX GUTTERS AND RNO TO HOPPER / RWP UNDER PORTLAND STONE AND SEDUM ROOF FINISHES
- 23 GREY STONE COPING STONES TO FLAT ROOF PARAPET WALLS
- 24 LONDON OLD STOCK BRICK WORK TO MATCH EXISTING
- 25 WHITE PAINTED RENDER TO EXISTING BRICKWORK AND NEW INSULATED BLOCKWORK EXTERNAL WALLS
- 26 1100mm HIGH METAL RAILINGS AND HANDRAIL TO BE PAINTED 'INVISIBLE GREEN'
- 27 EXISTING METAL RAILINGS AND HANDRAIL TO BE PAINTED 'INVISIBLE GREEN'
- 28 WHITE PAINTED HARDWOOD 6-OVER-6 TRADITIONALLY DETAILED CLEAR SINGLE GLAZED SLIDING SASH WINDOWS (BOTTOM & TOP PANE OPENABLE WITH INTERNAL ADJUSTABLE LOCKING BOLTS), WITH PUTTY FILLETS AND LAMBS TONGUE STRUCTURAL GLAZING BARS, NO HORNS, WITH EXTERNAL WINDOW REVEAL TO BE WHITE PAINTED RENDERED
- 29 OMITTED
- 30 LIGHT GREY POLYESTER POWDER COATED ALUMINIUM FRAMED CLEAR DOUBLE GLAZED FIXED / OPENABLE CASEMENT WINDOWS WITH SLOPING EXTERNAL BEADING AND BLACK SPACER BARS / SEALS
- 31 WHITE PAINTED HARDWOOD TRADITIONALLY DETAILED PART SINGLE GLAZED / PART SOLID PANELED FRENCH DOORS
- 32 LIGHT GREY POLYESTER POWDER COATED ALUMINIUM FRAMED CLEAR DOUBLE GLAZED FRENCH EXTERNAL DOORS WITH SLOPING EXTERNAL BEADING AND BLACK SPACER BARS / SEALS
- 33 LIGHT GREY POLYESTER POWDER COATED ALUMINIUM FRAMED FIXED CLEAR DOUBLE GLAZED ROOFLIGHT
- 34 LIGHT GREY POLYESTER POWDER COATED ALUMINIUM FRAMED CLEAR DOUBLE GLAZED CANTILEVERED WALKWAY (GLAZED WALLS & ROOF) WITH SOLID TIMBER / RENDERED FLOOR STRUCTURE
- 35 BLACK PAINTED (WHEN AGAINST BRICKWORK) AND WHITE PAINTED (WHEN AGAINST WHITE PAINTED RENDER) TIMESAVER ALUMINIUM TRADITIONAL STYLE HOPPER / RWP / SVP / VENTED STACKS
- 36 WHITE PAINTED HARDWOOD 3-OVER-3 TRADITIONALLY DETAILED CLEAR SINGLE GLAZED SLIDING SASH WINDOWS (BOTTOM & TOP PANE OPENABLE WITH INTERNAL ADJUSTABLE LOCKING BOLTS) WITH PUTTY FILLETS AND LAMBS TONGUE STRUCTURAL GLAZING BARS, NO HORNS, WITH EXTERNAL WINDOW REVEAL TO BE WHITE PAINTED RENDER

B	26.05.16	ISSUE FOR PLANNING & LISTED BUILDING CONSENT
A	11.03.16	ISSUE FOR PLANNING & LISTED BUILDING CONSENT
	31.10.15	ISSUE FOR PLANNING & LISTED BUILDING CONSENT
rev	date	reason



Unit 6: Masons Yard
177 Westbourne Street t: +44 (0) 1273 201 830
Hove e: steve@searyarchitects.co.uk
East Sussex BN3 5FB w: www.searyarchitects.co.uk

project:	Montana Hotel: 16-18 Argyle Square, Kings Cross, London, WC1H 8AS		
client:	The St. Pancras Hotel Group		
dwg title:	Proposed Section 08		
dwg no:	15-12-08	rev:	B
scale:	1:50 (@A1 SIZE)	date:	31.10.15
project no:	1814	status:	PLANNING & LBC