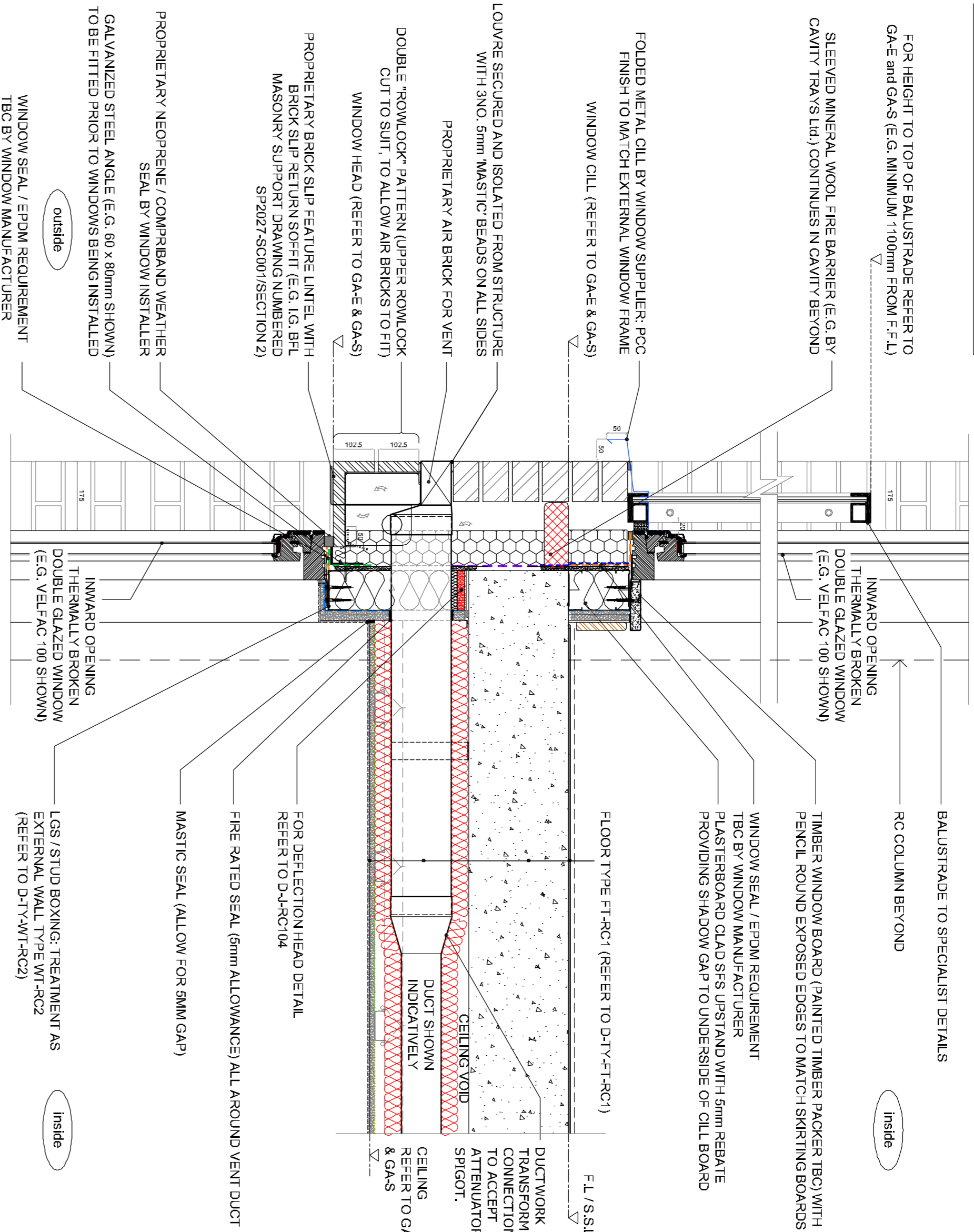
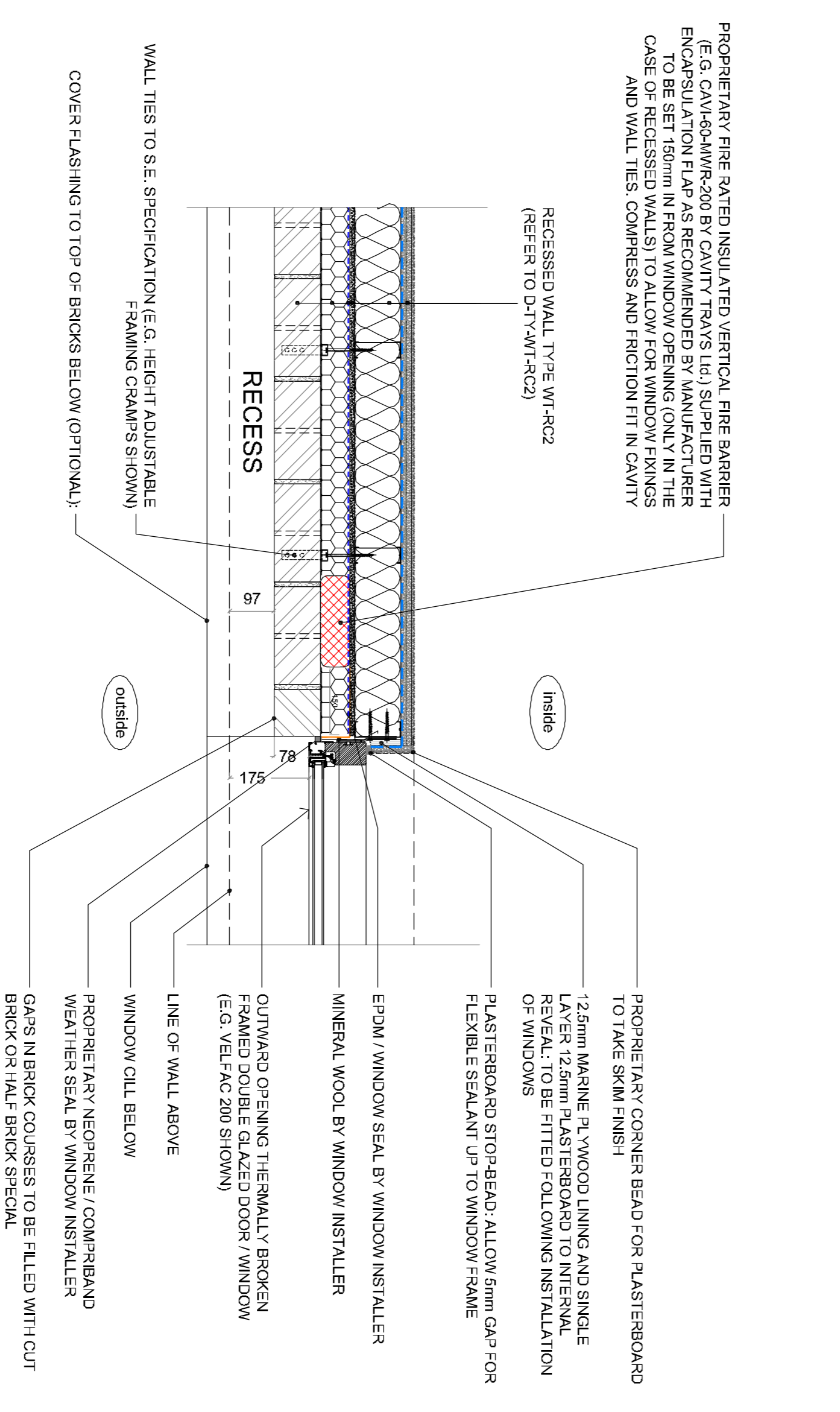


RE: ACCREDITED DETAIL: MCHWD02 & MCHWD04

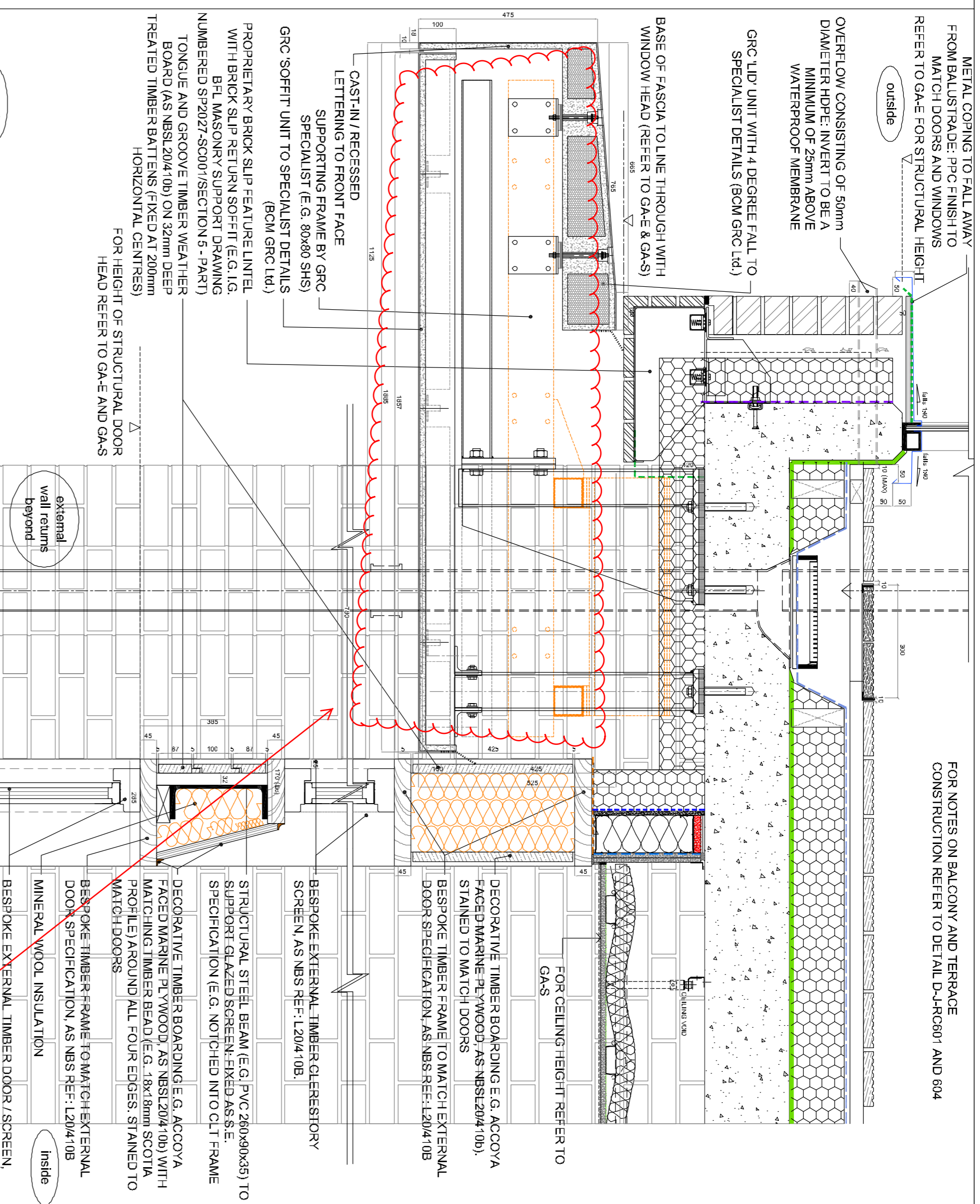


DETAIL - Block C - D-J-RC309 - Inward opening window head / Juliet balcony (L03 GL D/F-1-05)

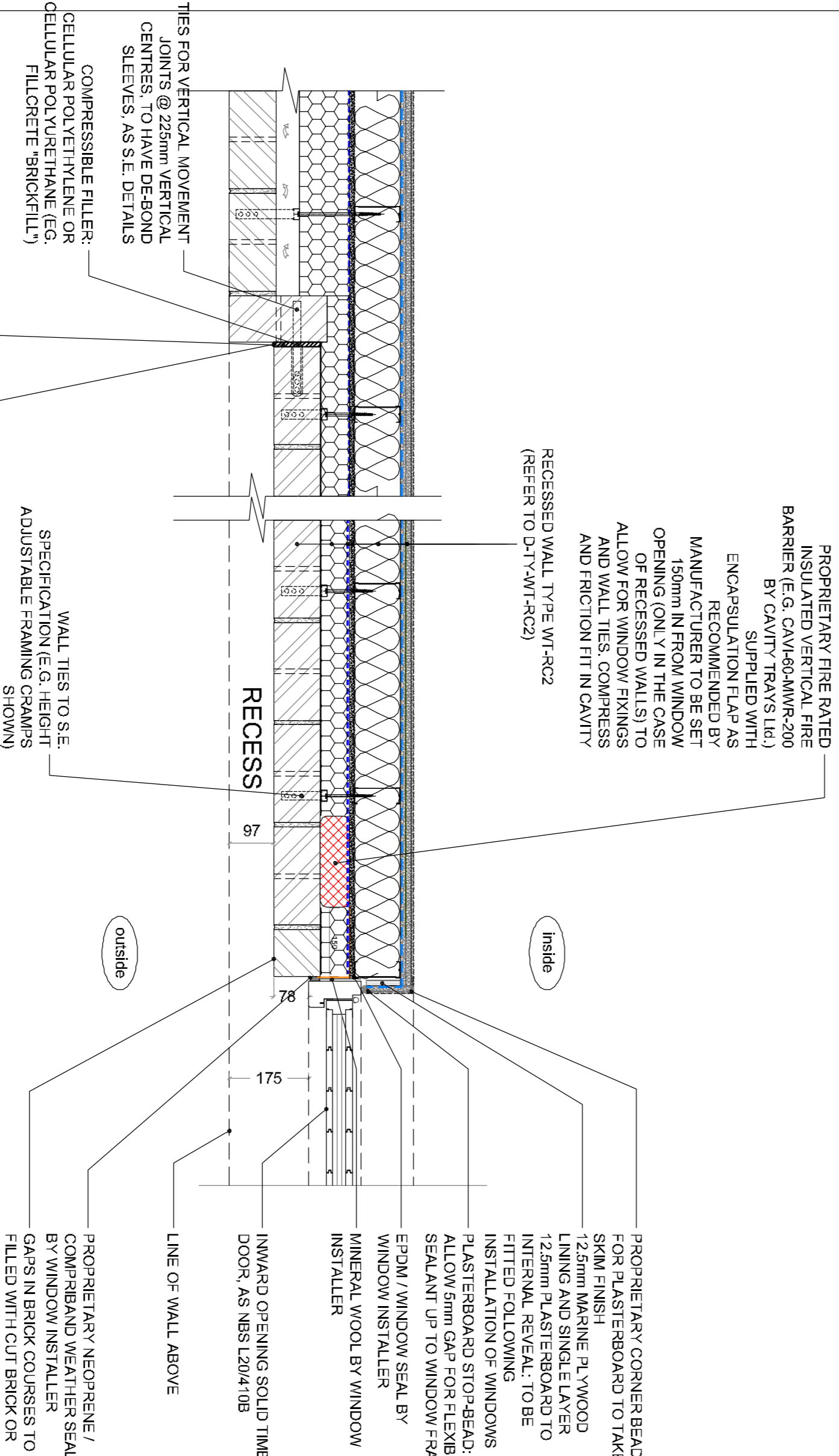


FOR NOTES ON INTERFACE WITH NON-RECESSED BRICKWORK REFER TO DETAIL D-J-RC312

DETAIL - Block C - D-J-RC311 - Recessed (outward opening) door / window jamb - PLAN



DETAIL - Block C - D-J-RC310 - Head of Communal entrance / Balcony (L01 GL J-06/07)



FOR NOTES ON BALCONY AND TERRACE CONSTRUCTION REFER TO DETAIL D-J-RC301 AND 604

DETAIL - Block C - D-J-RC312 - Recessed (inward opening) door jamb - PLAN

**Alan Camp Architects Ltd.** 28 Upper Street, London, SE1 1NW  
 Tel: 020 7593 1000, Fax: 020 7593 1001, [info@alancamp.com](mailto:info@alancamp.com)

**ALAN CAMP ARCHITECTS**

**COMPETITION DIRECTIONS**

Project: BACTON LOW RISE  
 Location: LONDON NW5  
 Type: BLOCK C DETAILS  
 Window & Door Junctions - RC309

Scale: 1:10 @ A1  
 1:20 @ A3  
 Drawing no.: D-J-RC309  
 Rev. as below to D-J-RC312

Issue: 01-16  
 Job no.: 1952

rev.	date	description	issued by	checked by
C1	20.01.16	First Construction Issue	RR	RR
C2	22.04.16	Detail D-J-RC310 updated to reflect canopy profile in line with BCA draft proposal L2-CC-2305-17P1, radon RC1 in detail 1104.16 and entrance doorway adjusted to suit	RR	RR

Received	Initial	Date
	RA	17 May 16

Client: RYDON

Status A - No Comments   
 Status B - Comments, Revise & Resubmit   
 Status C - Approved   
 For Information Only

Steel work to be co-ordinated with S E Proposals