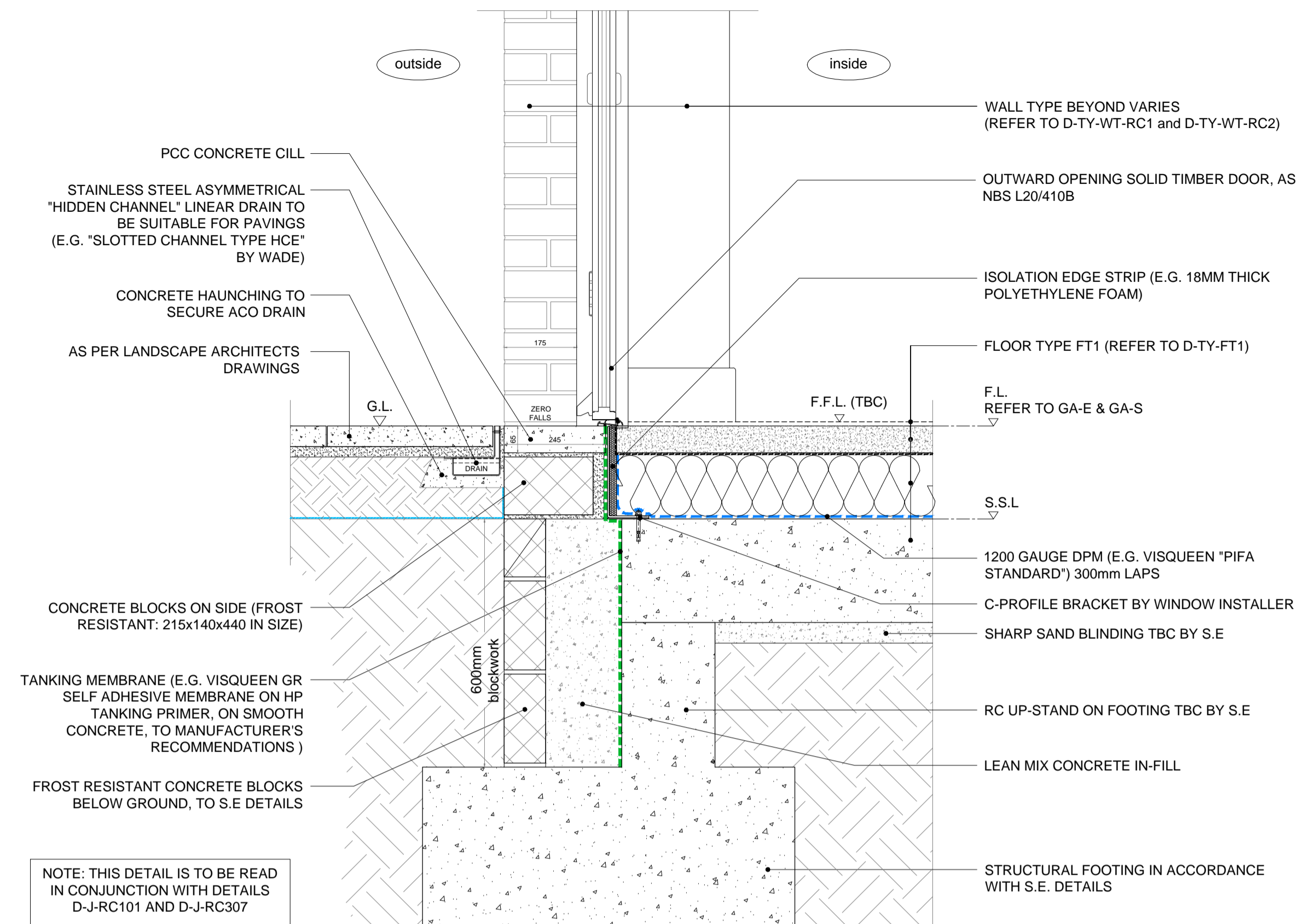
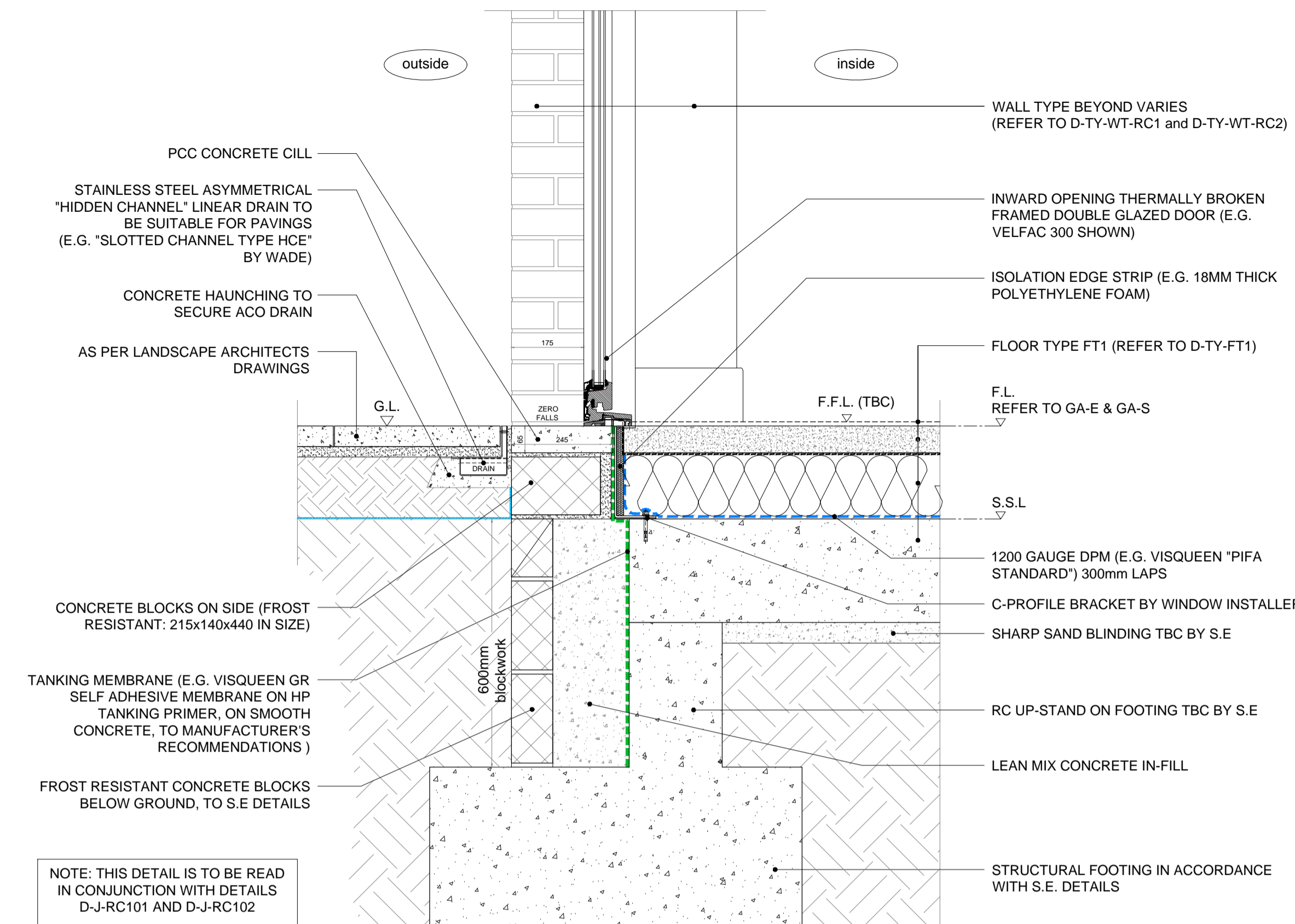


RE: ACCREDITED DETAIL: MCI-GF-03



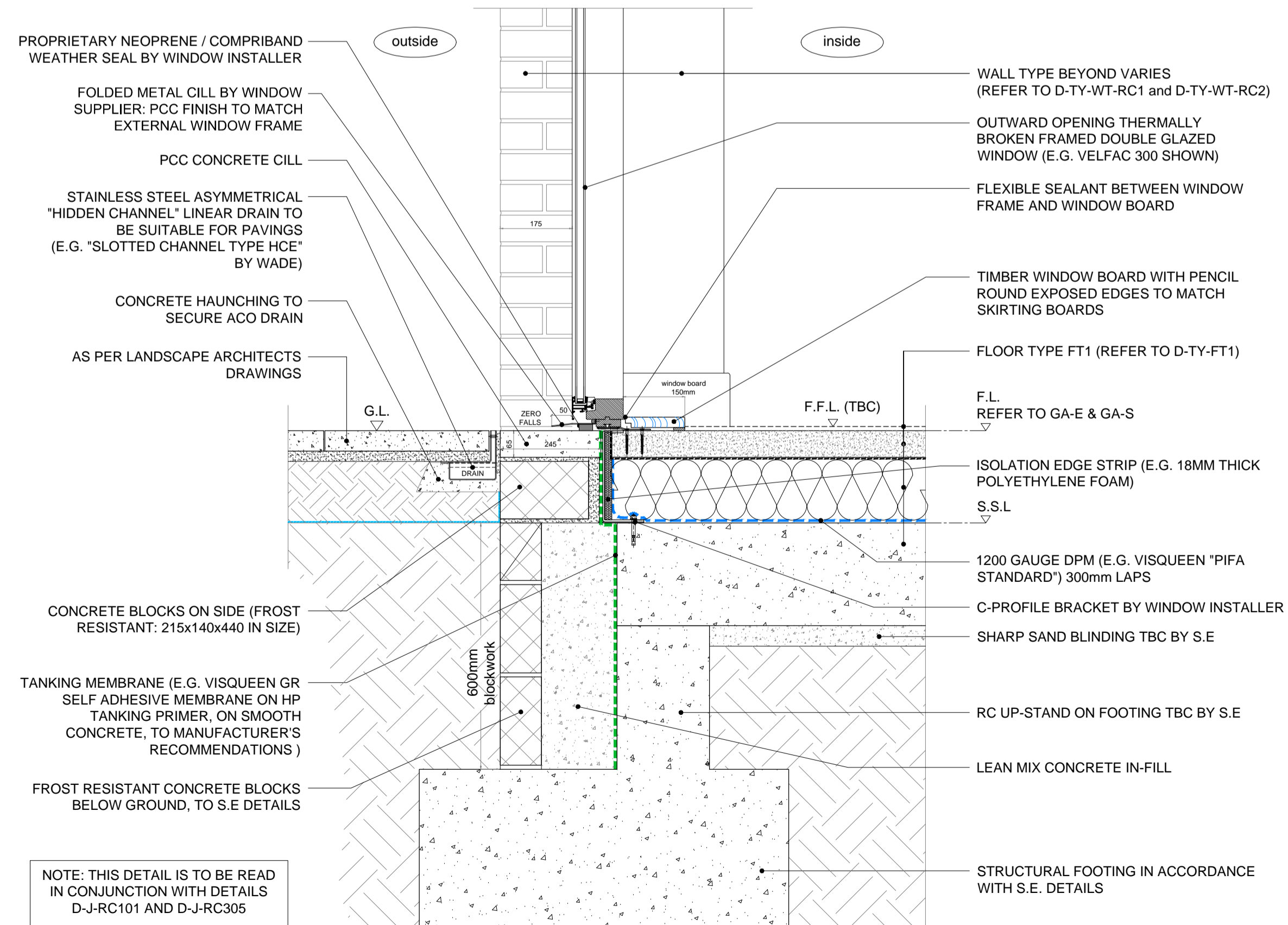
DETAIL - Block C - D-J-RC305 - Outward opening door threshold (L00 GL F1/G1-05)

RE: ACCREDITED DETAIL: MCI-GF-03



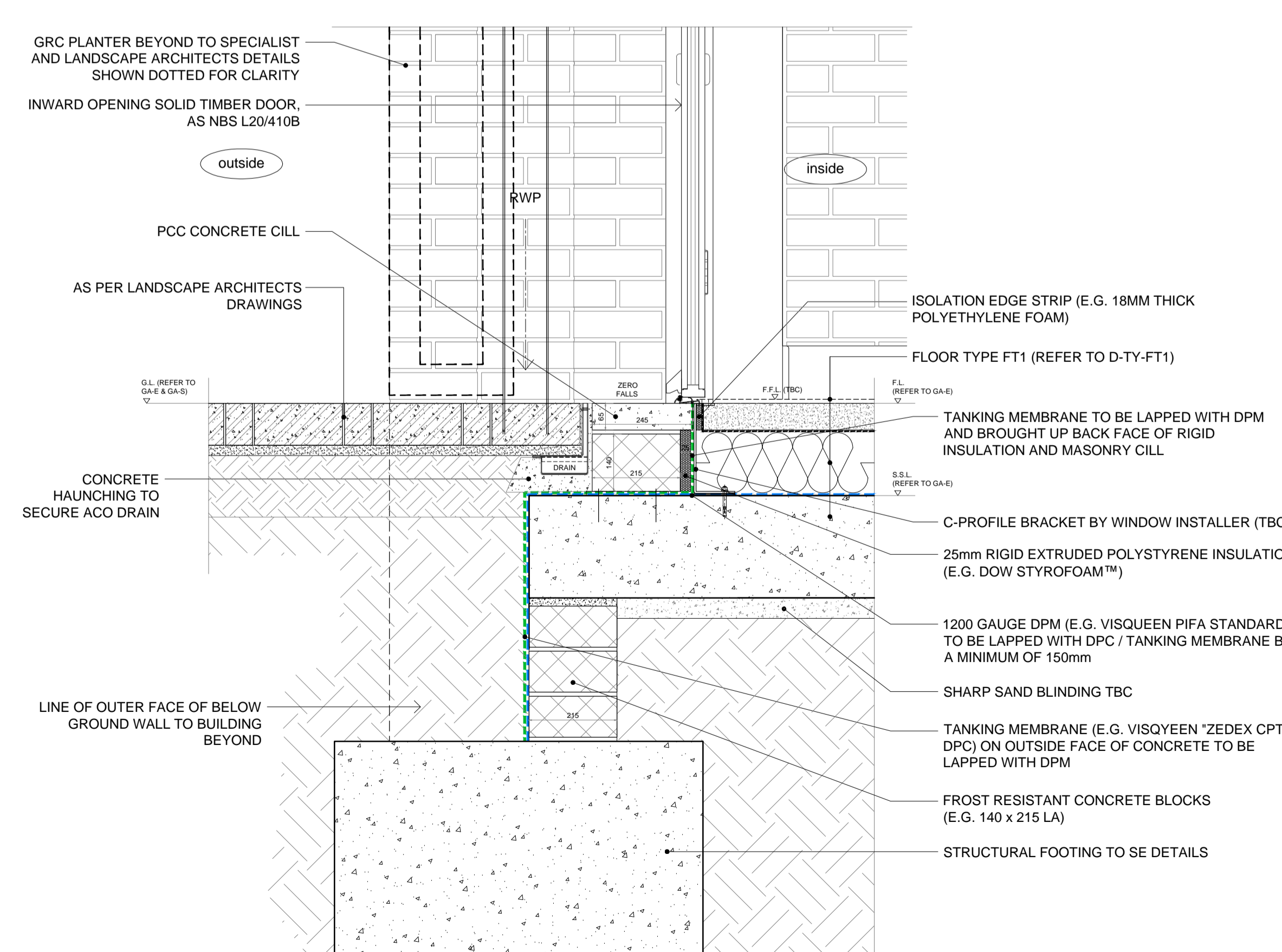
DETAIL - Block C - D-J-RC306 - Inward opening door threshold (L00 GL C-02/03)

RE: ACCREDITED DETAIL: MCI-GF-03



DETAIL - Block C - D-J-RC307 - Ground floor window - Wall type WT-RC1 (L00 GL F1-06/07)

RE: ACCREDITED DETAIL: MCI-GF-03



DETAIL - Block C - D-J-RC308 - Communal entrance threshold - Inward opening door (L00 GL J-06/07)

job	BACTON LOW RISE LONDON NW5	drawn	01.16
drawing	TYPICAL BLOCK C DETAILS Window & Door junctions - RC305-308	scale	1:10 @ A1 1:20 @ A3
job no.	1952	drawing no.	D-J-RC305 to D-J-RC308
rev.	as below	rev.	as below

rev.	date	description	issued by	checked by
C1	20.01.16	First Construction issue	RR	DWW
C2	15.04.16	Updated as per RCL mark-up	DB	RR
		23.02.16		

Received		
	Initial	Date
RYDON	RA	17 May 16
Client		
Status A - No Comments		<input checked="" type="checkbox"/>
Status B - Comments, Revise & Resubmit		<input type="checkbox"/>
Status C - Rejected		<input type="checkbox"/>
For Information Only		<input type="checkbox"/>