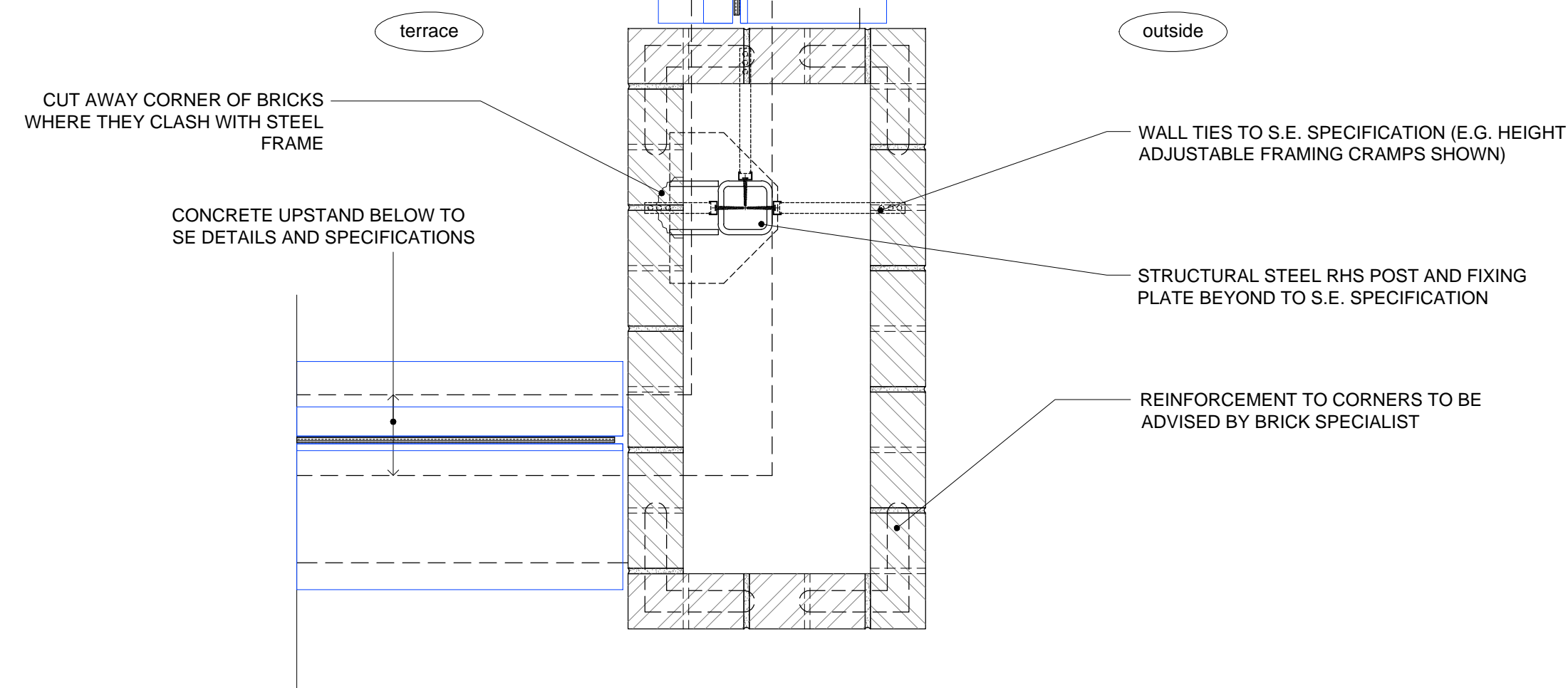


job	BACTON LOW RISE LONDON NWS	drawn:	01.16
drawing	TYPICAL BLOCK C DETAILS External wall junctions - RC121 to RC124	scale:	1:10 @ A1 1:20 @ A3
rev.	D-J-RC121 to D-J-RC124	job no:	1952
rev.	as below		

rev.	date	description	issued by	checked by
C1	20.01.16	First Construction issue	RR	DWW

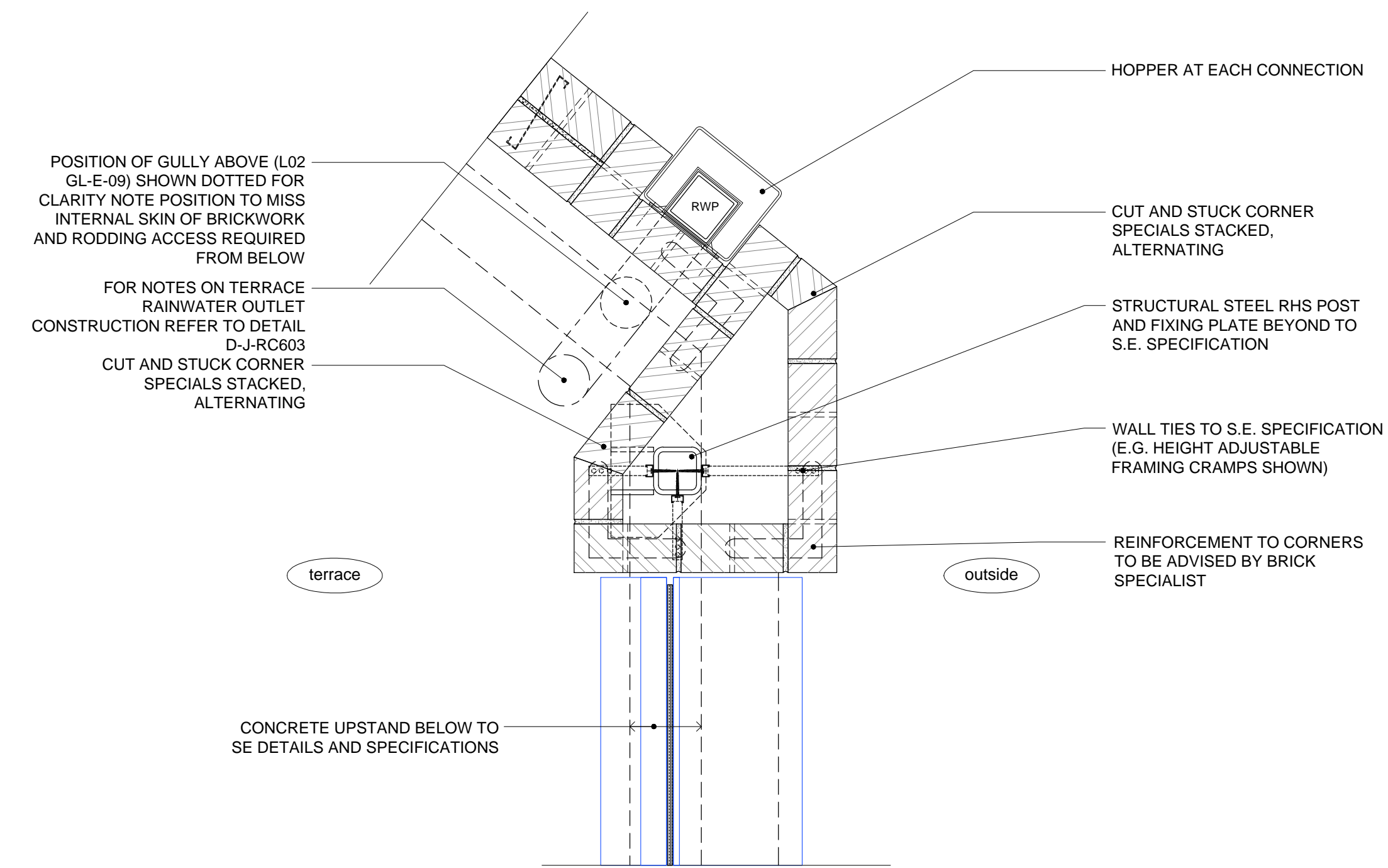
<i>Rydon</i>		
Received	Initial	Date
RYDON	RA	25 Jan 16
Client		
Status A - No Comments		<input checked="" type="checkbox"/>
Status B - Comments, Revise & Resubmit		<input type="checkbox"/>
Status C - Rejected		<input type="checkbox"/>
For Information Only		<input type="checkbox"/>

FOR NOTES ON TERRACE AND SOFFIT  
CONSTRUCTION REFER TO DETAIL D-J-RC604



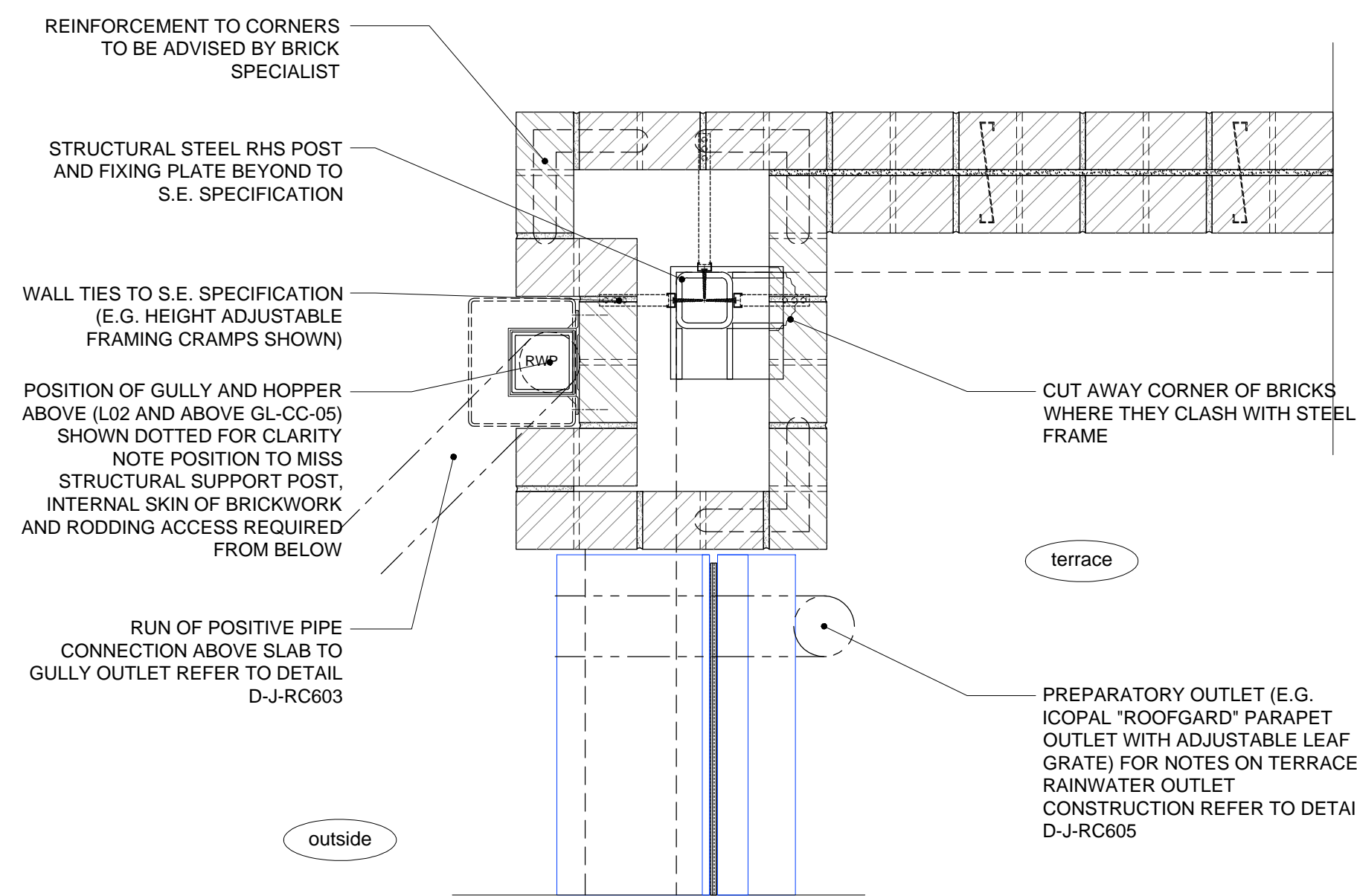
DETAIL - Block C - D-J-RC121 - Structural Post Encapsulation WT-RC1 (L01 GL J-09)

FOR NOTES ON BALCONY AND SOFFIT ABOVE  
CONSTRUCTION REFER TO DETAIL D-J-RC601



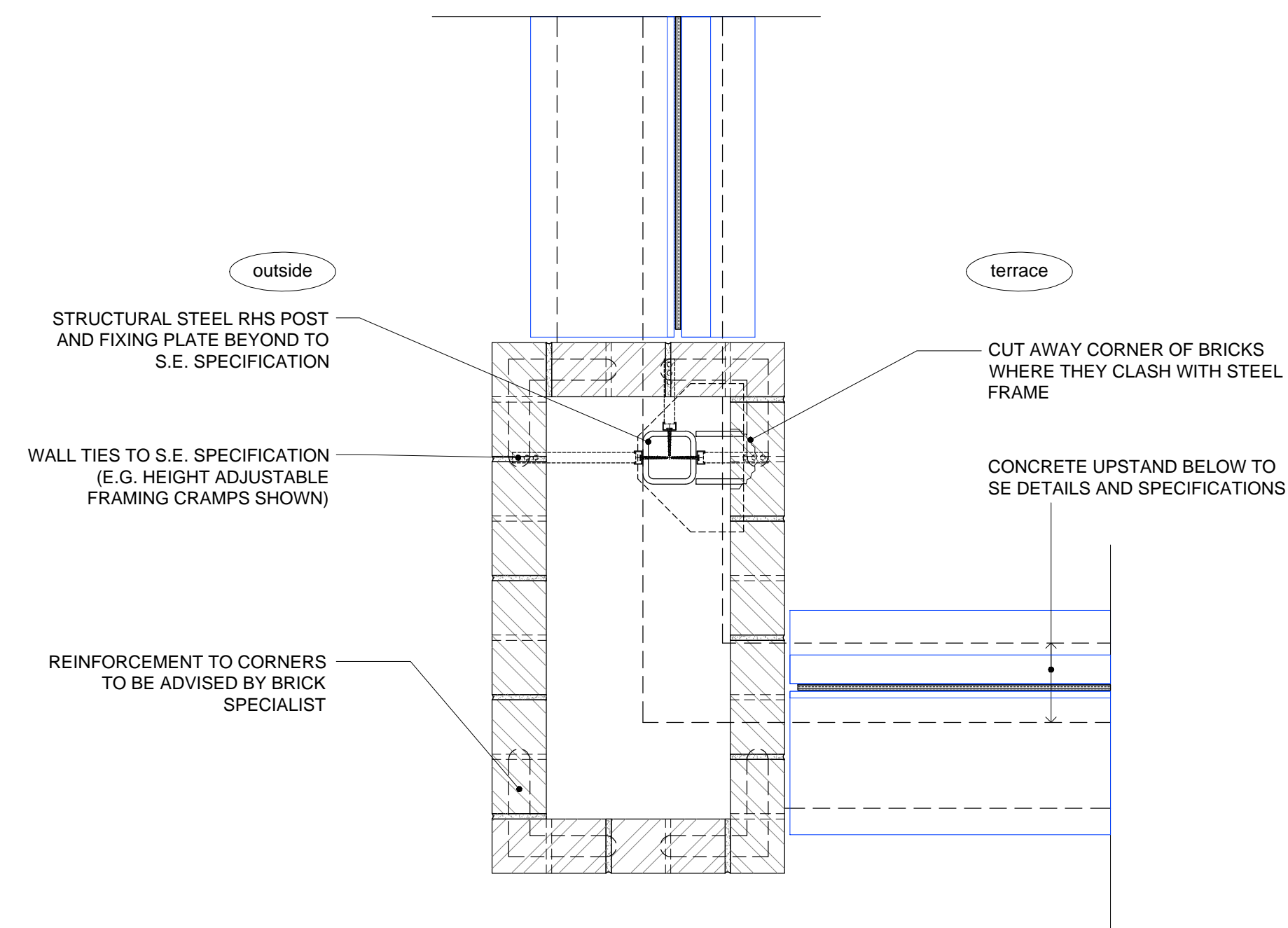
DETAIL - Block C - D-J-RC122 - Structural Post Encapsulation WT-RC1 (L01 GL E-09)

FOR NOTES ON BALCONY AND SOFFIT ABOVE  
CONSTRUCTION REFER TO DETAIL D-J-RC601



DETAIL - Block C - D-J-RC123 - Structural Post Encapsulation WT-RC1 (L01 GL CC-05)

FOR NOTES ON BALCONY AND SOFFIT  
CONSTRUCTION REFER TO DETAIL D-J-RC601



DETAIL - Block C - D-J-RC124 - Structural Post Encapsulation WT-RC1 (L01 GL J-05)